



# Office Building for Sale or Lease

**2040 BRICE ROAD  
REYNOLDSBURG, OHIO**

---

## Building Size

21,266 SF

## Lease Rate

\$12.50 FSG

## Available for Lease

Suite 100: **1,600 SF**

Suite 120: **2,200 SF**

---

## Property Highlights

- Well located office space with quick access to I-70
- 10 minutes to Downtown Columbus
- Surrounded by amenities
- First floor office space available for lease
- Ample surface parking
- Signage available
- Sale price not disclosed

---

*For information, please contact:*

### Derek Lichtfuss

*Director*

t 614-883-1239

derek.lichtfuss@nrmk.com

### Terry Coyne, SIOR, CCIM

*Vice Chairman*

t 216-218-0259

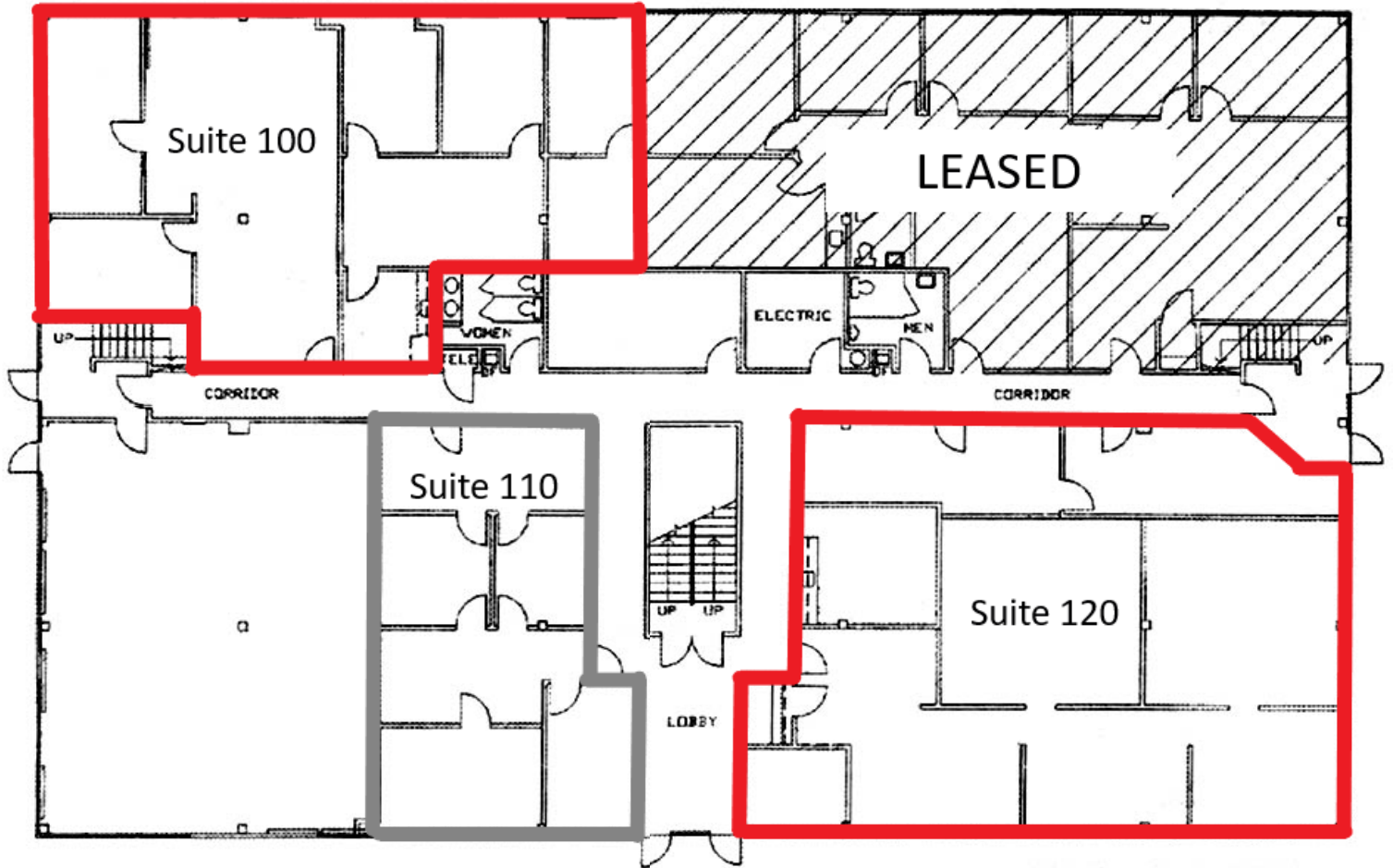
terry.coyne@nrmk.com

150 E Broad Street, Suite 500,  
Columbus, OH 43215

[nrmk.com](http://nrmk.com)

# NEWMARK

The information contained herein has been obtained from sources deemed reliable but has not been verified and no guarantee, warranty or representation, either express or implied, is made with respect to such information. Terms of sale or lease and availability are subject to change or withdrawal without notice.



CONTACT

**Derek Lichtfuss**  
*Director*  
t 614-883-1239  
derek.lichtfuss@nmrk.com

**Terry Coyne, SIOR, CCIM**  
*Vice Chairman*  
t 216-218-0259  
terry.coyne@nmrk.com

Interior Photos



CONTACT

**Derek Lichtfuss**

*Director*

t 614-883-1239

derek.lichtfuss@nmrk.com

**Terry Coyne, SIOR, CCIM**

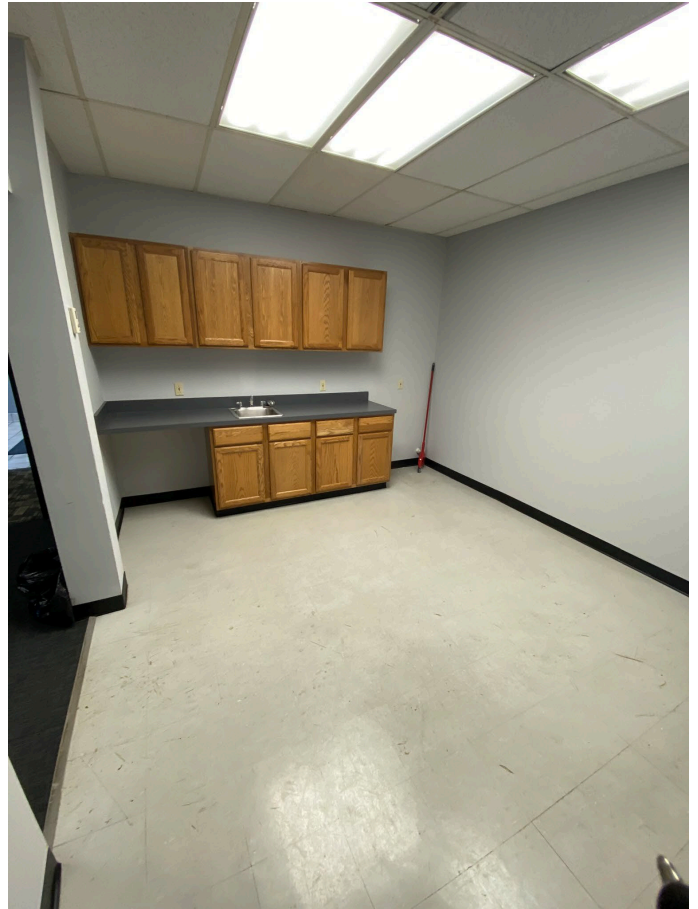
*Vice Chairman*

t 216-218-0259

terry.coyne@nmrk.com

**NEWMARK**

Interior Photos



CONTACT

**Derek Lichtfuss**  
*Director*  
t 614-883-1239  
derek.lichtfuss@nmrk.com

**Terry Coyne, SIOR, CCIM**  
*Vice Chairman*  
t 216-218-0259  
terry.coyne@nmrk.com

**NEWMARK**

Interior Photos



CONTACT

**Derek Lichtfuss**  
*Director*  
t 614-883-1239  
derek.lichtfuss@nmrk.com

**Terry Coyne, SIOR, CCIM**  
*Vice Chairman*  
t 216-218-0259  
terry.coyne@nmrk.com

**NEWMARK**