



FOR SALE OR LEASE

**5015 SOUTHPARK DR, STE. 230
DURHAM, NC 27713**

PHOENIXCOMMERCIALNC.COM
PRESENTS

OFFICE CONDO FOR SALE OR LEASE

5015 SOUTHPARK DR. STE 230
DURHAM, NC 27713

EXCLUSIVELY LISTED BY:

KIM MILLS

Principal

919-948-7232 (D)

919-418-8456 (C)

kim@phoenixcommercialnc.com



PHOENIX
COMMERCIAL PROPERTIES

PROPERTY HIGHLIGHTS

5015 SOUTHPARK DR. STE. 230, DURHAM, NC 27713

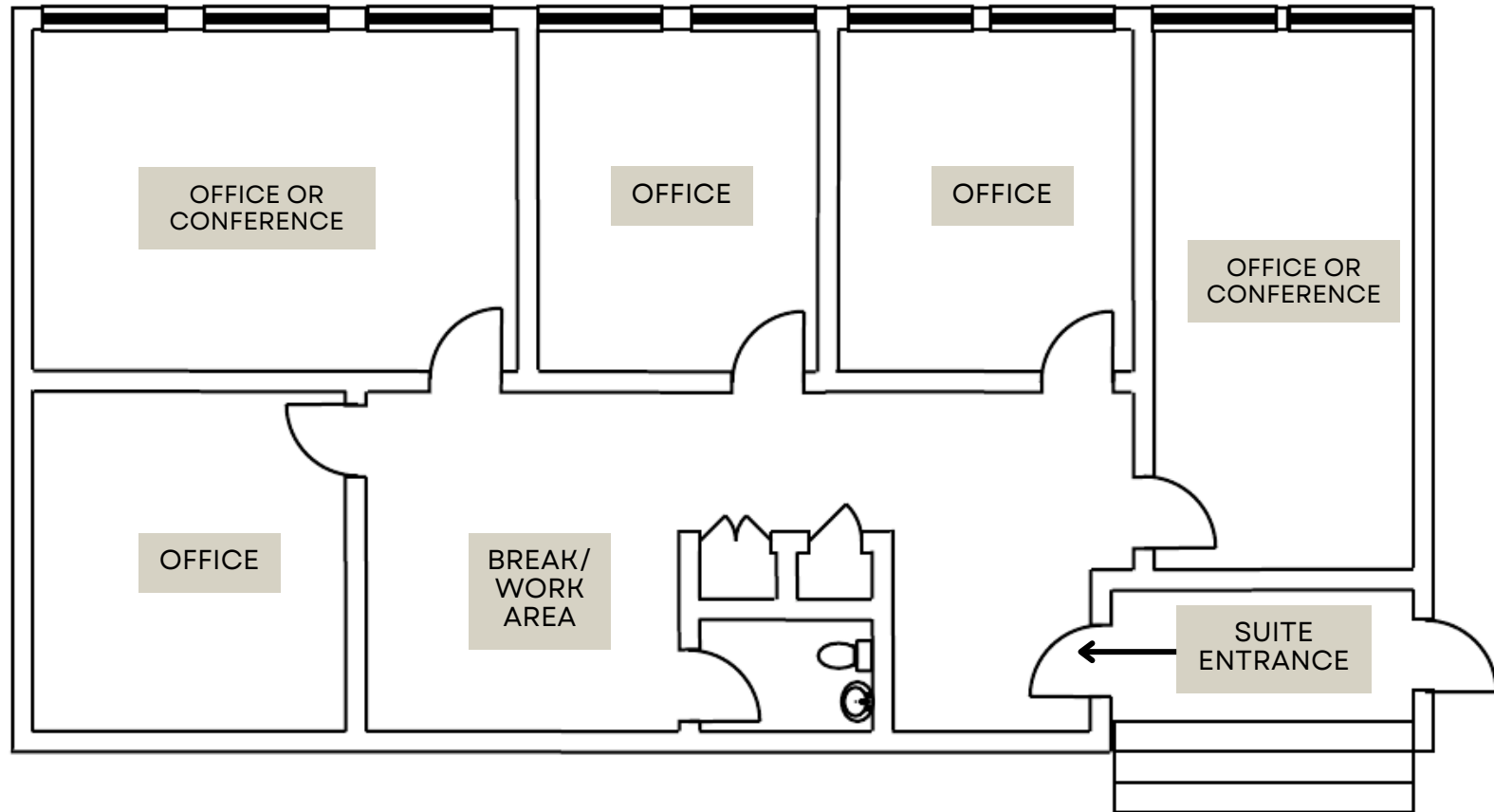
Explore the ideal setting for your thriving business at 5015 Southpark Drive, Suite 230, Durham, NC—a meticulously designed office condo tailor-made for small businesses. This inviting space offers approximately 1,373 RSF, featuring three glass-enclosed private offices, a cozy interior office, and a well-equipped conference room to foster collaboration and growth. Perfectly positioned near key transportation corridors (I-40 and Hwy 54/Fayetteville Rd), this location ensures you're just minutes from the bustling Streets of Southpoint area, a hub for retail, dining, and entertainment. With ample parking available, it offers convenience for both your team and clients, making it a prime spot to elevate your business in Durham's vibrant commercial scene.

TOTAL SQUARE FEET AVAILABLE	±1,373 RSF
PROPERTY LAYOUT	3 private offices on glass line 1 private interior office Conference Room Break/Work Area Restroom
PARKING	4 spaces/1,000 SF
LOCATION BENEFITS	Near I-40 and Hwy 54/Fayetteville Rd. Intersection. Minutes to the Streets at Southpoint, RDU Airport & only 2 miles west of Research Triangle Park
ZONING	OI (Office & Institutional)
LEASE RATE	\$18.00 PSF (MG)
SALE PRICE	\$361,100.00



FLOOR PLAN

5015 SOUTHPARK DR. STE. 230, DURHAM, NC 27713



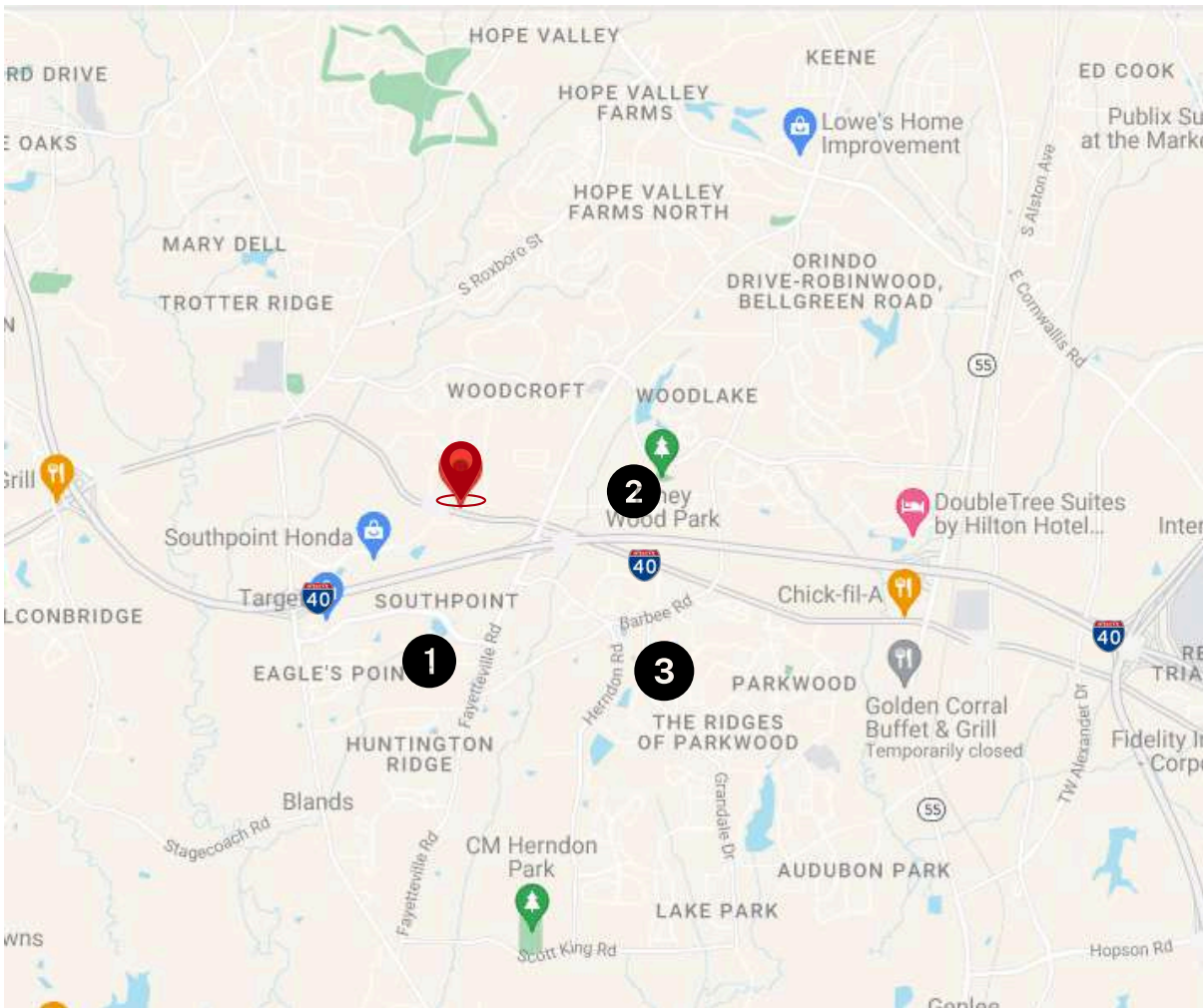
*FLOOR PLAN IS FOR ILLUSTRATIVE PURPOSES ONLY AND IS SUBJECT TO CHANGE

LOCATION

5015 SOUTHPARK DR. STE. 230, DURHAM, NC 27713

NEARBY AMENITIES & ACCESS

This office condo at 5015 Southpark Drive in Durham, NC, is well-connected, located near the I-40 and Hwy 54/Fayetteville Rd intersection. Just minutes from the Streets at Southpoint, RDU Airport, and only 2 miles west of Research Triangle Park, this location offers plentiful shopping and dining options, including fast food and upscale restaurants. Essential services such as banks and pharmacies are conveniently nearby, alongside various hotels, making it a practical choice for businesses valuing accessibility and comprehensive local amenities.



1 Streets at Southpoint

- FIREBIRDS
- THE CHEESECAKE FACTORY
- MAGGIANO'S
- CHICK-FIL-A
- PANERA BREAD

2

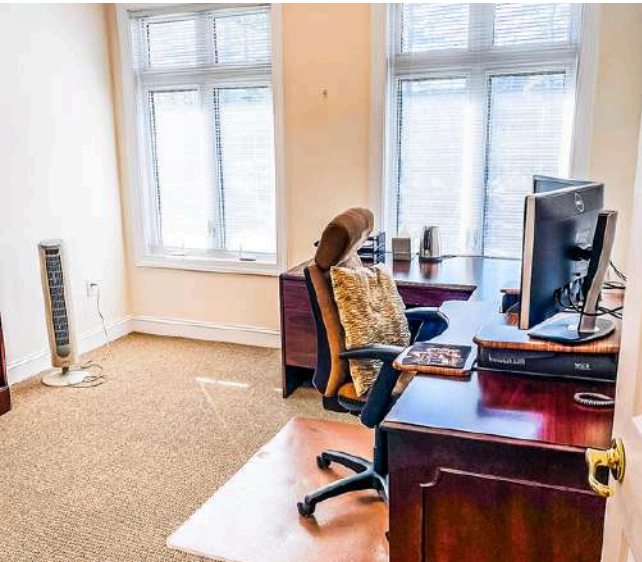
- CHASE BANK
- MCDONALDS
- CITY BBQ
- HARRIS TEETER
- WALGREENS
- UPS

3 Renaissance Center

- FIRST WATCH
- ULTA
- RUTHS CHRIS
- HILTON
- BUFFALO WILD WINGS
- PF CHANGS

PROPERTY PHOTOS

5015 SOUTHPARK DR. STE. 230, DURHAM, NC 27713





PHOENIXCOMMERCIALNC.COM
PRESENTS

OFFICE CONDO FOR SALE OR LEASE

5015 SOUTHPARK DR. STE 230
DURHAM, NC 27713

EXCLUSIVELY LISTED BY:

KIM MILLS

Principal

919-948-7232 (D)

919-418-8456 (C)

kim@phoenixcommercialnc.com



PHOENIX
COMMERCIAL PROPERTIES