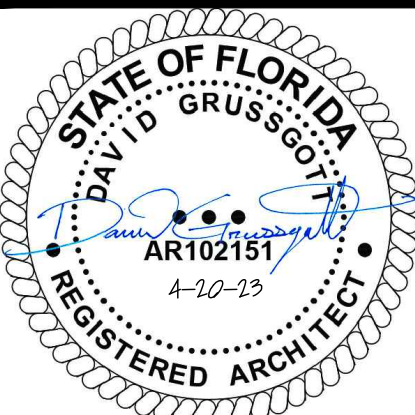


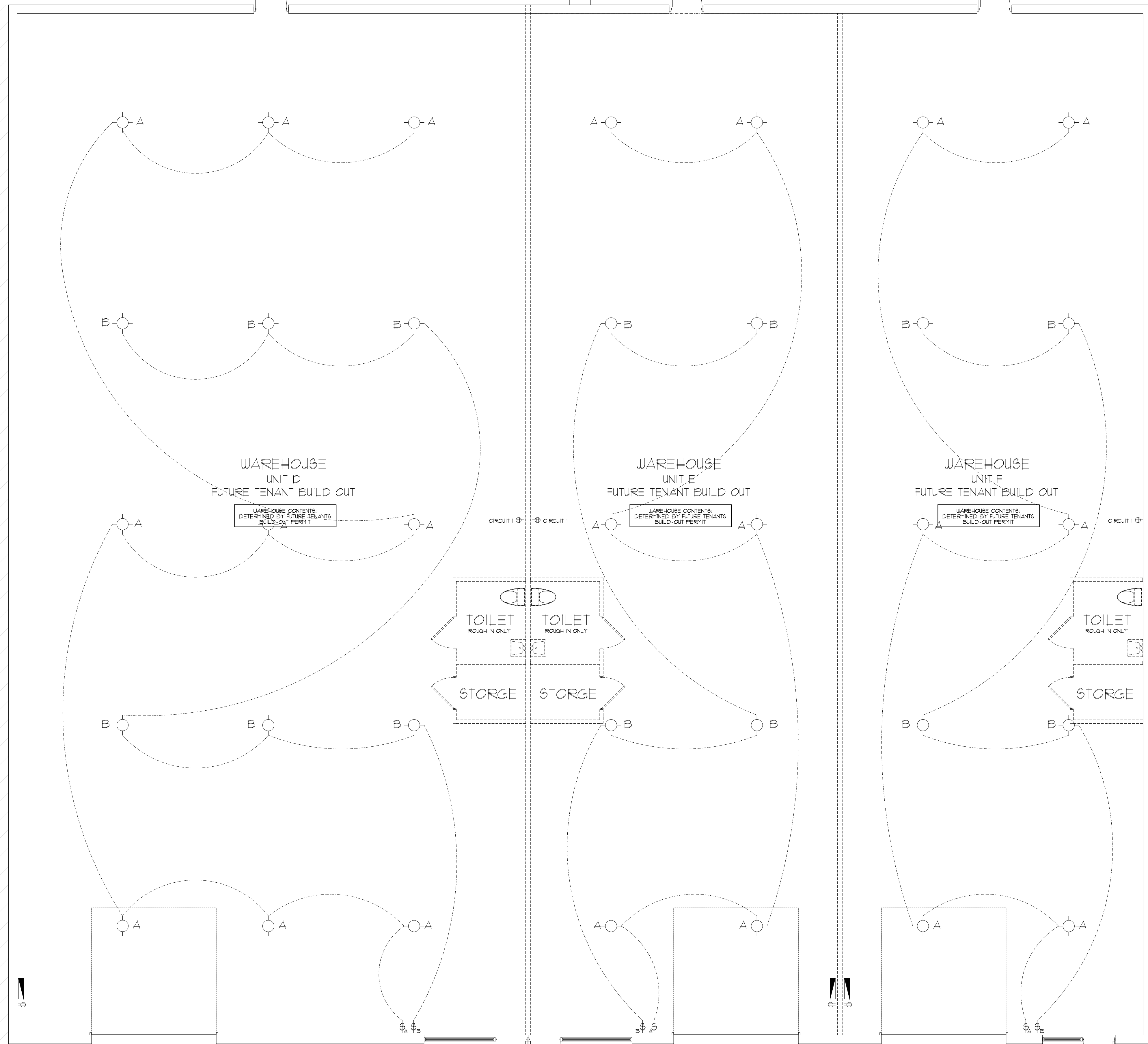
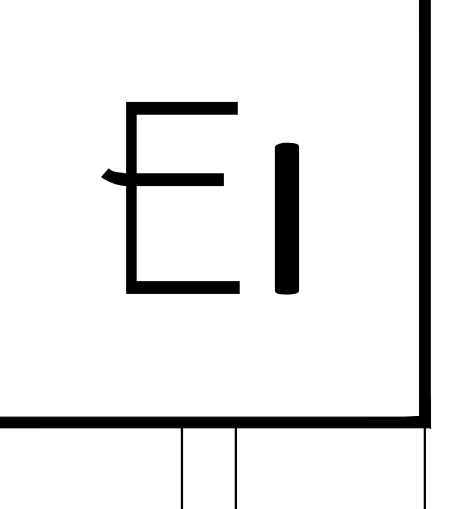
ATELIER
DESIGN GROUP
ARCHITECTS
P.O. BOX 353217
PALM COAST, FL 32135
DAVID@ATELIER-DESIGNGROUP.COM
386.503.5103
COPYRIGHT © 2023



DAVID GRUSSGOTT
ARCHITECT
AIA - NCARB
LIC. AR102151
P.O. BOX 353217
PALM COAST, FL 32164

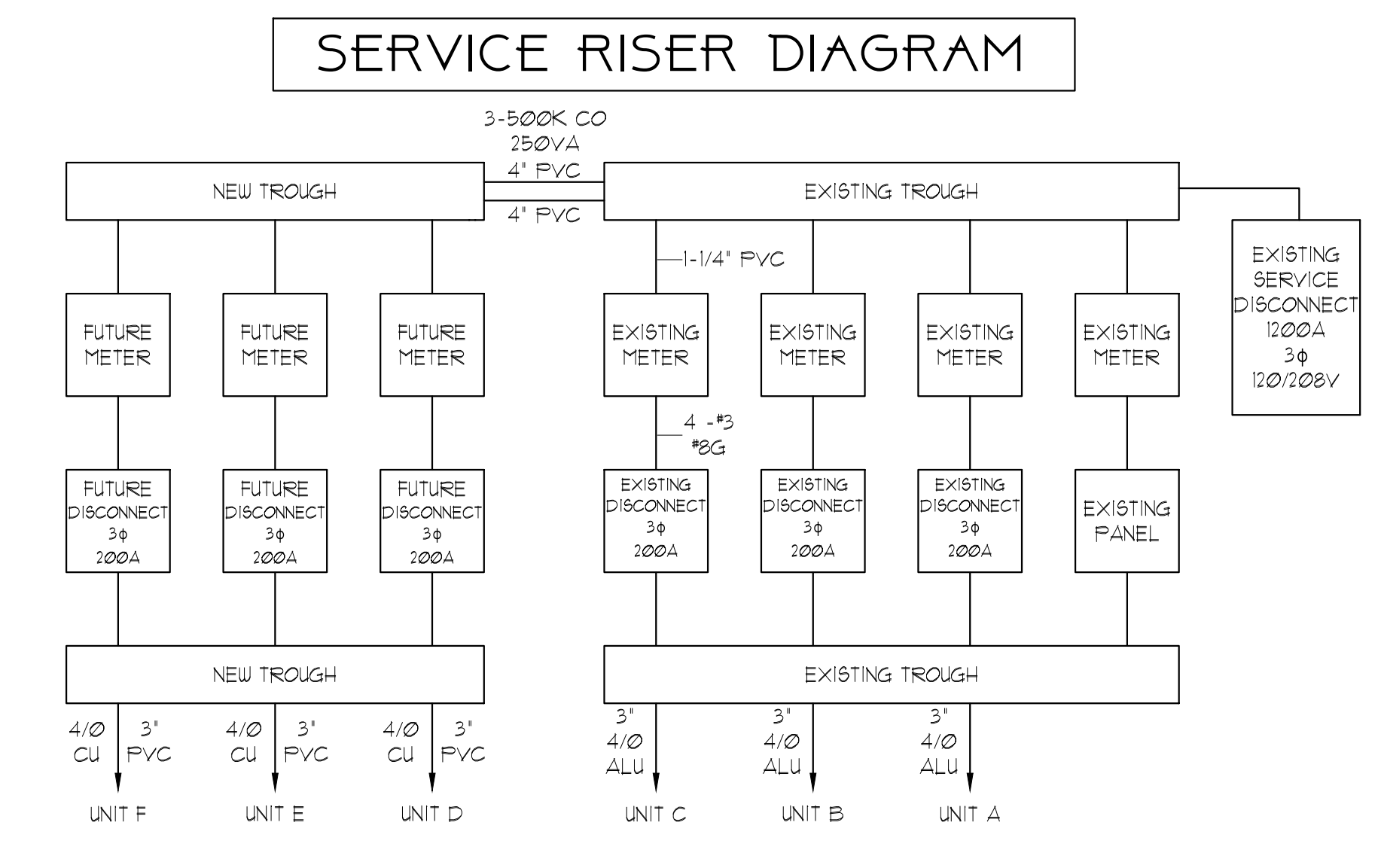
A METAL BUILDING FOR:
V3 LLC ADDITION
25 RAILSIDE WAY, PALM COAST, FL 32137
ELECTRICAL PLAN

DATE: 12.5.22	JOB NO: 202015	
REV #	DATE	ISSUE
	2.10.23	PERMIT SET
	2.23.23	PERMIT SET
	4.20.23	BUILD DEP



NOTE: ALL LIGHTING CONNECTED TO EXISTING HOUSE PANEL

ELECTRICAL PLAN
SCALE: 3/16" = 1'-0"



ELECTRICAL LEGEND
2017 NATIONAL ELECTRICAL CODE

○ OFFICE 15W LED LIGHTS	□ CABLE OUTLET	⚡ WEATHER PROOF (GFCI) DUPLEX RECEPTACLE	⊞ ELECTRICAL BOX
⊞ DUPLEX WALL OUTLET	▲ PHONE/DATA JACK	⊞ 220V RECEPTACLE	○ WAREHOUSE 150W LED UFO LIGHT FIXTURE
⊞ QUADRUPLEX WALL OUTLET (GFCI) DUPLEX GROUND FAULT CIRCUIT INTERRUPTER OUTLET	○ RECESSED LIGHT FIXTURE	⊞ LIGHT SWITCH	⊞ GARAGE DOOR RELEASE
	○ RECESSED ADJUSTABLE EYEBALL LIGHT FIXTURE	⊞ EXHAUST FAN	⊞ DISCONNECT
		⊞ LED WALL PACK LIGHT	⊞ GARAGE DOOR OPENER AND RECEPTACLE