

# KINGS POINT MEDICAL PROFESSIONAL BLDG

15127 JOG RD, DELRAY BEACH, FL 33446



## Office Building For Lease



### PROPERTY OVERVIEW

Under new ownership, 15127 Jog Road in Delray Beach, Florida offers a compelling opportunity for medical and professional users seeking well-located space with immediate availability. The property features competitive lease rates, 24-hour controlled access, and ample parking for both tenants and visitors. Suitable for both growing businesses and established organizations, the building provides a practical and functional environment designed to support a wide range of business operations. This prime Delray Beach location offers convenient access to surrounding retail, dining, medical services, and major roadways.

### PROPERTY HIGHLIGHTS

- Under new ownership with plans for modernization renovations
- Immediately available space
- Competitive lease rates
- 24 hour controlled access
- Ample parking for tenants and visitors

### OFFERING SUMMARY

Available SF:	1,522 - 5,394 SF
Lease Rate:	\$20.00 SF/yr (NNN)
2025 CAM (Estimate)	\$10.00/SF
Year Built/Renovated:	1980/2000
Building Size:	19,178 SF

### LOCATION OVERVIEW

Located in the heart of Delray Beach, FL, the area surrounding the property offers a vibrant blend of business and leisure. With easy access to downtown Delray, tenants will enjoy a dynamic work environment with unique dining options, boutique shops, and cultural attractions. Convenient access to major roadways for easy commuting, while also being in close proximity to Delray Medical Center and other essential amenities. This prime location provides the ideal backdrop for tenants to work, connect, and thrive in the heart of Delray's bustling community.



Noah Jensen    Ryan R. Dinsdale, CCIM  
240.361.8182    561.504.6169  
njensen@kdcre.com    rdinsdale@kdcre.com

# KINGS POINT MEDICAL PROFESSIONAL BLDG

15127 JOG RD, DELRAY BEACH, FL 33446



## Office Building For Lease



### LEASE INFORMATION

Lease Type:	NNN	Lease Term:	Negotiable
Total Space:	1,522 - 5,394 SF	Lease Rate:	\$20.00 SF/yr

### AVAILABLE SPACES

SUITE	SIZE (SF)	LEASE TYPE	LEASE RATE	DESCRIPTION
201	1,522 SF	NNN	\$20.00 SF/yr	Move-in ready medical office space. 4-6 exam rooms.
101	2,151 SF	NNN	\$20.00 SF/yr	Medical/Professional Space for lease. This unit comes with Three-Phase power.
106	5,394 SF	NNN	\$20.00 SF/yr	Ready to be built-out for a qualified tenant. Plumbing access for every room available.



**KD COMMERCIAL**  
REAL ESTATE

Noah Jensen     Ryan R. Dinsdale, CCIM  
240.361.8182     561.504.6169  
njensen@kdcre.com     rdinsdale@kdcre.com

# KINGS POINT MEDICAL PROFESSIONAL BLDG

15127 JOG RD, DELRAY BEACH, FL 33446



## Property Details

Lease Rate	\$20.00 SF/YR
------------	---------------

### LOCATION INFORMATION

Building Name	Kings Point Medical Professional Bldg
Street Address	15127 Jog Rd
City, State, Zip	Delray Beach, FL 33446
County	Palm Beach

### BUILDING INFORMATION

Building Size	19,178 SF
Building Class	B
Tenancy	Multiple
Number of Floors	2
Year Built	1980
Year Last Renovated	2000
Number of Buildings	1

### PROPERTY INFORMATION

Property Type	Office
Property Subtype	Office Building
Zoning	CG
Lot Size	3.69 Acres
APN #	00-42-46-22-14-000-0010

### PARKING & TRANSPORTATION

Parking Type	Surface
--------------	---------

### UTILITIES & AMENITIES

Handicap Access	Yes
Number of Elevators	1
Central HVAC	Yes
Restrooms	4



**KD COMMERCIAL**  
REAL ESTATE

Noah Jensen    Ryan R. Dinsdale, CCIM  
240.361.8182    561.504.6169  
njensen@kdcre.com    rdinsdale@kdcre.com

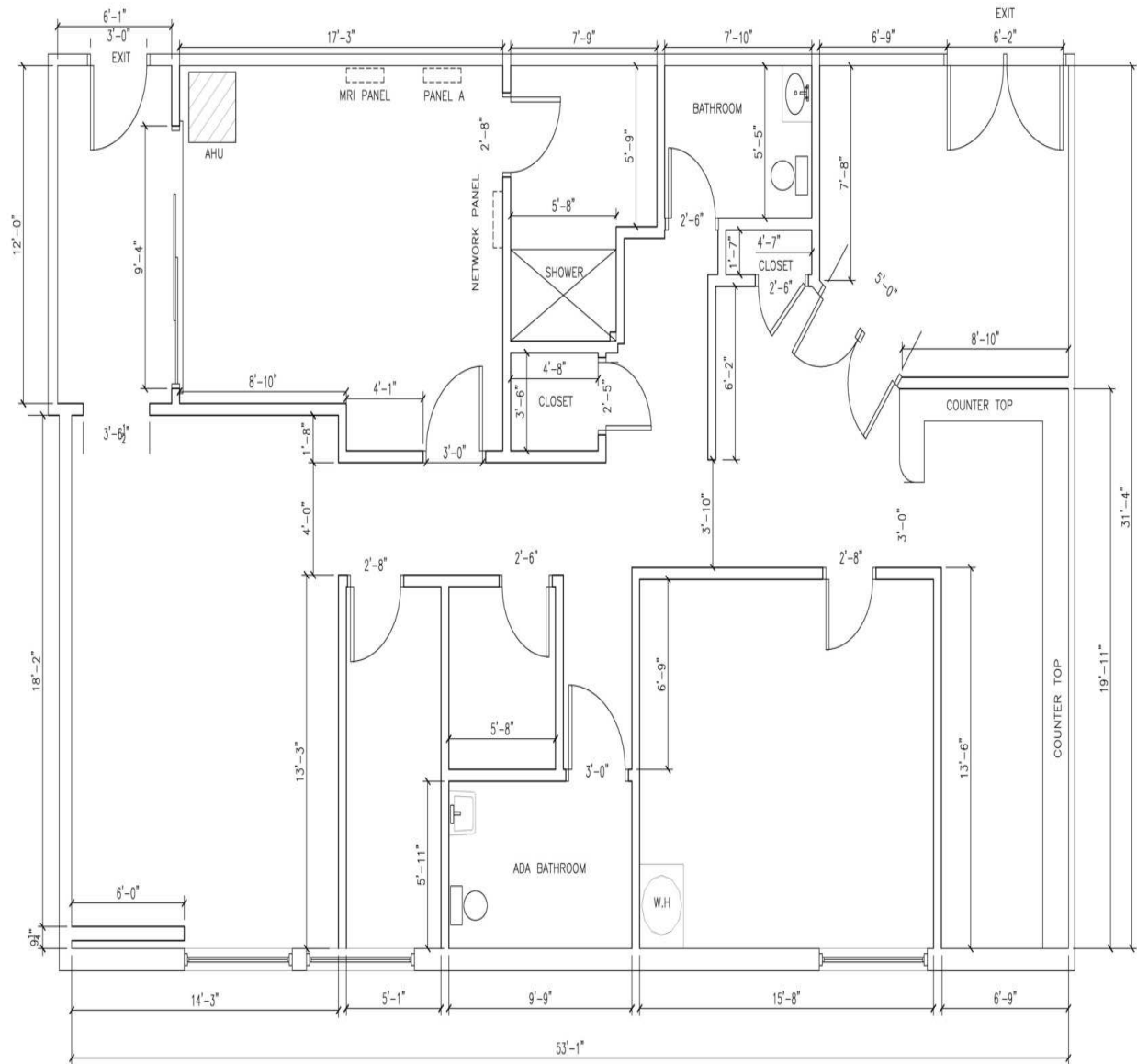


# KINGS POINT MEDICAL PROFESSIONAL BLDG

15127 JOG RD, DELRAY BEACH, FL 33446



## Floor Plan - Suite 101



KINGS POINT PLAZA PROFESIONAL BUILDING UNIT 101-103 EXISTING FLOOR LAYOUT



**KD COMMERCIAL**  
REAL ESTATE

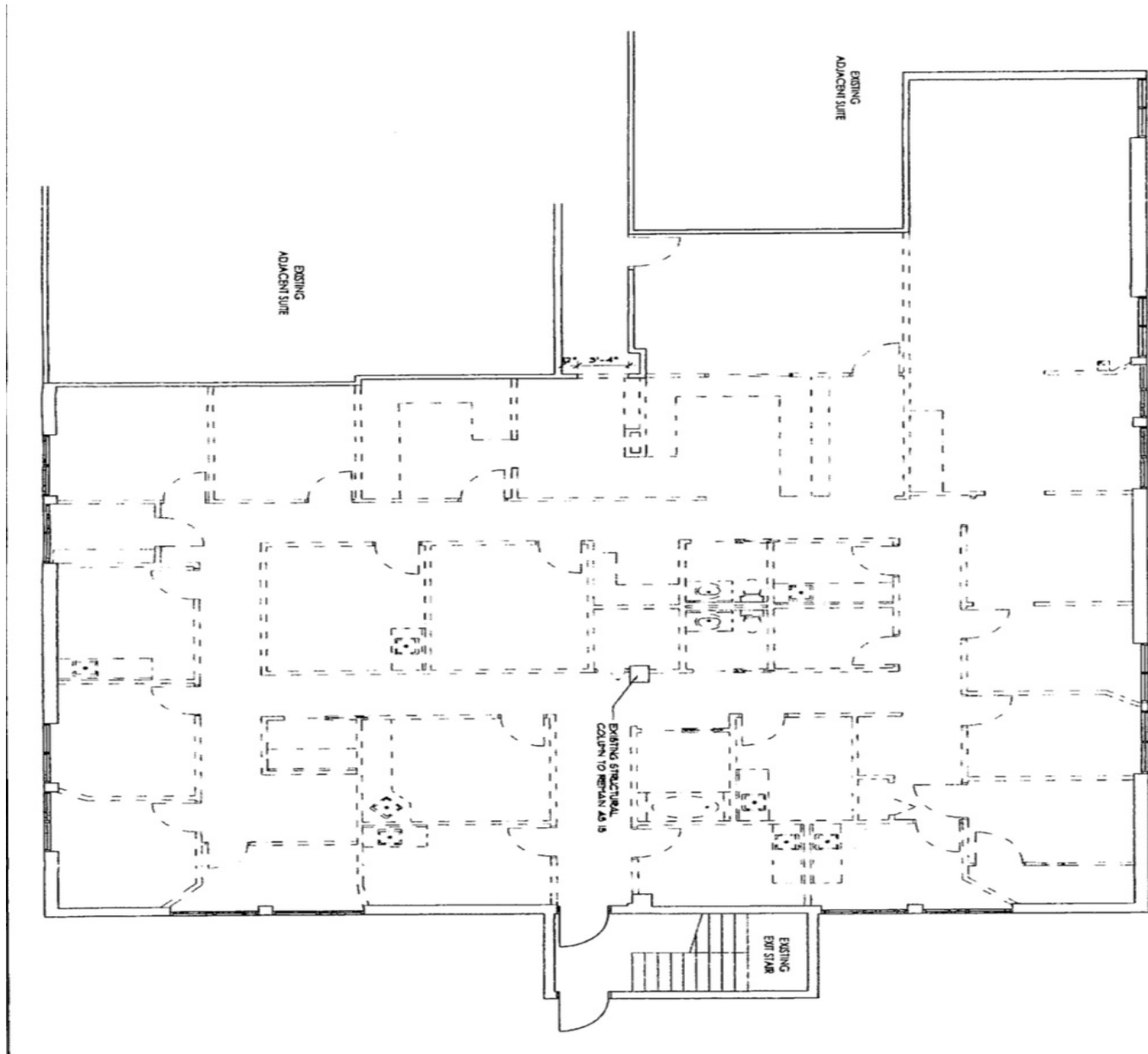
Noah Jensen Ryan R. Dinsdale, CCIM  
240.361.8182 561.504.6169  
njensen@kdcre.com rdinsdale@kdcre.com

# KINGS POINT MEDICAL PROFESSIONAL BLDG

15127 JOG RD, DELRAY BEACH, FL 33446



## Floor Plan - Suite 106



**KD COMMERCIAL**  
REAL ESTATE

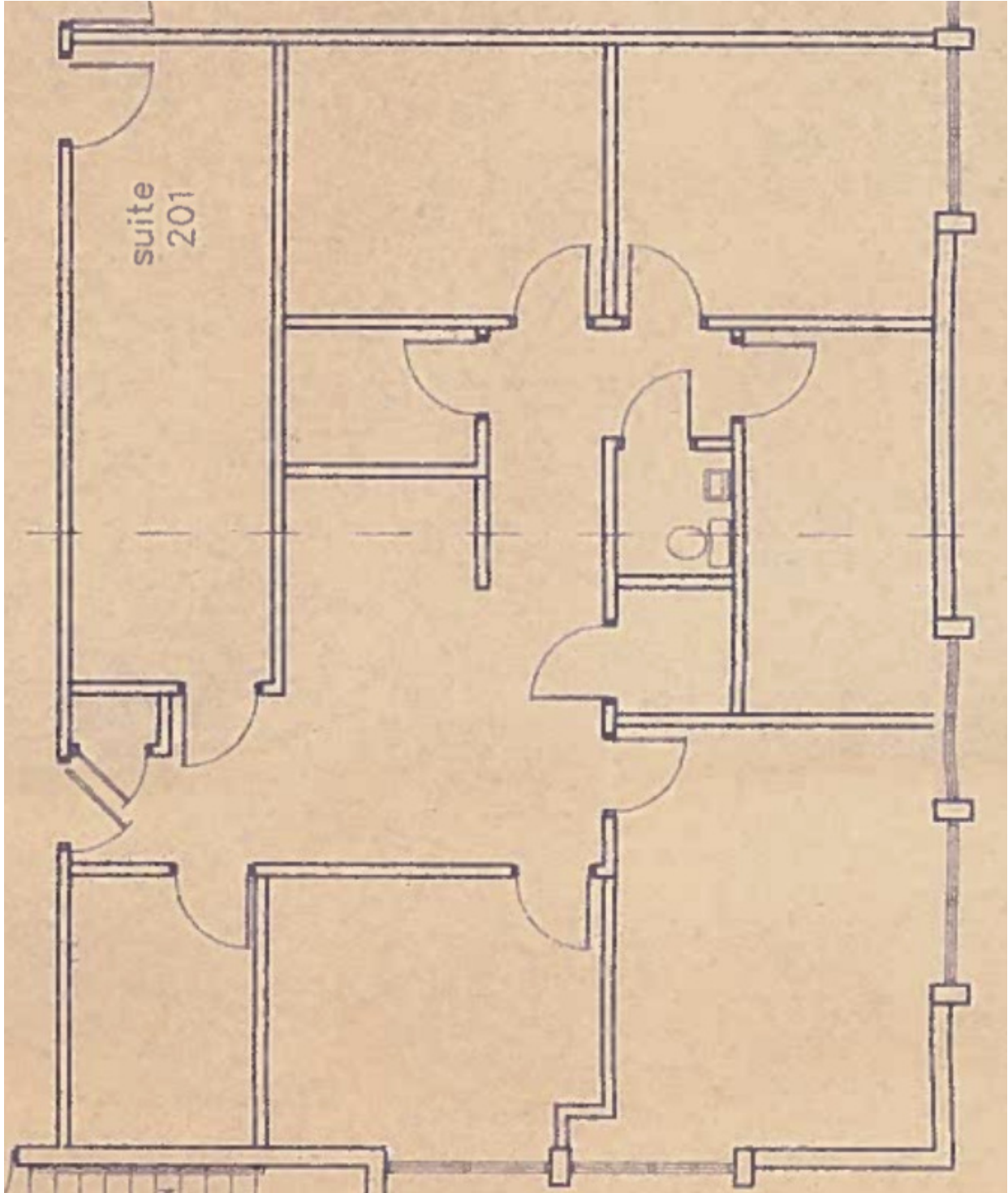
Noah Jensen    Ryan R. Dinsdale, CCIM  
240.361.8182    561.504.6169  
njensen@kdcre.com    rdinsdale@kdcre.com

## KINGS POINT MEDICAL PROFESSIONAL BLDG

15127 JOG RD, DELRAY BEACH, FL 33446



### Floor Plan - Suite 201



**KD COMMERCIAL**  
REAL ESTATE

Noah Jensen  
240.361.8182  
njensen@kdcre.com

Ryan R. Dinsdale, CCIM  
561.504.6169  
rdinsdale@kdcre.com

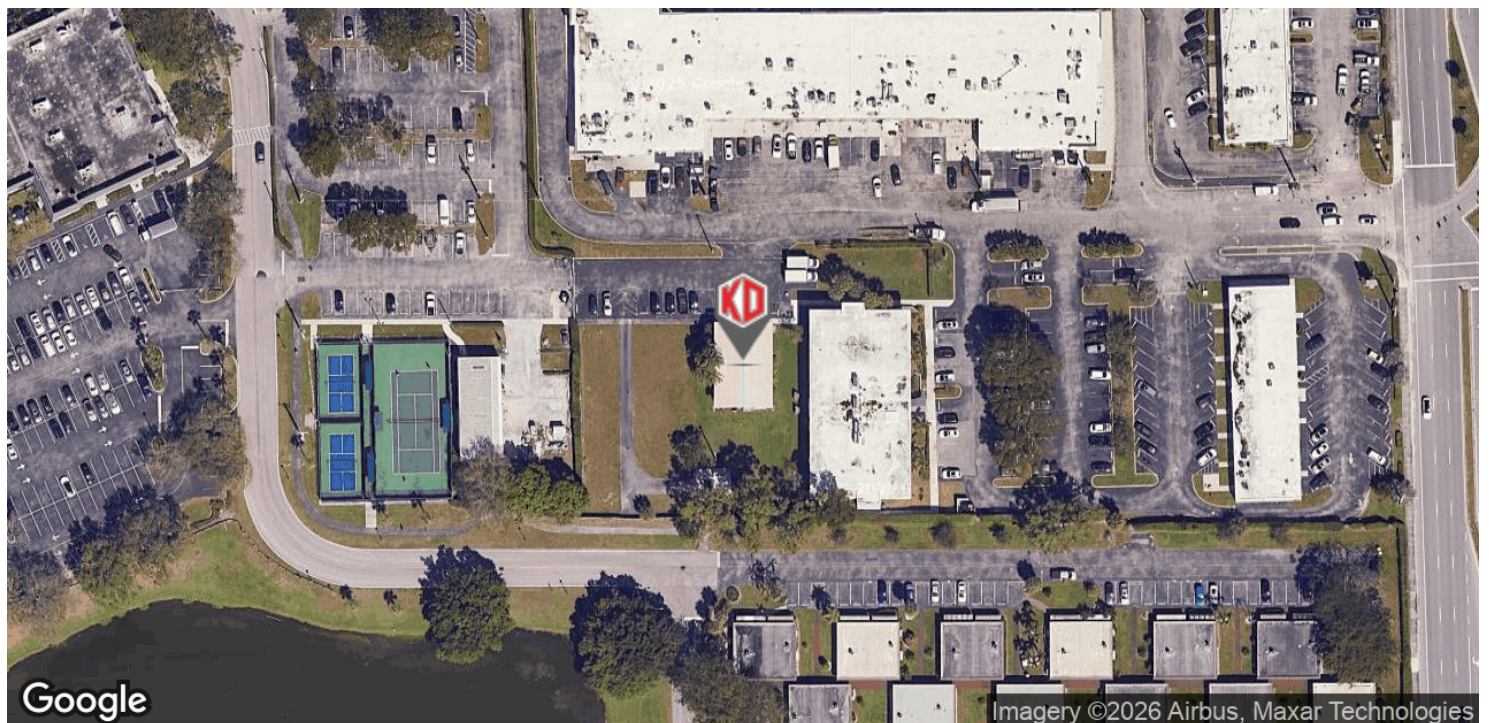
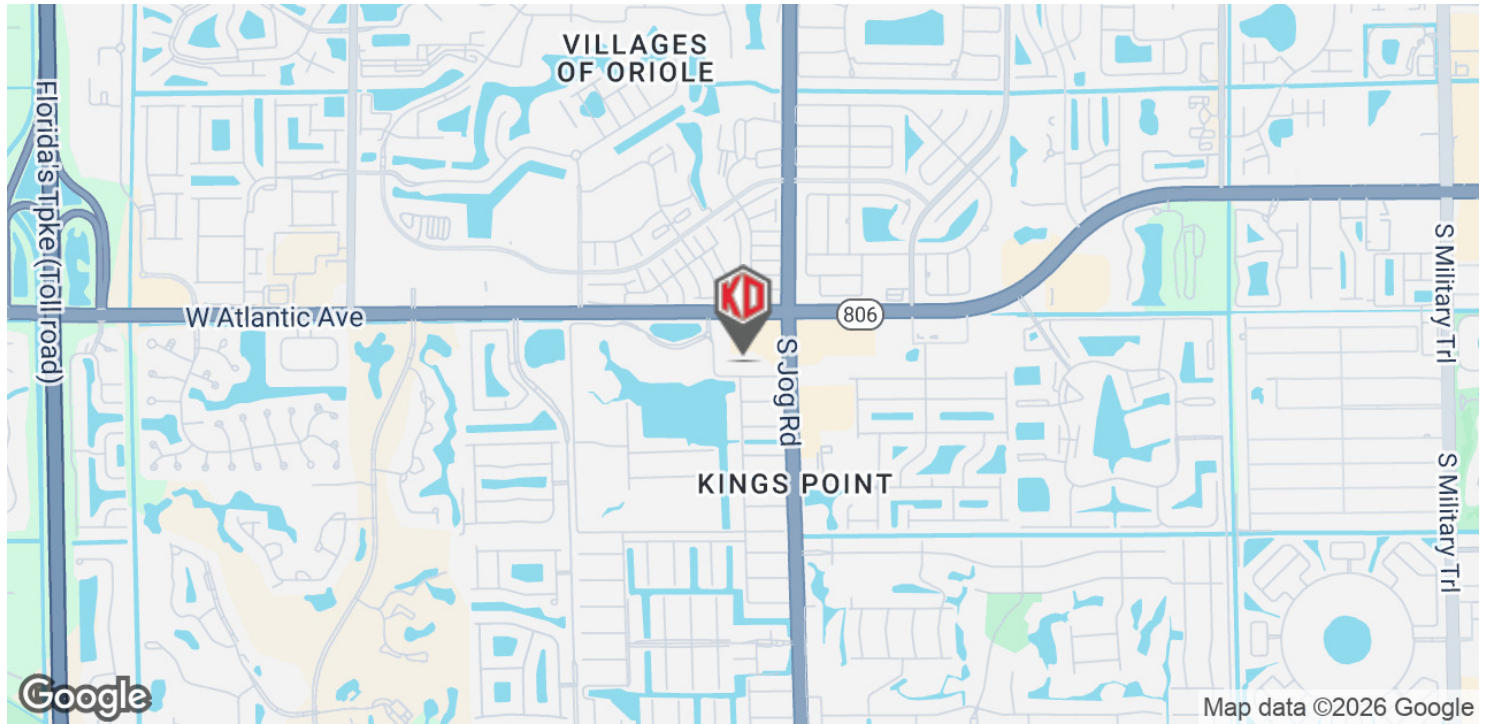


# KINGS POINT MEDICAL PROFESSIONAL BLDG

15127 JOG RD, DELRAY BEACH, FL 33446



## Property Location



**KD COMMERCIAL**  
REAL ESTATE

Noah Jensen  
240.361.8182  
njensen@kdcre.com

Ryan R. Dinsdale, CCIM  
561.504.6169  
rdinsdale@kdcre.com

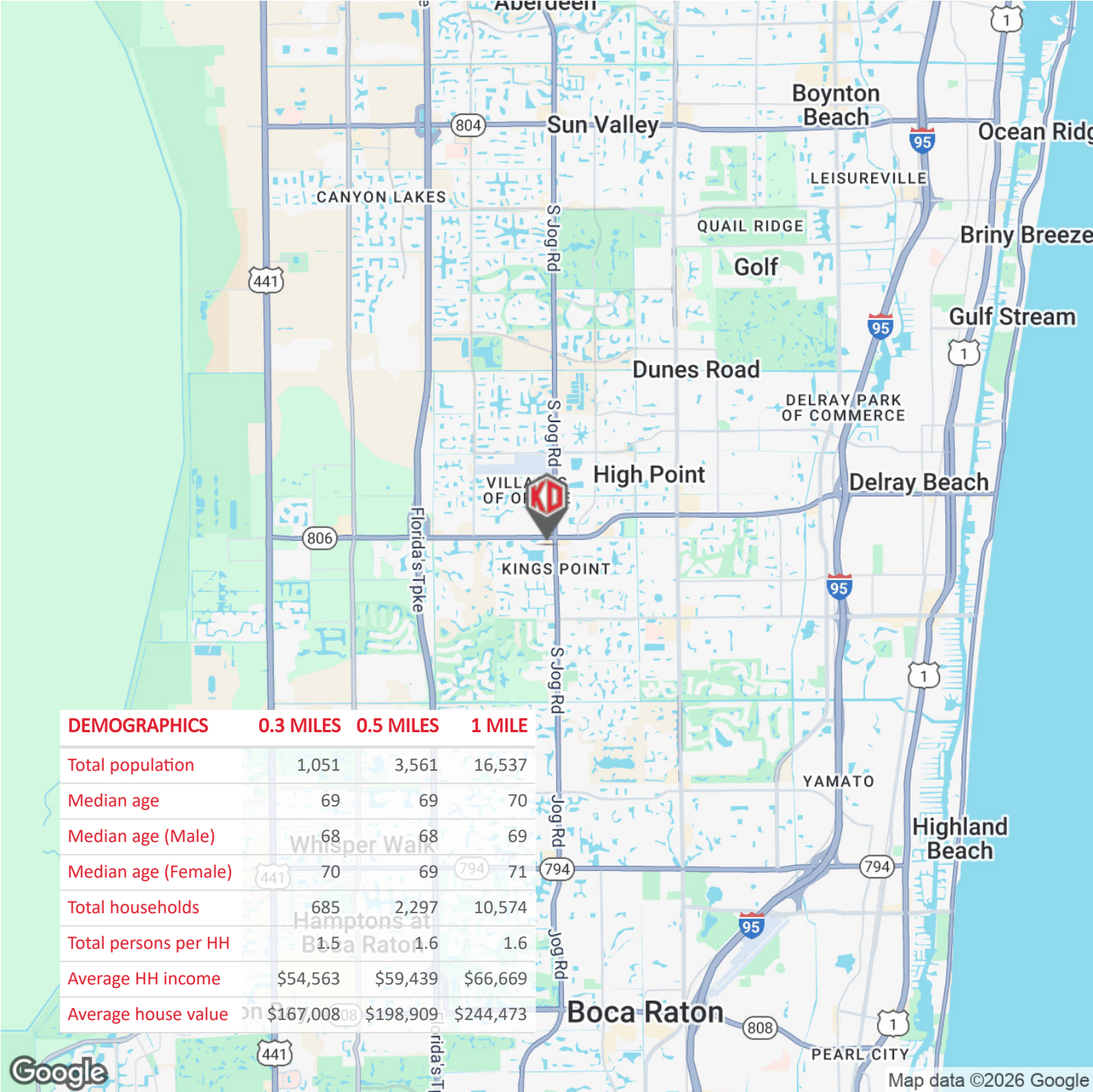


# KINGS POINT MEDICAL PROFESSIONAL BLDG

15127 JOG RD, DELRAY BEACH, FL 33446



## Property Location



**KD COMMERCIAL**  
REAL ESTATE

Noah Jensen    Ryan R. Dinsdale, CCIM  
240.361.8182    561.504.6169  
njensen@kdcre.com    rdinsdale@kdcre.com