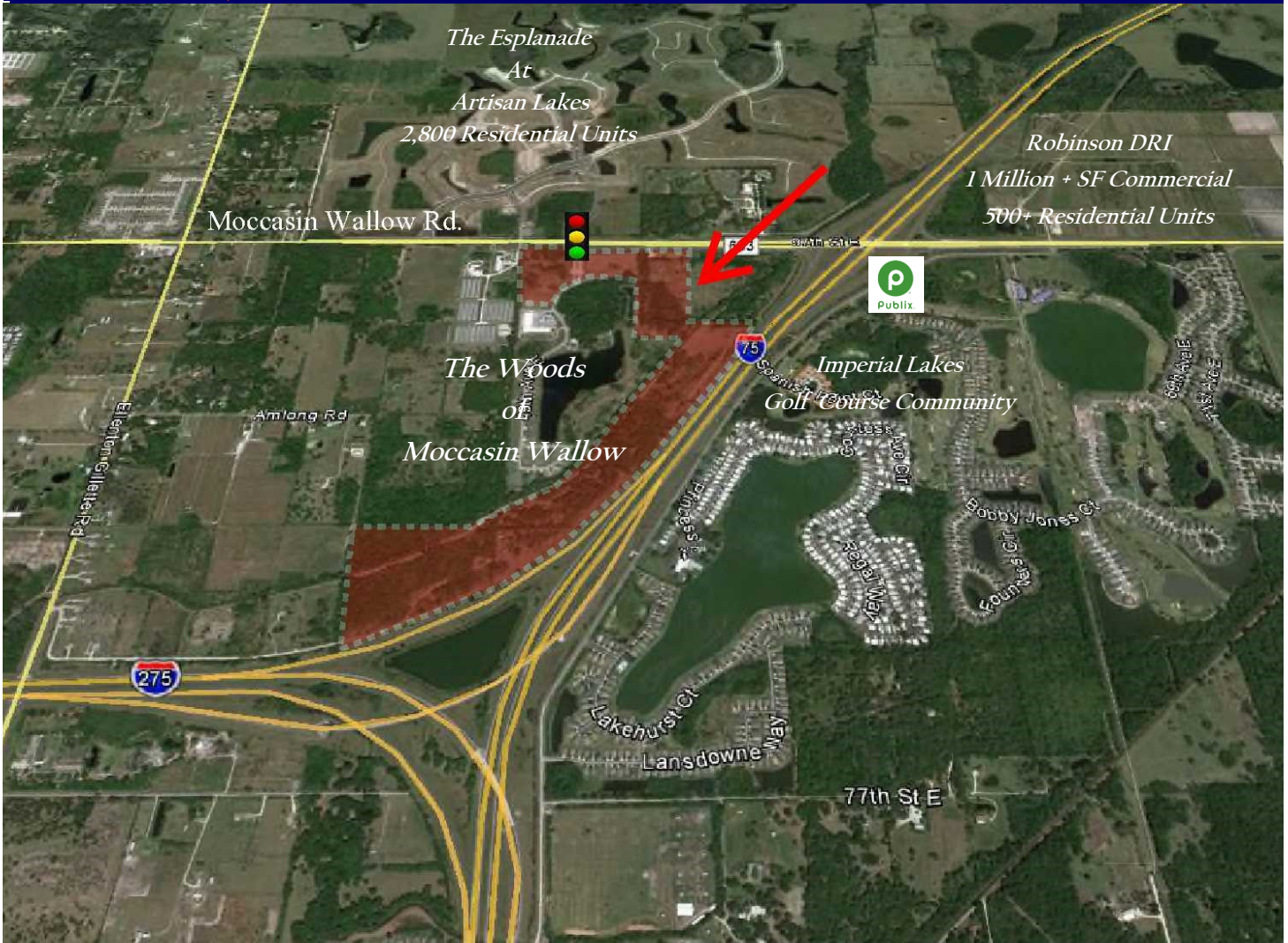


Commercial Sites

Moccasin Wallow & I-75

Manatee County, FL



The Woods Of Moccasin Wallow

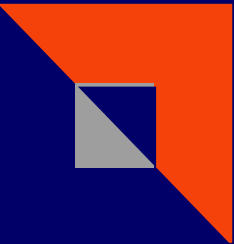
Retail / Hotel / Medical / Restaurant

- ◆ Located at the Fully signalized Intersection of 96th Street East & 49th Avenue East
- ◆ Major Growth Corridor with Existing & Approved Communities Including 64,000 New Homes
- ◆ Easy On/Off Full Interchange Access to I-75 / 2020 FDOT Over 81,800
- ◆ Easy access to Sarasota (20 minutes), Downtown St. Pete. (25 minutes) and Tampa (30 minutes)

813.933.0629

Carol Smiddy X201

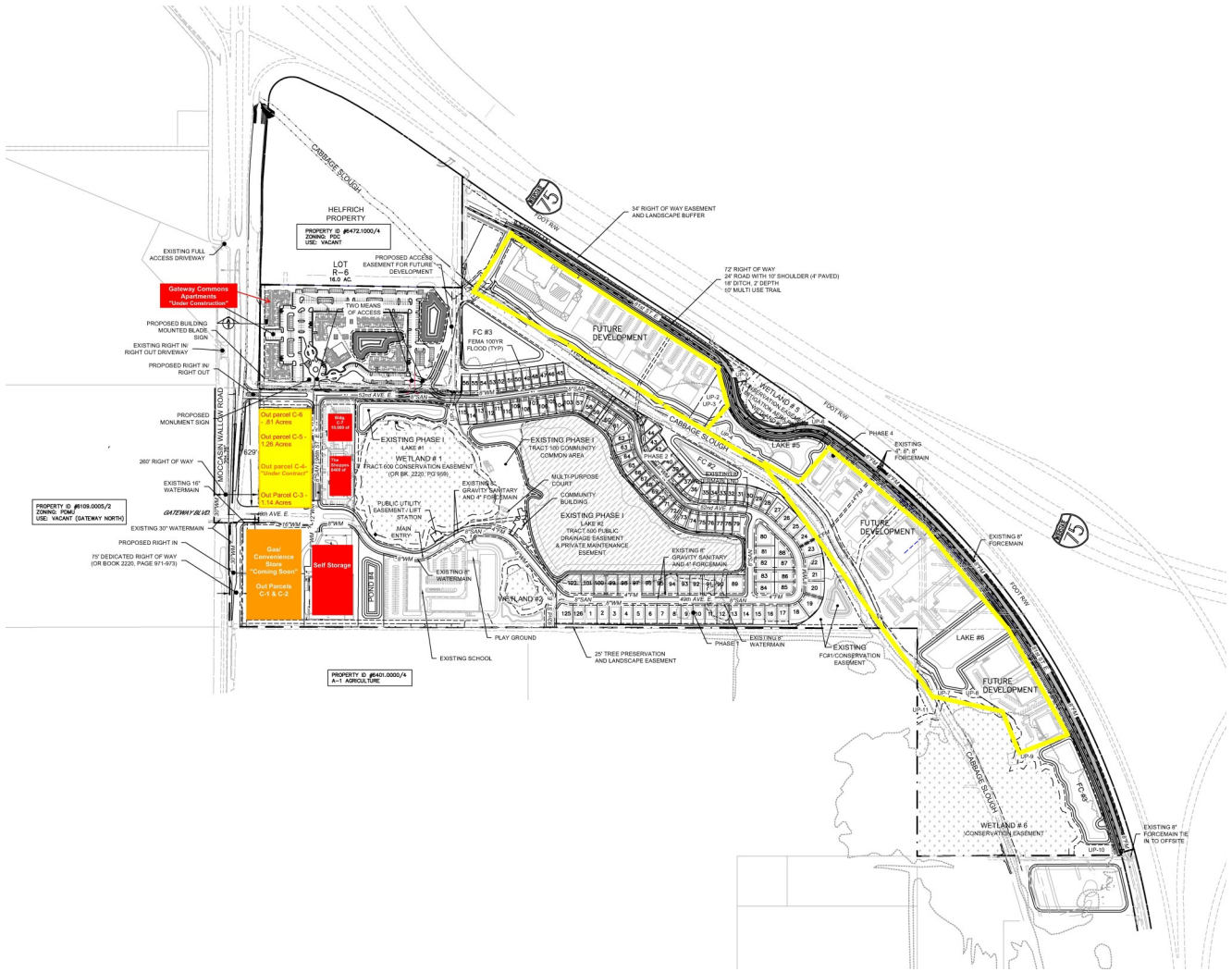
Danielle Trzcinski X210



Commerical Parcels

Retail / Hotel / Medical / Restaurant

Now Available



813.933.0629

Carol Smiddy X201

Danielle Trzcinski X210