

162-15 JAMAICA AVENUE

BETWEEN 162ND & 163RD STREETS | JAMAICA, QUEENS



162-15 JAMAICA AVENUE

BETWEEN 162ND & 163RD STREETS | JAMAICA, QUEENS

PROPERTY HIGHLIGHTS:

- Prime Jamaica Avenue retail corridor
- All uses considered
- Loading dock and freight elevator available
- Easily accessible to and from Manhattan via LIRR and subway
- Additional 15,000 SF available on 3rd & 4th floors
- Neighboring tenants include: *Burlington, Chase Bank, Chick-fil-A, H&M, Home Depot, JD Sports, Old Navy, Primark, Raising Canes, Snipes, Target & more!*

SIZE:

~7,200 SF Ground Floor
~8,300 SF Second Floor
10,500 SF Third Floor
4,500 SF Fourth Floor

FRONTAGE:

Ground Floor - 21'
Second Floor - 50'

CEILING HEIGHTS:

15' Ground Floor
17' Second Floor
13' - 15' Third Floor
13' - 15' Fourth Floor

POSSESSION:

Immediate

ASKING RENT:

Upon Request

TRANSPORTATION:

E J Z MTA Long Island Rail Road



VIEW FROM CORNER OF 163RD & JAMAICA AVE



ksr

All information supplied in this marketing presentation and/or flyer is from sources deemed reliable and is furnished subject to errors, omissions, modifications, removal of listings from sale/lease and to any listing condition. Any square footage, dimensions, floor plans and/or technical data set forth are approximations and are subject to further elaboration/confirmation.

FOR MORE INFORMATION, PLEASE CONTACT:

OHAD BABO

OHadB@ksrny.com
646.234.9250

BARRY FISHBACH

Fishbach@ksrny.com
917.273.6752

MENDY SMOLLER

MSmoller@ksrny.com
858.867.9984

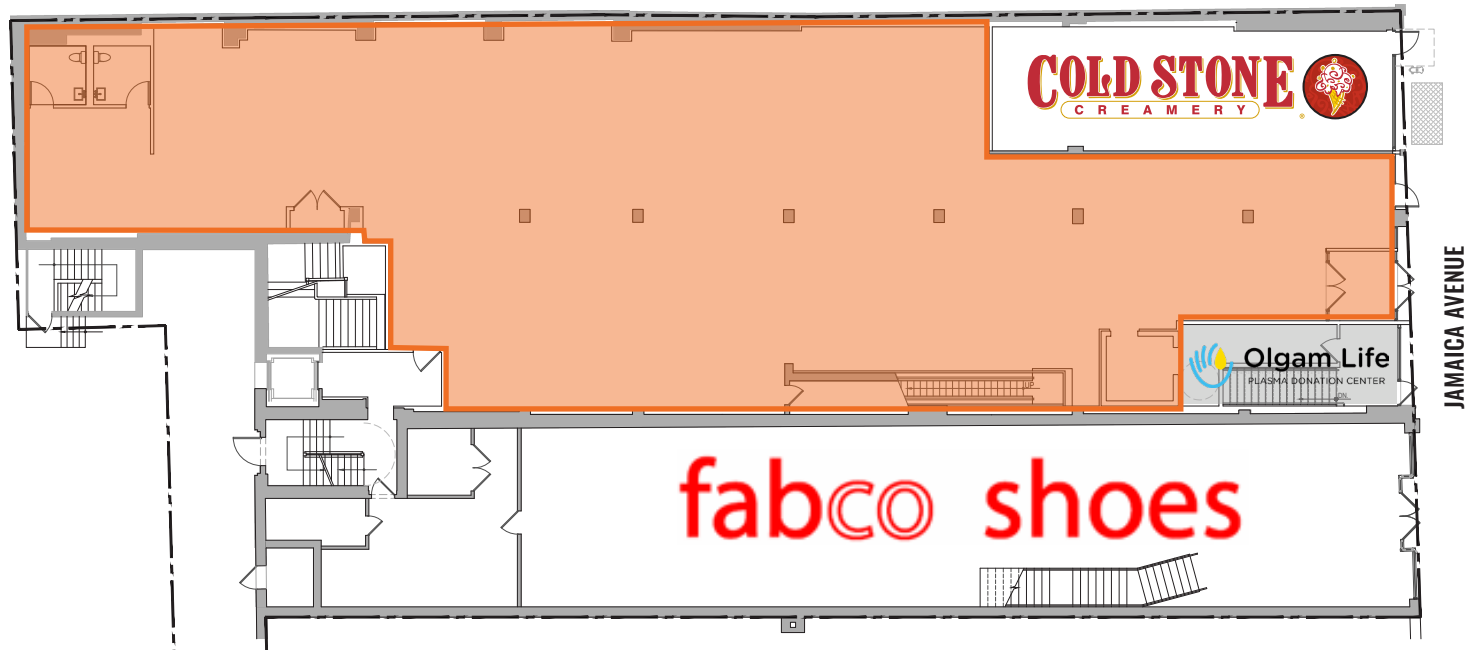


All information supplied in this marketing presentation and/or flyer is from sources deemed reliable and is furnished subject to errors, omissions, modifications, removal of listings from sale/lease and to any listing condition. Any square footage, dimensions, floor plans and/or technical data set forth are approximations and are subject to further elaboration/confirmation.

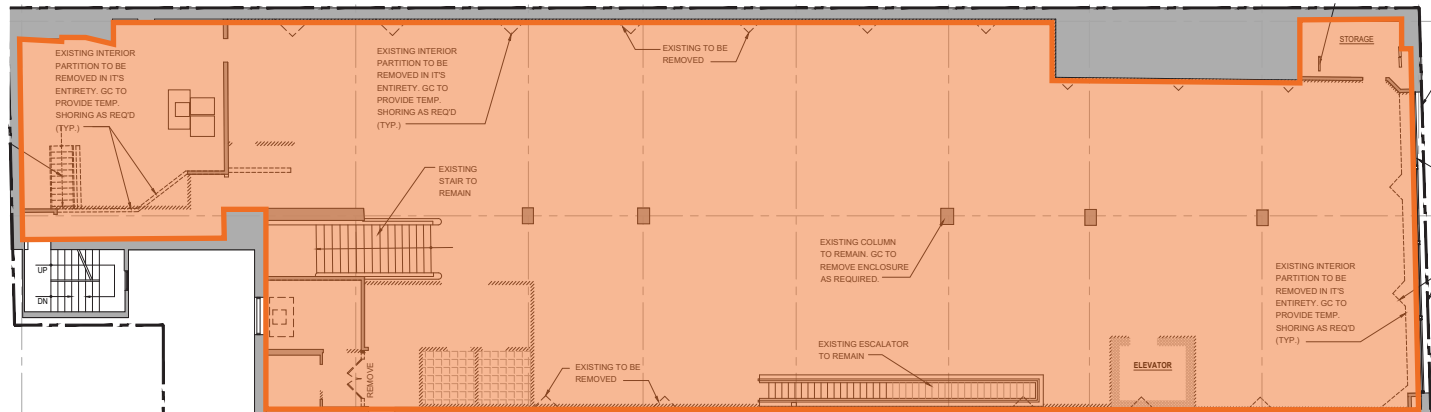
162-15 JAMAICA AVENUE

BETWEEN 162ND & 163RD STREETS | JAMAICA, QUEENS

Floor Plans:
Ground Floor - 7,200 SF (approx)



Second Floor - 8,300 SF (approx)

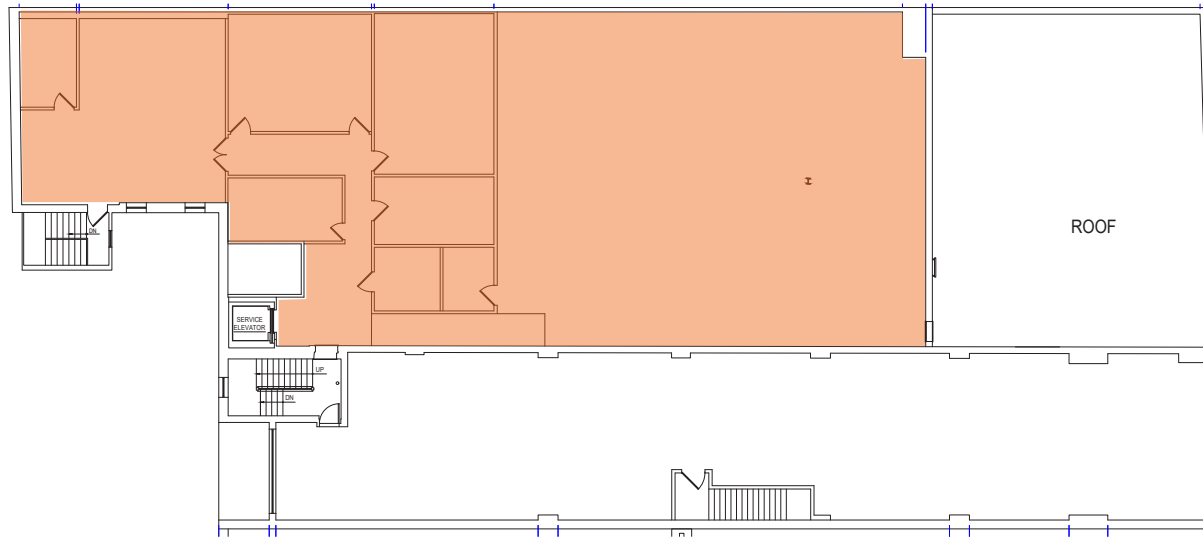


162-15 JAMAICA AVENUE

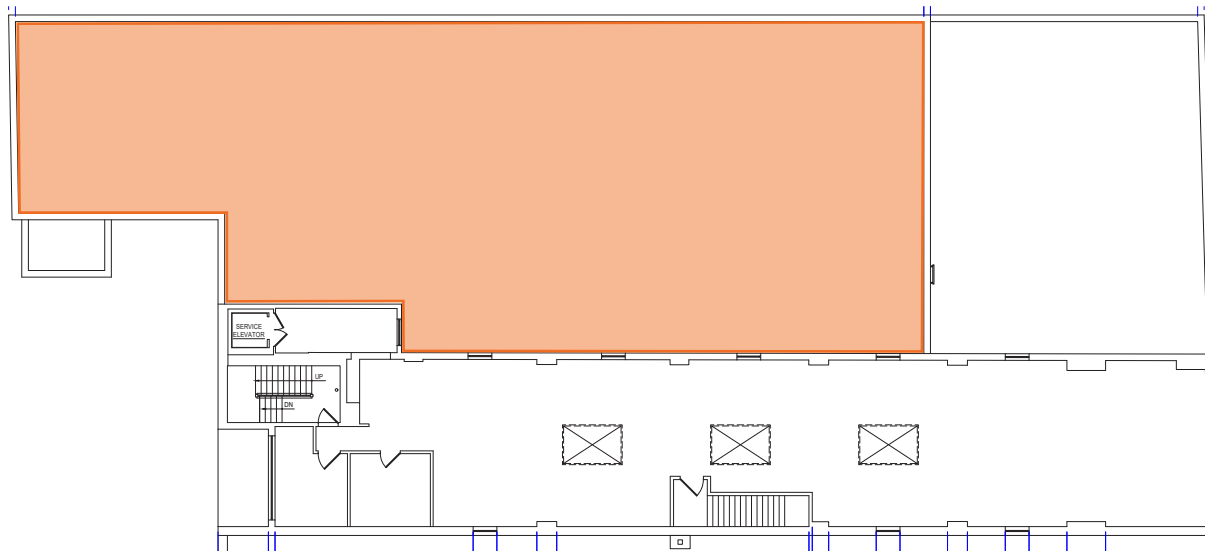
BETWEEN 162ND & 163RD STREETS | JAMAICA, QUEENS

Floor Plans:

Third Floor - 10,500 SF (approx)



Fourth Floor - 4,500 SF (approx)



162-15 JAMAICA AVENUE

BETWEEN 162ND & 163RD STREETS | JAMAICA, QUEENS

About Jamaica, Queens

You may have heard of Jamaica, Queens or passed through the area on your way to John F. Kennedy International Airport – The core of Jamaica, roughly between Hillside Avenue, Linden Boulevard, Merrick Boulevard and the Van Wyck Expressway, is a scrappy area with a lot of heart, though greater Jamaica takes in neighboring areas such as South Jamaica, Springfield Gardens, Rosedale, Laurelton and Jamaica Estates. This southeastern corner of Queens is a great way to uncover a frequently overlooked cultural hub and support local businesses.

