

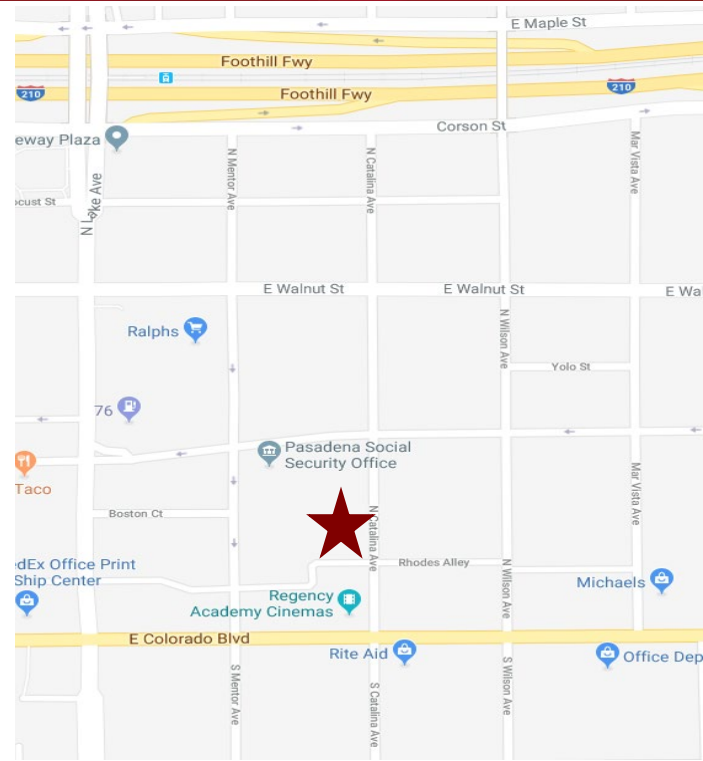
# OFFICE SUITES FOR LEASE



## 69 N. CATALINA AVENUE, PASADENA, CA

FOR LEASE

- AVAILABLE SPACE:** Four (4) fully furnished turn-key offices located on the second (2<sup>nd</sup>) floor.
- MONTHLY RENTAL:** \$4,400.00 per month or \$1,100.00 per office, Full Service Gross.  
Landlord pays utilities and interior janitorial.
- AVAILABLE:** January 1, 2025.
- PARKING:** Adjacent to public parking lot. Current prevailing rate at \$40.00/unreserved parking space.
- AMENITIES:**
- \* Historically significant property. First Greene and Greene Craftsman Style home built in 1903.
  - \* Two story restored craftsman building with four (4) offices, storage area and shared kitchen, conference room, and restrooms.
  - \* Private 2<sup>nd</sup> floor stairway access to suite.
  - \* Beautiful courtyard and fountain.
  - \* Close proximity to Caltech and walking distance to Colorado Blvd. and Lave Ave. and restaurants.
  - \* Close to 210 and Gold Line station.



For more Information, Contact:

**Dan Alle**

[dalle@redstonecre.com](mailto:dalle@redstonecre.com)

Lic. # No. 01017941

(626) 483-6358

**Julie Alle**

[jalle@redstonecre.com](mailto:jalle@redstonecre.com)

Lic. # No. 01889085

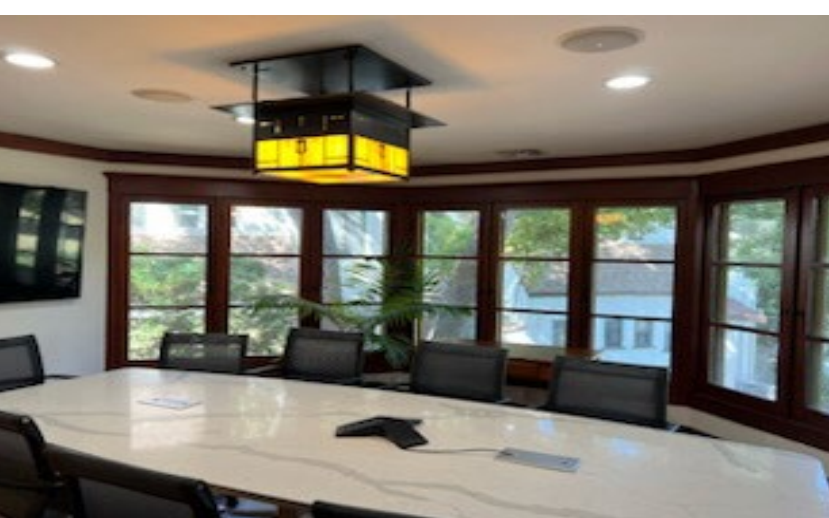
(626) 864-3927



All information contained herein is from sources deemed reliable but has not been verified and is submitted without any warranty or representation, expressed or implied, as to its accuracy, and Redstone Commercial Real Estate, License #01525534, assumes no liability for errors or omissions of any kind, change of price, rental or other conditions, including, without limitation, prior sale, lease or financing or withdrawal without notice. This presentation is for information only and under no circumstances whatsoever is to be deemed a contract, note, memorandum or any other form of binding commitment.

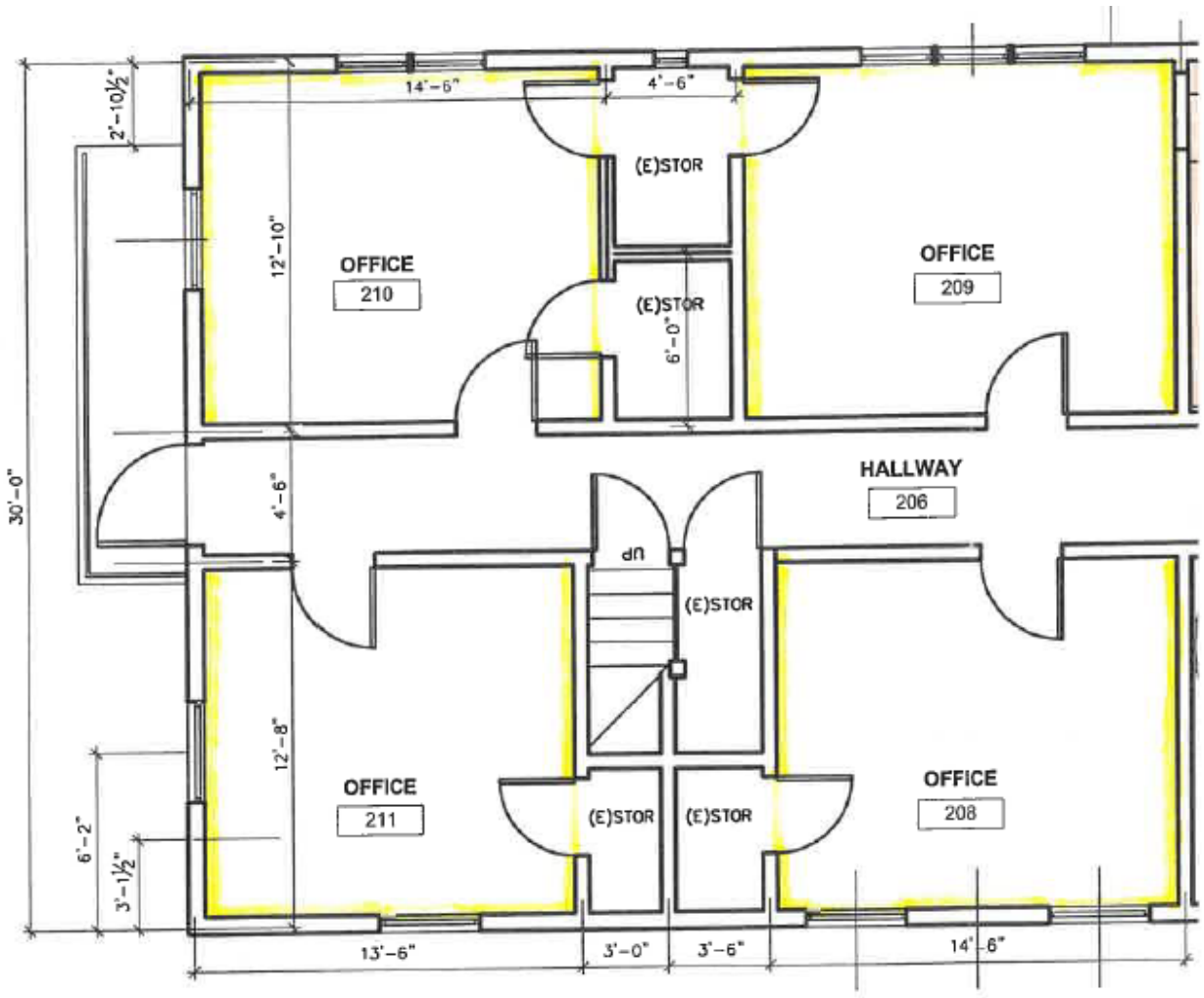
# 69 N. CATALINA AVENUE

## INTERIOR IMAGES



# 69 N. CATALINA AVENUE

## SECOND FLOOR OFFICES



# AMENITY MAP

