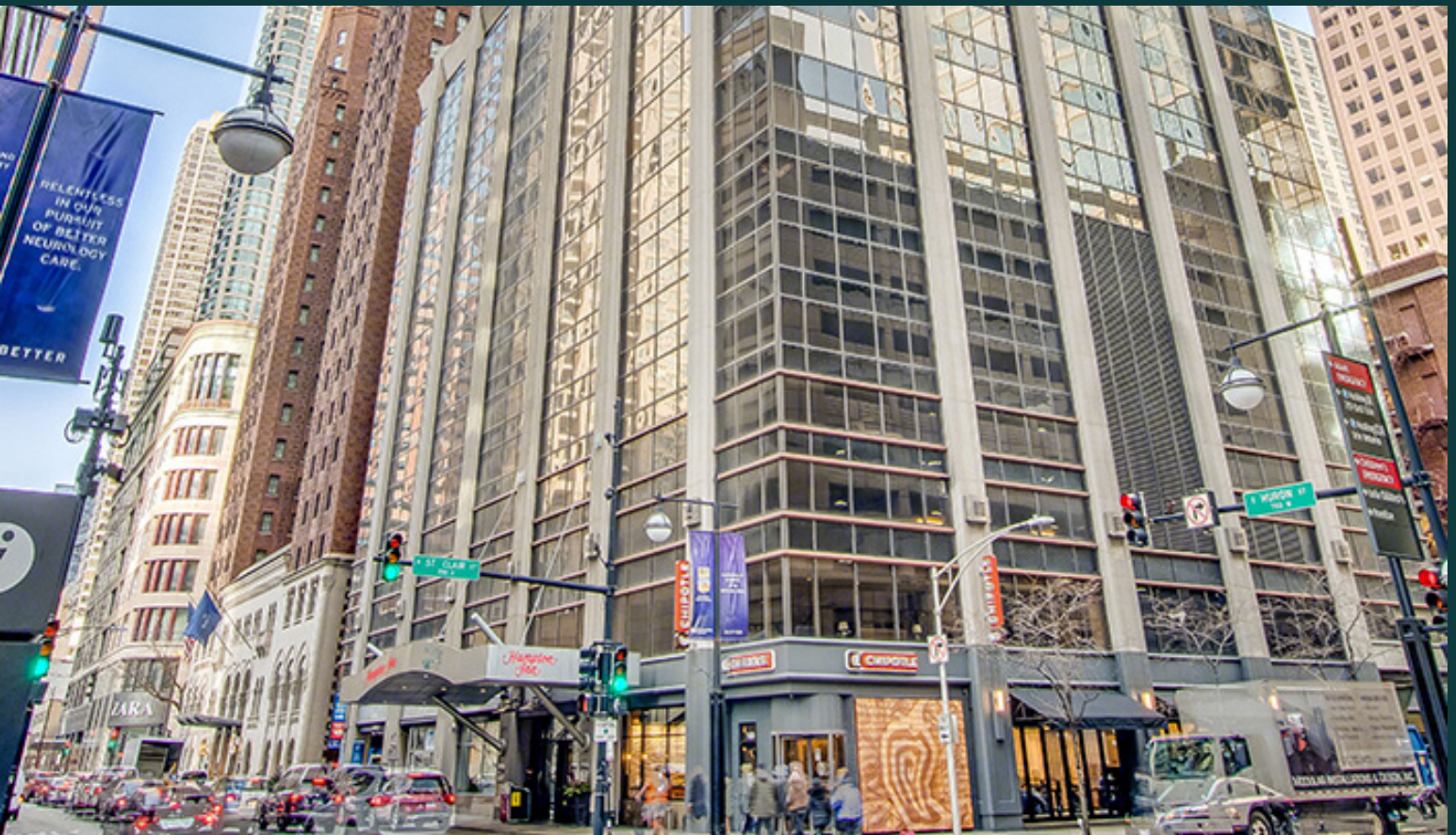


Huron Medical Office Building

150-160 E Huron Street, Chicago, IL 60611



AVAILABLE SPACE
1,524 – 15,716 RSF

 **VIEW SUITES**

- 7 floors of Class A medical office space adjacent to Northwestern Memorial Hospital
- Northwestern Medicine, premier anchor tenant
- Half block from Michigan Avenue, one mile from Lake Shore Drive, and one mile from I-90
- On-site security, on-site property manager, and views of surrounding cityscape
- Connected parking garage available for patients and staff
- Generous Tenant Improvement Allowance with flexible terms

Class A medical offices with premier tenant in the heart of Magnificent Mile.

POPULATION (5-MILE RADIUS)

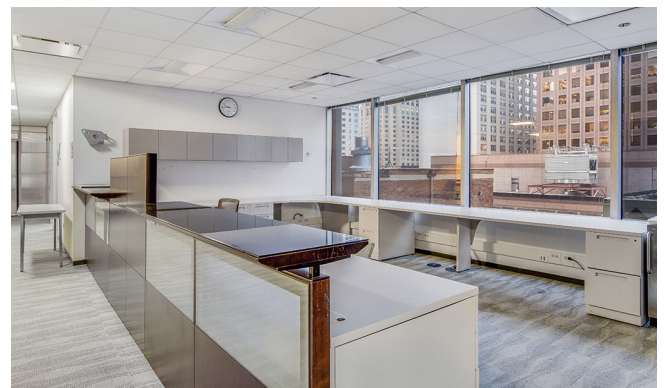
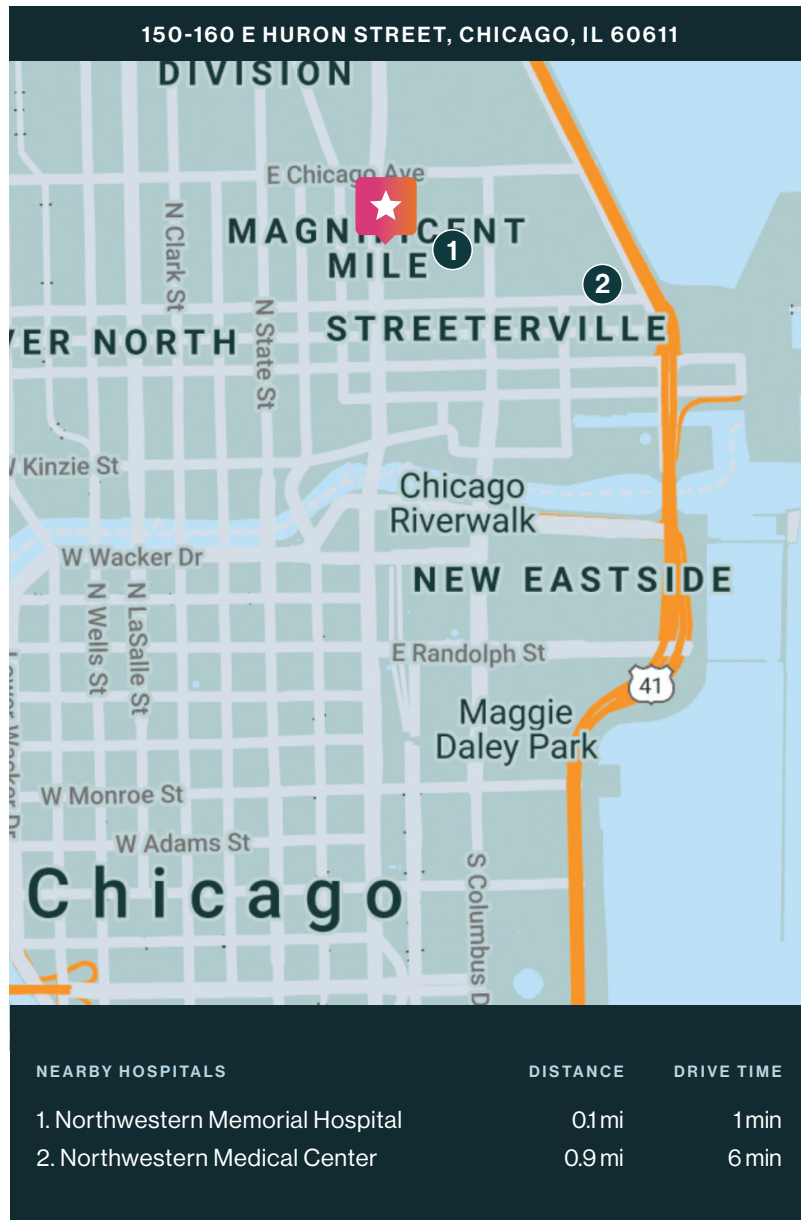
768,204

AVERAGE HOUSEHOLD INCOME (5-MILE RADIUS)

\$118,476

PERCENT OF POPULATION INSURED (5-MILE RADIUS)

84.3%



SURROUNDING POINTS OF INTEREST

- Walgreens Pharmacy
- Whole Foods Market
- Water Tower Place
- The Magnificent Mile
- Hampton Inn
- Gold Coast Fitness Club
- Starbucks Reserve Roastery
- Kafenio Lavazza
- Corner Bakery Café
- Beatrix Market
- Northwestern University
- Loyola University

LINDSAY KNOLL, SVP | LEASING

217.201.6601 cell
lknoll@remedymed.com

CAREY DIPASQUALE, ASSOCIATE | LEASING

585.278.8608 cell
cdipasquale@remedymed.com