

FOR LEASE

Owned and Operated by



Hayward Business Park

30800 Santana Street, Hayward, CA

±14,182 SF



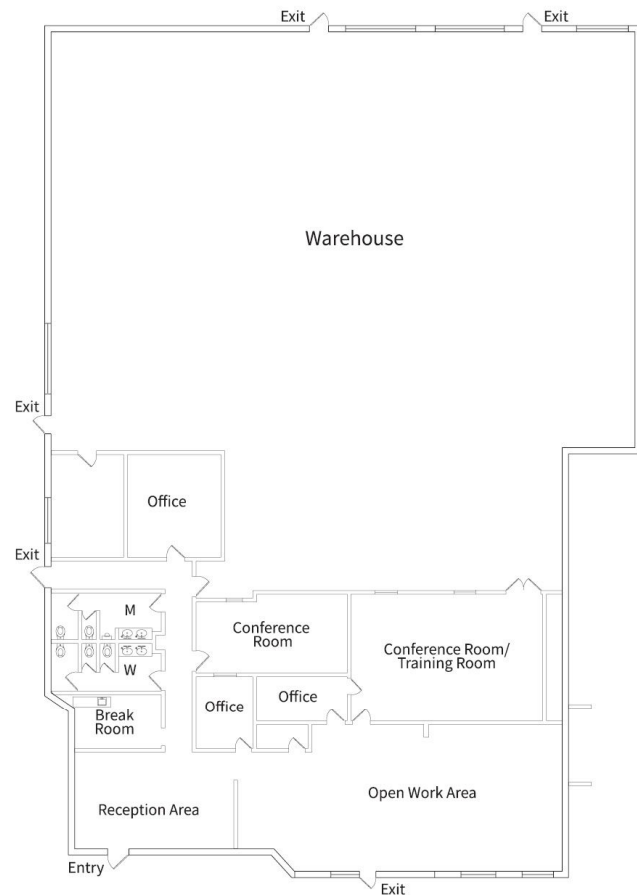
**LEASING INFO
& CONTACT**

Greig Lagomarsino, SIOR
Mark Maguire, SIOR

(510) 433-5809 / greig.lago@colliers.com
(510) 219-7854 / mark.maguire@colliers.com



This is not an offer or acceptance of an offer to lease space. A lease will only be offered or made in a written agreement signed by landlord. No representation or warranty of any kind is made by landlord unless set forth in a written definitive lease executed by the landlord.



Property Specifications:

- Corner unit
- ±30% office, balance warehouse space
- Four (4) grade level doors
- One (1) dock high door
- Reception area and breakroom
- Two (2) large conference and training rooms
- ±20-22' clear height
- ±400 amps, 277/480V, 3 phase
- Fully sprinklered
- Easy access to Hwy I-880

Lease Rate: \$1.40/SF/Month, NNN
(\$0.31/SF/Month, OPEX)

Available now.

Call Brokers for Touring Instructions.

