

For Lease

# Medical/Office Space Available



[Click for a Virtual Tour, Suite 210](#) 

8945 W. Post Rd.  
Las Vegas, NV 89148

#### Point of contact

**Angie Devane**  
Senior Associate  
702.300.4202  
adevane@logicCRE.com  
S.0195648

**Michael Keating, SIOR**  
Partner  
775.386.9727  
mkeating@logicCRE.com  
S.0174942

# Listing Snapshot



**\$1.95 PSF NNN**  
Lease Rate



**± 2,370 - 5,385 SF**  
Available Square Footage



**\$0.52 PSF**  
CAM

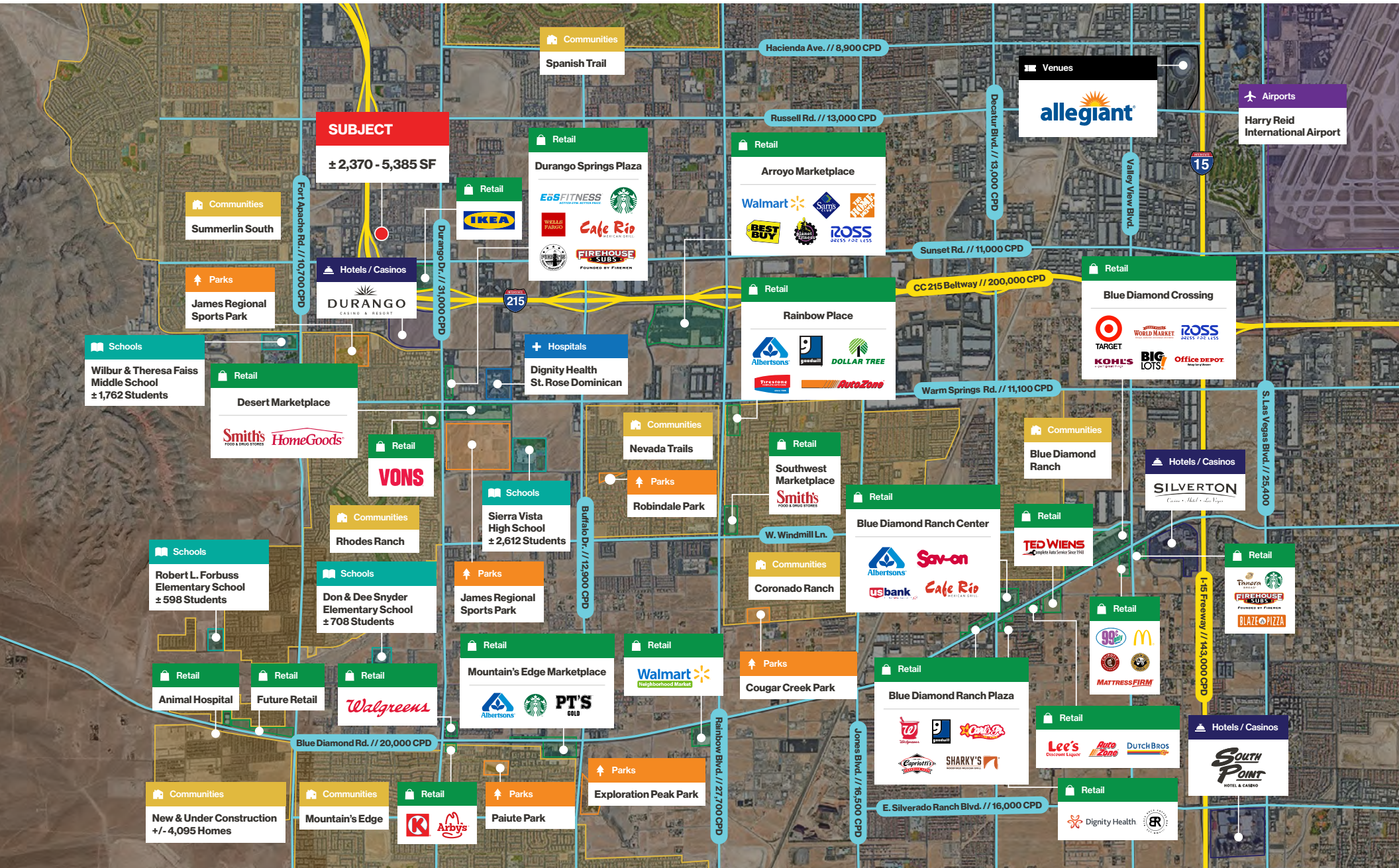
## Property Highlights

- Generous TI allowances for the right tenant
- Owner seeking Medical or Traditional Office tenants
- Prime location in the highly desirable Southwest submarket
- Located off the CC-215 Beltway, providing easy access to major highways and nearby amenities
- Conveniently located within reach of Southern Hills Hospital and Medical Center
- Commercial Core (CC) Zoning

## Demographics

	1-mile	3-mile	5-mile
2025 Population	22,182	143,380	354,976
2025 Average Household Income	\$117,585	\$122,924	\$120,172
2025 Total Households	8,969	56,997	138,258







Office  
Helen Xu, DPM FACFAS  
Elite Vein Center  
Smiles for Life Dental  
Loan Simpler  
Cameron Law

Office  
Dr. Richard Krulewitz  
Center for Maternal  
Fetal Medicine  
The Minimally Invasive  
Hand Institute  
Zen Leaf Las Vegas

Multifamily  
Solana Apartment  
Homes  
± 207 Units

Retail  
PT'S  
GOLD

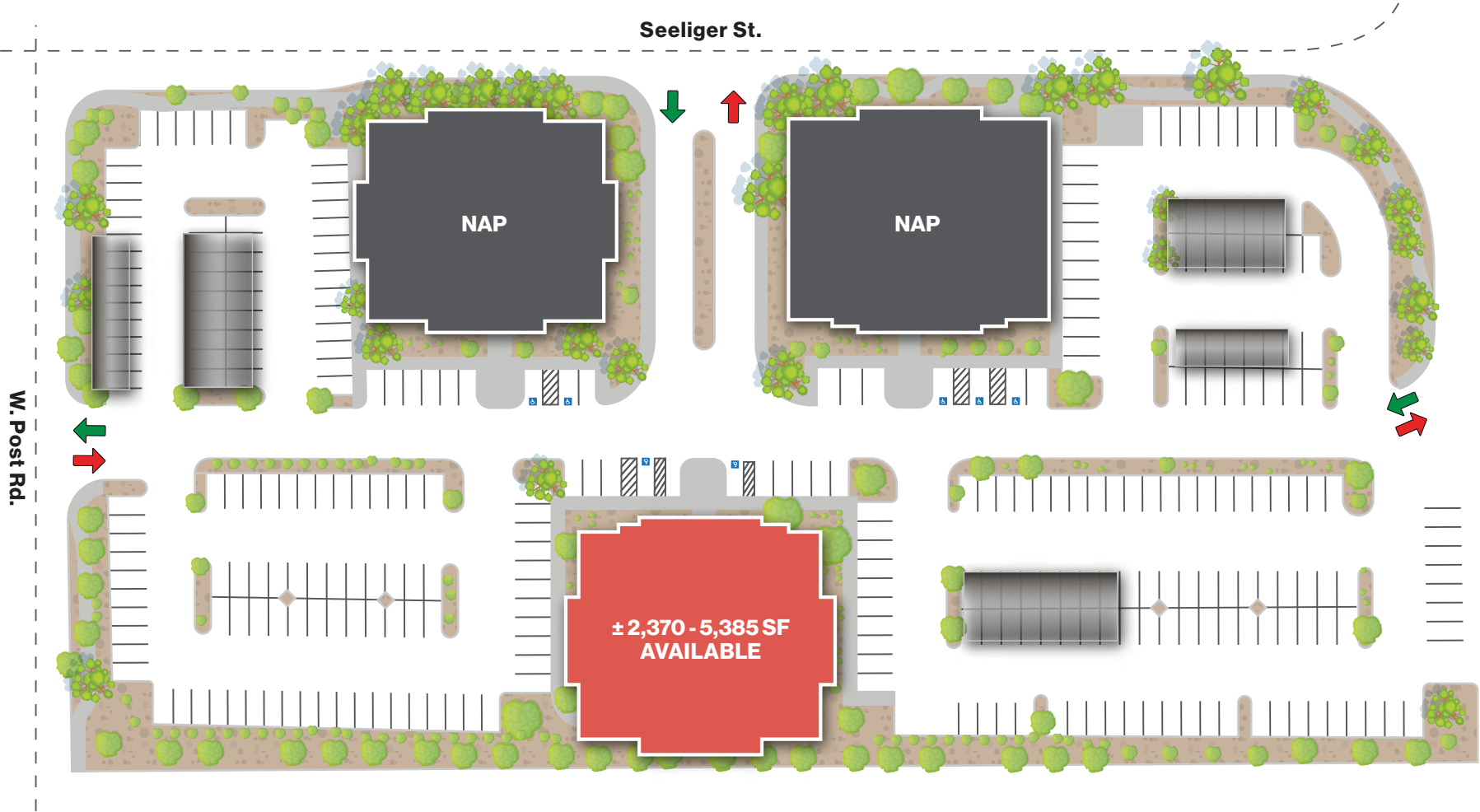
**SUBJECT**  
± 2,370 - 5,385 SF

Office  
The Wealth Consulting  
Group  
RapidVisa

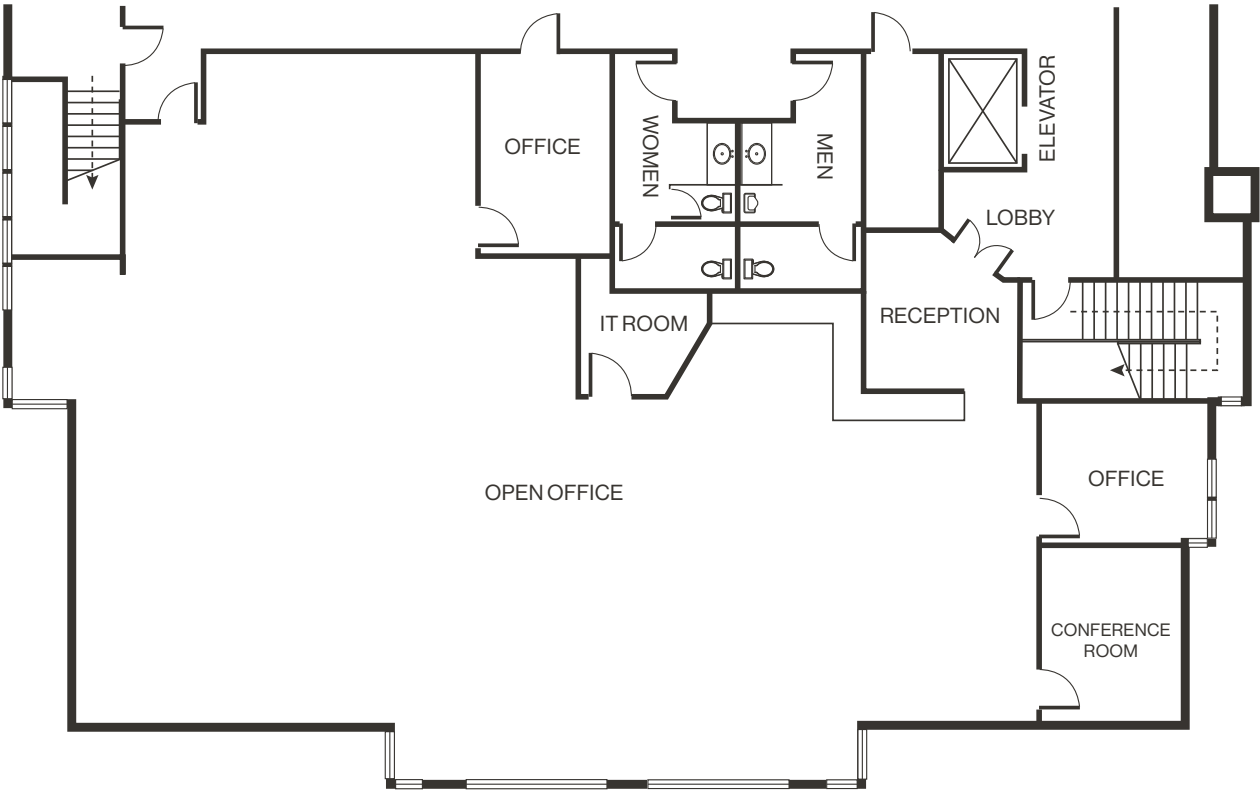
Office  
Business Tax Solutions  
All Vegas Valley Realty

Office  
Nevada State Board  
of Cosmetology  
Advanstaff HR

Multifamily  
The Alcove  
± 456 Units



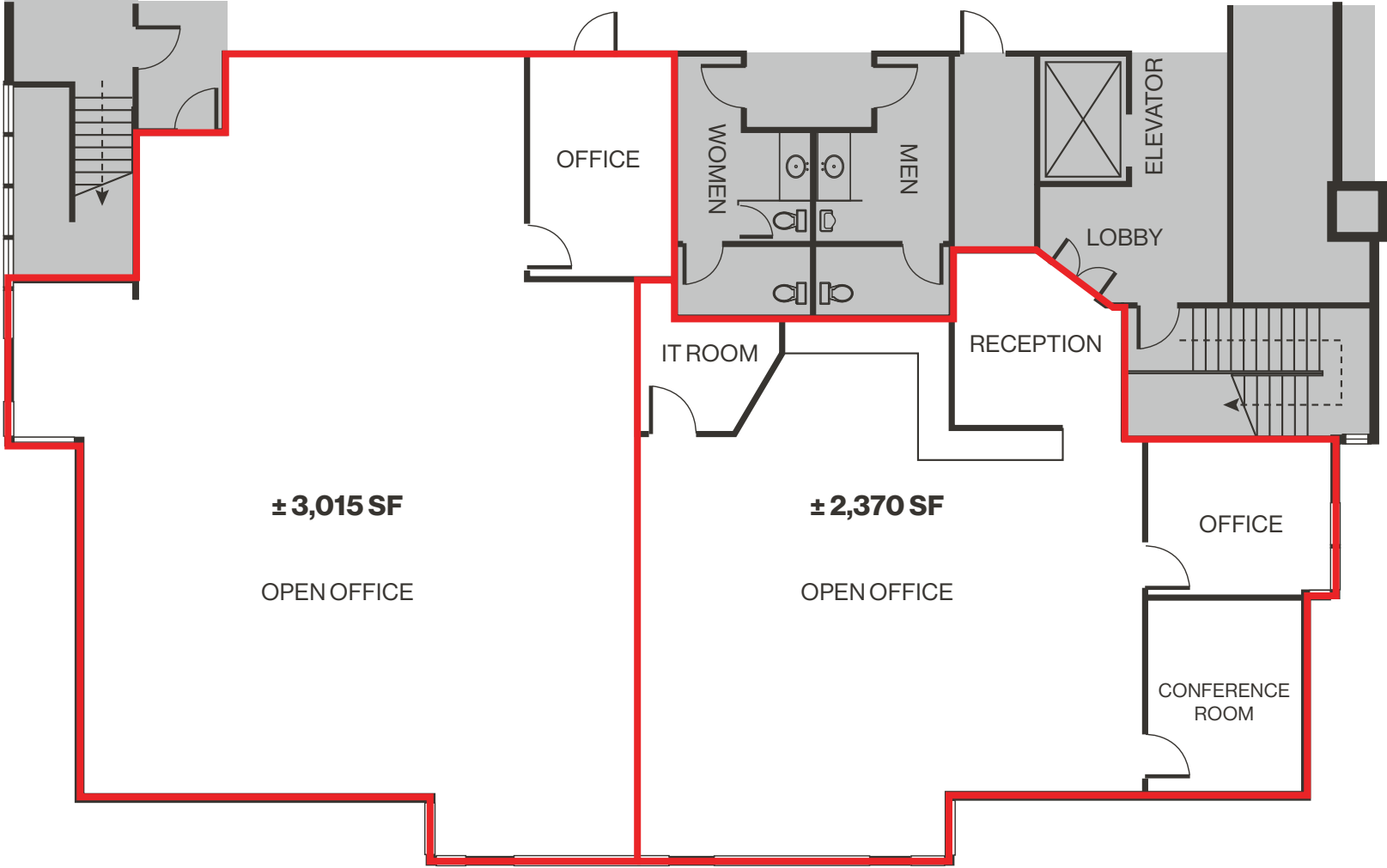
Floor Plan | Suite 210  
± 5,385 SF



[Click for a Virtual Tour](#)

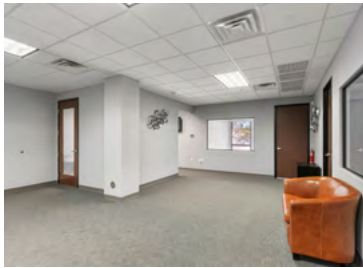
Floor Plan | Suite 210  
± 2,370 - 3,015 SF | Demising Option

Demisable     Common Area



[Click for a Virtual Tour](#) 

Property Photos



# LOGIC Commercial Real Estate

## Specializing in Brokerage and Receivership Services



Join our email list and  
connect with us on LinkedIn

The information herein was obtained from sources deemed reliable; however LOGIC Commercial Real Estate makes no guarantees, warranties or representation as to the completeness or accuracy thereof.

For inquiries please reach out to our team.

#### Point of contact

**Angie Devane**  
Senior Associate  
702.300.4202  
adevane@logicCRE.com  
S.0195648

**Michael Keating, SIOR**  
Partner  
775.386.9727  
mkeating@logicCRE.com  
S.0174942