



Keegan & Coppin
COMPANY, INC.

FOR LEASE

5600 EARHART COURT
WINDSOR, CA

HIGH CUBE INDUSTRIAL BUILDING

PRICE REDUCED!

5600

YOUR
NAME
HERE

Go beyond broker.

PRESENTED BY:

KEVIN DORAN, PARTNER
LIC # 01704987 (707) 528-1400, EXT. 270
KDORAN@KEEGANCOPPIN.COM

BRIAN KEEGAN, PARTNER
LIC # 01809537 (707) 528-1400, EXT. 249
BKEEGAN@KEEGANCOPPIN.COM



PROPERTY DETAILS



5600 EARHART COURT
WINDSOR, CA

HIGH CUBE INDUSTRIAL BUILDING

HIGHLIGHTS

- 36,296+/- sf Total Building
- 3,210+/- sf Office Space
- 29 On-Site Parking Spaces
- 22' Clear Height
- Dock-High Loading
- 400 Amp/480 Volts/3-Phase Power
- Ideal for Wine Storage
- Night Air Cooling System

DETAILS

USER SPACE

36,296+/- sf

PARKING

29 on-site parking spaces

DESCRIPTION OF PREMISES

Warehouse space available. Night air cooling system in place creates an ideal environment for wine storage. 22' max. clear height in warehouse with grade level and dock loading. Sufficient power of 400 amps/480 volts/3-phase. Approx. 3,210+/- sf of office space built out in front portion of building.

LEASE TERMS

RATE

\$1.55 psf Industrial Gross

TERMS

5 year lease minimum



PRESENTED BY:

KEVIN DORAN, PARTNER
KEEGAN & COPPIN CO., INC.
LIC # 01704987 (707) 528-1400, EXT. 270
KDORAN@KEEGANCOPPIN.COM

BRIAN KEEGAN, PARTNER
KEEGAN & COPPIN CO., INC.
LIC # 01809537 (707) 528-1400, EXT. 249
BKEEGAN@KEEGANCOPPIN.COM



AREA DESCRIPTION

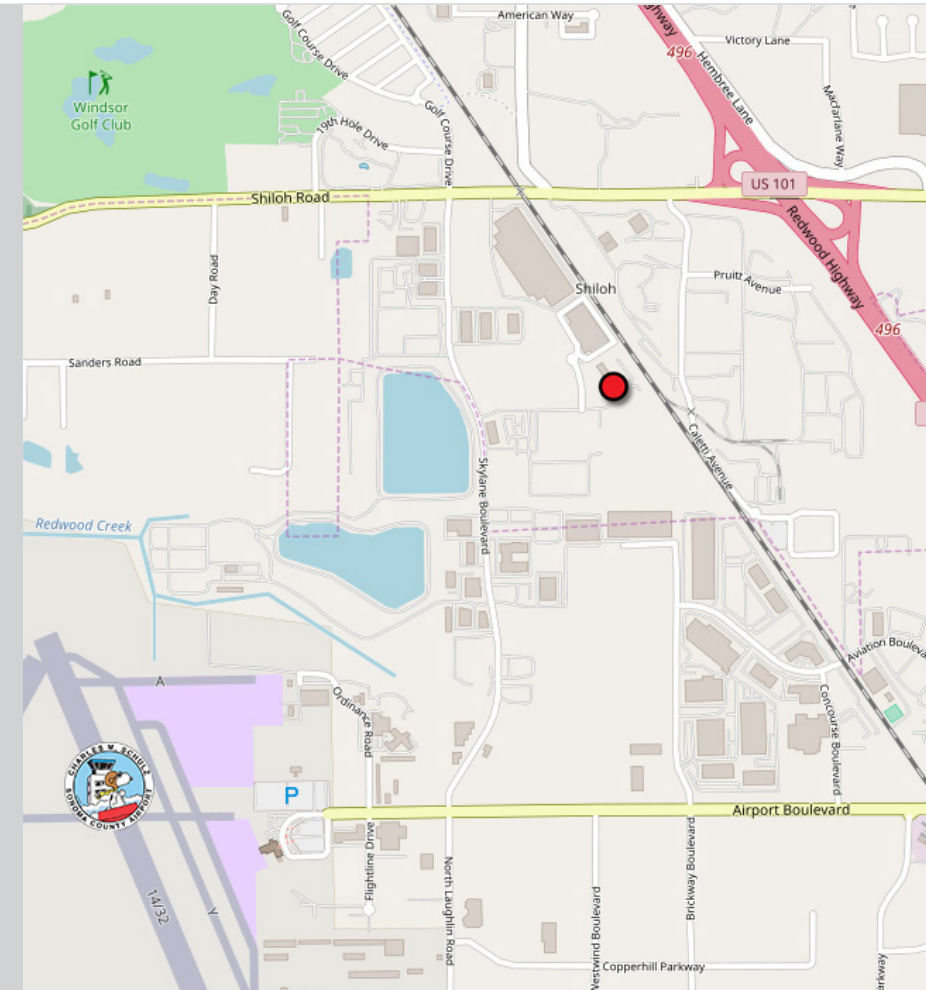


5600 EARHART COURT
WINDSOR, CA

HIGH CUBE INDUSTRIAL BUILDING

DESCRIPTION OF AREA

Situated among other industrial and office buildings. Convenient access to Hwy 101 via Shiloh Road. Near Airport Business Park in Santa Rosa with amenities including Restaurants, Health Club, Hotel, Movie Theater, and the Charles M. Schultz Sonoma County Airport.



PRESENTED BY:

KEVIN DORAN, PARTNER
KEEGAN & COPPIN CO., INC.
LIC # 01704987 (707) 528-1400, EXT. 270
KDORAN@KEEGANCOPPIN.COM

BRIAN KEEGAN, PARTNER
KEEGAN & COPPIN CO., INC.
LIC # 01809537 (707) 528-1400, EXT. 249
BKEEGAN@KEEGANCOPPIN.COM



SITE PLAN



5600 EARHART COURT
WINDSOR, CA

**HIGH CUBE
INDUSTRIAL BUILDING**



PRESENTED BY:

KEVIN DORAN, PARTNER
KEEGAN & COPPIN CO., INC.
LIC # 01704987 (707) 528-1400, EXT. 270
KDORAN@KEEGANCOPPIN.COM

BRIAN KEEGAN, PARTNER
KEEGAN & COPPIN CO., INC.
LIC # 01809537 (707) 528-1400, EXT. 249
BKEEGAN@KEEGANCOPPIN.COM

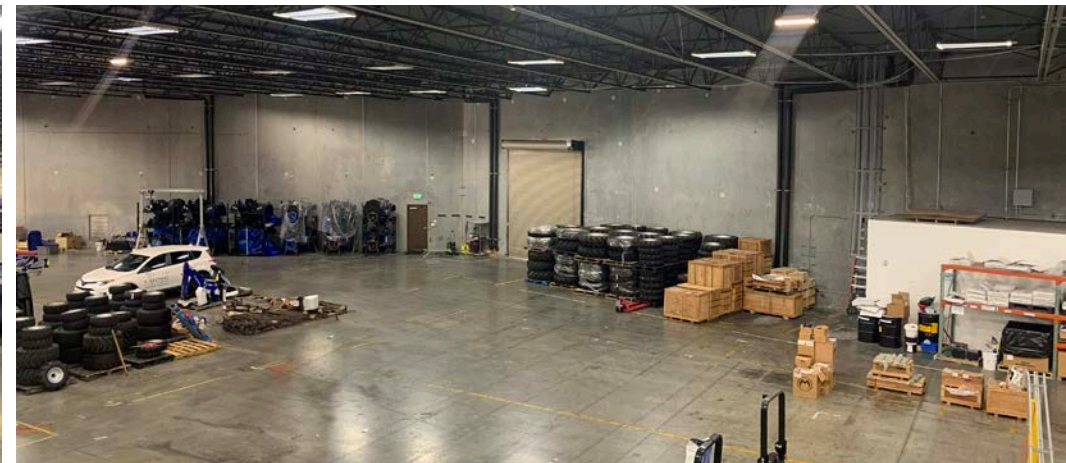
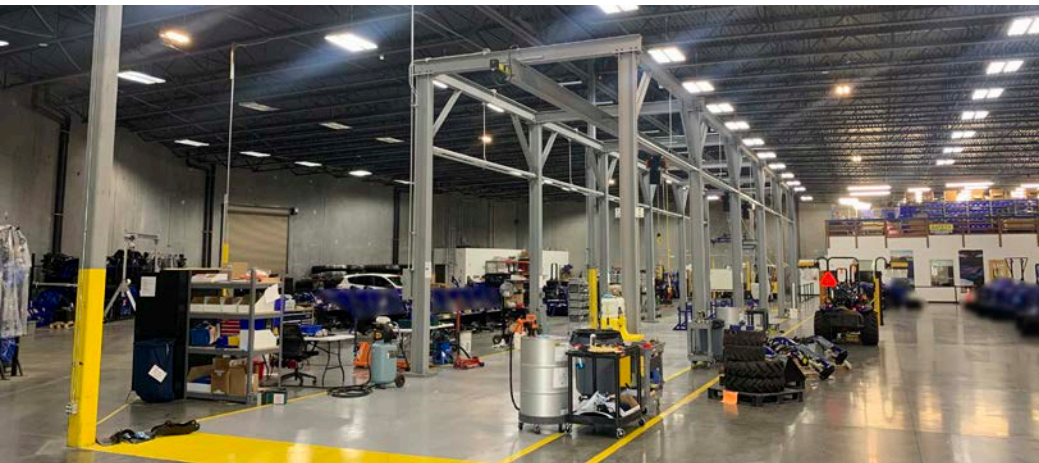


PROPERTY PHOTOS



5600 EARHART COURT
WINDSOR, CA

**HIGH CUBE
INDUSTRIAL BUILDING**



PRESENTED BY:

**KEVIN DORAN, PARTNER
KEEGAN & COPPIN CO., INC.
LIC # 01704987 (707) 528-1400, EXT. 270
KDORAN@KEEGANCOPPIN.COM**

**BRIAN KEEGAN, PARTNER
KEEGAN & COPPIN CO., INC.
LIC # 01809537 (707) 528-1400, EXT. 249
BKEEGAN@KEEGANCOPPIN.COM**

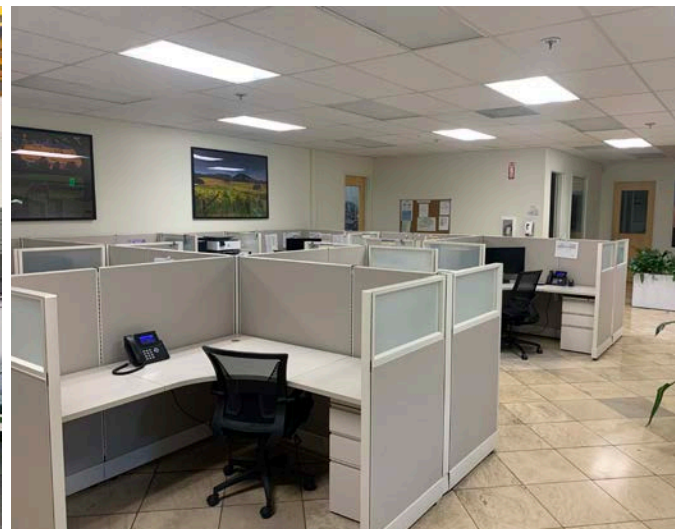
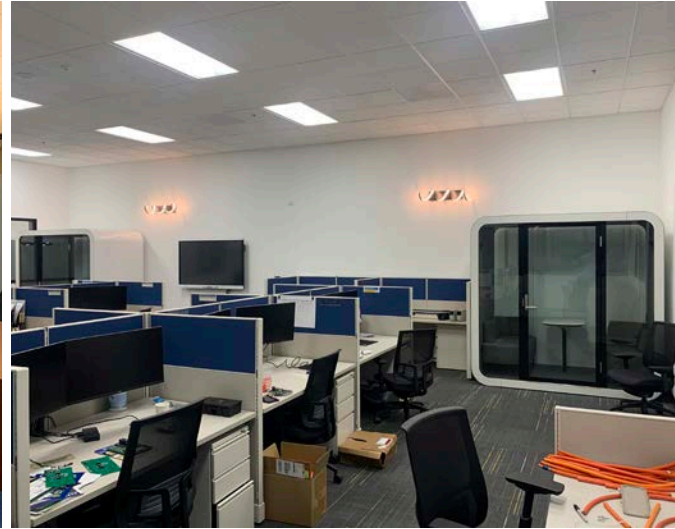


PROPERTY PHOTOS



5600 EARHART COURT
WINDSOR, CA

**HIGH CUBE
INDUSTRIAL BUILDING**



PRESENTED BY:

KEVIN DORAN, PARTNER
KEEGAN & COPPIN CO., INC.
LIC # 01704987 (707) 528-1400, EXT. 270
KDORAN@KEEGANCOPPIN.COM

BRIAN KEEGAN, PARTNER
KEEGAN & COPPIN CO., INC.
LIC # 01809537 (707) 528-1400, EXT. 249
BKEEGAN@KEEGANCOPPIN.COM



PROPERTY PHOTOS



5600 EARHART COURT
WINDSOR, CA

**HIGH CUBE
INDUSTRIAL BUILDING**



PRESENTED BY:

KEVIN DORAN, PARTNER
KEEGAN & COPPIN CO., INC.
LIC # 01704987 (707) 528-1400, EXT. 270
KDORAN@KEEGANCOPPIN.COM

BRIAN KEEGAN, PARTNER
KEEGAN & COPPIN CO., INC.
LIC # 01809537 (707) 528-1400, EXT. 249
BKEEGAN@KEEGANCOPPIN.COM



AERIAL MAP



5600 EARHART COURT
WINDSOR, CA

HIGH CUBE
INDUSTRIAL BUILDING



PRESENTED BY:

KEVIN DORAN, PARTNER
KEEGAN & COPPIN CO., INC.
LIC # 01704987 (707) 528-1400, EXT. 270
KDORAN@KEEGANCOPPIN.COM

BRIAN KEEGAN, PARTNER
KEEGAN & COPPIN CO., INC.
LIC # 01809537 (707) 528-1400, EXT. 249
BKEEGAN@KEEGANCOPPIN.COM