



For Lease

Office / Warehouse

Lease Rate

\$1.25 PSF NNN

Contact:

Dan Donaldson

Executive Vice President
+1 801 836 3600
dan.donaldson@colliers.com

Colliers

2100 Pleasant Grove Blvd., Suite 200
Pleasant Grove, UT 84062
Main: +1 801 947 8300
colliers.com

1020 South 250 East Provo, Utah

Building Amenities

- Total Available: 10,253 SF
 - Suite A: 5,497 SF
 - Suite B: 4,756 SF
- Power: 208 V, 3-phase, 2x400 AMP
- (2) Two dock high doors
- (3) Three grade level doors
- Clear Height: 20'
- Warehouse racking available
- Centrally located in Provo's East Bay area
- Convenient access to I-15's University Avenue freeway interchange

Available: 4,756 SF, 5,497 SF or 10,253 SF

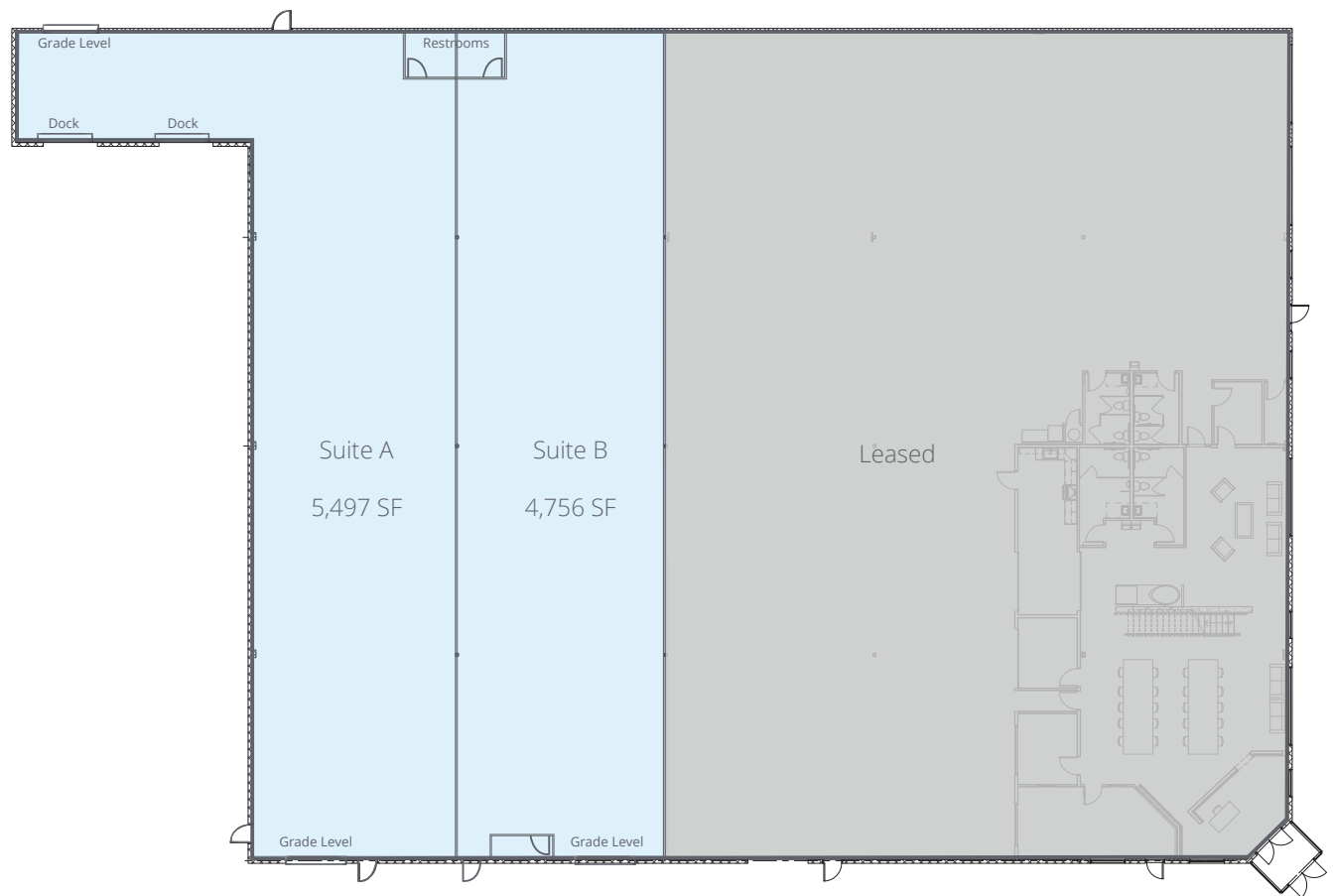
Lease Rate: \$1.25 PSF | NNN

Floor Plans

Total Available: 10,253 SF

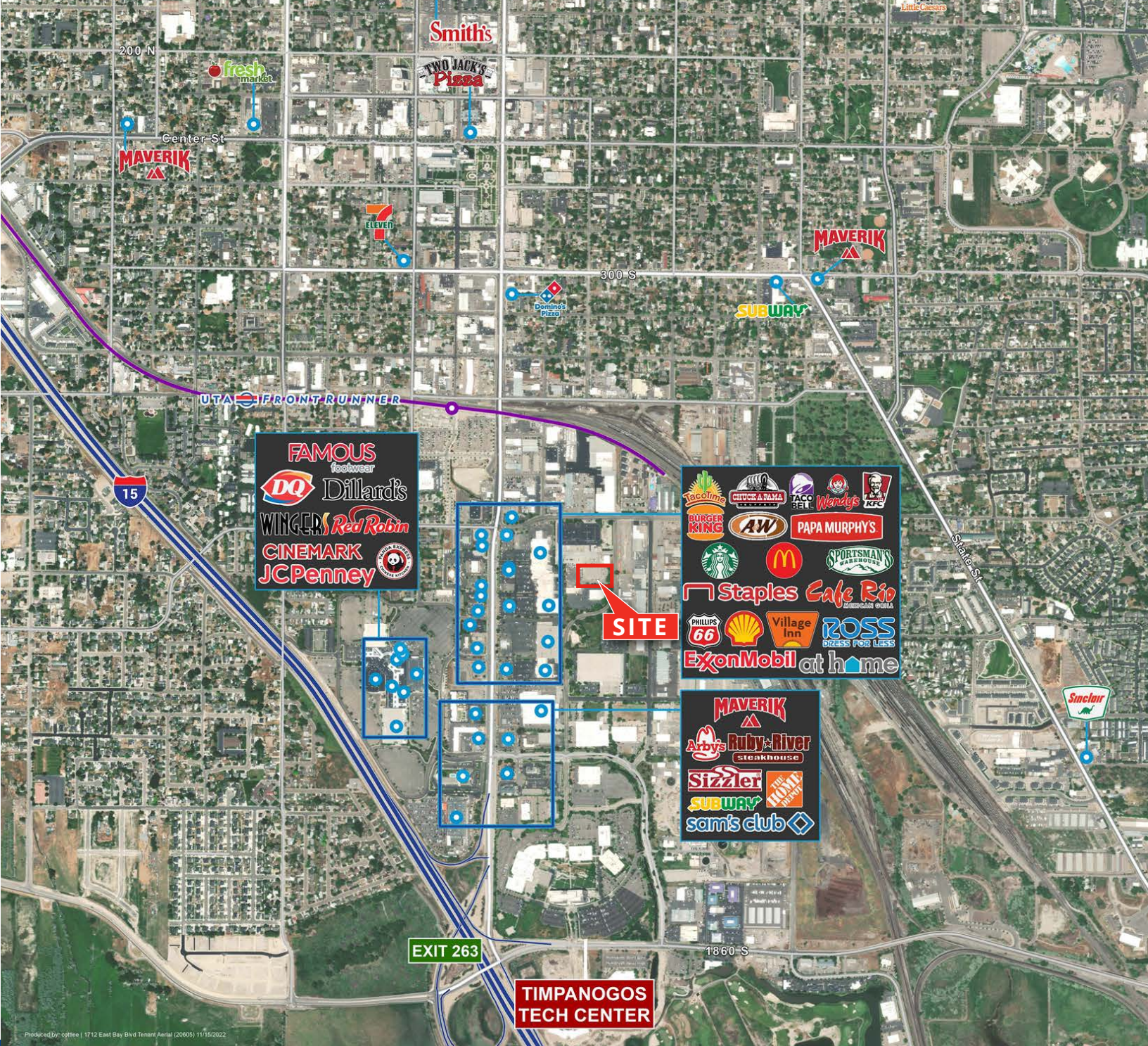
Two Warehouse Suites Available

- Suite A: 5,497 SF
- Suite B: 4,756 SF



Pictures





Colliers

2100 Pleasant Grove Blvd., Suite 200
Pleasant Grove, UT 84062
Main: +1 801 947 8300
colliers.com

Dan Donaldson

Executive Vice President
+1 801 836 3600
dan.donaldson@colliers.com

This document has been prepared by Colliers International for advertising and general information only. Colliers International makes no guarantees, representations or warranties of any kind, expressed or implied, regarding the information including, but not limited to, warranties of content, accuracy and reliability. Any interested party should undertake their own inquiries as to the accuracy of the information. Colliers International excludes unequivocally all inferred or implied terms, conditions and warranties arising out of this document and excludes all liability for loss and damages arising there from. This publication is the copyrighted property of Colliers International and/or its licensor(s). ©2025. All rights reserved.