



± 859 - 5,011 SF of Medical Office Suites for Lease in Orange

- Beautiful exterior renovation completed in 2021
- Within Walking Distance to St. Joseph Hospital and CHOC in Orange County
- Free on-site parking
- On-site engineers
- Excellent Access to the 22, 55, 57, and 5 Freeways

Spaces Available

Suite	Floor	Size (SF)
Suite 102	1st Floor	± 954 SF*
Suite 103	1st Floor	± 859 SF*
Suite 207	2nd Floor	± 2,300 SF**
Suite 209	2nd Floor	± 898 SF**

*can be combined for ± 1,813 SF

**can be combined for ± 3,178 SF

© 2022 Avison Young - Southern California, Ltd. All rights reserved. mance of the property. You and your tax and legal advisors should conduct your own investigation of the property and transaction.

For leasing information contact:

Eileen Doody

Principal, Healthcare, Leasing and Brokerage

eileen.doody@avisonyoung.com

D: 949.390.5506

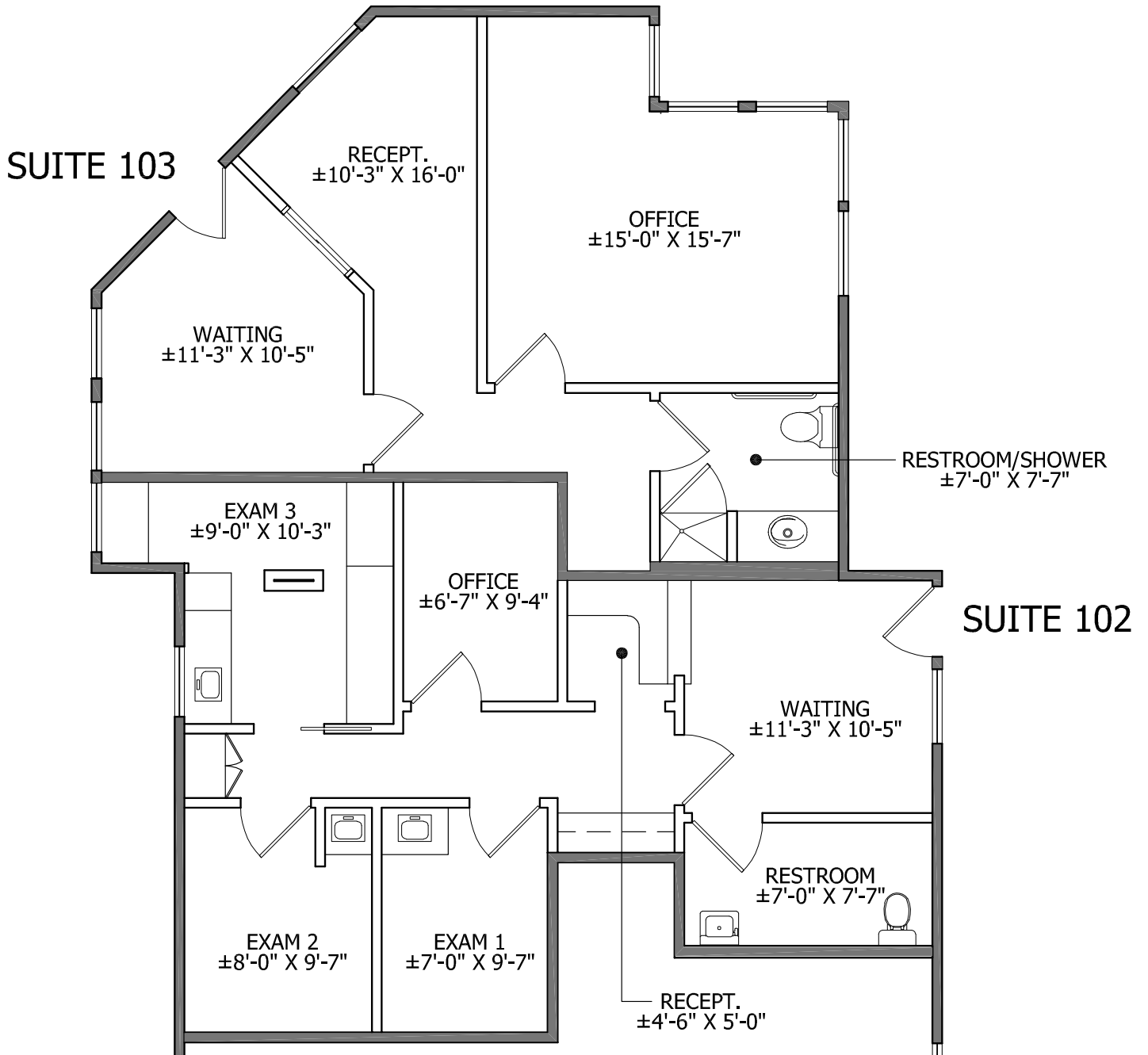
CA DRE Lic. #00965140

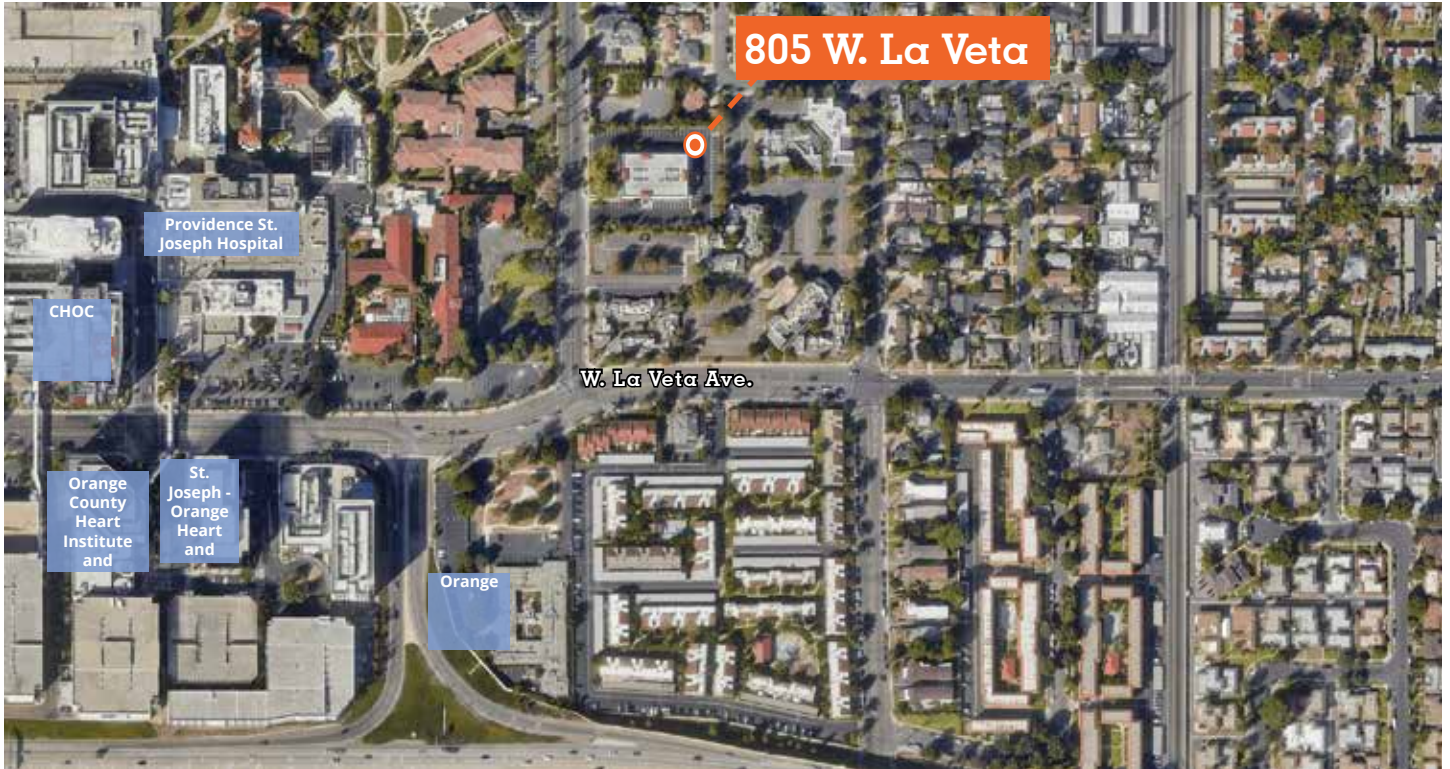
1 Park Plaza, Suite 100
Irvine, CA 92614
avisonyoung.com

Suites 102 | ± 954 SF

Suites 103 | ± 859 SF

Suites 102 - 103 | ± 1,813 SF SF





Suites 207 - 209 | ± 3,178 SF

