



PROPERTY DESCRIPTION

Experience the epitome of modern convenience at this premier property. Boasting a prime location on McFarland Blvd in Northport, AL, this versatile space offers unparalleled visibility and accessibility. The property features contemporary architecture, ample parking, and customizable floor plans to suit diverse business needs. Tenants can enjoy the convenience of nearby amenities and a professional setting that exudes prestige. With its high-traffic location and seamless connectivity, the property presents an unparalleled opportunity for businesses looking to make a statement and thrive in a dynamic commercial environment. Elevate your business presence at this exceptional property.

OFFERING SUMMARY

Lease Rate:	\$13.00 - 14.00 SF/yr (NNN)
Available SF:	1,600 - 10,000 SF
Lot Size:	140,782 SF
Building Size:	27,684 SF

DEMOGRAPHICS	1 MILE	5 MILES	10 MILES
Total Households	2,243	39,272	74,305
Total Population	5,310	82,872	165,067
Average HH Income	\$61,975	\$51,187	\$57,238

CASE MCNEILL **RICHARD HENRY**

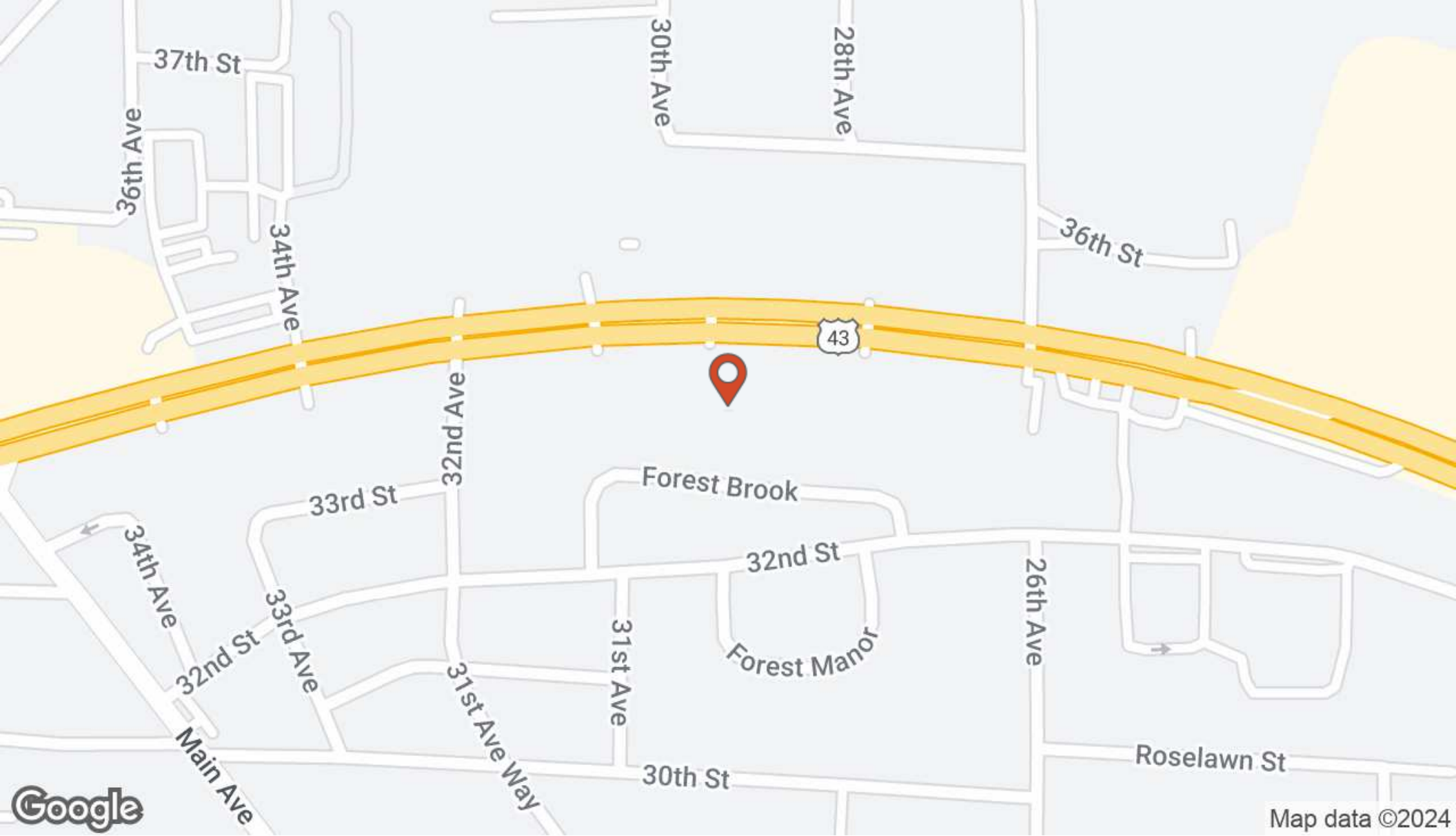
205.292.4643
case@rightspacecre.com

205.799.8110
richard@rightspacecre.com

RETAIL PROPERTY FOR LEASE

BUFORD PLAZA

3067 MCFARLAND BLVD, NORTHPORT, AL 35476



CASE MCNEILL **RICHARD HENRY**

205.292.4643
case@rightspacecre.com

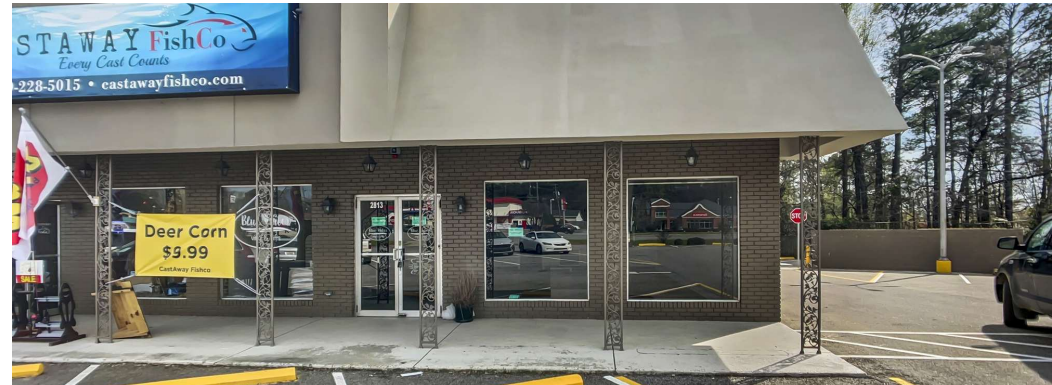
205.799.8110
richard@rightspacecre.com



RETAIL PROPERTY FOR LEASE

BUFORD PLAZA

3067 MCFARLAND BLVD, NORTHPORT, AL 35476



CASE MCNEILL **RICHARD HENRY**

205.292.4643
case@rightspacecre.com

205.799.8110
richard@rightspacecre.com

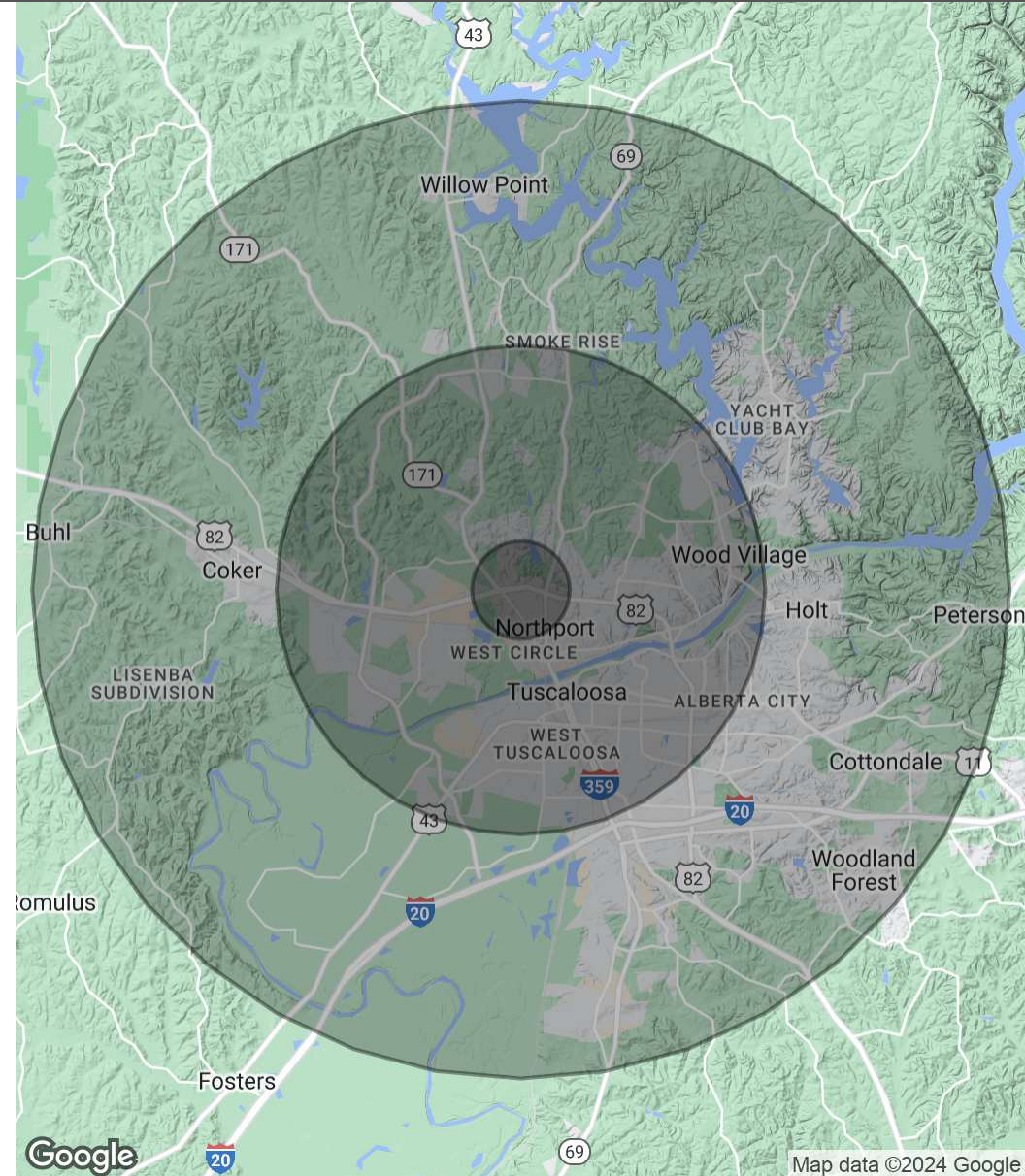
RS
RIGHT SPACE
rightspacecre.com

BUFORD PLAZA

3067 MCFARLAND BLVD, NORTHPORT, AL 35476

POPULATION	1 MILE	5 MILES	10 MILES
Total Population	5,310	82,872	165,067
Average Age	42.3	32.8	34.5
Average Age (Male)	35.3	30.2	32.9
Average Age (Female)	49.2	34.9	36.3
HOUSEHOLDS & INCOME	1 MILE	5 MILES	10 MILES
Total Households	2,243	39,272	74,305
# of Persons per HH	2.4	2.1	2.2
Average HH Income	\$61,975	\$51,187	\$57,238
Average House Value	\$177,837	\$184,752	\$187,660

2020 American Community Survey (ACS)



CASE MCNEILL **RICHARD HENRY**

205.292.4643
case@rightspacecre.com

205.799.8110
richard@rightspacecre.com