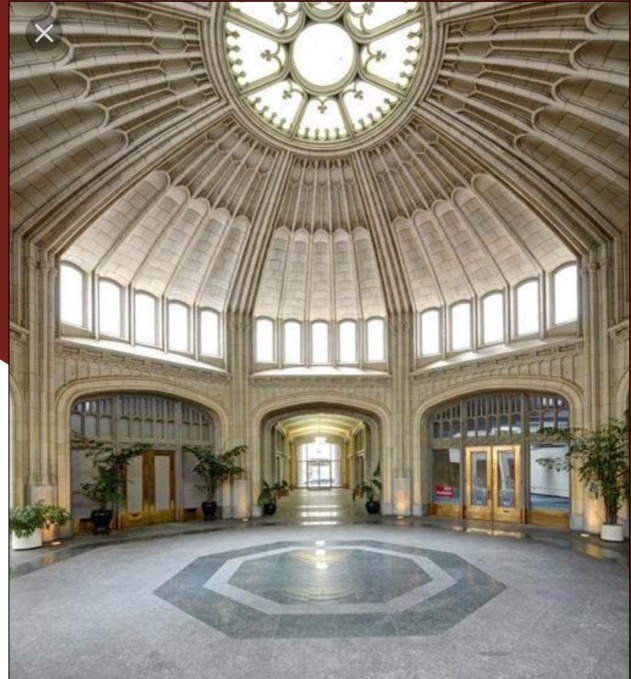




HEALEY BUILDING

# Downtown Retail & Restaurant Spaces For Lease HISTORIC HEALEY BUILDING

Bounded by Broad Street, Walton Street, Forsyth Street & Poplar Street



## Healey Building

57 Forsyth St NW, Entire Block, Forsyth, Walton, Broad & Poplar Streets)  
Atlanta, GA 30303

**SIZES:** 655 RSF Up To 9,132 RSF

**RATE:** Varies

- Street Level Exposure and Access with High Foot Traffic
- Adjacent to , GSU Aderhold Learning Center, Rialto Theatre & the GSU School of Music
- Building on the National Register of Historic Places
- Fantastic Walk in Ready Spaces
- A True Live / Work / Play Experience in Downtown Atlanta
- Nearby all of Downtown Atlanta's Major Tourist Attractions and Hotels
- Property is Located in the Federal Opportunity Zone. For More Information Go to <https://www.dca.ga.gov/community-economic-development/incentive-programs/federal-opportunity-zones>



Dave Smith

404.869.2605

dave@joelandgranot.com

For complete details, please visit: [www.joelandgranot.com](http://www.joelandgranot.com)



**JOEL & GRANOT**

COMMERCIAL REAL ESTATE

633 Antone St NW, Atlanta, GA 30318  
(ph) 404.869.2600 | (fax) 404.869.2601

The information was obtained from sources we assume are reliable. We

do not doubt its accuracy, however we



HEALEY BUILDING

# Healey Building Retail Floor Plan

Walton Street



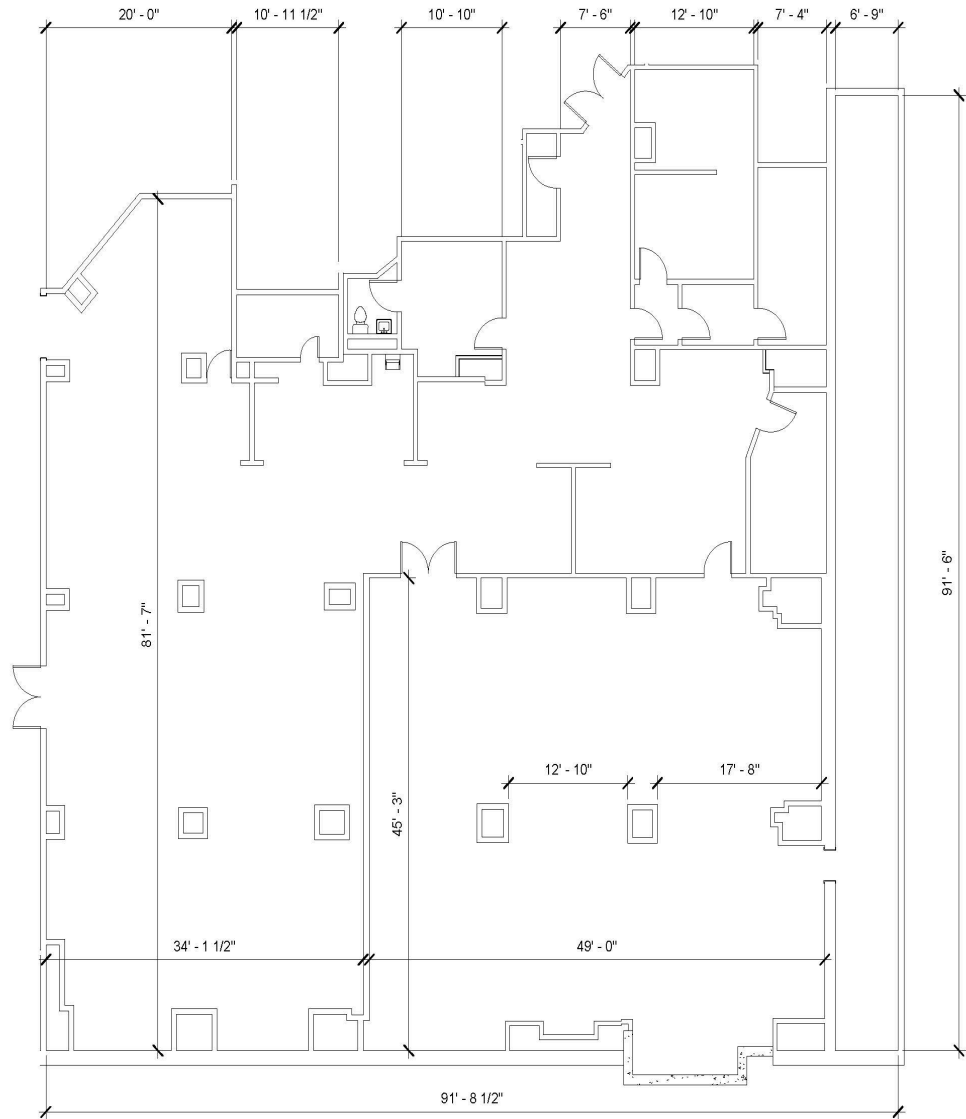
633 Antone St NW, Atlanta, GA 30318  
(ph) 404.869.2600 | (fax) 404.869.2601

The information was obtained from sources we assume are reliable. We do not doubt its accuracy, however we do not guarantee it. No liability is assumed for errors and omissions. Information is subject to changes and withdrawal without notice.



HEALEY BUILDING

# Healey Building Retail Floor Plan Suite M2 - 9,132 SF



633 Antone St NW, Atlanta, GA 30318  
(ph) 404.869.2600 | (fax) 404.869.2601

The information was obtained from sources we assume are reliable. We do not doubt its accuracy, however we do not guarantee it. No liability is assumed for errors and omissions. Information is subject to changes and withdrawal without notice.





HEALEY BUILDING

# Healey Building Retail / Restaurant Photos



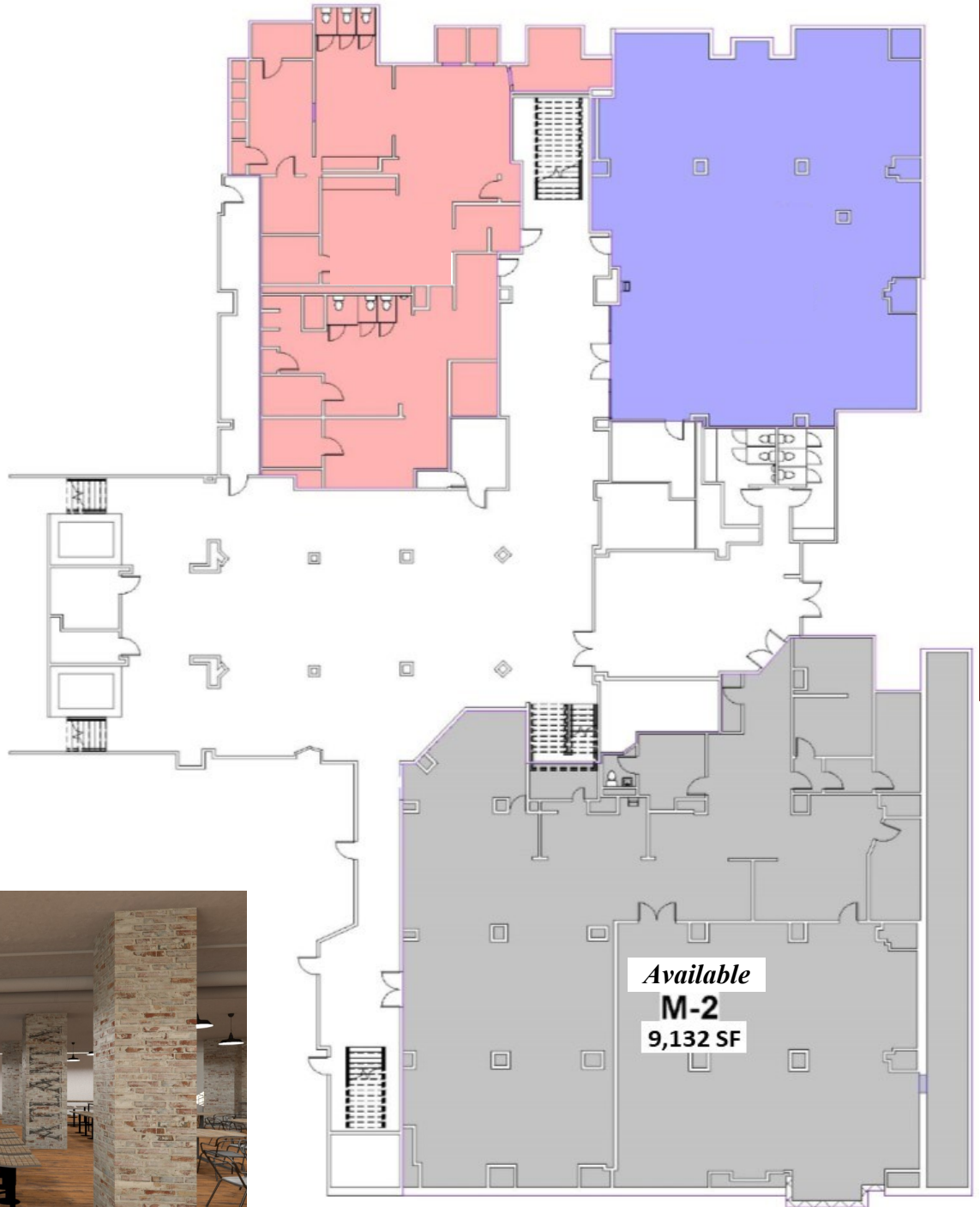
633 Antone St NW, Atlanta, GA 30318  
(ph) 404.869.2600 | (fax) 404.869.2601

The information was obtained from sources we assume are reliable. We do not doubt its accuracy, however we do not guarantee it. No liability is assumed for errors and omissions. Information is subject to changes and withdrawal without notice.

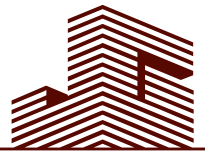


HEALEY BUILDING

# Healey Building Market Level Floor Plan 9,132 SF



For complete details, please visit: [www.joelandgranot.com](http://www.joelandgranot.com)



**JOEL & GRANOT**  
COMMERCIAL REAL ESTATE

633 Antone St NW, Atlanta, GA 30318  
(ph) 404.869.2600 | (fax) 404.869.2601

The information was obtained from sources we assume are reliable. We do not doubt its accuracy, however we do not guarantee it. No liability is assumed for errors and omissions. Information is subject to changes and withdrawal without notice.