

PROPERTY SUMMARY



OFFERING SUMMARY

LEASE RATE:	\$48.00 SF/yr (MG)
BUILDING SIZE:	2,986 SF
AVAILABLE SF:	1,320 SF
YEAR BUILT:	1900
ZONING:	NCT-Fillmore Street
MARKET:	Lower Pacific Heights
SUBMARKET:	Fillmore Street Shopping District

KEVIN D. CHIN, CCIM

O: 415.922.2900 x101

kevinc@svn.com

CalDRE #00696127

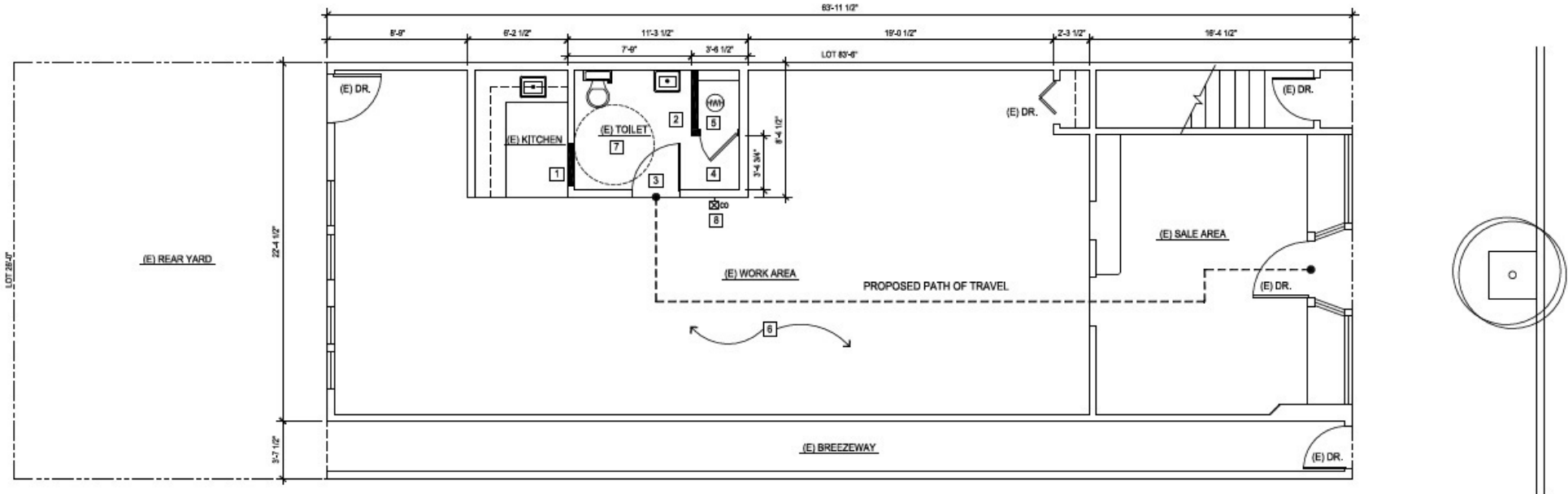
PROPERTY OVERVIEW

Ground floor retail/office space located in the historic Victorian Square. The space has high ceilings and has finished hardwood floors and seagrass rug. Use of rear yard included. Parking available.

PROPERTY HIGHLIGHTS

- Short walk to Fillmore Street shopping
- Around the corner from Japantown
- Victorian storefront
- Private parking available

FLOOR PLANS



GROUND FLOOR PLAN

SCALE: 1/4"=1'-0"



KEVIN D. CHIN, CCIM

O: 415.922.2900 x101

kevinc@svn.com

CalDRE #00696127

ADDITIONAL PHOTOS



KEVIN D. CHIN, CCIM
O: 415.922.2900 x101
kevinc@svn.com
CalDRE #00696127