

±6.88 ACRES

Fully Fenced & Secured

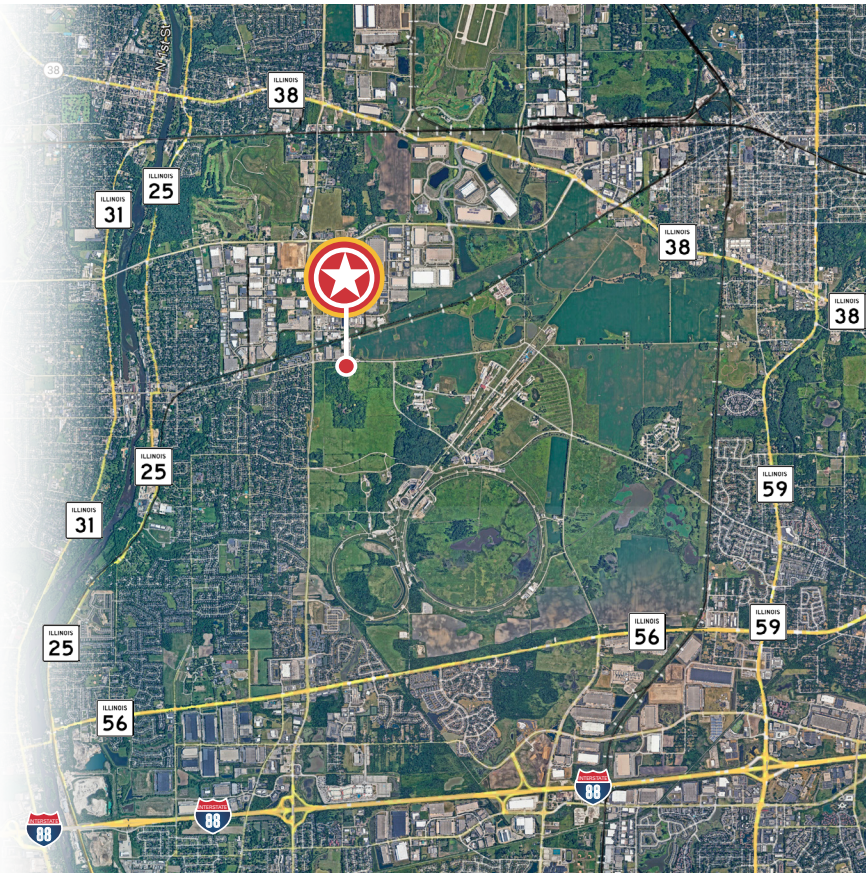
Available

1697 E Wilson Street

Batavia, Illinois 60510

#### PROPERTY HIGHLIGHTS

- ±6.88 acre site
- ±2,700 SF equipment storage building
- Ideal for logistics and outdoor storage users
- Gravel/compacted grindings
- Zoned Light Industrial
- Fully fenced and secured lot
- Proximity to I-88, Route 25, Route 59, Route 38



#### Contact

Kelly Disser

+1 630 317 0721

kdisser@hiffman.com

Michael J Freitag

+1 630 693 0652

mfreitag@hiffman.com

TJ Feeney

+1 630 693 0680

tfeeney@hiffman.com

**NAI Hiffman**  
Commercial Real Estate Services, Worldwide

One Oakbrook Terrace  
Suite 400

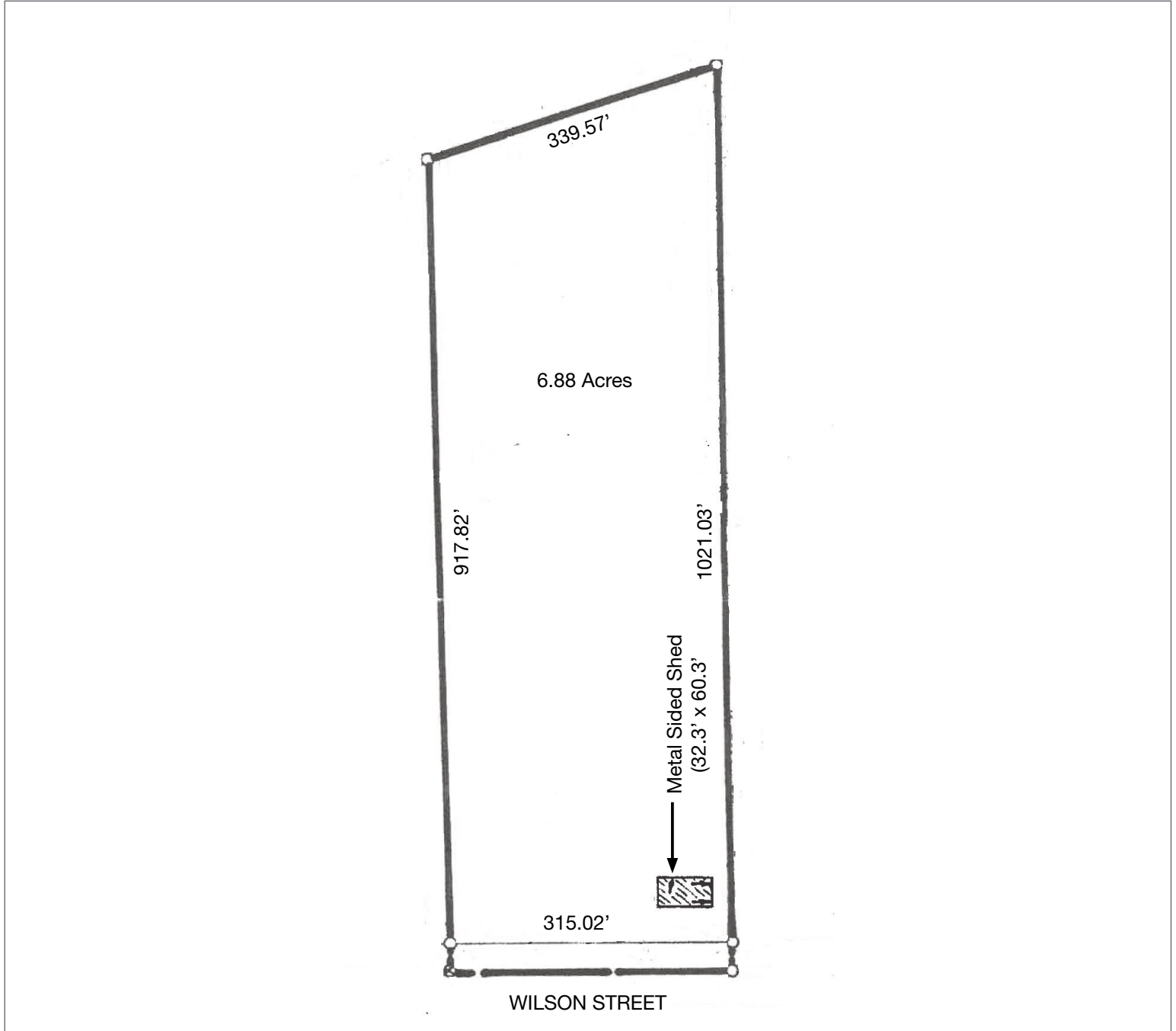
Oakbrook Terrace, Illinois 60181  
+1 630 932 1234

[hiffman.com](http://hiffman.com)

NO WARRANTY OR REPRESENTATION, EXPRESS OR IMPLIED, IS MADE AS TO THE ACCURACY OF THE INFORMATION CONTAINED HEREIN, AND THE SAME IS SUBMITTED SUBJECT TO ERRORS, OMISSIONS, CHANGE OF PRICE, RENTAL OR OTHER CONDITIONS, PRIOR SALE, LEASE OR FINANCING, OR WITHDRAWAL WITHOUT NOTICE, AND OF ANY SPECIAL LISTING CONDITIONS IMPOSED BY OUR PRINCIPALS. NO WARRANTIES OR REPRESENTATIONS ARE MADE AS TO THE CONDITION OF THE PROPERTY OR ANY HAZARDS CONTAINED THEREIN ARE ANY TO BE IMPLIED.



## Site Survey



## Contact

Kelly Disser

+1 630 317 0721

kdisser@hiffman.com

Michael J Freitag

+1 630 693 0652

mfreitag@hiffman.com

TJ Feeney

+1 630 693 0680

tfeeney@hiffman.com

**NAI Hiffman**  
 Commercial Real Estate Services, Worldwide

One Oakbrook Terrace

Suite 400

Oakbrook Terrace, Illinois 60181

+1 630 932 1234

hiffman.com

NO WARRANTY OR REPRESENTATION, EXPRESS OR IMPLIED, IS MADE AS TO THE ACCURACY OF THE INFORMATION CONTAINED HEREIN, AND THE SAME IS SUBMITTED SUBJECT TO ERRORS, OMISSIONS, CHANGE OF PRICE, RENTAL OR OTHER CONDITIONS, PRIOR SALE, LEASE OR FINANCING, OR WITHDRAWAL WITHOUT NOTICE, AND OF ANY SPECIAL LISTING CONDITIONS IMPOSED BY OUR PRINCIPALS NO WARRANTIES OR REPRESENTATIONS ARE MADE AS TO THE CONDITION OF THE PROPERTY OR ANY HAZARDS CONTAINED THEREIN ARE ANY TO BE IMPLIED.