

**10110
ROBERTS
WAY**

COVINGTON, GA
30014

5,600 +/- SF Office Building for Sublease

JASON MCCART, SIOR

Senior Vice President

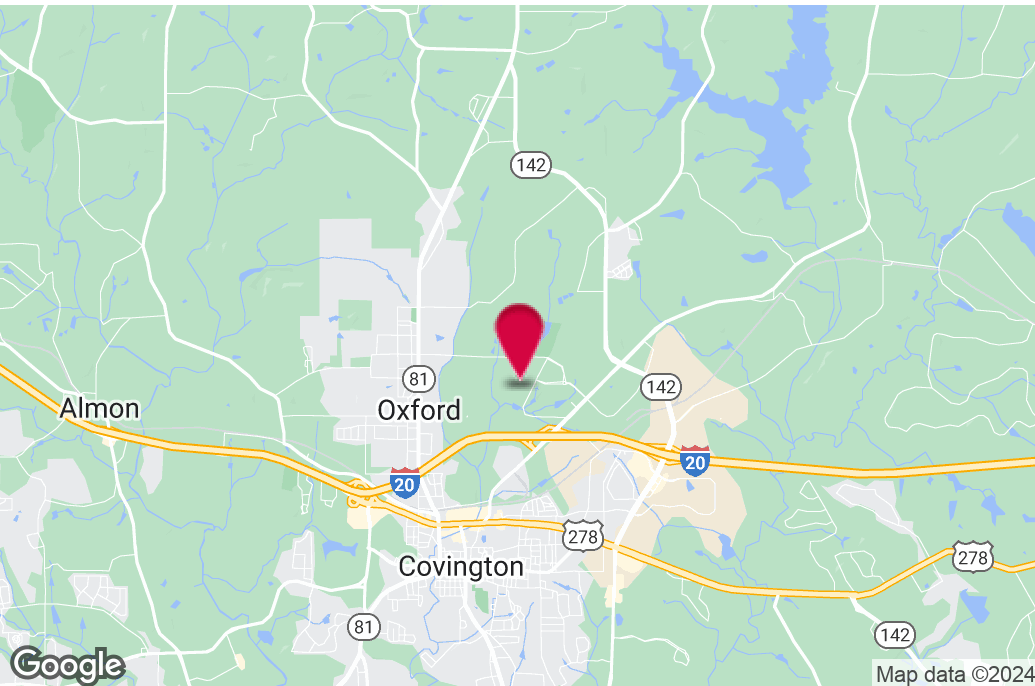
770.601.5451

jmccart@kingindustrial.com

King *Industrial
Realty, Inc.*

Industrial • Commercial • Investment
404.942.2000 | kingindustrial.com

FOR SUBLEASE 5,600 +/- SF OFFICE BUILDING



PROPERTY HIGHLIGHTS

- **Upstairs:**
 - 5 Private Offices w/Windows, Large Conference Room, Bull Pen, Kitchen, Large File Room (Office), Lobby, 2 Restrooms, Back Deck
- **Downstairs:**
 - 5 Private Offices, Restroom w/Shower, Bull Pen, Break Area, Separate Entrance, Separate Parking, Covered Patio
 - One Mile from Interstate 20
 - 2 Minutes from Covington Town Center
 - Short Distance to Grocery/Restaurants/Hotels/Banking

OFFERING SUMMARY

Building Size:	5,600 SF
Zoning:	I1

JASON MCCART, SIOR

Senior Vice President

770.601.5451

jmccart@kingindustrial.com

Every effort has been made to provide accurate information, but no liability is assumed for errors or omissions.



Industrial • Commercial • Investment
404.942.2000 | kingindustrial.com

ADDITIONAL PHOTOS



JASON MCCART, SIOR

Senior Vice President

770.601.5451

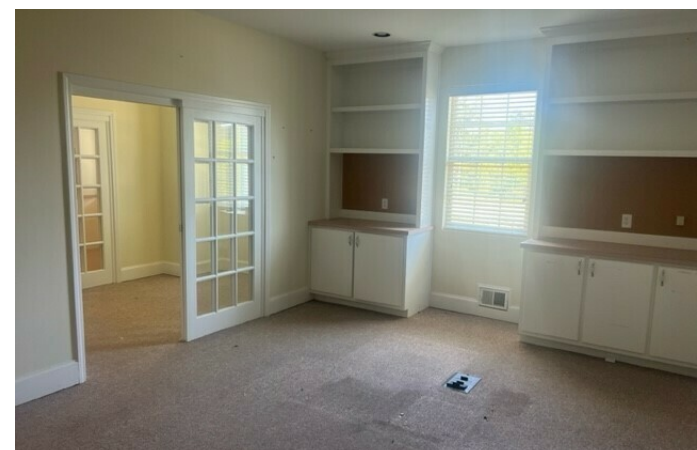
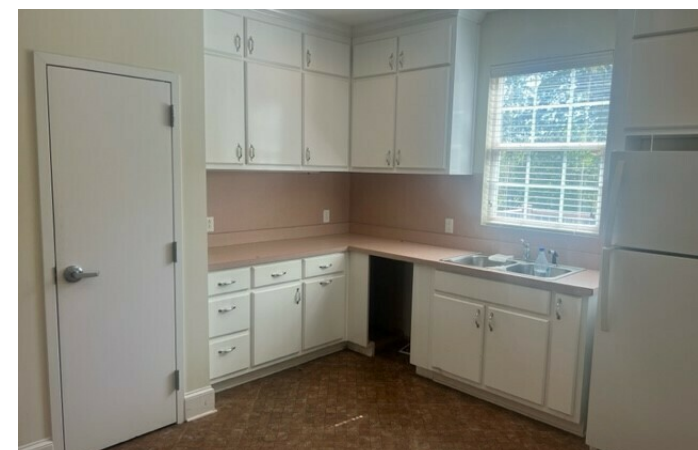
jmccart@kingindustrial.com

Every effort has been made to provide accurate information, but no liability is assumed for errors or omissions.

King Industrial
Realty, Inc. **CORFAC**
INTERNATIONAL

Industrial • Commercial • Investment
404.942.2000 | kingindustrial.com

ADDITIONAL PHOTOS



JASON MCCART, SIOR

Senior Vice President

770.601.5451

jmccart@kingindustrial.com

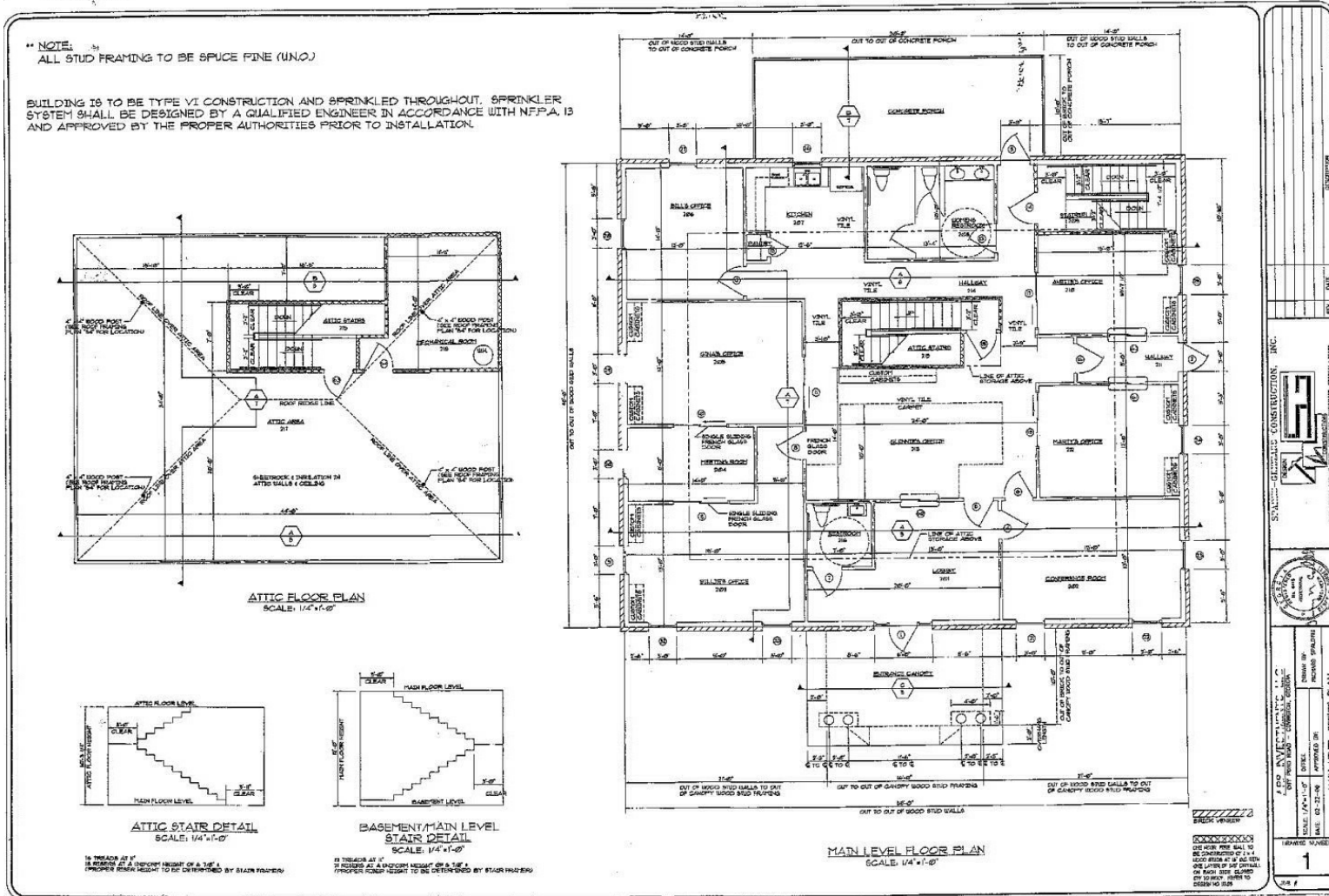
Every effort has been made to provide accurate information, but no liability is assumed for errors or omissions.

King Industrial
Realty, Inc.

CORFAC
INTERNATIONAL

Industrial • Commercial • Investment
404.942.2000 | kingindustrial.com

FLOOR PLAN MAIN LEVEL



JASON MCCART, SIOR

Senior Vice President

770.601.5451

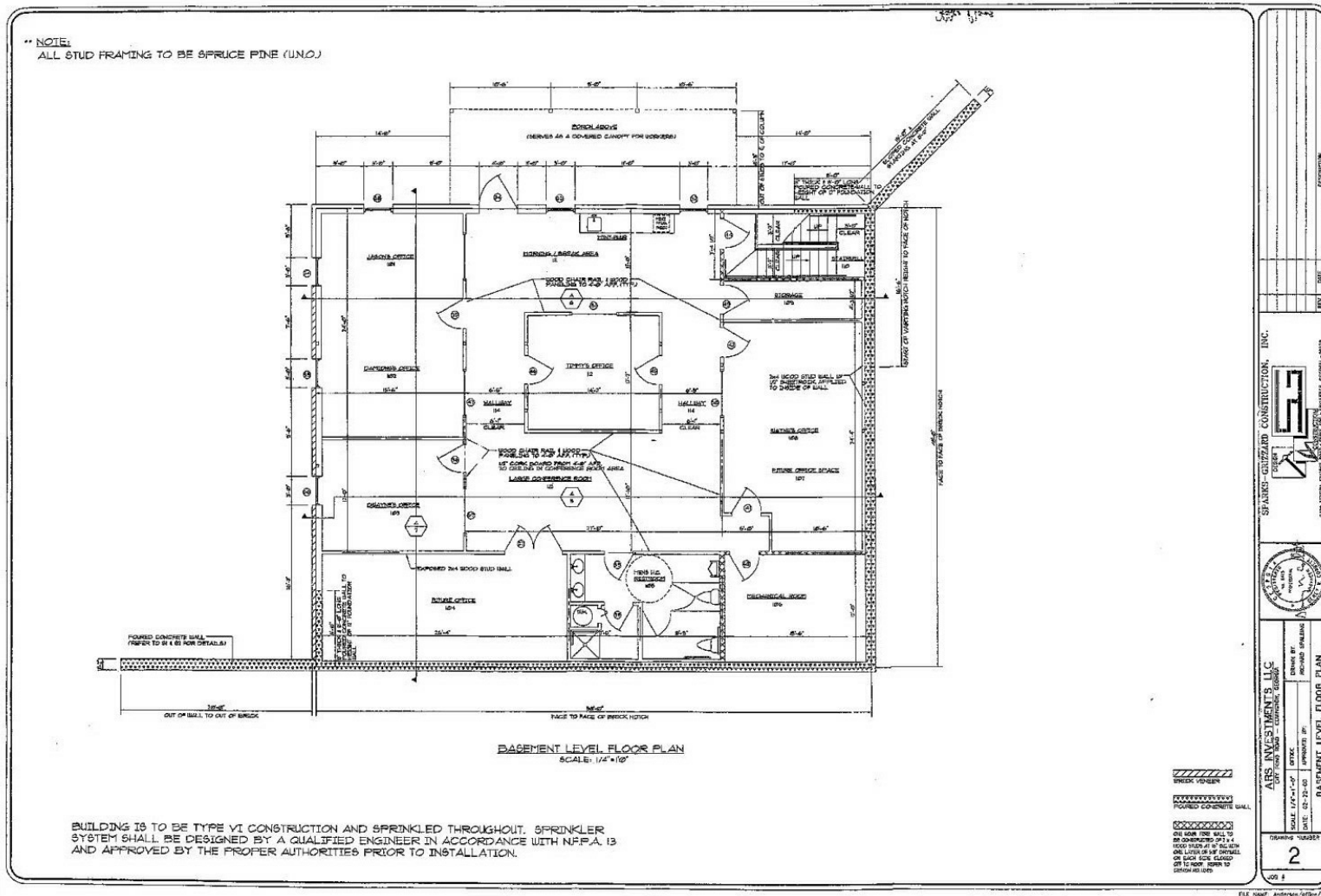
jmccart@kingindustrial.com

Every effort has been made to provide accurate information, but no liability is assumed for errors or omissions.

King Industrial Realty, Inc. **CORFAC** INTERNATIONAL

Industrial • Commercial • Investment
404.942.2000 | kingindustrial.com

FLOOR PLAN BASEMENT LEVEL



JASON MCCART, SIOR

Senior Vice President

770.601.5451

jmccart@kingindustrial.com

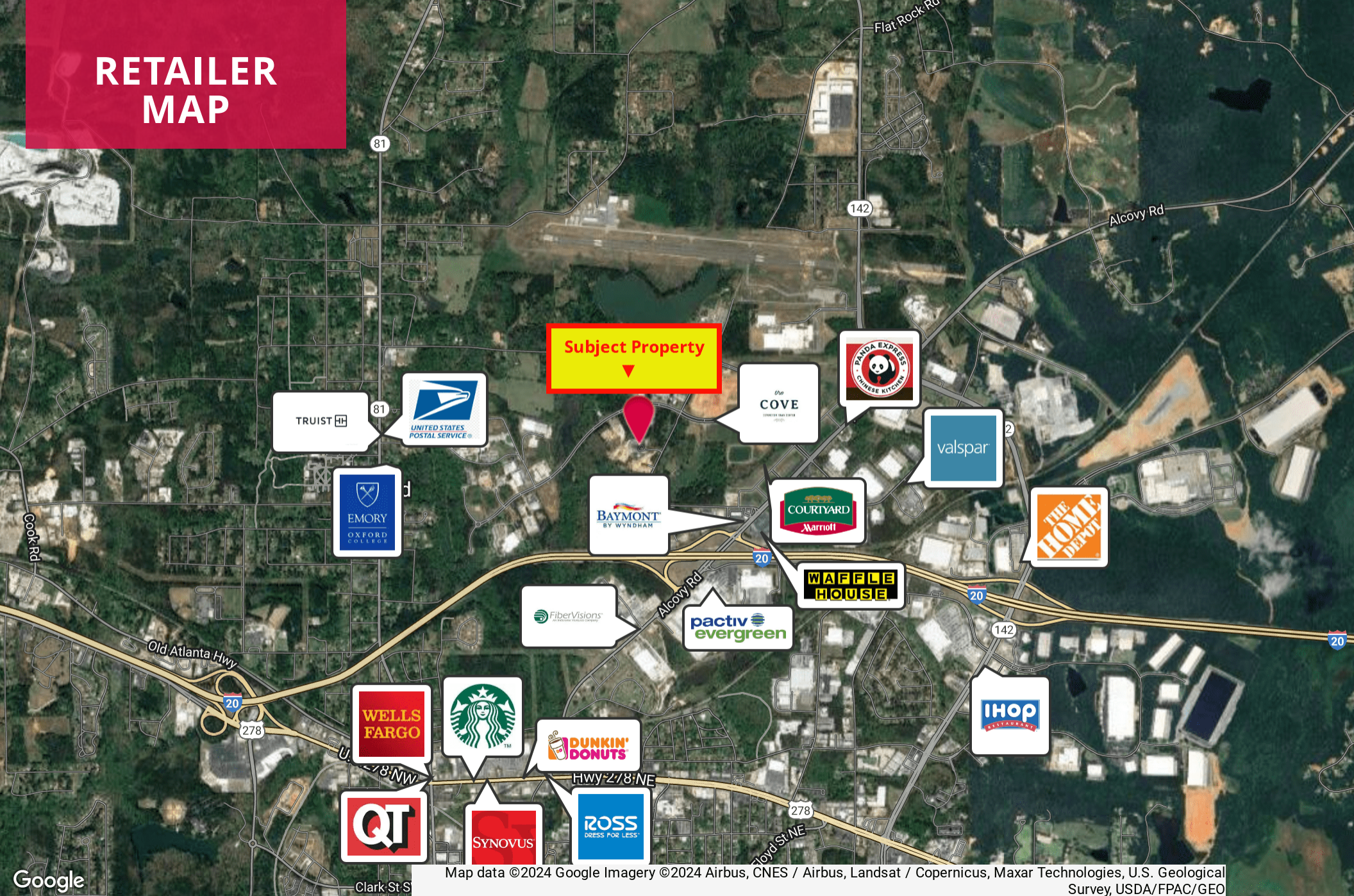
Every effort has been made to provide accurate information, but no liability is assumed for errors or omissions.

King Industrial
Realty, Inc.

CORFAC
INTERNATIONAL

Industrial • Commercial • Investment
404.942.2000 | kingindustrial.com

RETAILER MAP



Map data ©2024 Google Imagery ©2024 Airbus, CNES / Airbus, Landsat / Copernicus, Maxar Technologies, U.S. Geological Survey, USDA/FPAC/GEO

JASON MCCART, SIOR

Senior Vice President

770.601.5451

jmccart@kingindustrial.com

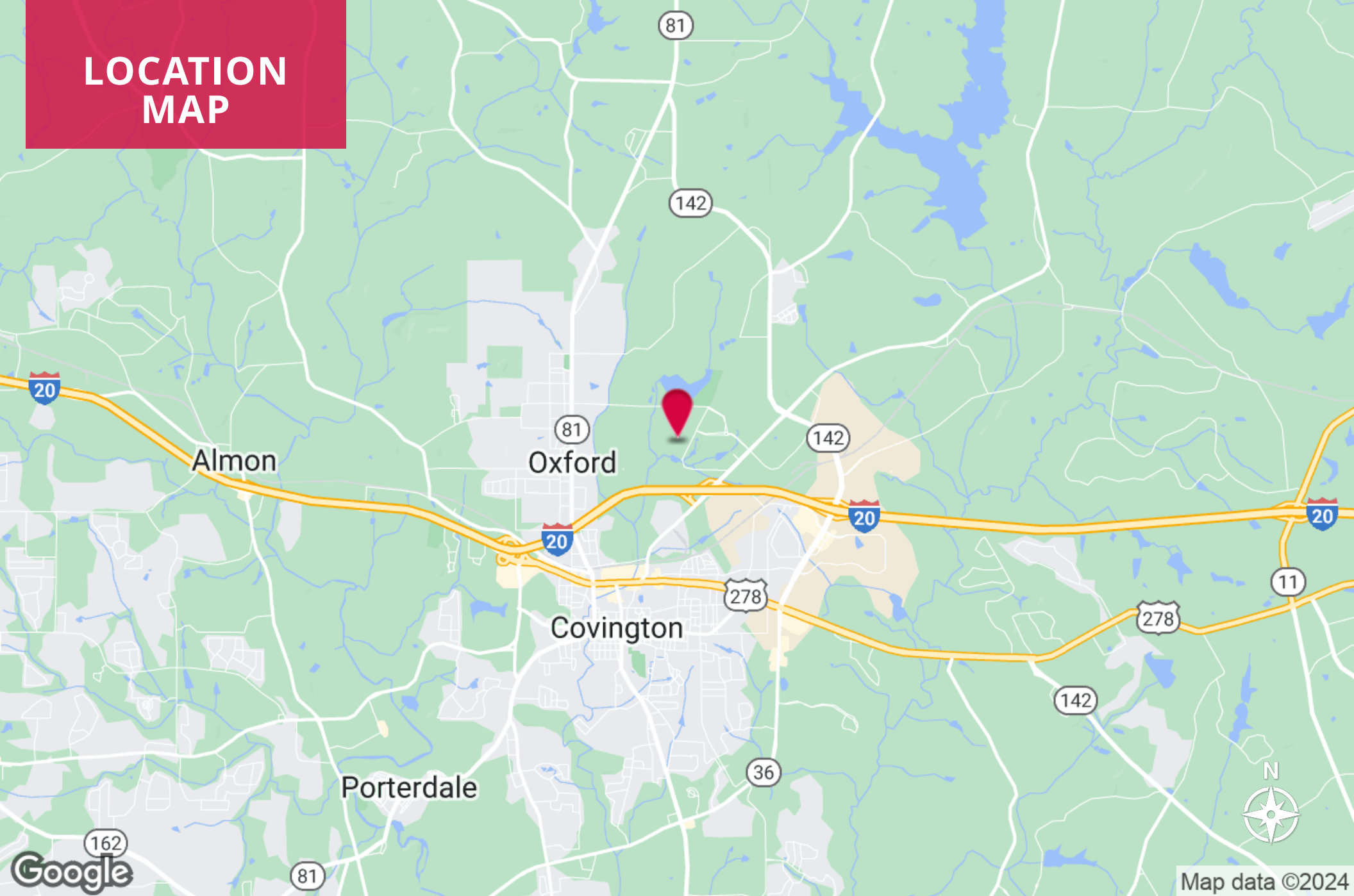
Every effort has been made to provide accurate information, but no liability is assumed for errors or omissions.

King Industrial Realty, Inc.

CORFAC INTERNATIONAL

Industrial • Commercial • Investment
404.942.2000 | kingindustrial.com

LOCATION MAP



JASON MCCART, SIOR

Senior Vice President

770.601.5451

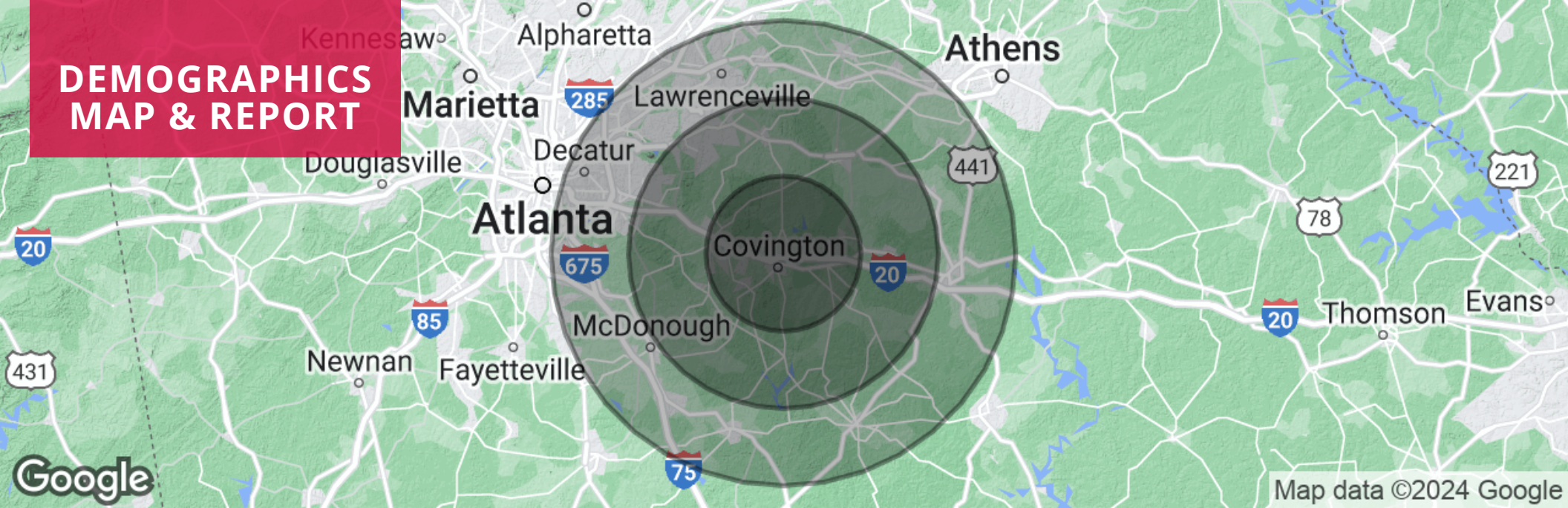
jmccart@kingindustrial.com

Every effort has been made to provide accurate information, but no liability is assumed for errors or omissions.

king Industrial
Realty, Inc. **CORFAC**
INTERNATIONAL

Industrial • Commercial • Investment
404.942.2000 | kingindustrial.com

DEMOGRAPHICS MAP & REPORT



POPULATION

	10 MILES	20 MILES	30 MILES
Total Population	147,352	609,943	2,039,920
Average Age	37.2	37.6	36.9
Average Age (Male)	35.5	35.6	35.3
Average Age (Female)	38.7	39.0	38.1

HOUSEHOLDS & INCOME

	10 MILES	20 MILES	30 MILES
Total Households	54,187	218,930	748,048
# of Persons per HH	2.7	2.8	2.7
Average HH Income	\$70,292	\$76,600	\$77,388
Average House Value	\$165,039	\$184,674	\$196,986

JASON MCCART, SIOR

Senior Vice President

770.601.5451

jmccart@kingindustrial.com

Every effort has been made to provide accurate information, but no liability is assumed for errors or omissions.



Industrial • Commercial • Investment
404.942.2000 | kingindustrial.com



EXCLUSIVELY LISTED BY:

JASON MCCART, SIOR

Senior Vice President
jmccart@kingindustrial.com
770.601.5451

King *Industrial
Realty, Inc.*

Industrial • Commercial • Investment
404.942.2000 | kingindustrial.com