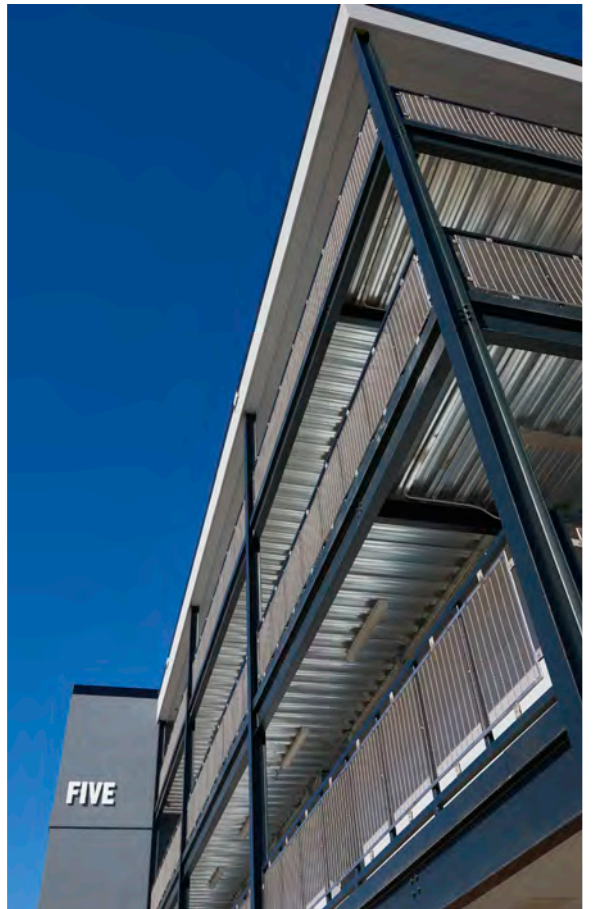


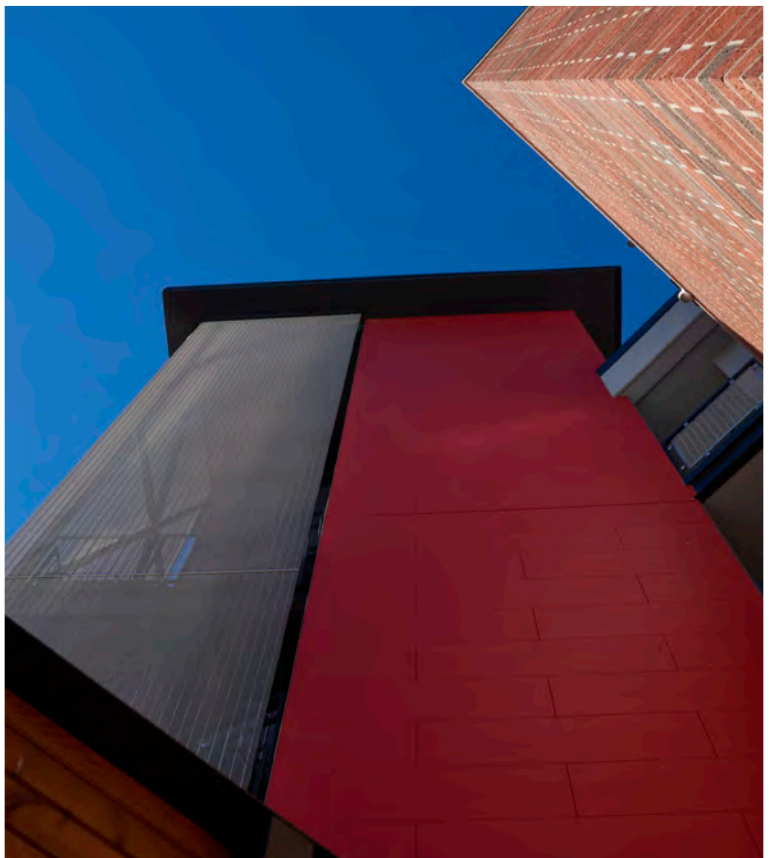
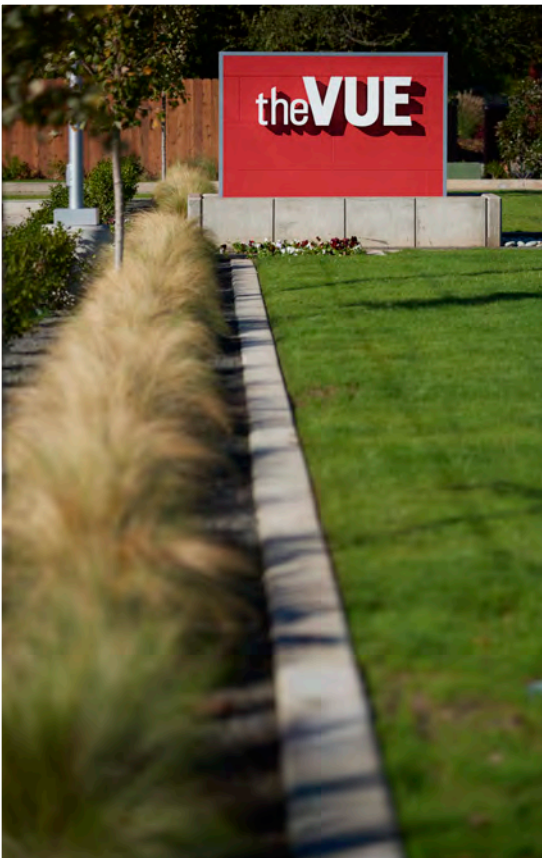
the **VUE**

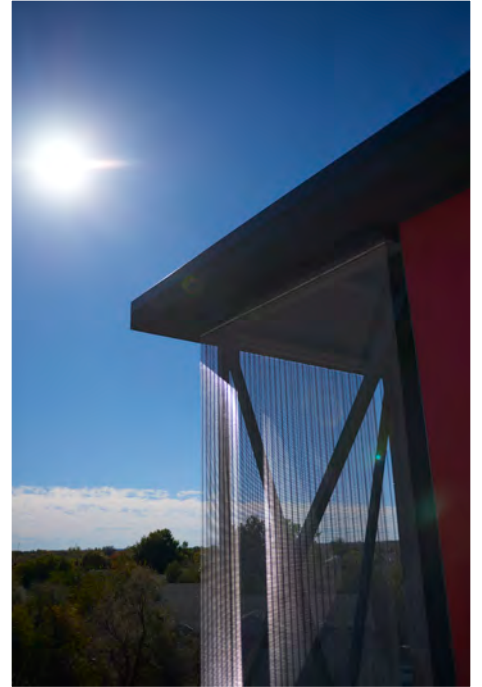
Next Level Living

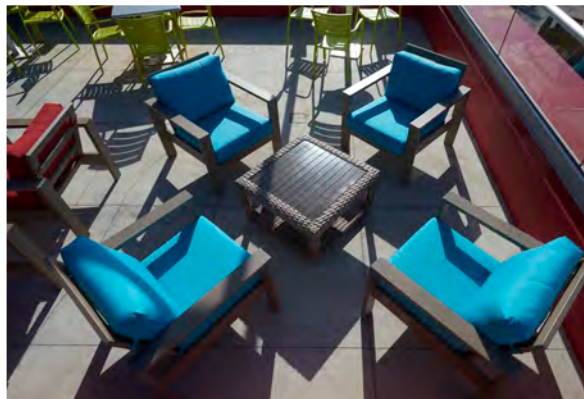
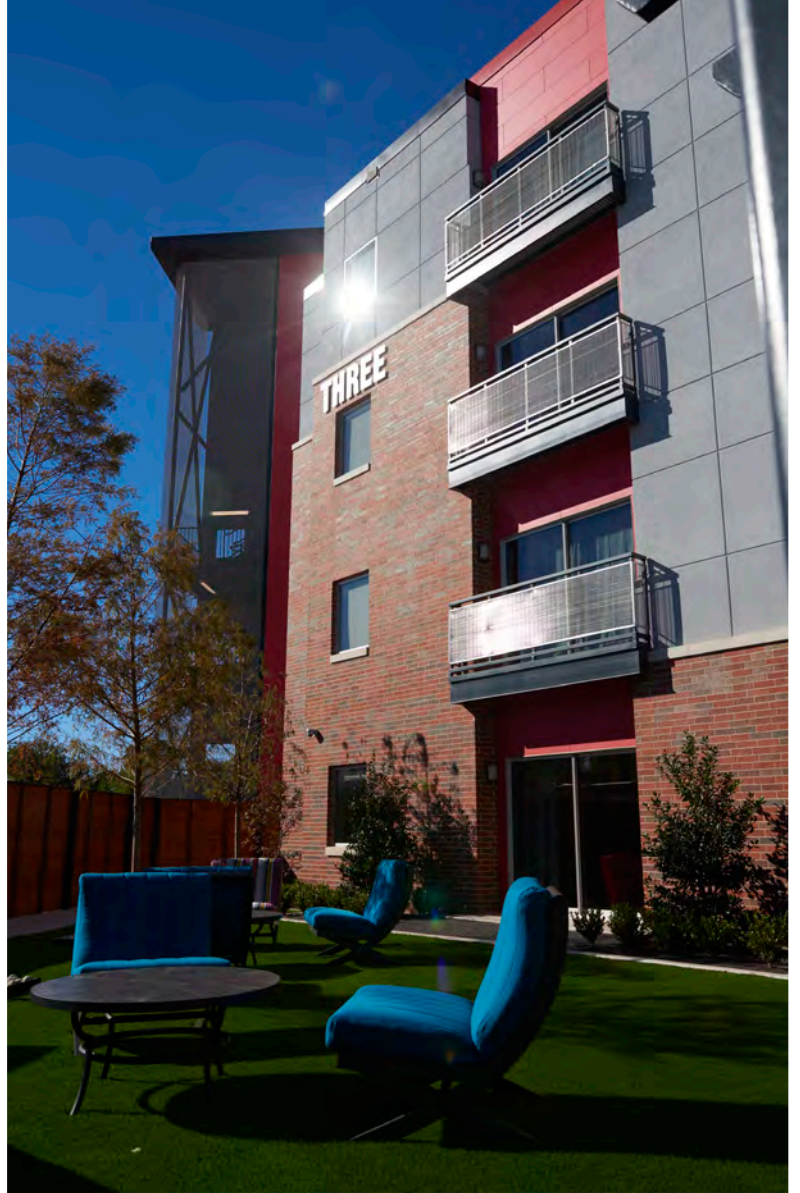
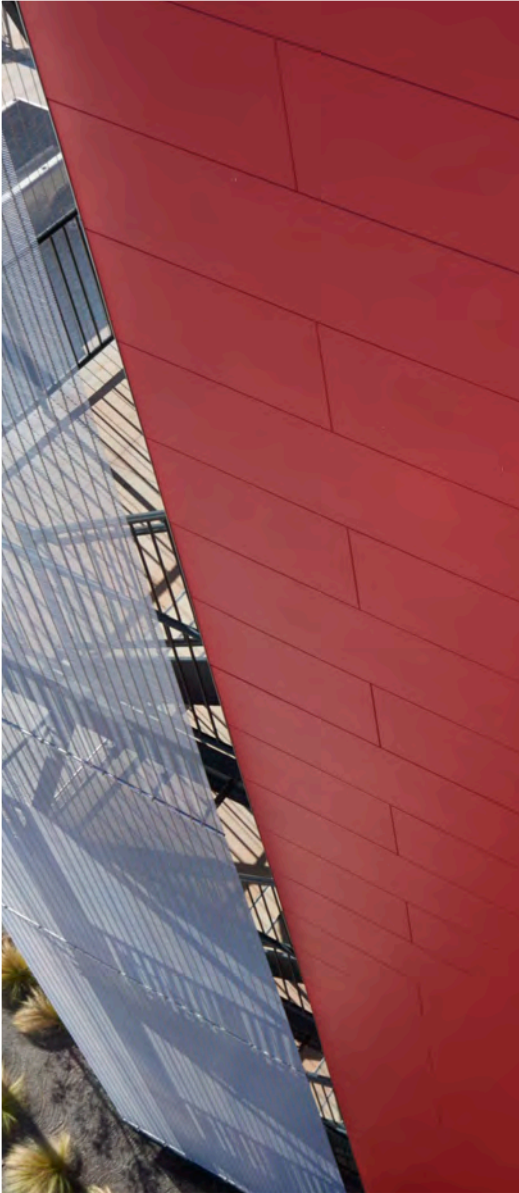


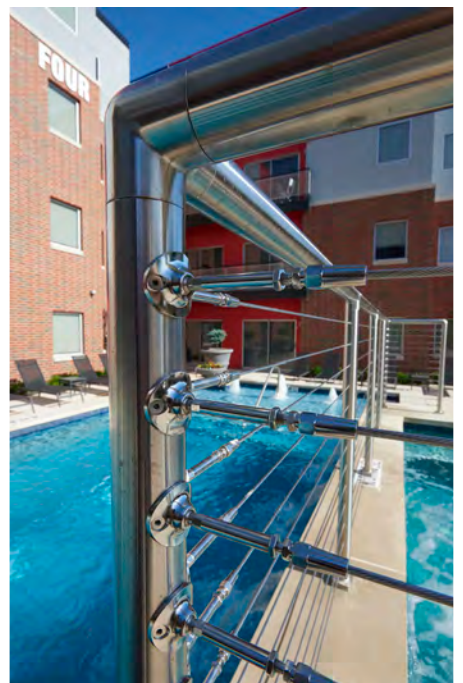
An upscale contemporary student housing concept located at the intersection of Imhoff and Chautauqua in Norman, Oklahoma.



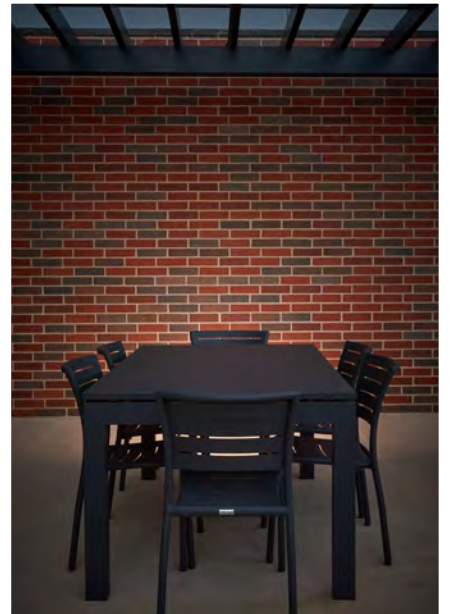




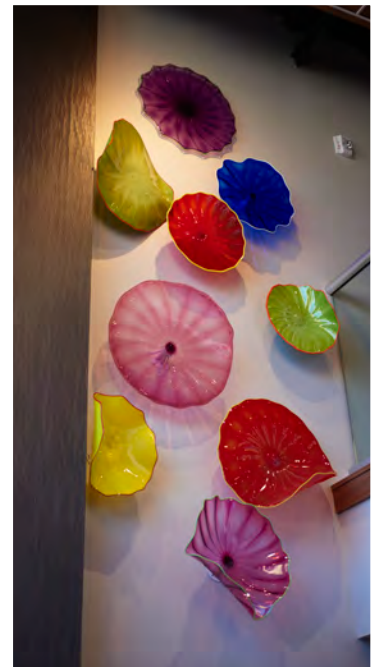






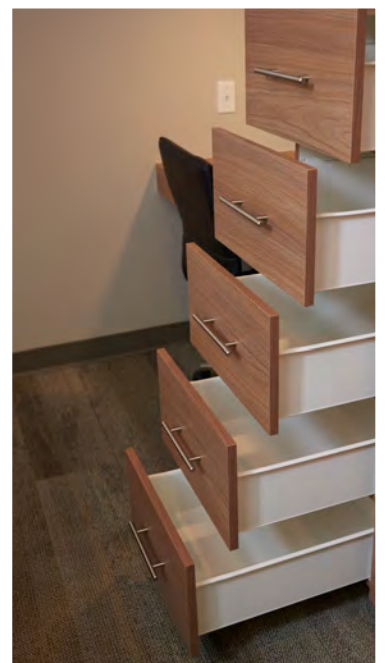








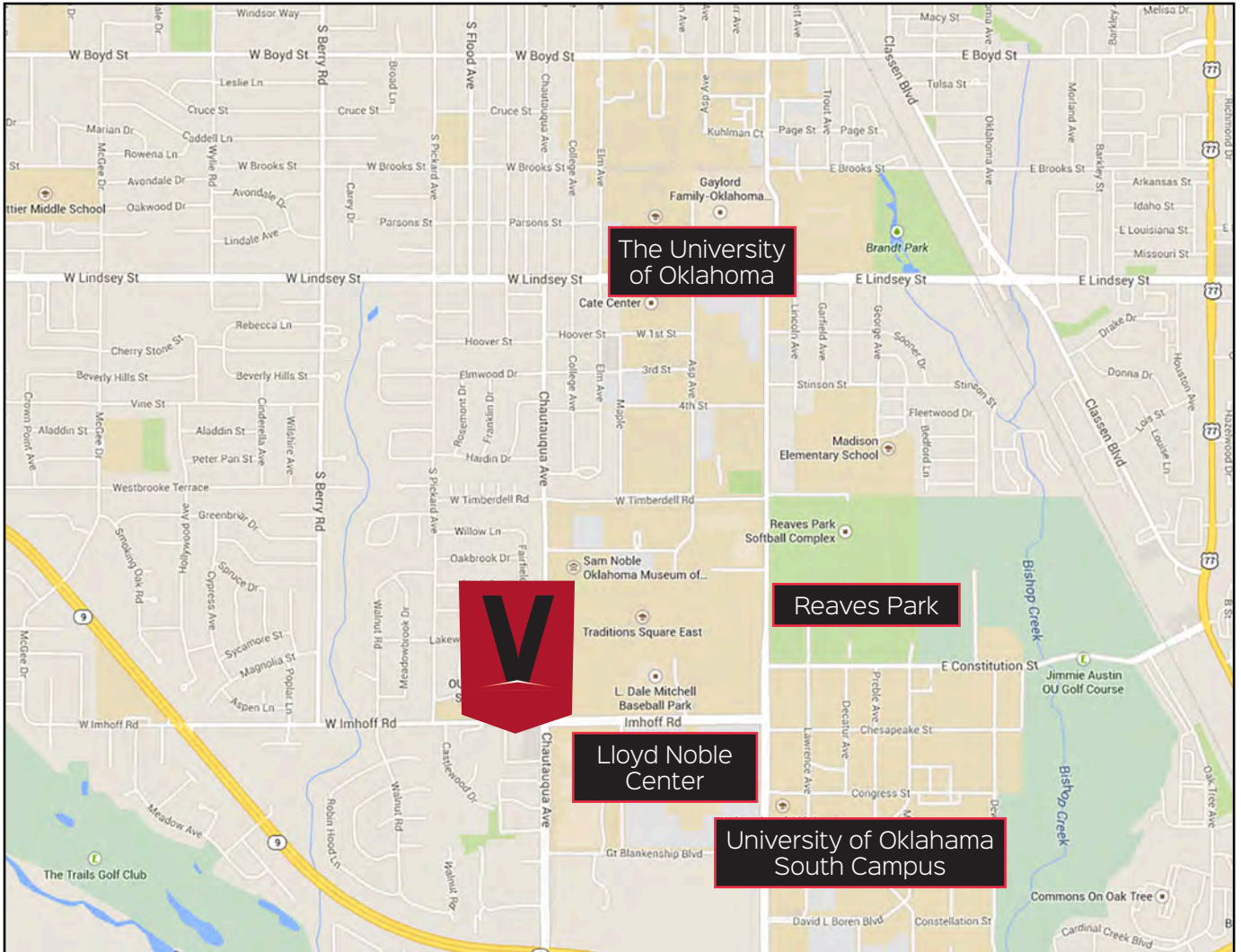








the LOCATION



**750 W IMHOFF ROAD
NORMAN, OK 73072**

Located on the southwest corner of Imhoff and Chautauqua just 600 feet from a CART stop, a quarter of a mile from Lloyd Noble Center and one mile from campus.

the PROJECT

theVUE is a 79 room, five tower, four level complex connected by covered breezeways, elevator access and stair towers wrapped in a sheer stainless steel mesh. Masonry, articulated stucco and red composite panels clad the exterior and seamlessly blend the striking elements of the design. This one of a kind dwelling affords its residents unique amenities including secure card access, a safe room on each level, assigned parking, tanning capsule, lounge pool with BBQ grilling, and a stunning rooftop terrace with unobstructed views to the University of Oklahoma and city beyond.

Additional features include:

A two story Lobby Lounge features a gourmet coffee bar and computer kiosk.

A well equipped Fitness Room, again with a great view of the campus.

A Media Room for studying or watching the big game, featuring several video screens and panoramic vistas.

Fully furnished two and four bedroom apartments with high-end finishes, individual bathrooms for each room, full size washer/dryer and private balconies.

A Rooftop Sky Lounge crowns the complex with a quintessential urban living experience five stories above Norman. Residents enjoy an outdoor kitchen, garden, and relaxed seating... It's the perfect place to capture theVUE.

LOT SIZE: 60,635 SF (ZONED RM-6)
NUMBER OF BUILDINGS: 5 Connected
TOTAL SQUARE FOOTAGE: 32,890SF
COMMON AREAS INTERIOR: 2,398 SF
COMMON AREAS EXTERIOR: 7,325 SF
PROPERTY TYPE: STUDENT HOUSING
ROOFTOP TERRACE: 1298 SF

OPEN PARKING SPACES: 40
GATED PARKING SPACES: 48
TWO BEDROOM APARTMENTS: 8
THREE BEDROOM APARTMENT: 1
FOUR BEDROOM APARTMENTS: 15
INDIVIDUAL BEDROOMS: 79
BUILT: AUGUST 2015

Sky Lounge
Rooftop Terrace
Fully Furnished
Secure Access

Private Balcony
Swimming Pool
Fitness Room
Close to Campus

Media Room
Safe Rooms
Bar-B-Que
Gated Parking

the APARTMENTS



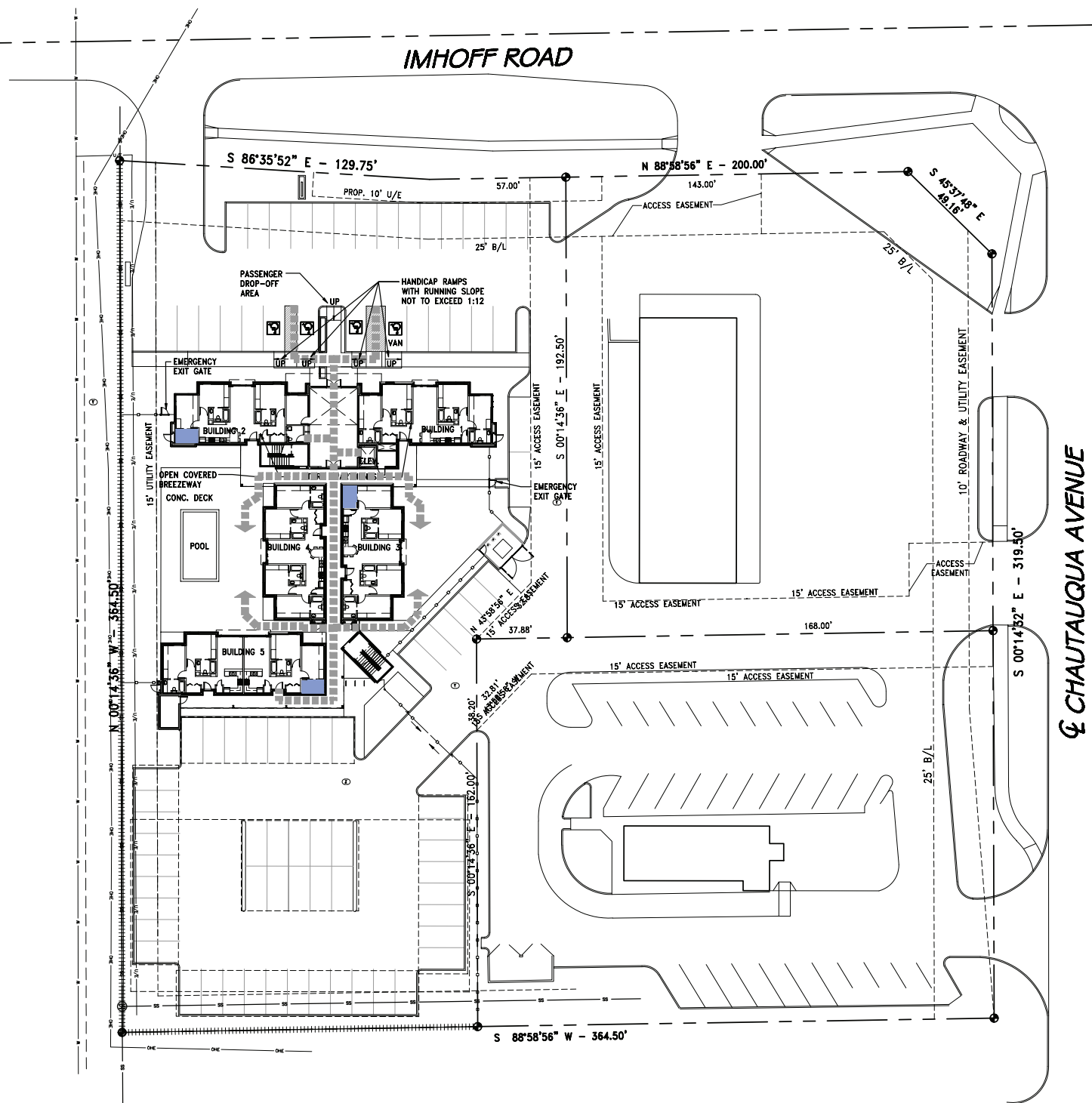
Two Bedroom - 747 Square Feet

Private Bathroom
Fully Furnished
Luxury Kitchen
Washer & Dryer
Limited Access
Private Balcony
Flat Screen Television
USB Charging Outlet

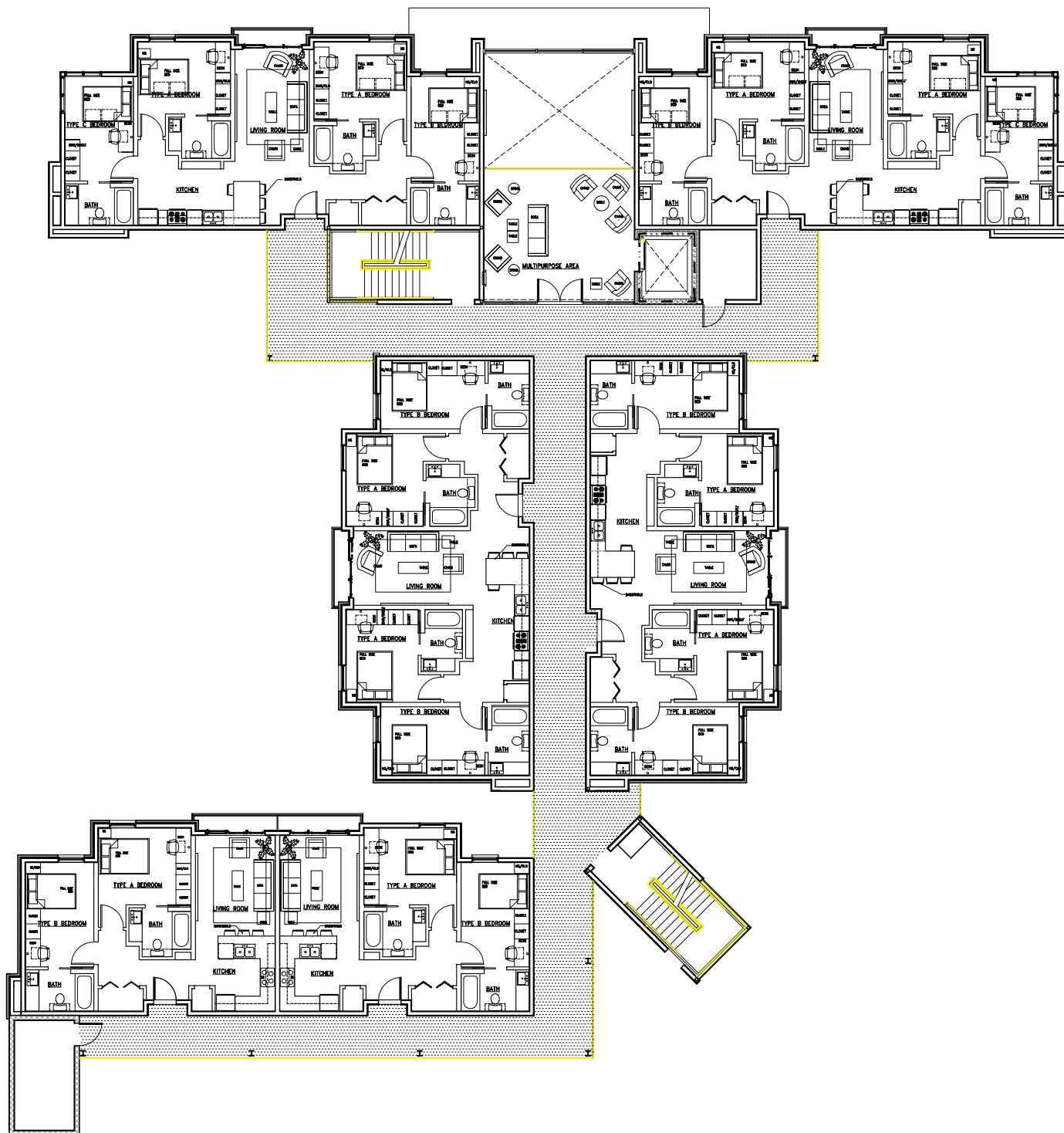


Four Bedroom - 1240 Square Feet

Private Bathroom
 Fully Furnished
 Luxury Kitchen
 Washer & Dryer
 Limited Access
 Private Balcony
 Flat Screen Television
 USB Charging Outlet



the BUILDINGS



the VIEW







General Contractor



Architect



www.theVUEou.com

750 W Imhoff Road
Norman, OK 73072

theVUE_Project_072116v9.3