



# 930 Truxtun Ave.

## Executive Suites Available for Lease

**1 SUITE AVAILABLE!**



**HENRY E. MENDEZ, JR.**

CA RE #01127054 CA DRE #02084340 • Broker/ Principal  
hmendez@cvcbrokers.com • 661.404.4090 Office  
930 Truxtun Ave., Suite 101, Bakersfield, CA 93301

*The information contained here may have been obtained from sources other than Central Valley Commercial Brokers. We have not verified such information and make no guarantees, warranties, or representations about such information. It is your responsibility to independently confirm its accuracy and completeness when purchasing/leasing the property.*

# FOR LEASE – Executive Suites

## PROPERTY INFORMATION

930 Truxtun Avenue is a two-story, free standing multi-tenant professional office building located on the northeast corner of Truxtun Avenue and 'O' Street in the Downtown Bakersfield Business Corridor. The building is walking distance to city and county administrative offices, courts, assessor's office, hall of records, Bakersfield City Police Department, Rabobank Convention Center, Amtrak Station, numerous law offices, restaurants, and businesses. Ideal location for legal, insurance and professional offices.

## AVAILABILITY

Multi-Tenant/ Executive Office Suites  
Building Size 9,000 SQFT  
Suite 203/204 736 SF.-\$1,800/Month  
Day Office 120 SF.- \$450/Month

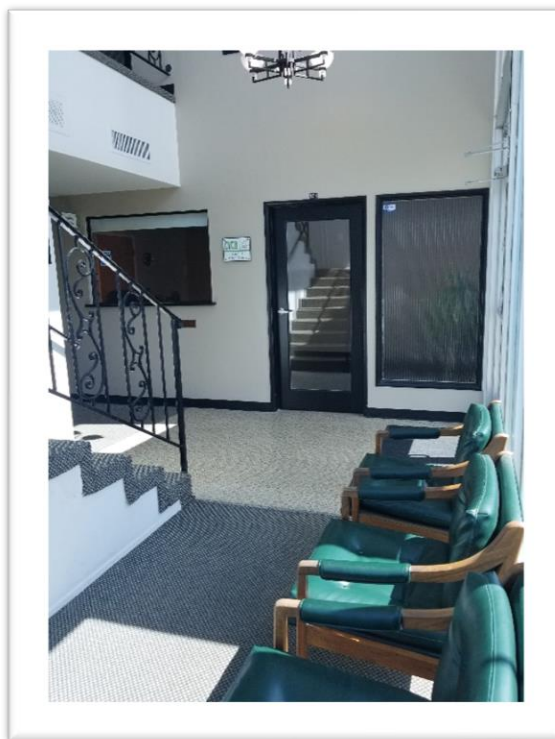
APN 006-222-07 & 08

## LEASE TYPE

FULL-SERVICE GROSS

## HIGHLIGHTS

12 Shared Parking Stalls  
2 To 5-Year Terms  
Ample Street Parking  
Full-Service Gross Leases  
Onsite Building Manager  
Receptionist Services Available Shared  
Conference Room Available Shared



## BUILDING ROSTER

### FIRST FLOOR

SUITE	TENANT
101	Central Valley Commercial Brokers, Inc.
102-103	Homewatch Caregivers
107	Law Office of Jorge Alesna, JR.
108	In the Waiting Doula Services
109	Thomas Brill
110	Law Offices of Mickey Fine
111	<b>DAY OFFICE</b>
113	<b>CONFERENCE ROOM</b>

### SECOND FLOOR

SUITE	TENANT
201	Kern Tutoring
202	Kern Tutoring
203-204	<b>AVAILABLE</b>
205	Stephanie Santos, LCSW
206	C & L Services
207	Three Moons Doula Collective
208	Timeless Beauty
209	Ryan T. Fallgatter Lawyer
210	DK Law
211	Coach Nursing, Inc.
212	Myers Insurance Agency

HENRY E. MENDEZ, JR.

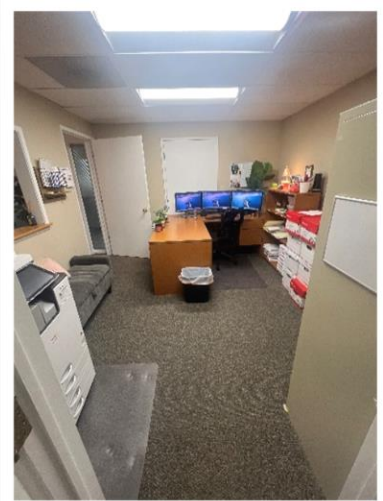
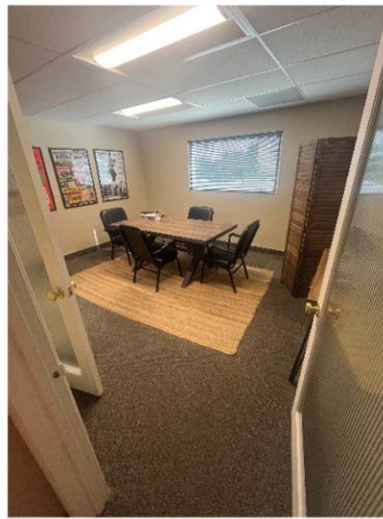
CA RE #01127054 CA DRE #02084340 • Broker/ Principal  
hmendez@cvcbrokers.com • 661.404.4090 Office  
930 Truxtun Ave., Suite 101, Bakersfield, CA 93301

*The information contained here may have been obtained from sources other than Central Valley Commercial Brokers. We have not verified such information and make no guarantees, warranties, or representations about such information. It is your responsibility to independently confirm its accuracy and completeness when purchasing/leasing the property.*

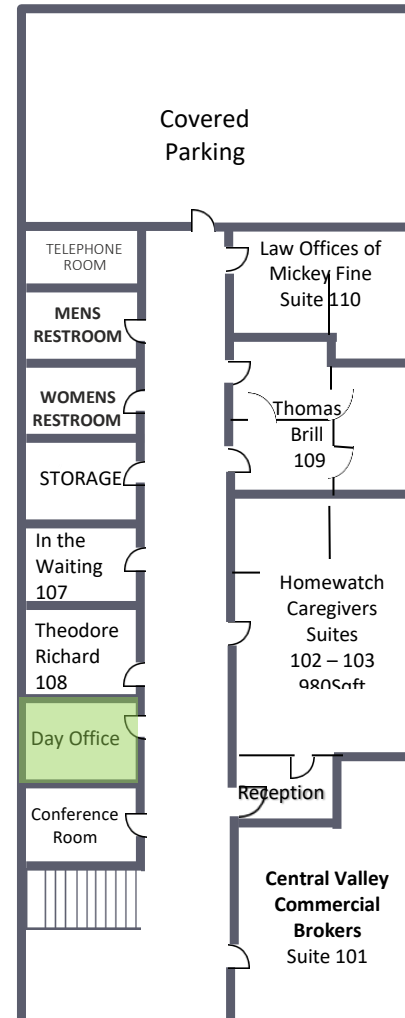


# FOR LEASE – Executive Suites

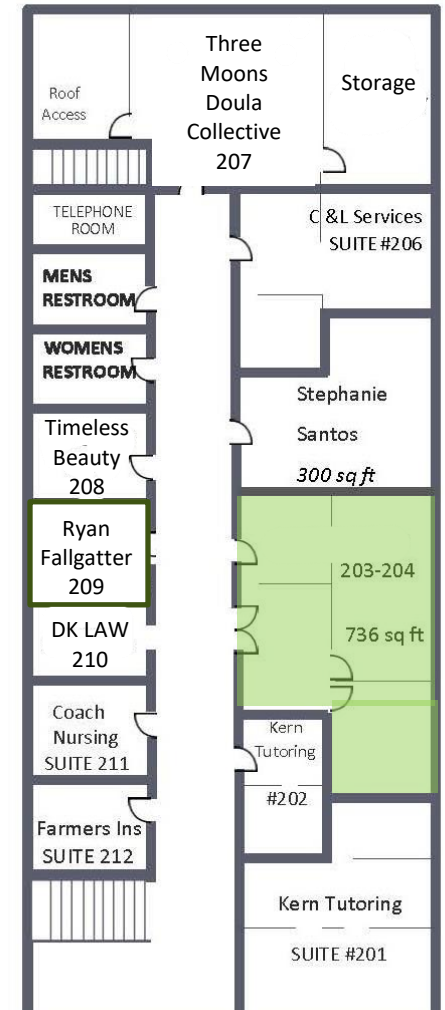
930 Truxtun Avenue



## FIRST FLOOR



## SECOND FLOOR



**HENRY E. MENDEZ, JR.**

CA RE #01127054 CA DRE #02084340 • Broker/ Principal  
hmendez@cvcbrokers.com • 661.404.4090 Office  
930 Truxtun Ave., Suite 101, Bakersfield, CA 93301

*The information contained here may have been obtained from sources other than Central Valley Commercial Brokers. We have not verified such information and make no guarantees, warranties, or representations about such information. It is your responsibility to independently confirm its accuracy and completeness when purchasing/leasing the property.*

# FOR LEASE – Executive Suites

930 Truxtun Avenue



**HENRY E. MENDEZ, JR.**

CA RE #01127054 CA DRE #02084340 • Broker/ Principal  
hmendez@cvcbrokers.com • 661.404.4090 Office  
930 Truxtun Ave., Suite 101, Bakersfield, CA 93301

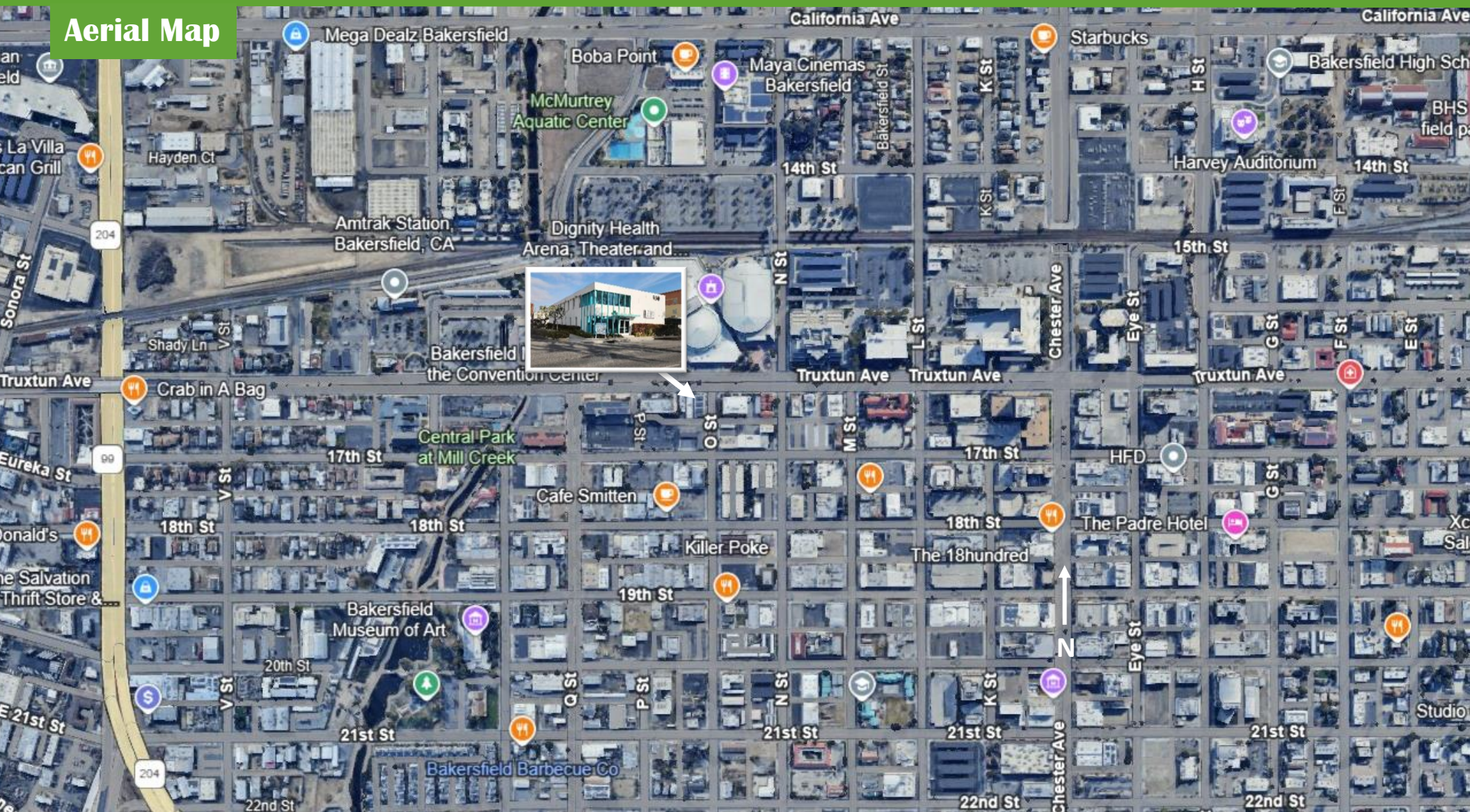
*The information contained here may have been obtained from sources other than Central Valley Commercial Brokers. We have not verified such information and make no guarantees, warranties, or representations about such information. It is your responsibility to independently confirm its accuracy and completeness when purchasing/leasing the property.*



# FOR LEASE – Executive Suites

930 Truxtun Avenue

## Aerial Map



**HENRY E. MENDEZ, JR.**

CA RE #01127054 CA DRE #02084340 • Broker/ Principal  
hmendez@cvcbrokers.com • 661.404.4090 Office  
930 Truxtun Ave., Suite 101, Bakersfield, CA 93301

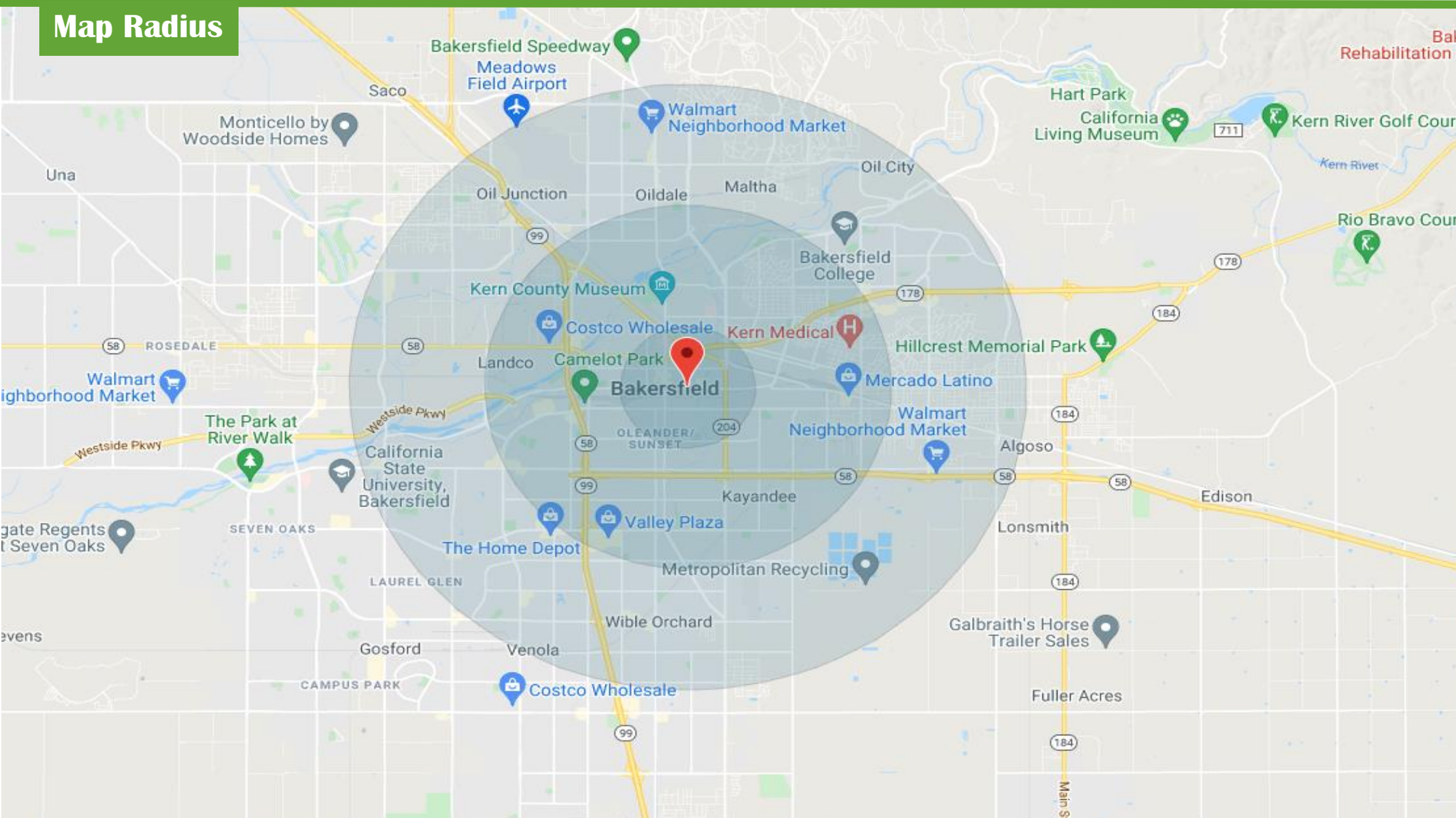
*The information contained here may have been obtained from sources other than Central Valley Commercial Brokers. We have not verified such information and make no guarantees, warranties, or representations about such information. It is your responsibility to independently confirm its accuracy and completeness when purchasing/leasing the property.*



# FOR LEASE – Executive Suites

930 Truxtun Avenue

Map Radius



**HENRY E. MENDEZ, JR.**

CA RE #01127054 CA DRE #02084340 • Broker/ Principal  
hmendez@cvcbrokers.com • 661.404.4090 Office  
930 Truxtun Ave., Suite 101, Bakersfield, CA 93301

The information contained here may have been obtained from sources other than Central Valley Commercial Brokers. We have not verified such information and make no guarantees, warranties, or representations about such information. It is your responsibility to independently confirm its accuracy and completeness when purchasing/leasing the property.