



Mt Zion Blvd



Richardson Pkwy

Mt Zion Pkwy



Atlanta Land Group



LAND FOR SALE

Richardson Pkwy

Morrow, GA 30236

Rosetta Dillard

404.680.1895

rdillard@AtlantaLandGroup.com

Robert Armstrong

404.790.6100

rarmstrong@AtlantaLandGroup.com

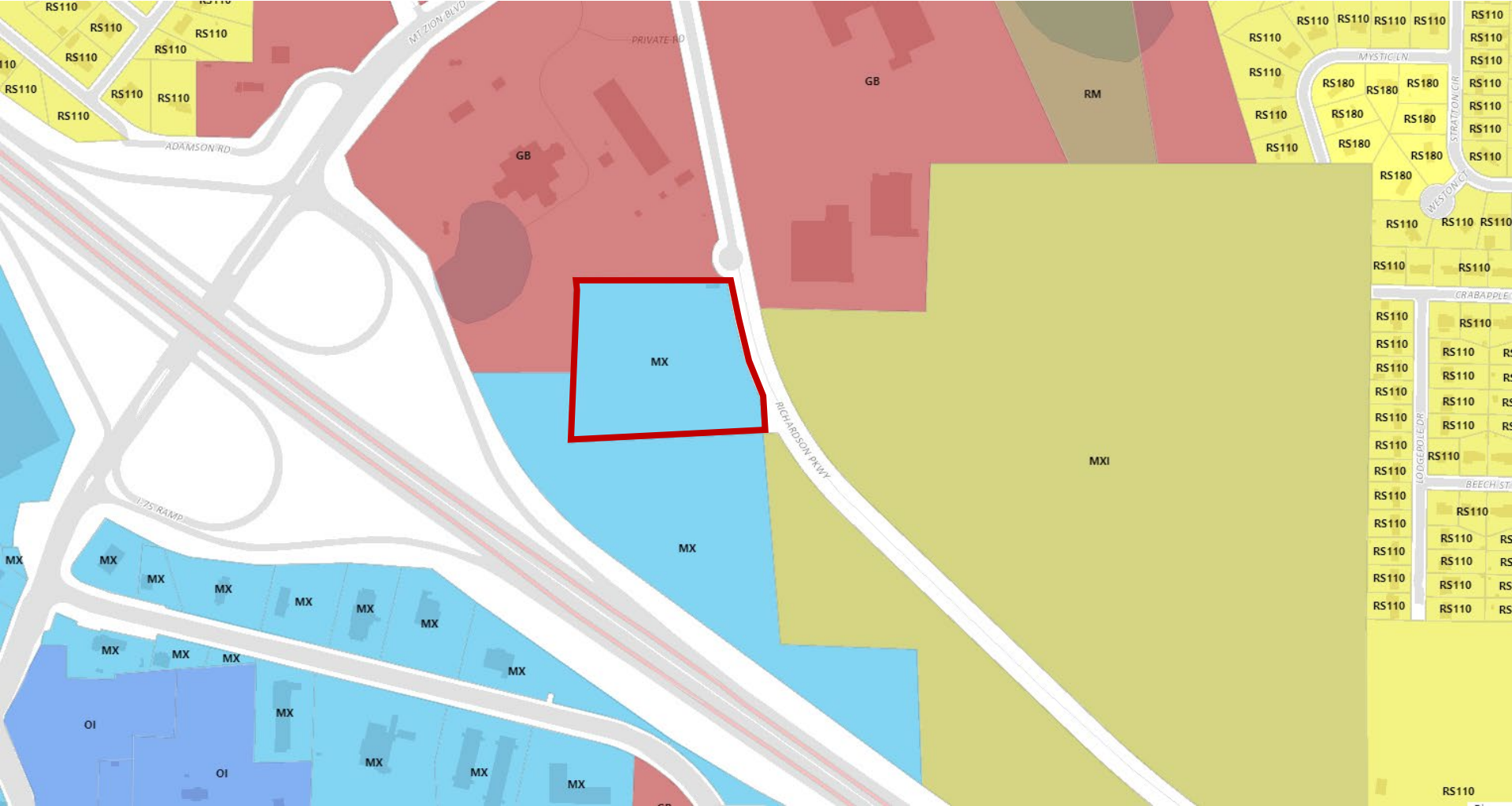
PROPERTY OVERVIEW

- +/- 7.02 Acres
- Clayton County
- Zoned MX – Mixed Use
- All Utilities Available
- +/- 524 ft Frontage on Richardson Pkwy
- Adjacent to Landmark Dealership and Future Apartment Development
- 24,200 ATD (20) on Mt Zion Blvd
- 140,000 ATD (20) on I-75
- Less than 1 mile from Exit 231 on I-75

Offering Price - \$250,000 per Acre



ZONING MAP



SUBMARKET AERIAL



Southlake Mall



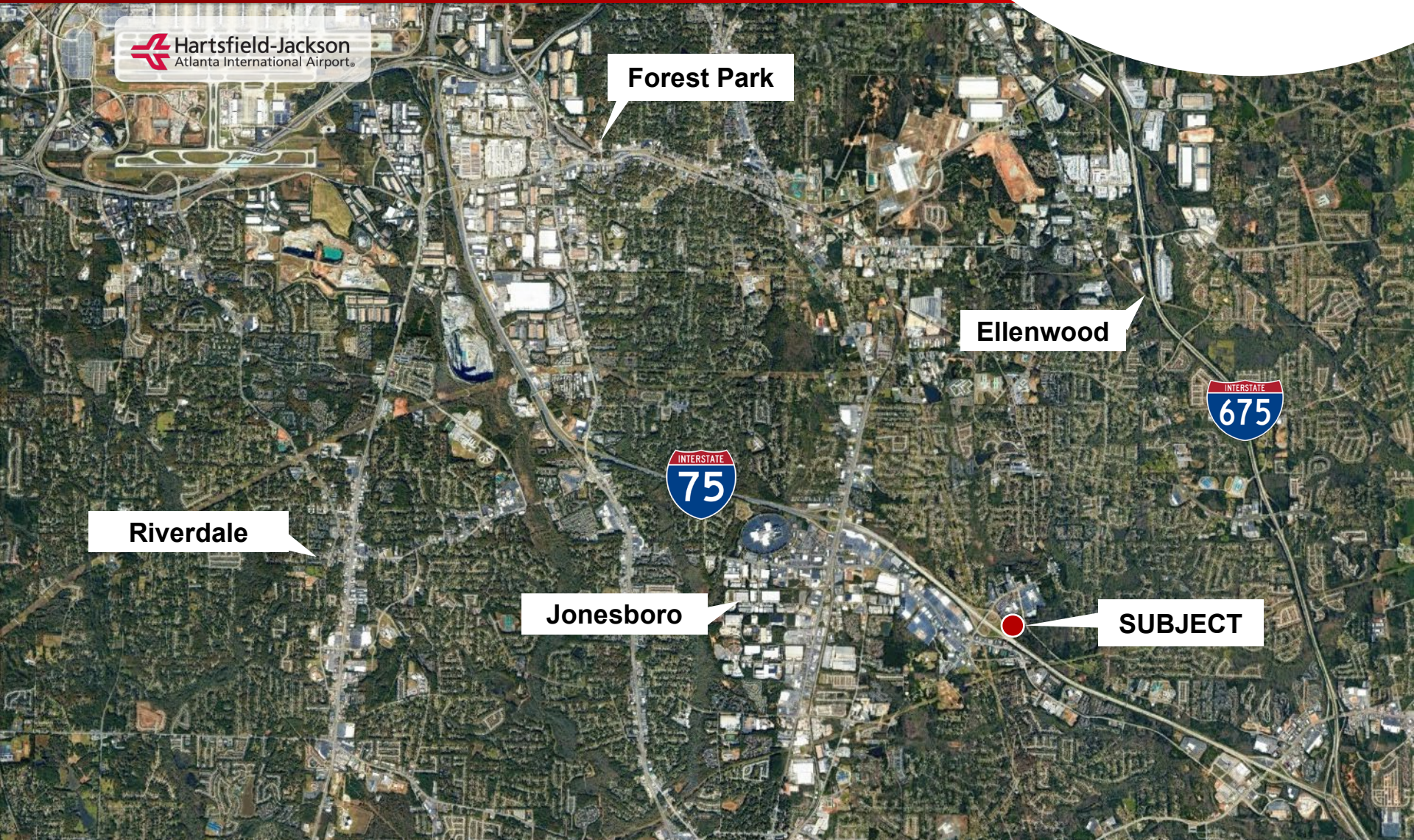
SUBJECT



Jonesboro Rd

Mt Zion HS

PROXIMITY MAP



 **Hartsfield-Jackson**
Atlanta International Airport

Forest Park

Ellenwood

Riverdale

INTERSTATE
75

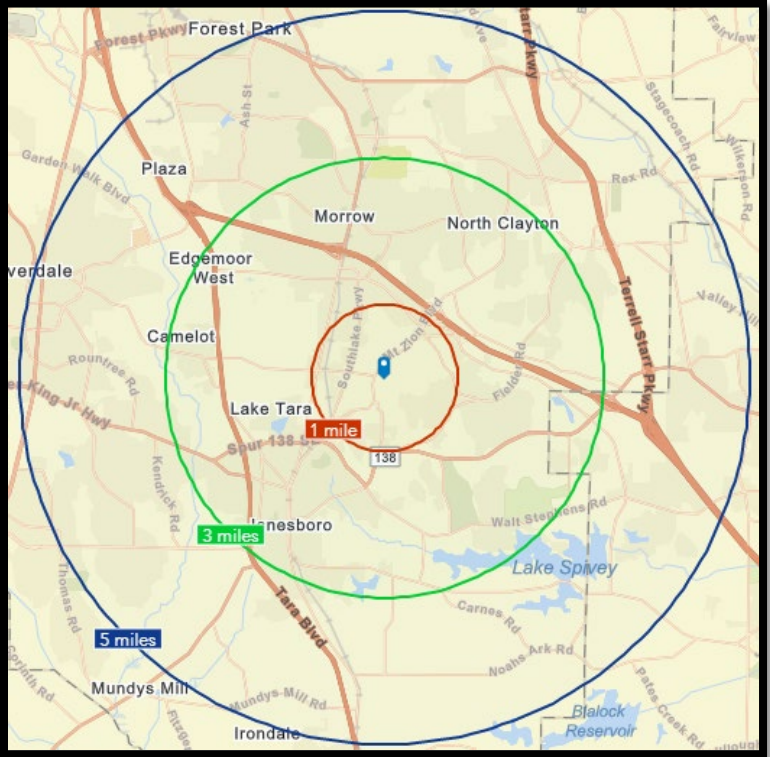
INTERSTATE
675

Jonesboro

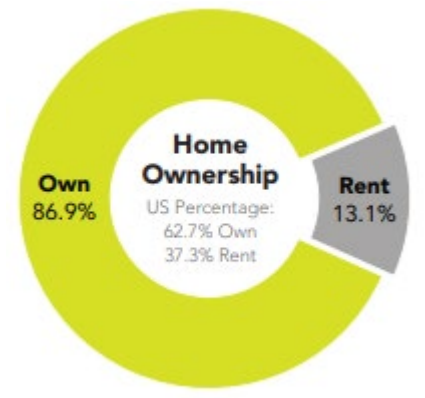
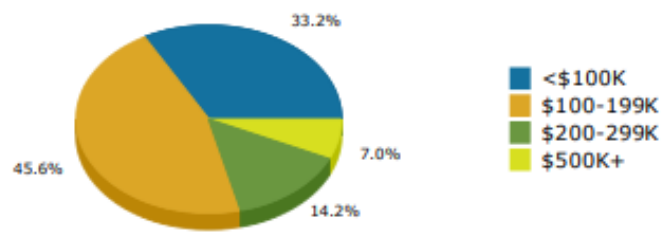
SUBJECT

Demographics Esri 2020

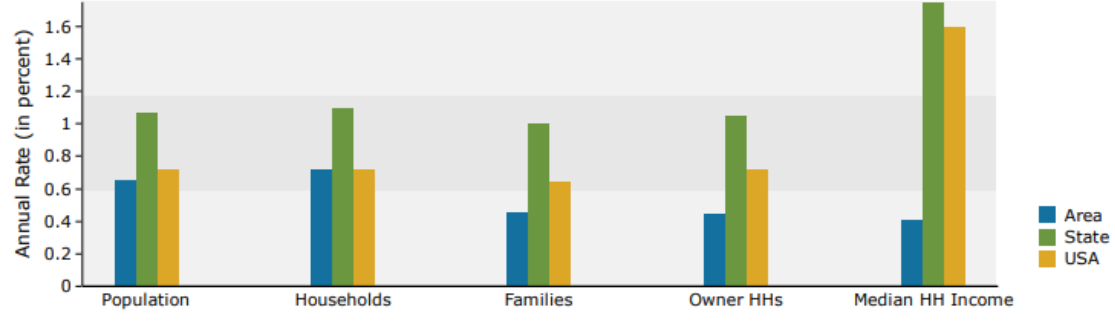
	Population	# of Households	Avg Household Income	Median Age
1 Mile	4,525	2,008	\$59,159	37
1-3 Miles	67,903	24,664	\$57,043	33
3-5 Miles	181,148	63,306	\$60,926	33



2020 Home Value



Trends 2020-2025



2020-2025 Annual Growth Rate

