

AVAILABLE FOR LEASE

±5,574 SF SECOND FLOOR SPACE

215 W. MAIN STREET

VISALIA, CALIFORNIA



JEFF BISCHOFBERGER
SENIOR VICE PRESIDENT/PRINCIPAL
C • 562.547.4488 | O • 909.373.2708
jbischof@lee-assoc.com
DRE #01512151

LEE & ASSOCIATES - ONTARIO
3535 Inland Empire Boulevard
Ontario, California 91764
(909) 989-7771 | lee-associates.com

LEE & ASSOCIATES
COMMERCIAL REAL ESTATE SERVICES
CORPORATE ID #00976995

AVAILABLE FOR LEASE

THE MIX | DOWNTOWN VISALIA

215 W. MAIN STREET
VISALIA, CALIFORNIA

PROPERTY FEATURES

- TWO-STORY ±11,148 SQUARE FOOT MULTI-TENANT BUILDING
- ±5,574 SQUARE FEET AVAILABLE | ENTIRE SECOND FLOOR SPACE
- THREE (3) ROLL UP WINDOW DOORS TO PROVIDE MAXIMUM AIR FLOW
- OPEN CEILING CONCEPT
- EXPOSED BRICK WALLS
- ELEVATOR SERVED
- HIGH END RESTROOM FIXTURES & FINISHES
- PLUMBING HOOK UPS AVAILABLE FOR RESTAURANT USE
- FLOOR DRAINS THROUGHOUT KITCHEN / PREP AREA
- ADDITIONAL ±625 SQUARE FOOT BASEMENT STORAGE SPACE AVAILABLE
- 23' CAPTIVE AIR HOOD (TO BE PROVIDED BY LANDLORD)
- FULL BUILDING REHAB COMPLETED IN 2025
- FIRST FLOOR FULLY LEASED
- STREET PARKING + PARKING STRUCTURE WITHIN WALKING DISTANCE
- MAIN STREET ADDRESS



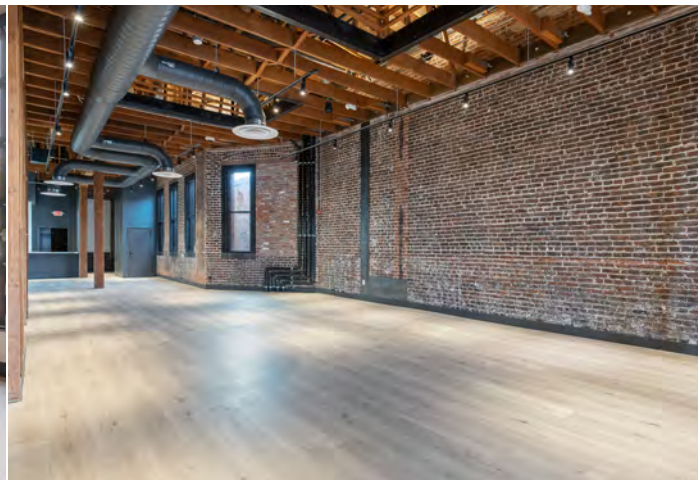
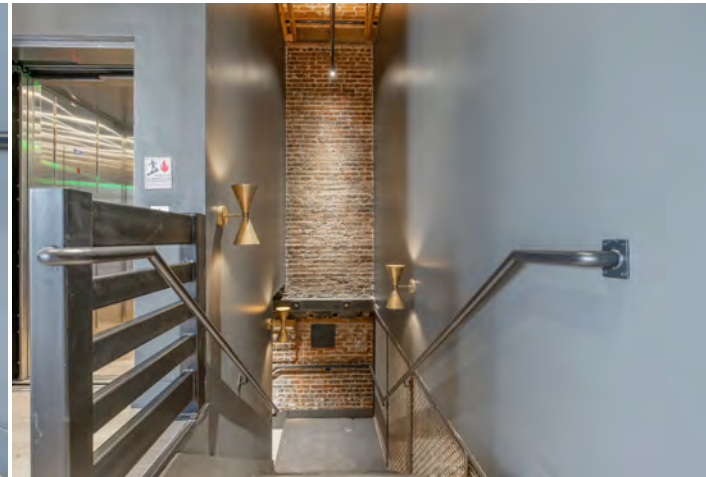
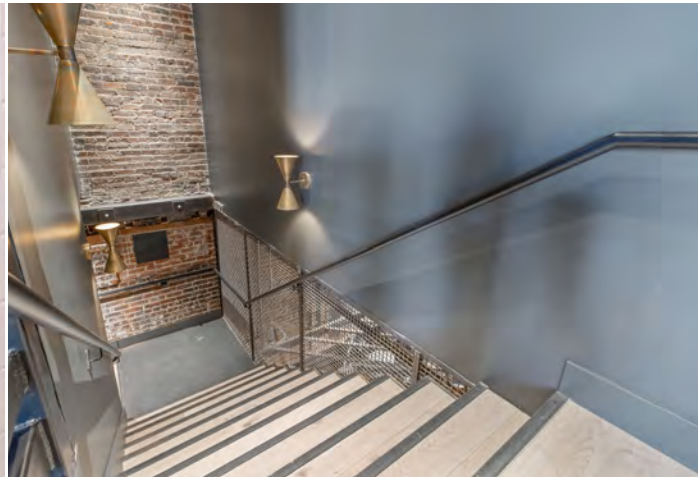
JEFF BISCHOFBERGER
SENIOR VICE PRESIDENT/PRINCIPAL
C • 562.547.4488 | O • 909.373.2708
jbischof@lee-assoc.com
DRE #01512151

LEE & ASSOCIATES - ONTARIO
3535 Inland Empire Boulevard
Ontario, California 91764
(909) 989-7771 | lee-associates.com

LEE & ASSOCIATES
COMMERCIAL REAL ESTATE SERVICES
CORPORATE ID #00976995

AVAILABLE FOR LEASE
THE MIX | DOWNTOWN VISALIA

215 W. MAIN STREET
VISALIA, CALIFORNIA



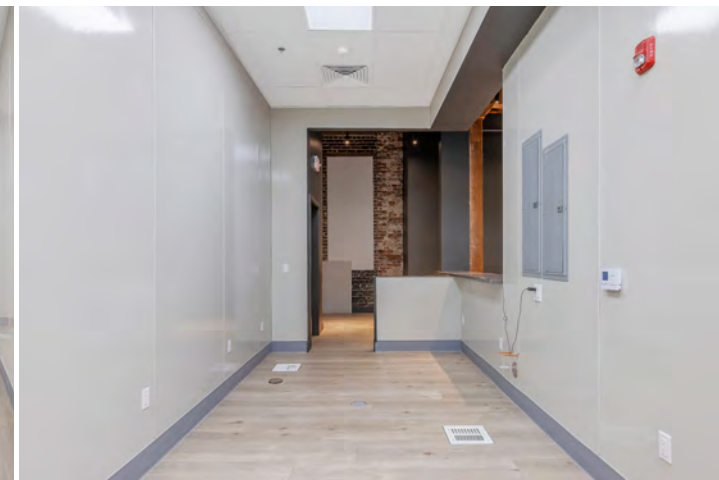
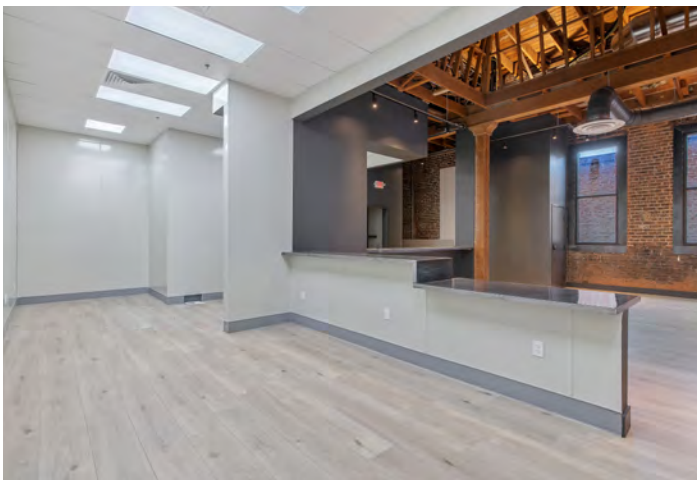
JEFF BISCHOFBERGER
SENIOR VICE PRESIDENT/PRINCIPAL
C • 562.547.4488 | O • 909.373.2708
jbischof@lee-assoc.com
DRE #01512151

LEE & ASSOCIATES - ONTARIO
3535 Inland Empire Boulevard
Ontario, California 91764
(909) 989-7771 | lee-associates.com

LEE & ASSOCIATES
COMMERCIAL REAL ESTATE SERVICES
CORPORATE ID #00976995

AVAILABLE FOR LEASE
THE MIX | DOWNTOWN VISALIA

215 W. MAIN STREET
VISALIA, CALIFORNIA



JEFF BISCHOFBERGER
SENIOR VICE PRESIDENT/PRINCIPAL
C • 562.547.4488 | O • 909.373.2708
jbischof@lee-assoc.com
DRE #01512151

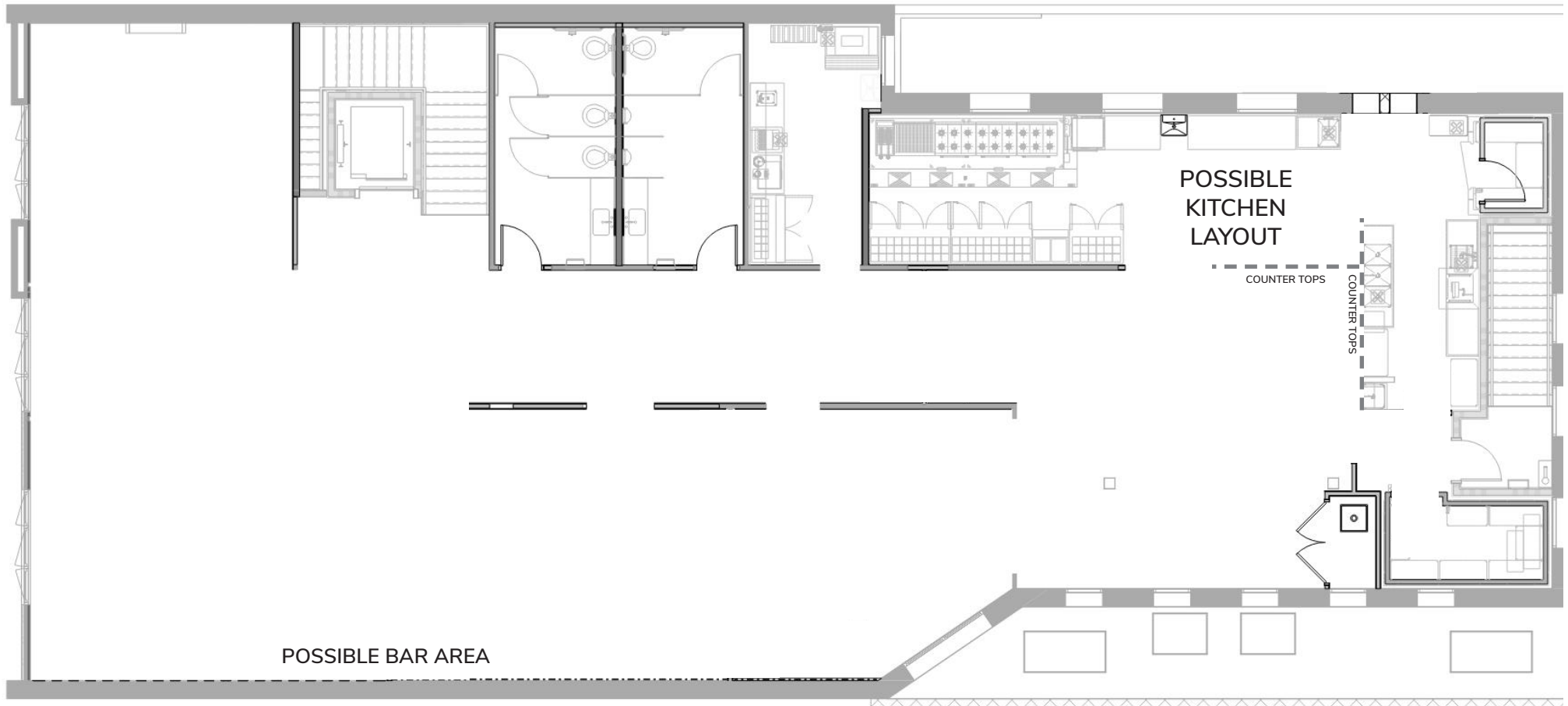
LEE & ASSOCIATES - ONTARIO
3535 Inland Empire Boulevard
Ontario, California 91764
(909) 989-7771 | lee-associates.com

LEE & ASSOCIATES
COMMERCIAL REAL ESTATE SERVICES
CORPORATE ID #00976995

AVAILABLE FOR LEASE
THE MIX | DOWNTOWN VISALIA

215 W. MAIN STREET
VISALIA, CALIFORNIA

**SECOND FLOOR
FLOOR PLAN**



JEFF BISCHOFBERGER
SENIOR VICE PRESIDENT/PRINCIPAL
C • 562.547.4488 | O • 909.373.2708
jbischof@lee-assoc.com
DRE #01512151

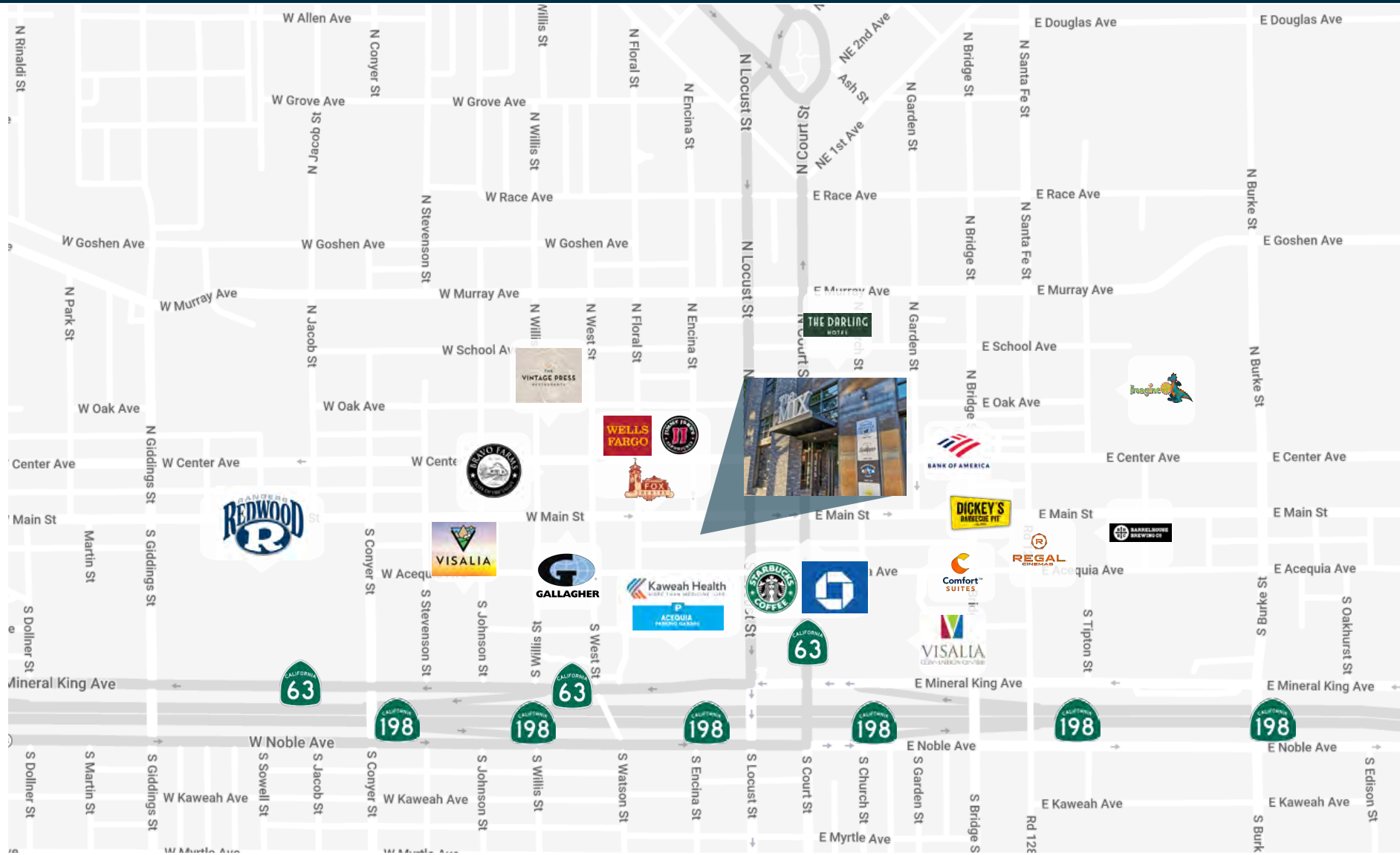
LEE & ASSOCIATES - ONTARIO
3535 Inland Empire Boulevard
Ontario, California 91764
(909) 989-7771 | lee-associates.com

LEE & ASSOCIATES
COMMERCIAL REAL ESTATE SERVICES
CORPORATE ID #00976995

AVAILABLE FOR LEASE THE MIX | DOWNTOWN VISALIA

215 W. MAIN STREET
VISALIA, CALIFORNIA

LOCATION
MAP



JEFF BISCHOFBERGER
SENIOR VICE PRESIDENT/PRINCIPAL
C • 562.547.4488 | O • 909.373.2708
jbischof@lee-assoc.com
DRE #01512151

LEE & ASSOCIATES - ONTARIO
3535 Inland Empire Boulevard
Ontario, California 91764
(909) 989-7771 | lee-associates.com

LEE & ASSOCIATES
COMMERCIAL REAL ESTATE SERVICES
CORPORATE ID #00976995

THE MIX | DOWNTOWN VISALIA

215. W. MAIN STREET, VISALIA, CALIFORNIA

FOR MORE INFORMATION, PLEASE CONTACT:

JEFF BISCHOFBERGER

SENIOR VICE PRESIDENT/PRINCIPAL

C • 562.547.4488 | O • 909.373.2708

jbischof@lee-assoc.com

DRE #01512151

LEE & ASSOCIATES - ONTARIO

3535 Inland Empire Boulevard | Ontario, California 91764

(909) 989-7771 | lee-assoc.com

Corporate ID: 00976995



LEE &
ASSOCIATES

COMMERCIAL REAL ESTATE SERVICES
ONTARIO