

205 DETROIT STREET

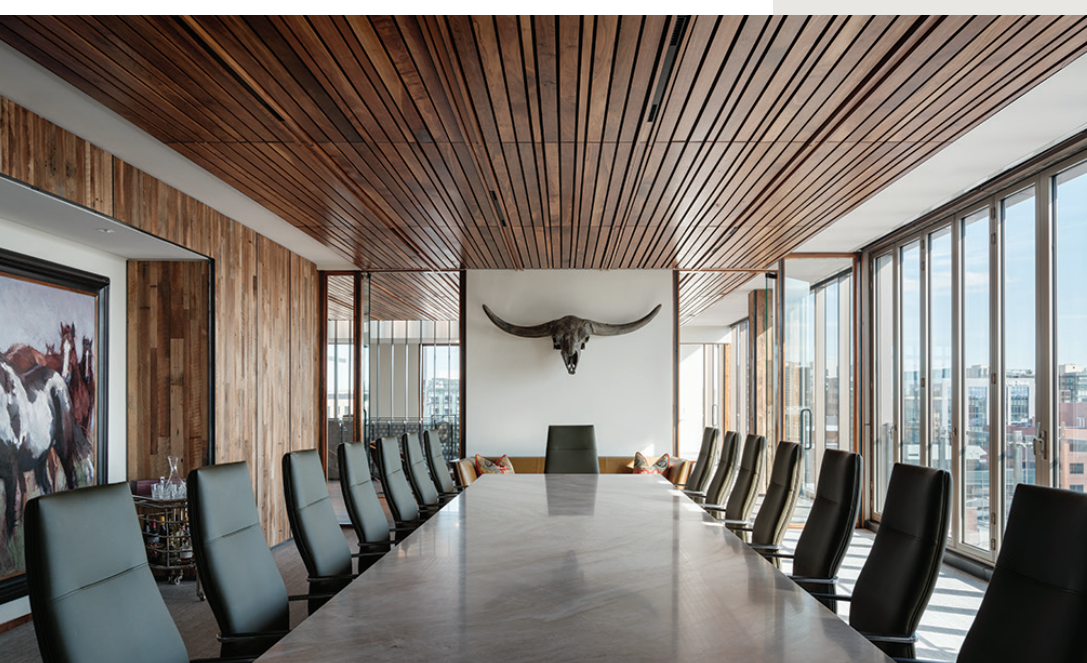
**TOP FLOOR
AVAILABLE**

**CLASS A OFFICE SUBLEASE
AVAILABLE IN CHERRY CREEK NORTH!**



**15,808 RSF AVAILABLE
TERM THROUGH 6/30/31**





BUILDING DETAILS:



BUILDING SIZE:
74,085 RSF



CLASS:
A



BUILT IN:
2019



PARKING:
1.5:1,000



**TYPICAL
FLOORPLATE**
10,000 RSF



FLOORS:
8

**9,869 RSF
AVAILABLE
ON FLOOR 8**



**INTERCONNECTED
STAIRWELL**

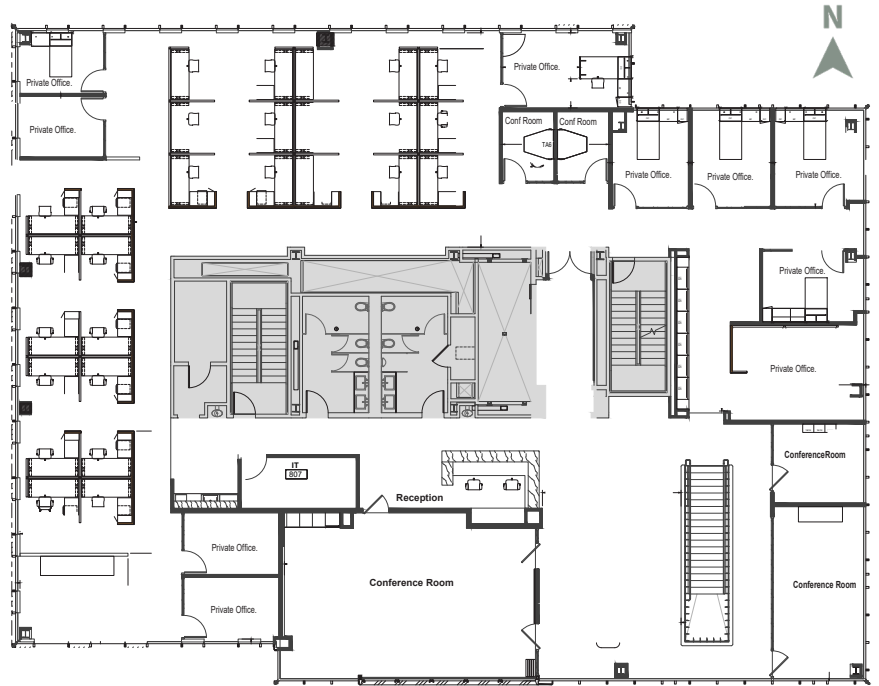


**5,939 RSF
AVAILABLE
ON FLOOR 7**



RARE, TWO-FLOOR BLOCK IN THE HEART OF CHERRY CREEK NORTH.

8TH FLOOR: 9,869 SF



7TH FLOOR: 5,939 SF



SUBLEASE DETAILS:

SUBLEASE SIZE:
15,808 RSF

AVAILABLE:
Q1 2026

TERM:
Through 6/30/31

DIVISIBLE:
5,939 SF

RATE:
Negotiable

BUILDING SIGNAGE:
Available

FOR LEASING INFORMATION CONTACT:

JLL
Jamie Roupp
+1 303 217 7947
james.roupp@jll.com

JLL
John Beason
+1 303 217 7949
john.beason@jll.com

Roche & Company
Roche Fore
+1 720 560 5605
roche@rochecompany.com

