



California Professional Center | 1400 South Grand Ave. | Los Angeles, CA
Medical Suites For Lease

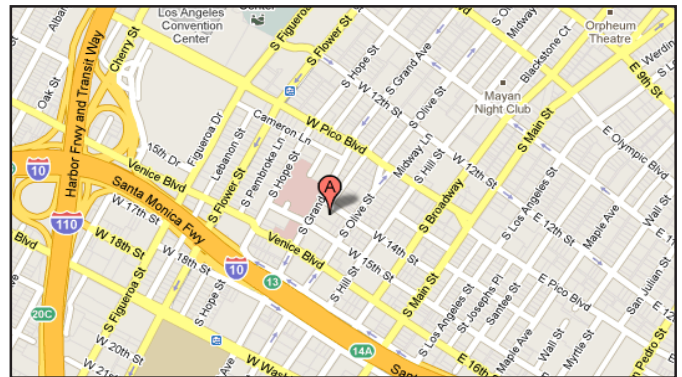
Available Suites	Rentable SF	Rental Rates
Suite 605	2,390 RSF	\$3.95 FSG
Suite 610	1,336 RSF	\$3.95 FSG

Features

- Panoramic city views, beautiful exterior & lobbies
- Professional management
- On-site lobby security officer
- Security camera DVR system
- Common staff breakroom, lounge and exterior patio

Parking

- Ample parking - floors 2-5
- On-site parking attendant and 24/7 access



Contact

Erik Van't Hof
 (310) 517-4877
 erikv@medicalasset.com
 DRE#: 01055014

Jeffrey D. Cunningham
 (310) 517-4860
 jeffc@medicalasset.com
 DRE#: 01363877

www.medicalasset.com
(310) 530-6060

South Bay
 201 Continental Blvd., Ste. 210
 El Segundo, CA 90245

Downtown Los Angeles
 1400 S. Grand Ave., Ste. 808
 Los Angeles, CA 90015

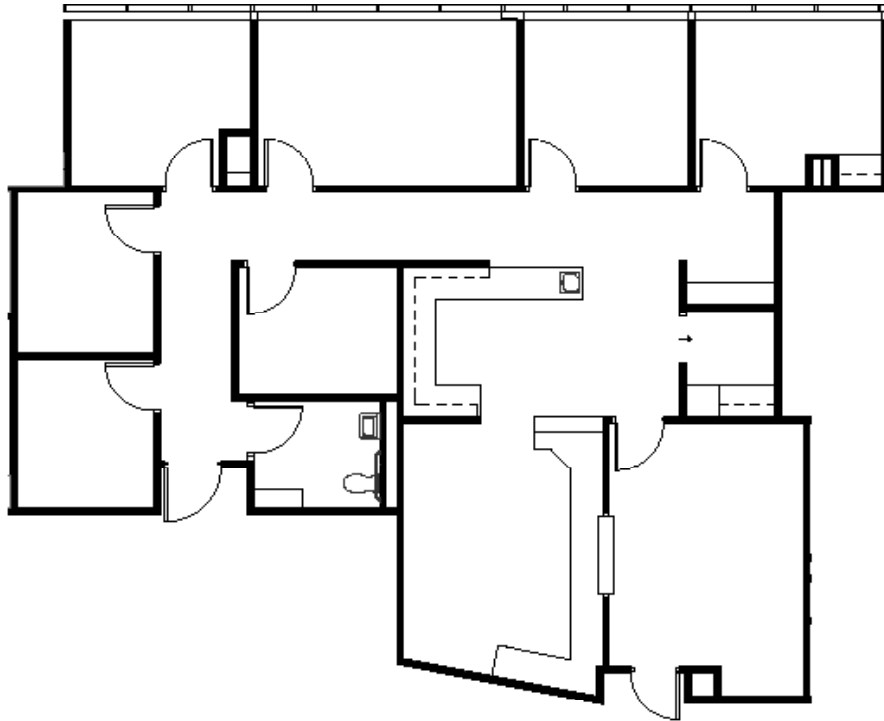
San Fernando Valley
 5411 Eriwanda Ave., Ste. 208
 Tarzana, CA 91356

Long Beach
 1040 Elm Ave., Ste. 308
 Long Beach, CA 90813



California Professional Center | 1400 South Grand Ave. | Floor Plans

Suite 605 2,390 RSF



Suite 610 1,336 RSF

