



**13765-F ALTON
IRVINE, CA 92618**

NEAR THE GREAT PARK

FLEX BUILDING FOR LEASE

LIPPINCOTT
Realty

OFFERED AT \$22.80 SF/YR

PROPERTY DETAIL



4,991 SQFT Office
& Warehouse



Near I405 & I5
+241 Toll Road



Warehouse + 2
Roll-up doors



High Signage
Visibility



✉ evan@lippincottrealty.com

🌐 www.lippincottrealty.com

📍 @Lippincottrealty



More Info : 949-283-0710



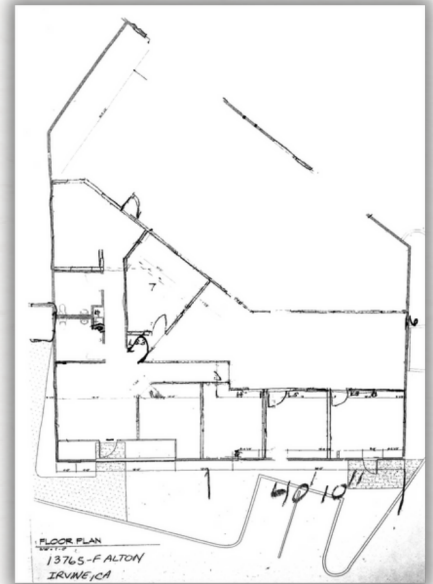
13765-F ALTON IRVINE, CA 92618

NEAR THE GREAT PARK

OFFERED AT \$21.60 SF/YR

PROPERTY DETAIL

- ✔ Large front facing windows
- ✔ Built out kitchen space
- ✔ Ideal end unit with vehicle access
- ✔ Prime signage visibility
- ✔ Warehouse includes racks + lift
- ✔ Highly flexible & Intelligent layout



Evan Lippincott
REALTOR® C2EX ENDORSED
DRE# 02130664
Home Smart EGR | Ladera Realty

✉ evan@lippincottrealty.com
🌐 www.lippincottrealty.com
📍 @Lippincottrealty



More Info : 949-283-0710