

# 1026 THIRD AVENUE

BETWEEN 60TH & 61ST STREETS | UPPER EAST SIDE



# 1026 THIRD AVENUE

BETWEEN 60TH & 61ST STREETS | UPPER EAST SIDE

## PROPERTY HIGHLIGHTS

- Situated at the base of a new, 110 unit luxury residential development
- No basement
- Non-vented cooking considered
- High foot traffic area
- Neighboring tenants:

*Bloomingdale's, Isle of Capri, Nuts Factory, Anassa Taverna, Juice Press, Daniel's Coffee, PupStudio, BondVet, Black Press Coffee, Fleet Feet, Chipotle, & more!*

**SIZE:** 1,912 SF Ground Floor

**FRONTAGE:** 20'

**POSSESSION:** ASAP

**ASKING RENT:** Upon Request

**TRANSPORTATION:** 4 5 6 F Q R W



All information supplied in this marketing presentation and/or flyer is from sources deemed reliable and is furnished subject to errors, omissions, modifications, removal of listings from sale/lease and to any listing condition. Any square footage, dimensions, floor plans and/or technical data set forth are approximations and are subject to further elaboration/confirmation.

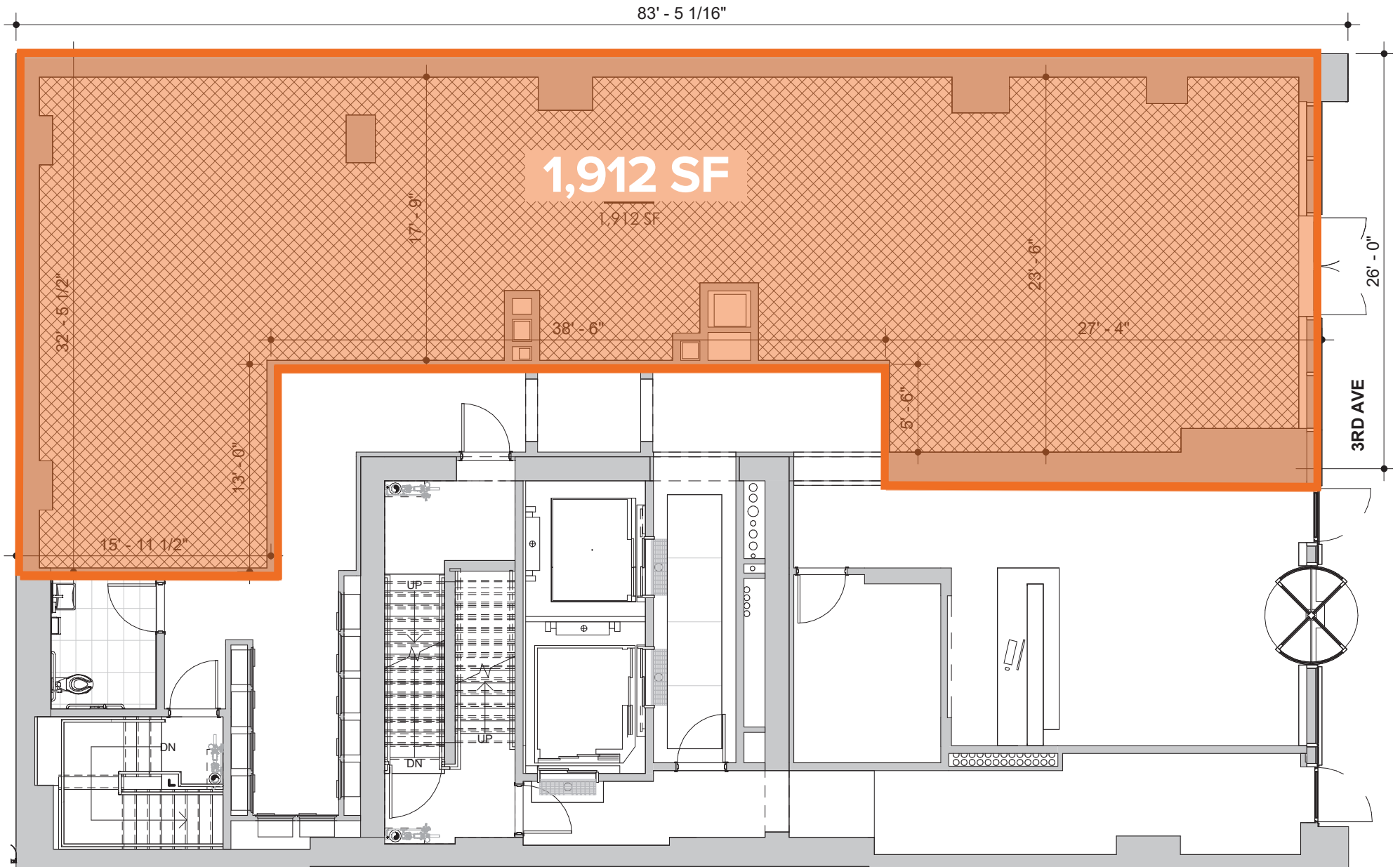




# 1026 THIRD AVENUE

BETWEEN 60TH & 61ST STREETS | UPPER EAST SIDE

Floor Plans:



All information supplied in this marketing presentation and/or flyer is from sources deemed reliable and is furnished subject to errors, omissions, modifications, removal of listings from sale/lease and to any listing condition. Any square footage, dimensions, floor plans and/or technical data set forth are approximations and are subject to further elaboration/confirmation.

# 1026 THIRD AVENUE

BETWEEN 60TH & 61ST STREETS | UPPER EAST SIDE

FOR MORE INFORMATION,  
PLEASE CONTACT:

**MADDY SOFFER**

347.752.3350 | MSoffer@ksrny.com

**CAROLINA AZIZ**

516.640.6961 | CAziz@ksrny.com

**IKE BIBI**

347.417.2860 | IBibi@ksrny.com

