

Tindecó Wharf
2809 Boston Street
Baltimore, MD 21224



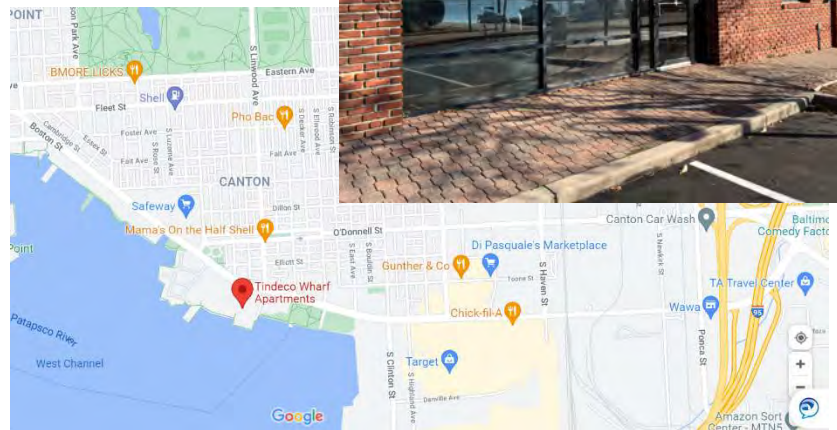
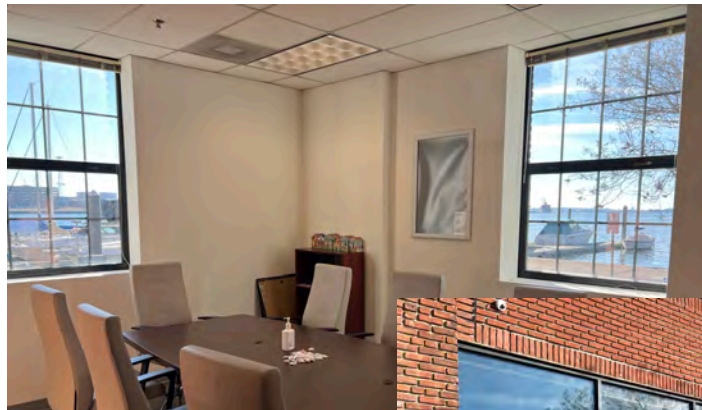
RARELY AVAILABLE 1ST FLOOR @ TINDECO WHARF IN CANTON



AVAILABLE FOR LEASE

PROPERTY HIGHLIGHTS

- Suite 11: 2,200 SF (Corner Suite w/ waterviews, furniture can be included)
- Suite 5: 2,045 SF, open suite
- Street level - perfect for medical, office and retail uses
- Parking on site
- Nearby Amenities: Restaurants, Lighthouse Liquors, New Marina, Canton Waterfront Park, Canton Crossing, The Promenade
- Easy access I-95, I-895 & I-83
- On-site property management



RENTAL RATE

- \$26.00/SF, net of utilities and janitorial

FOR ADDITIONAL INFORMATION, CONTACT

DOUGLAS KAUFMAN

410.952.3290

dkaufman@agmcommercial.com

AGM Commercial Real Estate Advisors 921 E. Fort Avenue, Suite 230 Baltimore, MD 21230 www.agmcommercial.com

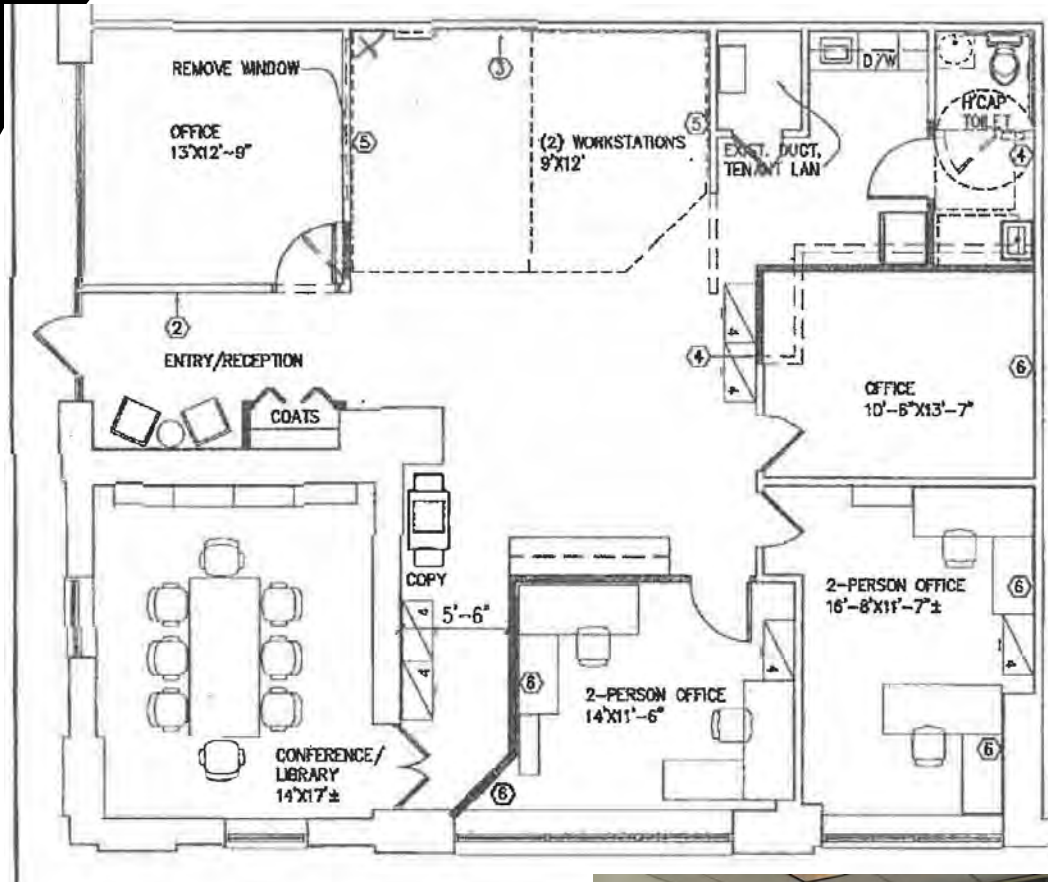
Although information contained herein is from sources deemed reliable, such information has not been verified and is submitted subject to errors, omissions, change of price, withdrawal or further change without notice. We include projections, opinion, assumptions or estimates for example only, and they may not represent current or future performance of the property. You, along with your tax and legal advisors, should conduct your own investigation of the property and transaction.

Tindeco Wharf
2809 Boston Street
Baltimore, MD 21224



AVAILABLE FOR LEASE

Suite 5: 2,200 SF (1st Floor)



FOR ADDITIONAL INFORMATION, CONTACT

DOUGLAS KAUFMAN

410.952.3290

dkaufman@agmcommercial.com

AGM Commercial Real Estate Advisors 921 E. Fort Avenue, Suite 230 Baltimore, MD 21230 www.agmcommercial.com

Although information contained herein is from sources deemed reliable, such information has not been verified and is submitted subject to errors, omissions, change of price, withdrawal or further change without notice. We include projections, opinion, assumptions or estimates for example only, and they may not represent current or future performance of the property. You, along with your tax and legal advisors, should conduct your own investigation of the property and transaction.

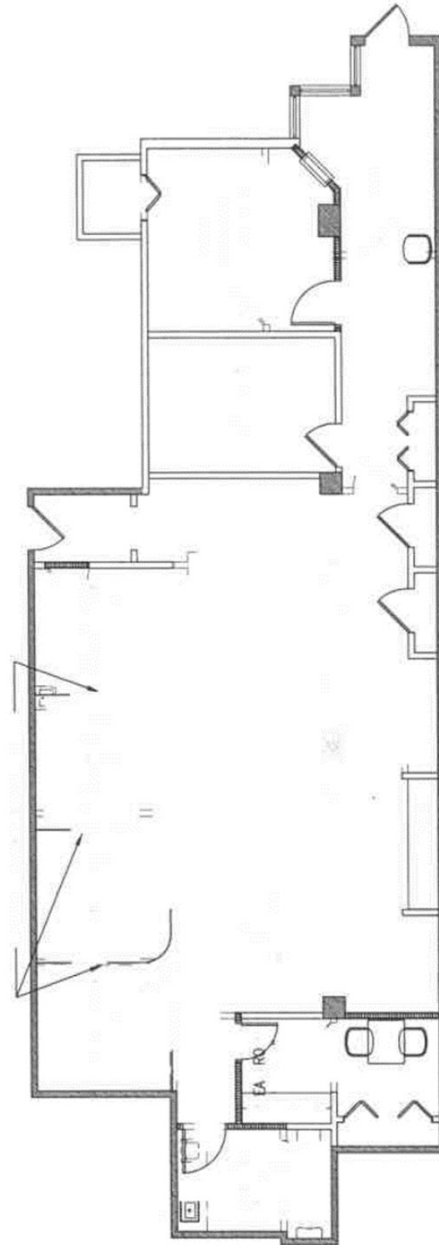
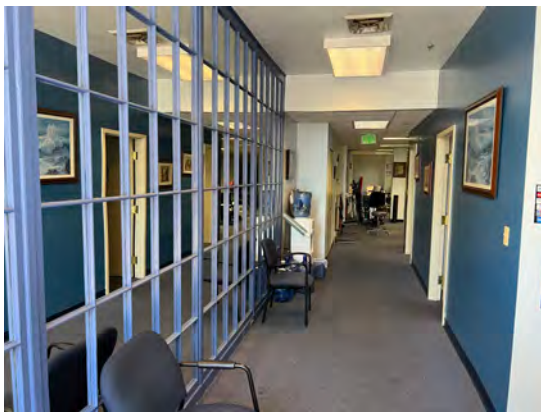
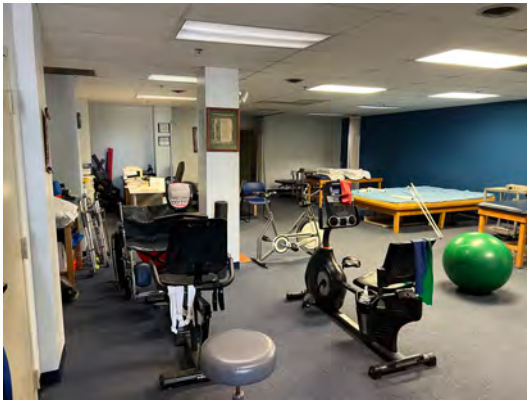
Tindeco Wharf
2809 Boston Street
Baltimore, MD 21224



A
V
A
I
L
A
B
L
E

F
O
R
L
E
A
S
E

**Suite 11: 2,045 SF
(1st Floor)**



FOR ADDITIONAL INFORMATION, CONTACT

DOUGLAS KAUFMAN

410.952.3290

dkaufman@agmcommercial.com

AGM Commercial Real Estate Advisors 921 E. Fort Avenue, Suite 230 Baltimore, MD 21230 www.agmcommercial.com

Although information contained herein is from sources deemed reliable, such information has not been verified and is submitted subject to errors, omissions, change of price, withdrawal or further change without notice. We include projections, opinion, assumptions or estimates for example only, and they may not represent current or future performance of the property. You, along with your tax and legal advisors, should conduct your own investigation of the property and transaction.