

FOR SALE

23832 ROCKFIELD BLVD., SUITE 120, LAKE FOREST, CA



FIRST FLOOR OFFICE CONDO

EXCLUSIVELY OFFERED BY:

RUSS SMITH

Vice President

949.263.5341

rsmith@voitco.com

Lic. #01919442

Voit

REAL ESTATE SERVICES

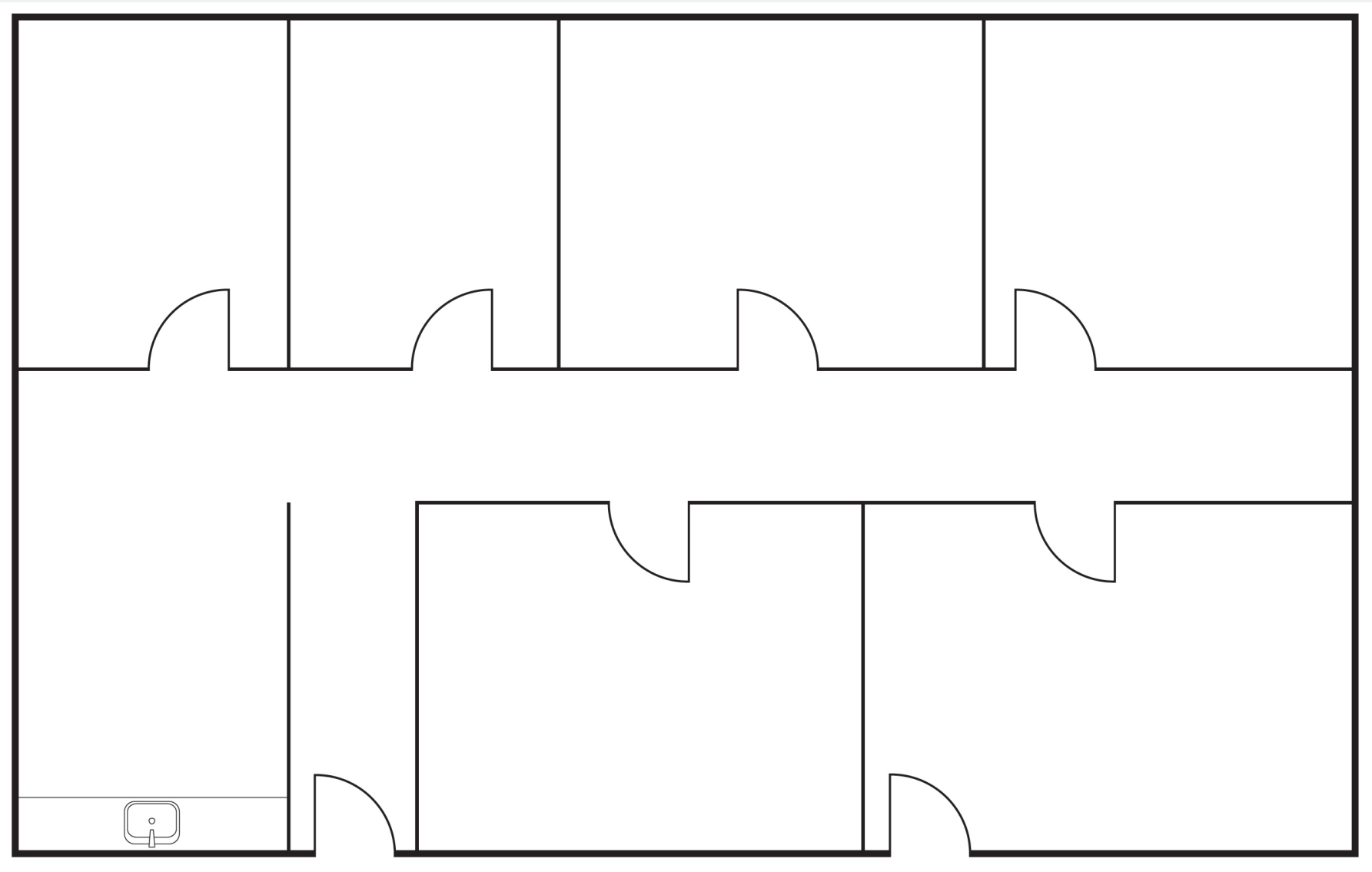
2020 Main Street, Suite 100, Irvine, CA 92614

PROPERTY FEATURES

- Price: \$785,000 (\$499 PSF)
- Size: ±1,574 Square Feet
- Zoning: MUO-Mixed-Use Office
- Parking: 4:1,000 SF - Free and In-Common
- Layout: Reception area, 5 private offices, kitchen area, and common area restrooms
- Association Dues: \$1,078.84 – includes electricity, water, and common area maintenance
- Property Taxes: 1.05187%
- Location: Easy access to the 5 and 405 freeways, and within a 5 minute drive of numerous retail amenities and restaurants, including the Irvine Spectrum Center, Spectrum Crossroads, and Lake Forest Gateway at the Los Olivos Marketplace, Irvine Spectrum Center, Spectrum Crossroads, and Lake Forest Gateway



FLOORPLAN



[CLICK HERE FOR 3D TOUR](#)







Bake Pkwy

Muirlands Blvd

Mercedes-Benz

Ford

KIA

Jeep

NISSAN

VW

HONDA

Chevrolet

IHop

Panera Bread

Starbucks Coffee

Chevron

Shell

Quality

McDonald's

Hilton Garden Inn

BW Best Western Hotels & Resorts

COURTYARD Marriott

5

5

SITE

Lake Forest Dr

Avenida De La Carlota
Laguna Hills Inn
at Irvine Spectrum

Rockfield Blvd

Forest Lanes

Lake Forest Dr

usbank

RH RESTORATION HARDWARE

BEST BUY

McDonald's

DELTA CO

COCO'S Bakery-Restaurant

Shell

Carl's Jr.

BUFFALO WILD WINGS GRILL & BAR

CARmax

Ferrari

MINI

BMW

FedEx

