

The Conrad Group, Inc.
Commercial Real Estate Services

FOR SALE
**Residence/Assisted
Living Facility**

***Sacred Heart
Providence House
363 Bishops Highway
Kingston, MA 02364***



GENERAL PROPERTY INFORMATION:

Building Area:

Providence House (Convent)	32,256+ SF
Lourdes Center:	5,133+ SF
Star of the Sea:	11,248+ SF
Maint. Shed/Annex/Garage:	3,500+ SF
	<u>52,137+ SF</u>

Land Area: 23+ acres

Generator: Kohler 100KW (Propane)

Zoning: R80

Water/Sewer: Well/On-site septic

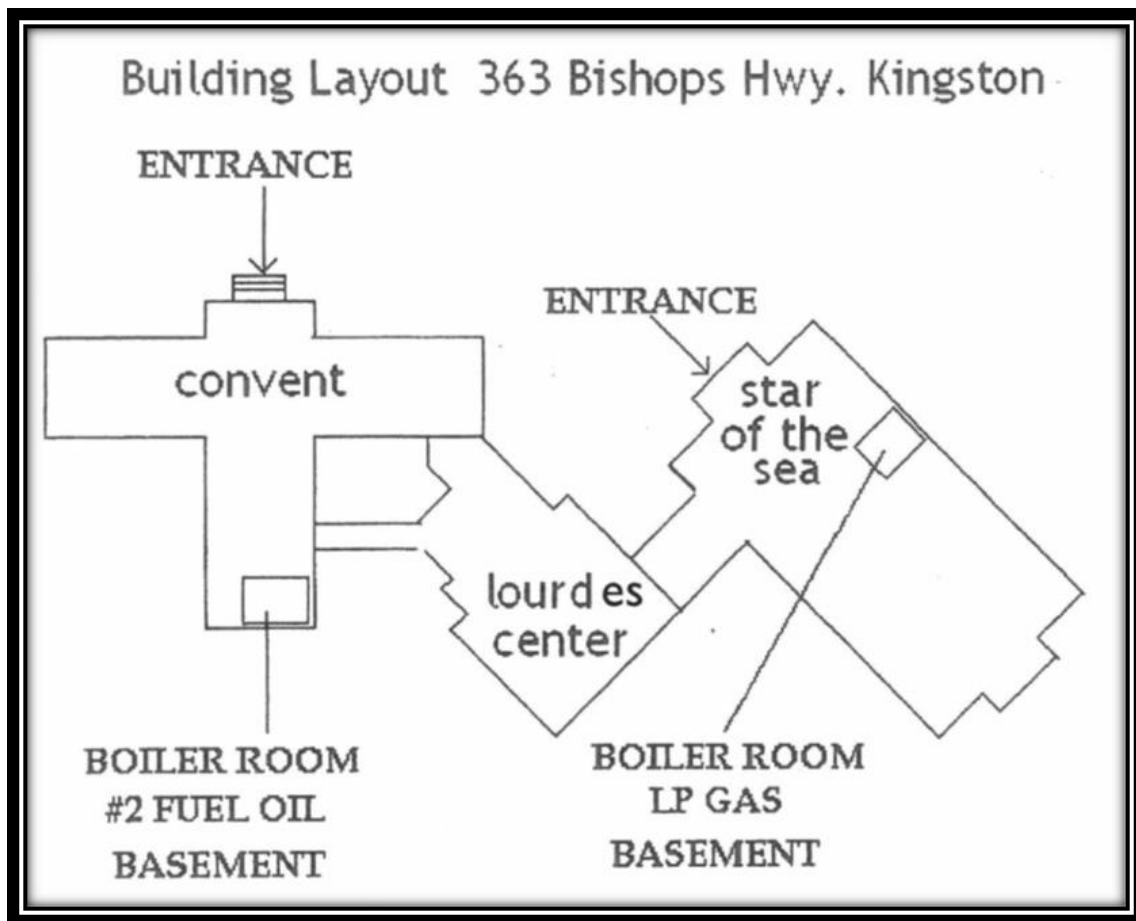
The Conrad Group, Inc.
Commercial Real Estate Services

For additional information:

Jim McEvoy
(781) 249-9225

jhmcevoy@earthlink.net

Disclaimer: All information is from sources deemed reliable, however no representation is made as to its accuracy and same is subject to prior sale, rental or removal from the market without notice.



Building Information:

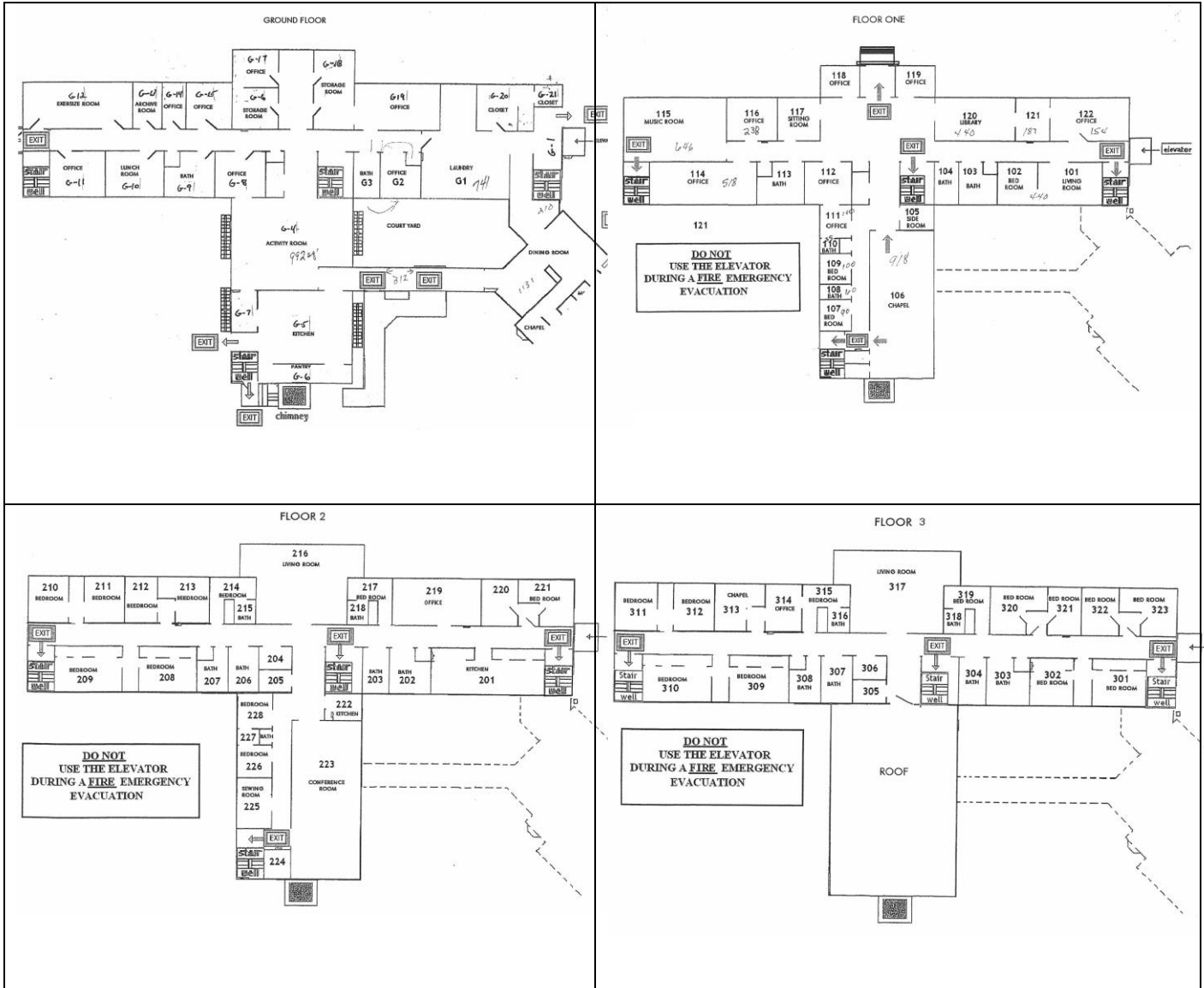
Providence House – Convent:

Construction:	Brick/Masonry
Floors:	Four (4)
Roof:	Primarily tar and gravel
Elevator:	Yes
A/C:	Split systems in some areas
Heat:	Steam; hot water
Fuel:	Oil
Life Safety:	Fire detection system throughout (no automatic sprinkler system)
Rooms:	Twenty six (26) bedrooms, twenty (20) bathrooms
Add'l Features:	Chapel, Kitchen & Pantry, Lunch room, Exercise room, Storage, Offices, Living Room, Music room, Library, Conference room, Sewing room

Disclaimer: All information is from sources deemed reliable, however no representation is made as to its accuracy and same is subject to prior sale, rental or removal from the market without notice.

Providence House – Convent:

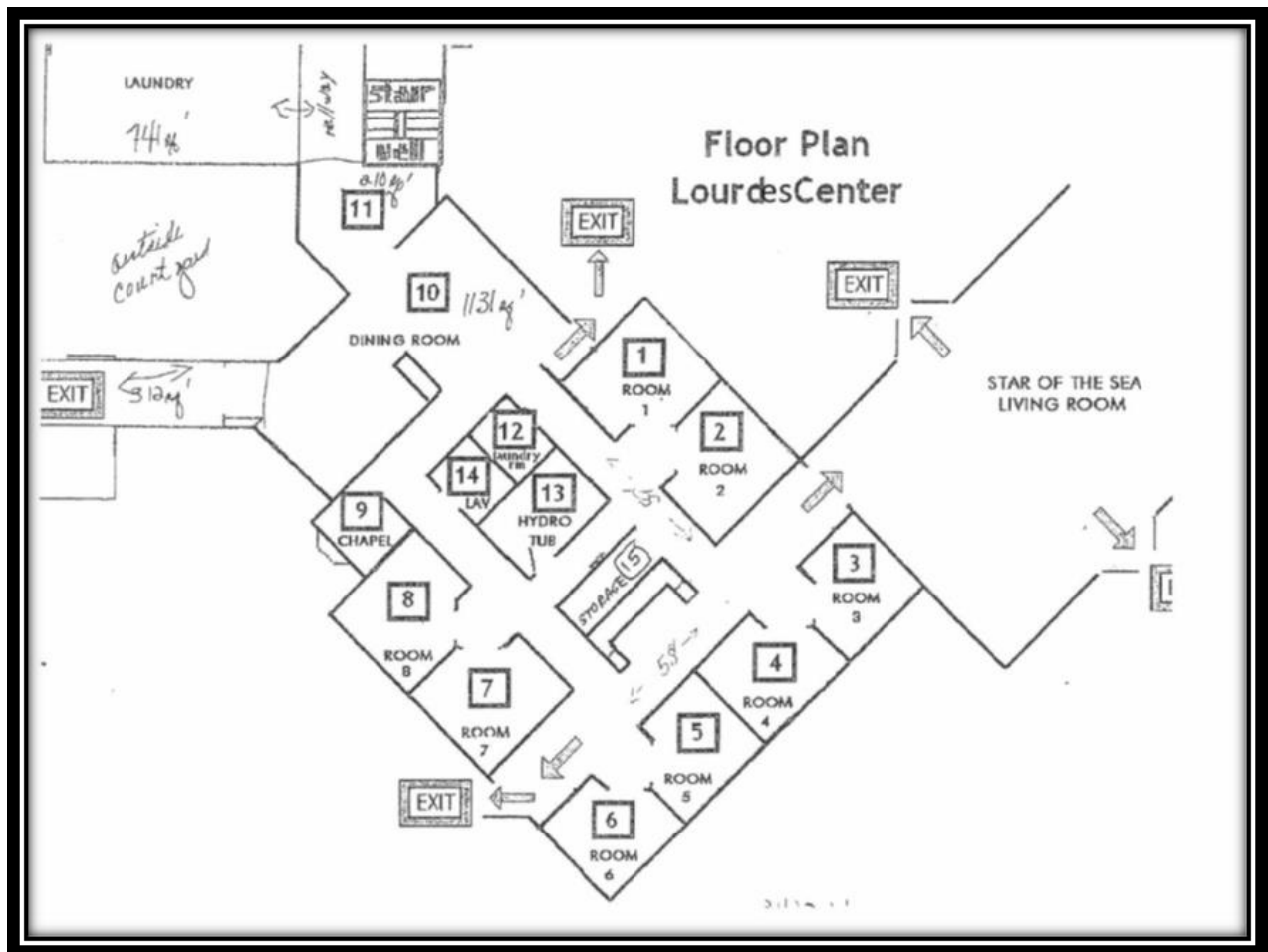
Floor Plans



Building Information:

Lourdes Center: Nursing care/assisted living

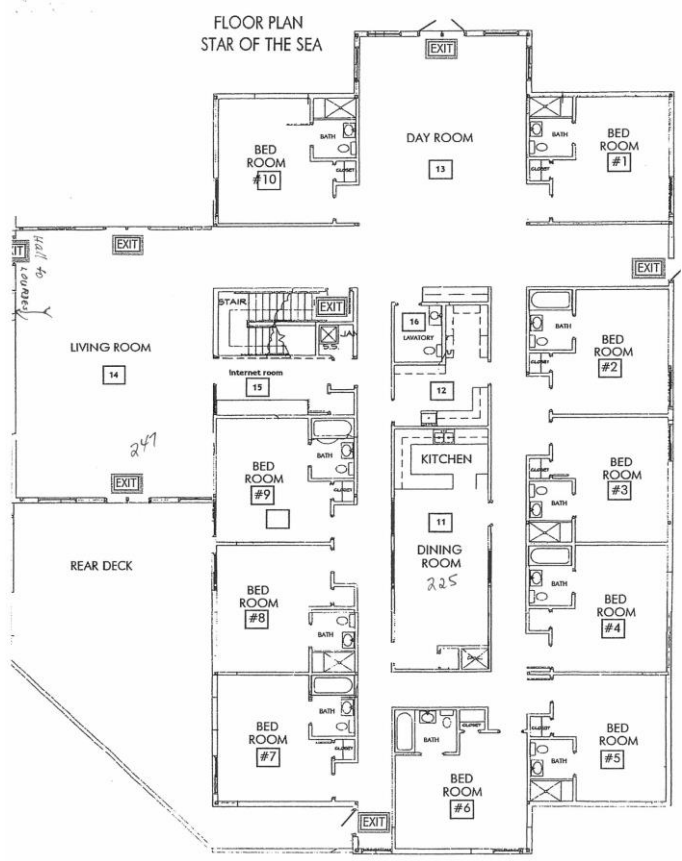
- Floors: One (1)
- Roof: Ballasted rubber membrane
- A/C: Yes
- Heat: Hot water
- Fuel: Oil
- Life Safety: Fire detection system throughout and automatic sprinkler system
- Rooms: Eight (8) bedrooms
- Amenities: Dining room, courtyard, laundry



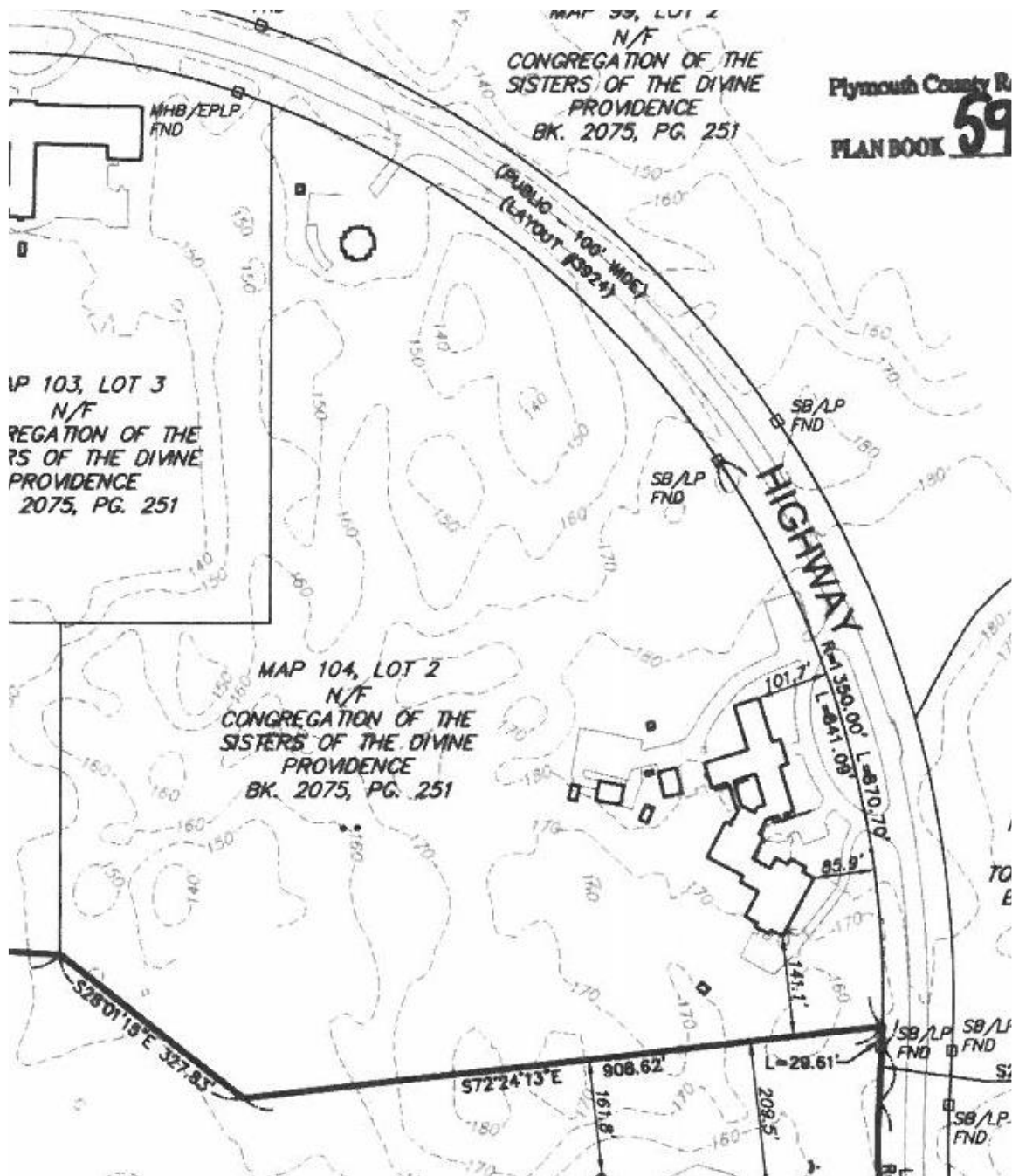
Building Information:

Star of the Sea: Assisted Living

- Floors: One (1) floor
- Roof: Rubber membrane
- A/C: Yes
- Heat: Hot water
- Fuel: Oil
- Life Safety: Fire detection system throughout and automatic sprinkler system
- Rooms: Ten (10) bedrooms
- Amenities: Dining room/kitchen, deck, day room, living room



Site Plan:



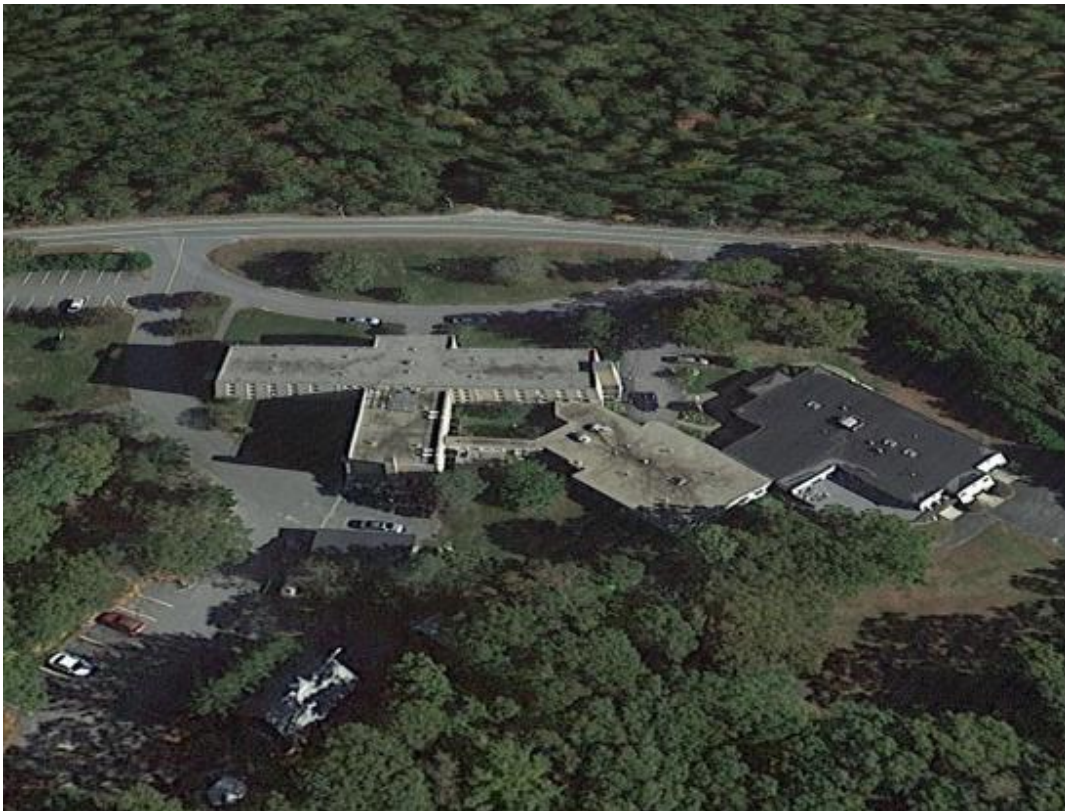
The Conrad Group, Inc.

SACRED HEART Providence House, 363 Bishops Highway, Kingston, MA



Jim McEvoy
(781) 249-9225
jhmcevoy@earthlink.net

Disclaimer: All information is from sources deemed reliable, however no representation is made as to its accuracy and same is subject to prior sale, rental or removal from the market without notice.



SACRED HEART Providence House, 363 Bishops Highway, Kingston, MA



The Conrad Group, Inc.
(781) 249-9225