



**RUSS**  
BUILDING

 CUSHMAN &  
WAKEFIELD

## Welcome to the Russ Building

Since 1927, it has been lovingly maintained and meticulously updated. It has housed generations of San Francisco's biggest dreams, and today, it is ready for yours.



**MODERN OFFICE + ICONIC SETTING**

# Your new address in the heart of the Financial District

With its iconic stature in the Financial District, the “Mighty Russ” is one of San Francisco’s most recognizable landmarks. Thoughtfully upgraded with modern finishes and the amenities today’s teams expect, the Russ Building delivers a dynamic environment where businesses can thrive and grow in a central, vibrant location.



floor plates from  
5,000 - 26,000 SF



move-in ready  
suites available



on-site retail



350-space  
parking garage



bike storage,  
showers & lockers



## Modern Amenities

**Tenant lounge, shared conference rooms, ground-floor coffee lounge, fitness center coming soon**





Let's talk numbers.

1926

Year of Construction

31

Total Stories

93

Energy Star Score

5K-26K

SF Floor Plates

530,000

Total Square Feet

Platinum

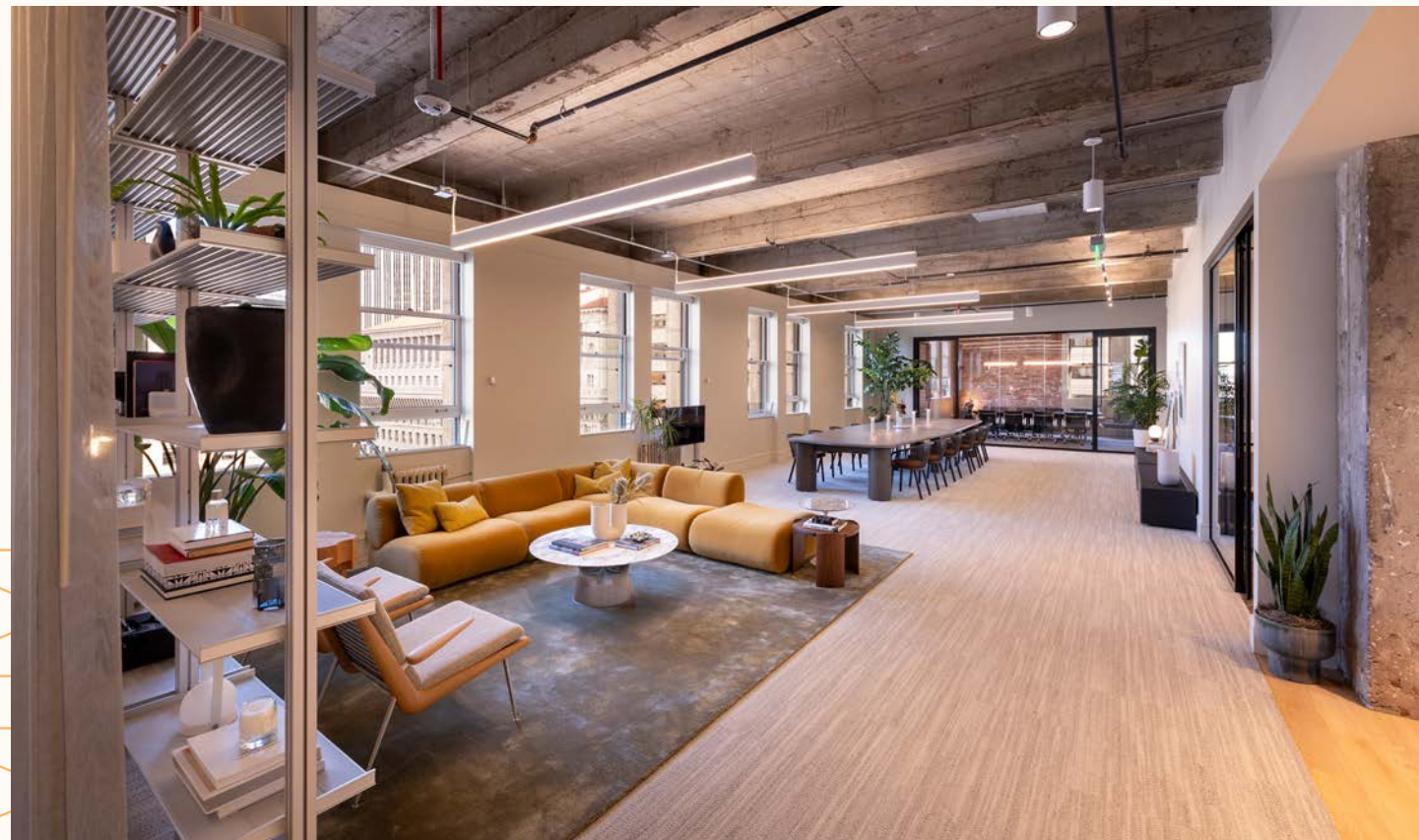
LEED Certification

# Everyday Essentials, Elevated

Tailored to today's workforce, the Russ Building's on-site amenities create a seamless, convenient experience that enhances productivity, collaboration, and everyday comfort.

## ON-SITE AMENITIES INCLUDE:

- **Modern tenant lounge**
- **Shared conference rooms**
- **Ground-floor coffee lounge**
- **On-site retail: Joe & The Juice, Russ Building Barber Shop, Ladle & Leaf**

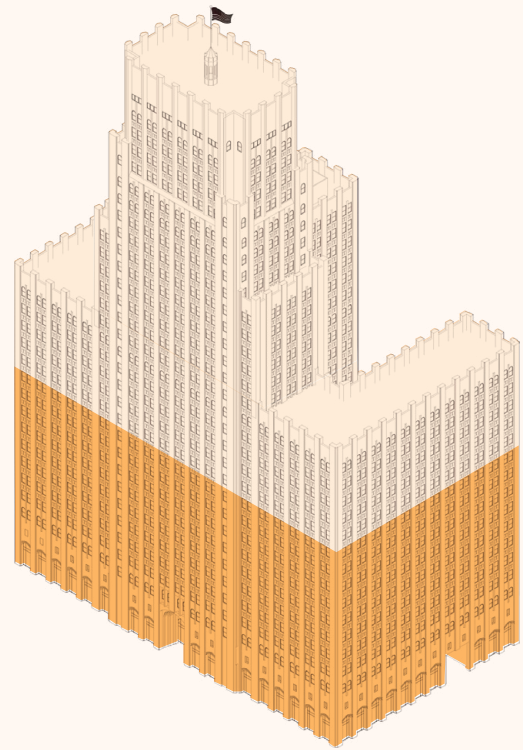


## Fitness Center Coming Soon



# Availabilities

## Low-Rise



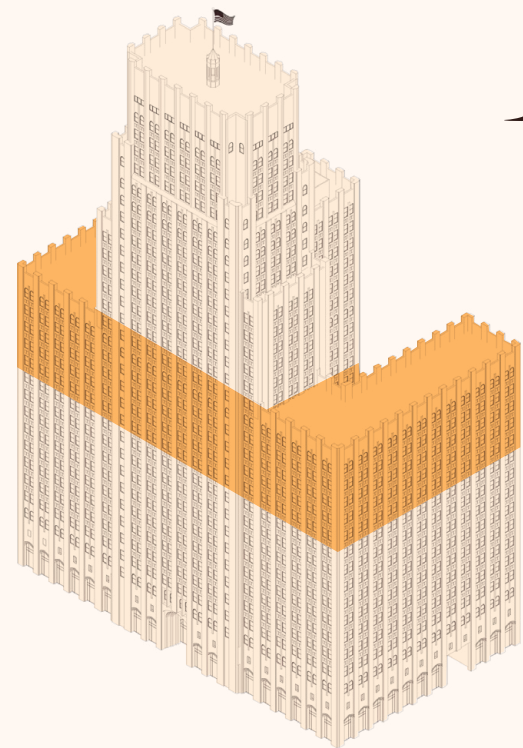
**FLOORS**  
**1-10**

SUITE	SQFT	FLOOR PLAN
455	1,697	<a href="#">View</a>
500	27,456	<a href="#">View</a>
600	2,810	<a href="#">View</a>
620	3,273	<a href="#">View</a>
640	2,139	<a href="#">View</a>
650	5,891	<a href="#">View</a>
725	1,547	<a href="#">View</a>
822	4,105	<a href="#">View</a>
835	1,594	<a href="#">View</a>
840	2,960	<a href="#">View</a>
850	1,906	<a href="#">View</a>



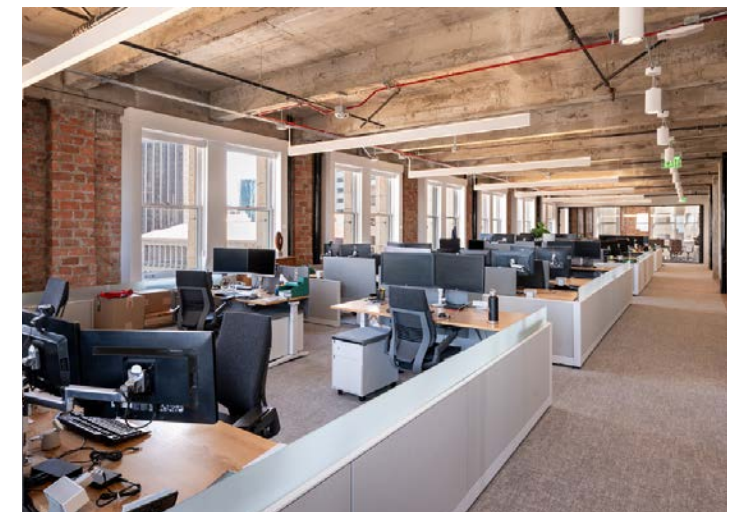
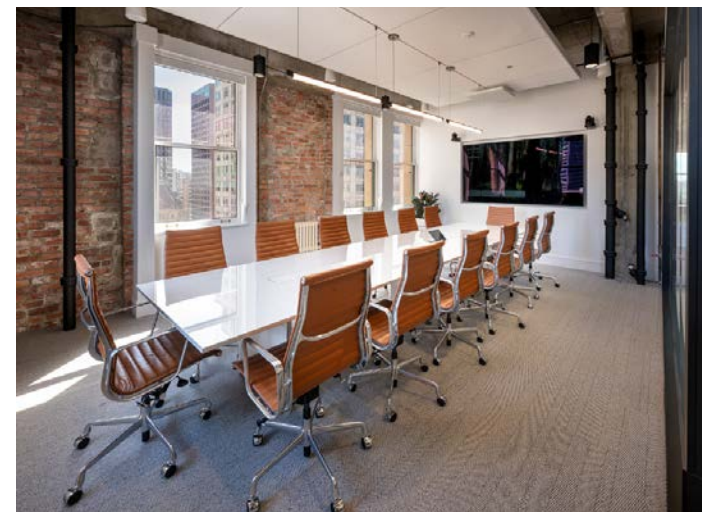
# Availabilities

## Mid-Rise



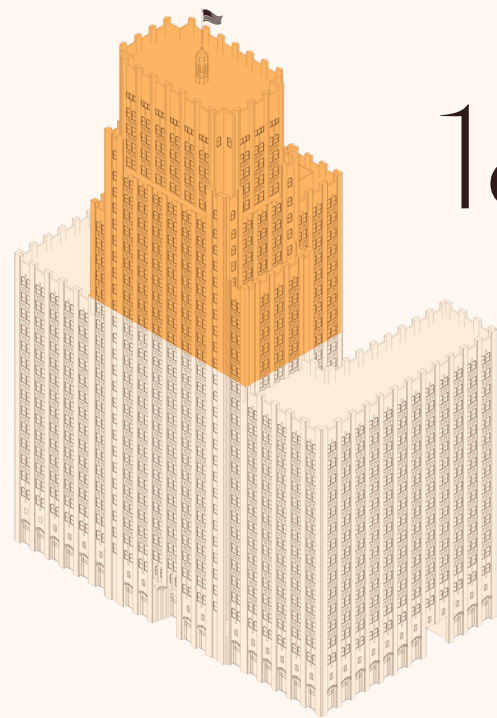
**FLOORS**  
**11-17**

SUITE	SQFT	FLOOR PLAN
1101	1,526	<a href="#">View</a>
1140	457	<a href="#">View</a>
1210	7,993	<a href="#">View</a>
1212	663	<a href="#">View</a>
1230	3,819	<a href="#">View</a>
1430	3,727	<a href="#">View</a>
1440	11,829	<a href="#">View</a>
1500	26,425	<a href="#">View</a>
1700	12,323	<a href="#">View</a>



# Availabilities

## High-Rise



**FLOORS**  
**18-31**

SUITE	SQFT	FLOOR PLAN
1820	3,704	<a href="#">View</a>
1830	4,029	<a href="#">View</a>
1840	3,748	<a href="#">View</a>
1900	11,323	<a href="#">View</a>
2000	11,434	<a href="#">View</a>
2300	6,620	<a href="#">View</a>
2400	6,630	<a href="#">View</a>
2700	6,628	<a href="#">View</a>
2800	6,021	<a href="#">View</a>
2900	5,659	<a href="#">View</a>
3000	5,659	<a href="#">View</a>
3100	5,659	<a href="#">View</a>





# RUSS

BUILDING



Mark Anderson

**Vice Chairman**

[mark.anderson@cushwake.com](mailto:mark.anderson@cushwake.com)

+1 (415) 713-1014

Lic. #01325399

Danny Pickard

**Director**

[danny.pickard@cushwake.com](mailto:danny.pickard@cushwake.com)

+1 (415) 773-3572

Lic. #01975977

Elena Saccone

**Director**

[elena.saccone@cushwake.com](mailto:elena.saccone@cushwake.com)

+1 (630) 699-9687

Lic. #02151049

