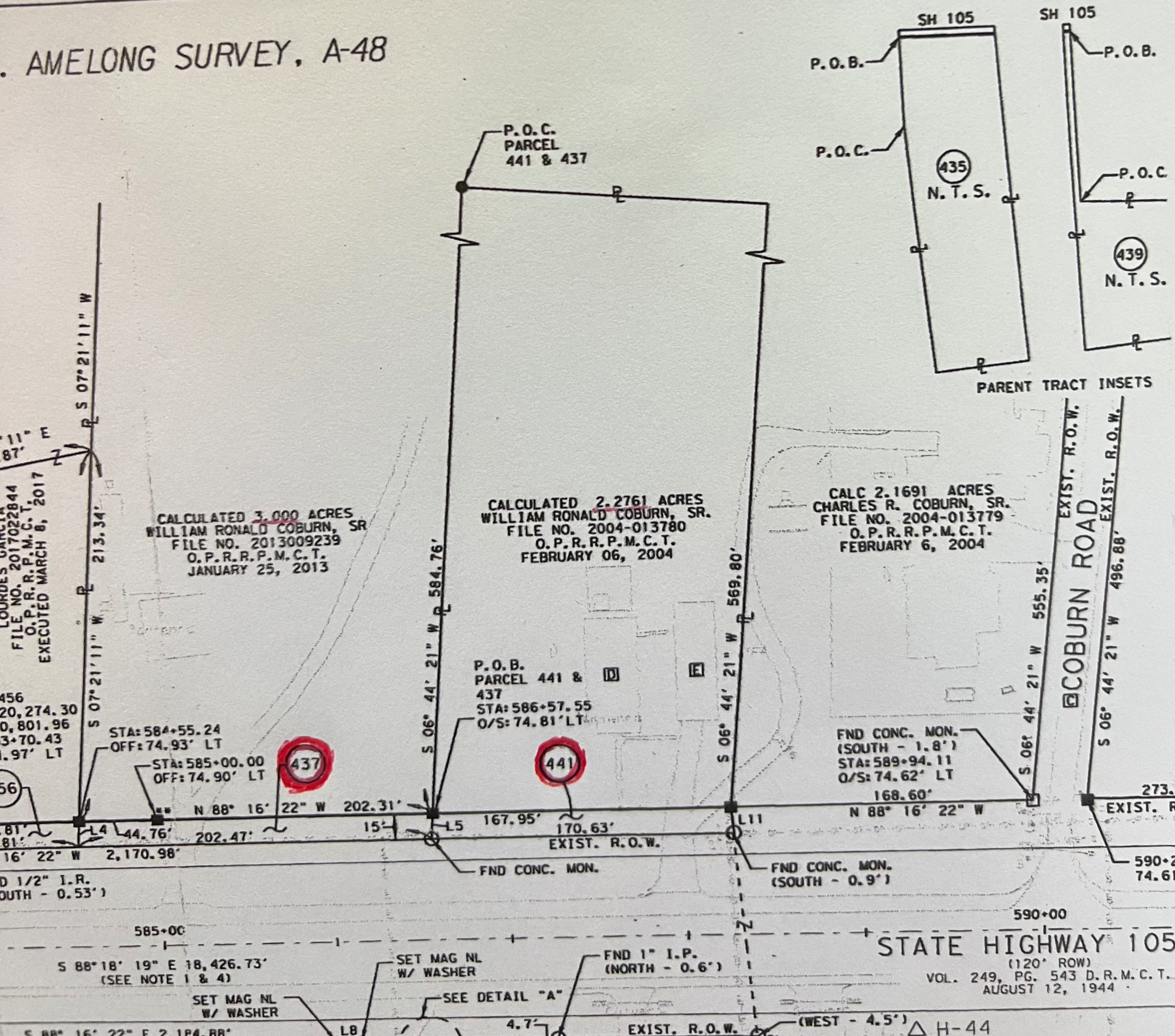


AMELONG SURVEY, A-48



LOURDES GARCIA
FILE NO. 2017022844
O.P.R.R.P.M.C.T.
EXECUTED MARCH 8, 2017

456
20,274.30
0,801.96
3+70.43
1.97' LT

STA: 584+55.24
OFF: 74.93' LT

STA: 585+00.00
OFF: 74.90' LT

P.O.B. PARCEL 441 & 437
STA: 586+57.55
O/S: 74.81' LT

FND CONC. MON.
(SOUTH - 1.8')
STA: 589+94.11
O/S: 74.62' LT

FND CONC. MON.
(SOUTH - 0.9')

STATE HIGHWAY 105
(120' ROW)
VOL. 249, PG. 543 D.R.M.C.T.
AUGUST 12, 1944

S 88° 16' 22" E 2,184.88'

EXIST. R.O.W. (WEST - 4.5')

H-44