

550 PROFESSIONAL BUILDING

550 E BOUGHTON ROAD, BOLINGBROOK, IL 60440

PROFESSIONAL OFFICE & MEDICAL SPACE FOR LEASE



OFFERING SUMMARY

Available RSF: 1,150 - 1,977 RSF

Year Built: 1986

Parking Ratio: 4.0/1,000 SF Ratio

Access: 24-7 Access

Utilities: Separately Metered

Lease Rate: \$19.50 PSF (MG)

PROPERTY HIGHLIGHTS

- Monument Signage Available
- Turn-Key Medical Space Available
- Minutes from Shopping and Expressway Access

JBSCRE.COM | 650 E DEVON AVE, SUITE 105, ITASCA, IL 60143 | 312.462.1020

JASON SHIBATA
PARTNER
312.462.1022
JASON@JBSCRE.COM

BRIAN SILVERMAN
PARTNER
312.462.1023
BRIAN@JBSCRE.COM

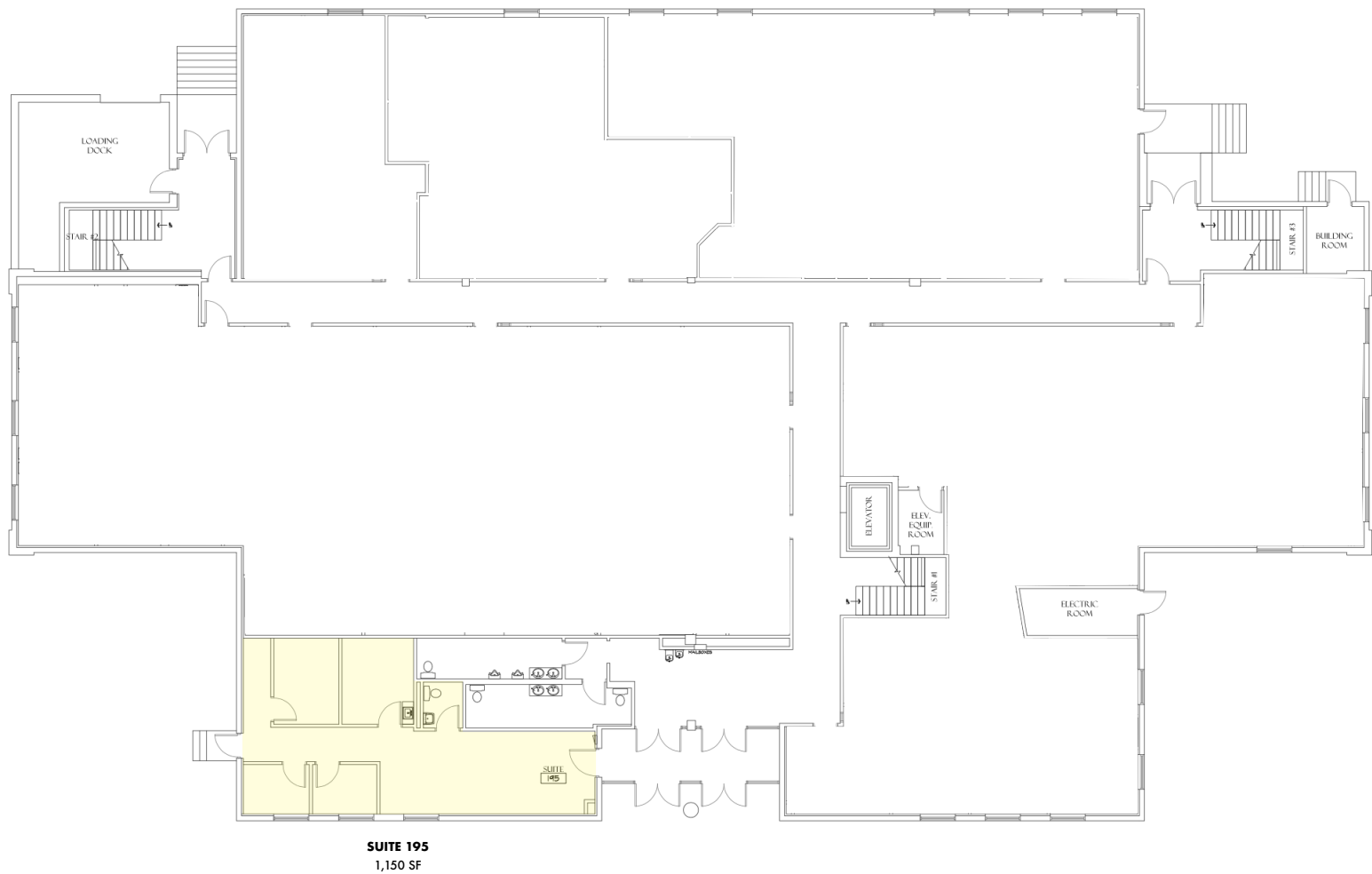
ALL INFORMATION IS DEEMED TO BE RELIABLE BUT NOT GUARANTEED



550 PROFESSIONAL BUILDING

550 E BOUGHTON ROAD, BOLINGBROOK, IL 60440

FIRST FLOOR



SPACE	LEASE RATE	SIZE (SF)	COMMENTS
195	\$19.50 PSF (MG)	1,150 SF	<ul style="list-style-type: none">In-Suite RestroomPrivate Entrance

JBSCRE.COM | 650 E DEVON AVE, SUITE 105, ITASCA, IL 60143 | 312.462.1020

JASON SHIBATA
PARTNER
312.462.1022
JASON@JBSCRE.COM

BRIAN SILVERMAN
PARTNER
312.462.1023
BRIAN@JBSCRE.COM

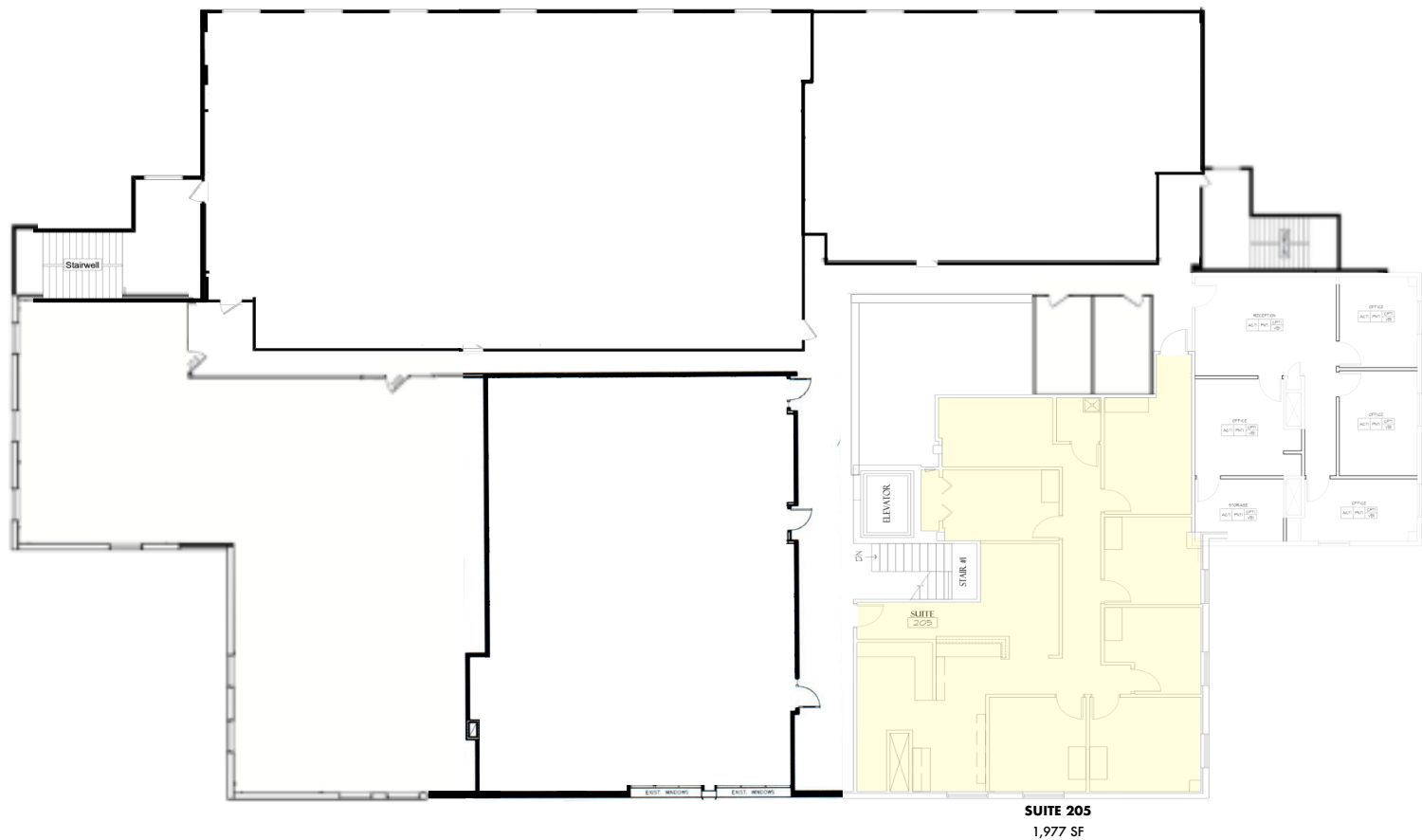
ALL INFORMATION IS DEEMED TO BE RELIABLE BUT NOT GUARANTEED



550 PROFESSIONAL BUILDING

550 E BOUGHTON ROAD, BOLINGBROOK, IL 60440

SECOND FLOOR

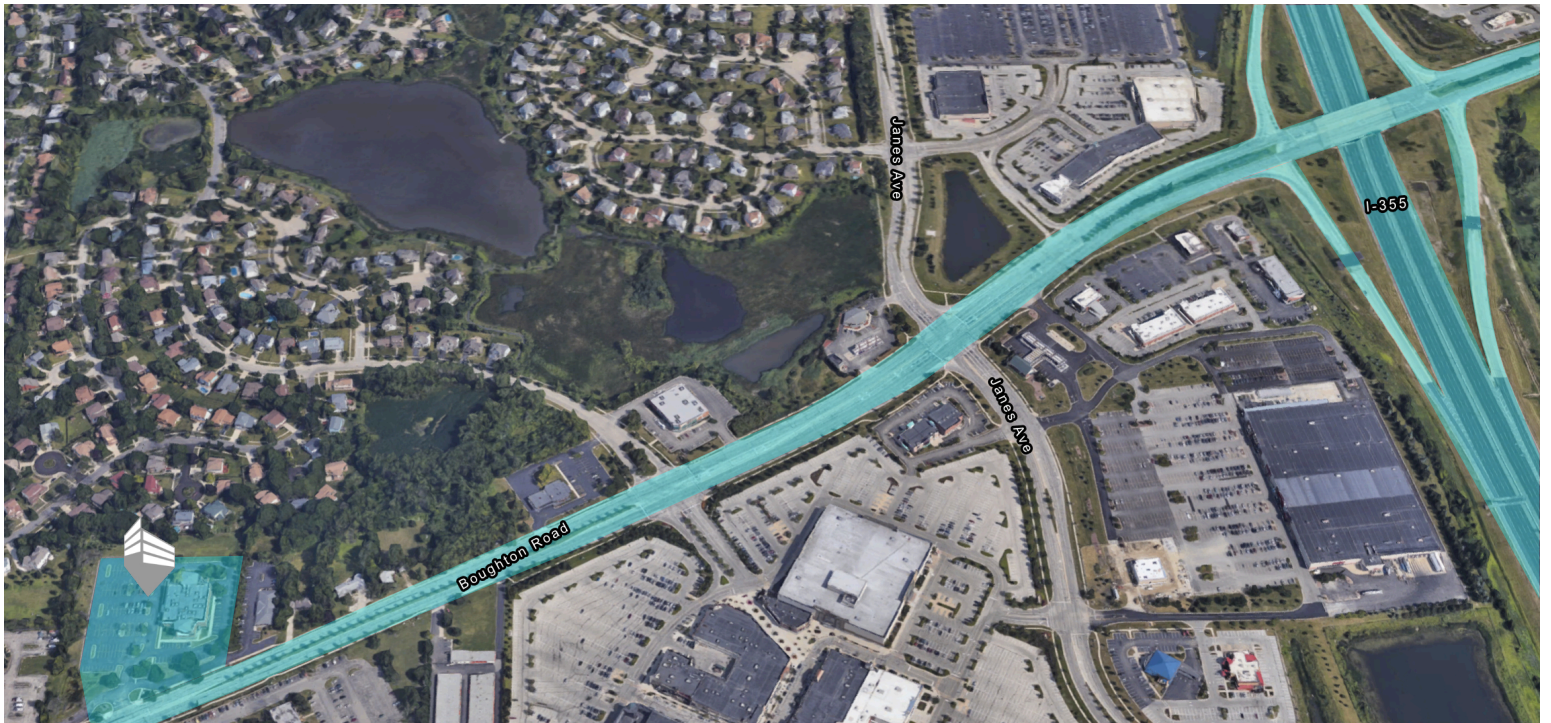
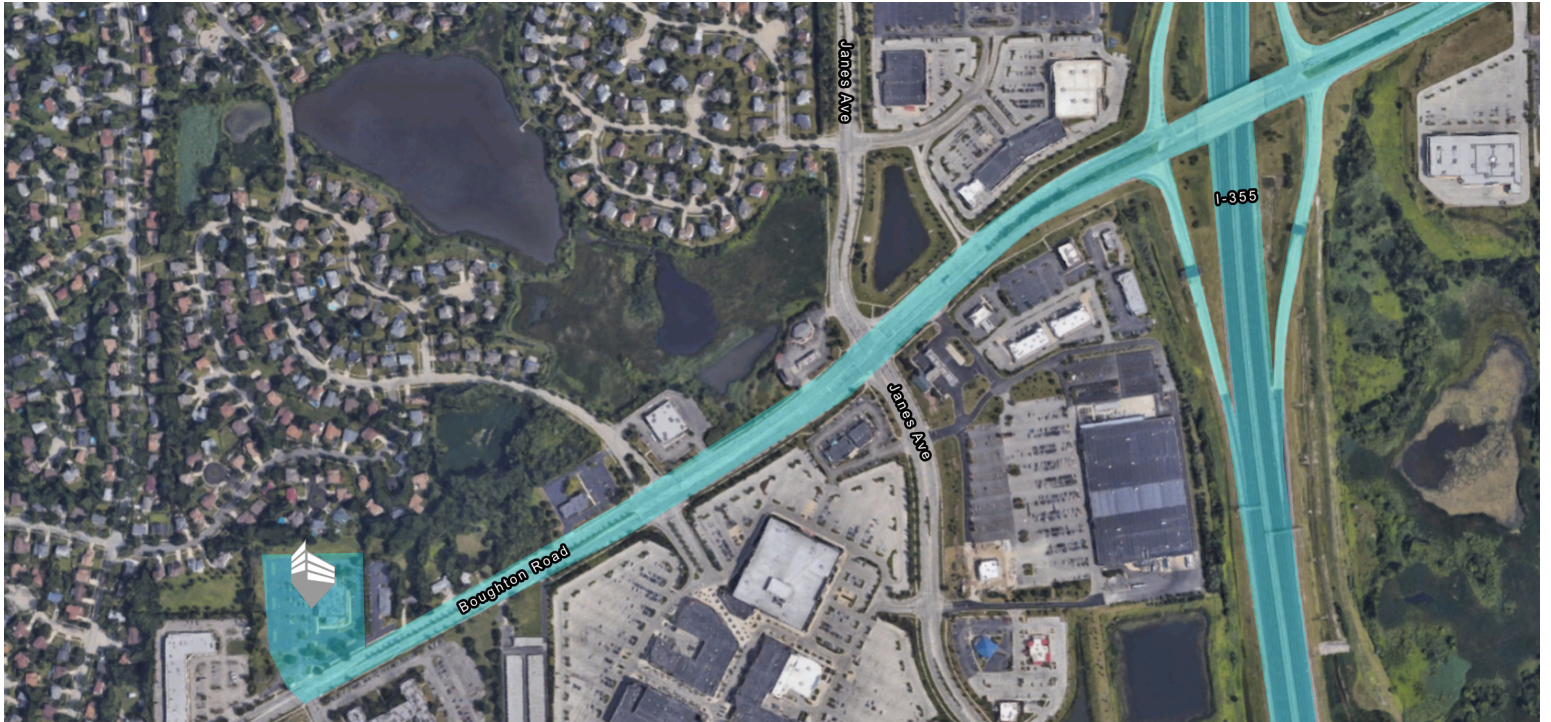


SPACE	LEASE RATE	SIZE (SF)	COMMENTS
205	\$19.50 PSF (MG)	1,977 SF	VACANT

550 PROFESSIONAL BUILDING

550 E BOUGHTON ROAD, BOLINGBROOK, IL 60440

LOCATION MAPS



JBSCORE.COM | 650 E DEVON AVE, SUITE 105, ITASCA, IL 60143 | 312.462.1020

JASON SHIBATA
PARTNER
312.462.1022
JASON@JBSCORE.COM

BRIAN SILVERMAN
PARTNER
312.462.1023
BRIAN@JBSCORE.COM

ALL INFORMATION IS DEEMED TO BE RELIABLE BUT NOT GUARANTEED

