



23420 WOODWARD AVE

Ferndale, MI 48220



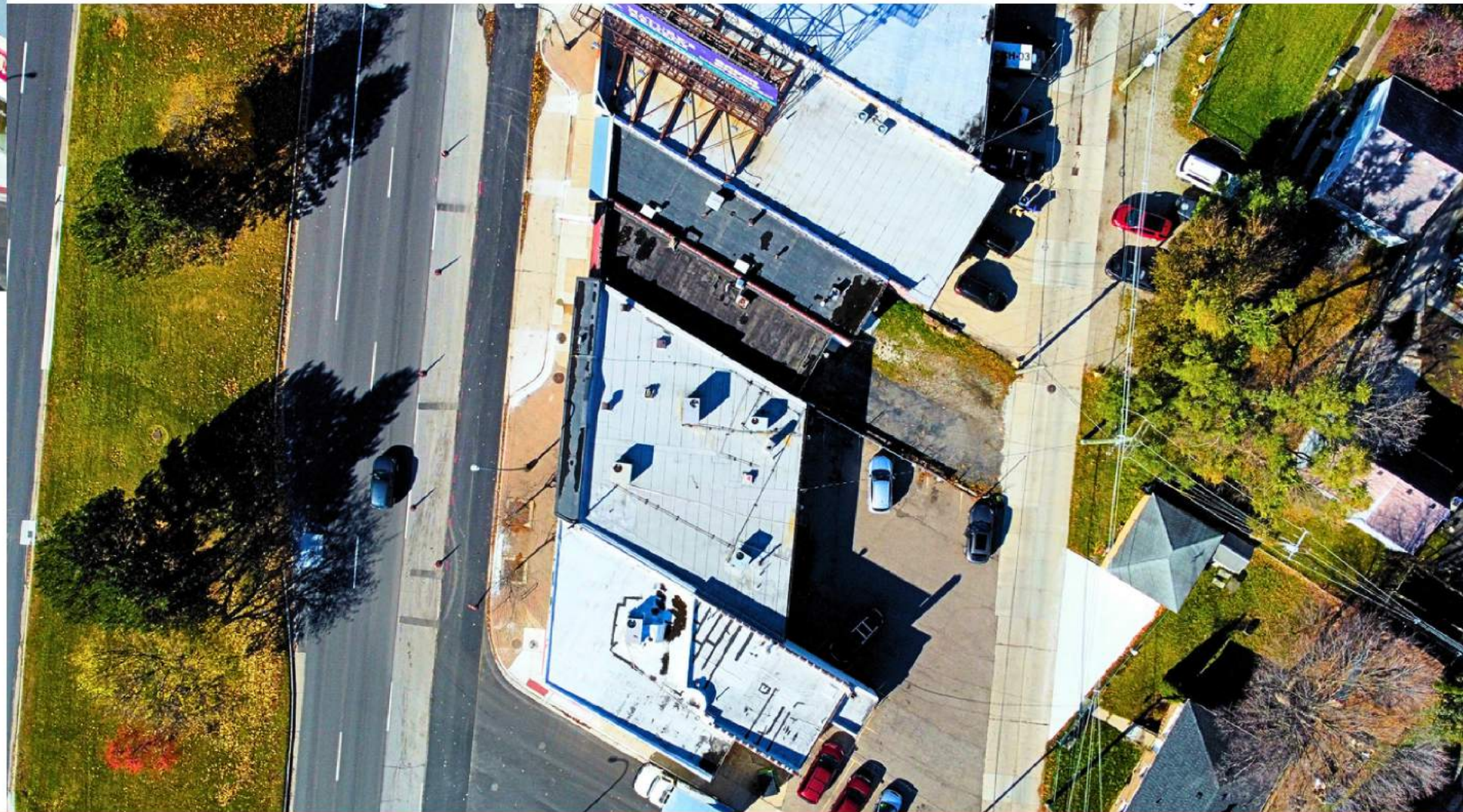
Gary David - (313)590-5806 - gary@gdres.co



SCAN QR CODE FOR
360° INTERIOR VIEW
+ ADDITIONAL PHOTOS

PROPERTY DETAILS

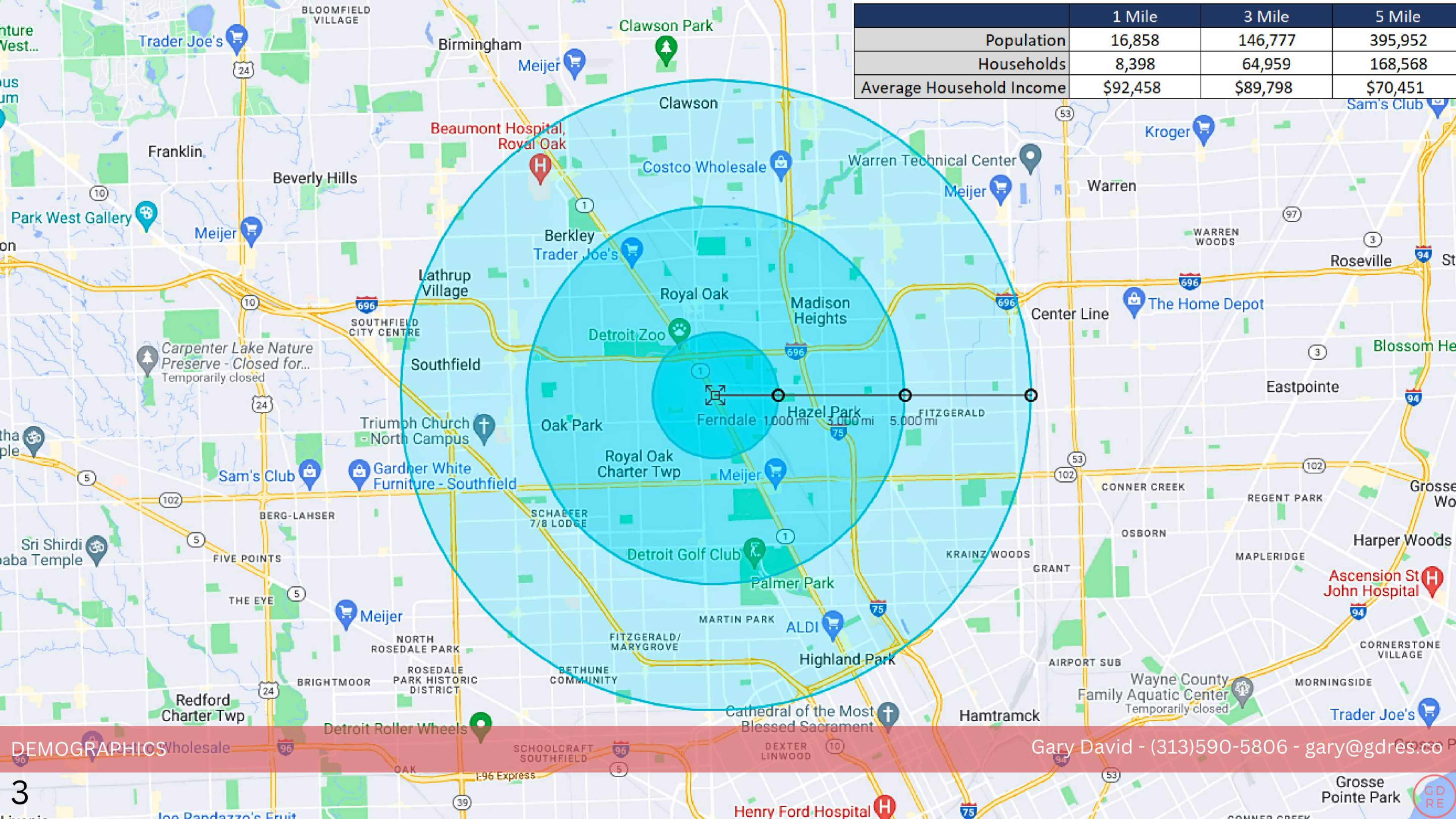
PROPERTY ADDRESS: 23420 Woodward Ave, Ferndale, MI 48220
SIZE: 1,450 SF
PARKING: 4 designated spaces in rear - street parking in front
ZONED: C-3
ASKING RENT: \$16.50/sf MG



SUMMARY

Gary David - (313)590-5806 - gary@gdres.co

	1 Mile	3 Mile	5 Mile
Population	16,858	146,777	395,952
Households	8,398	64,959	168,568
Average Household Income	\$92,458	\$89,798	\$70,451



DEMOGRAPHICS

Gary David - (313)590-5806 - gary@gdres.co



Disclosure: The information contained herein has been obtained from a source believed to be reliable. However, we make no representations or warranties as to the accuracy or completeness of the information. It is the responsibility of the recipient to independently verify the information before making any purchase or lease decisions.

