

158

RIVINGTON STREET LOWER EAST SIDE, NYC

Between Clinton & Suffolk Streets

RETAIL FOR LEASE



APPROXIMATE SIZE

Space A: 750 SF
Space B: 750 SF

POSSESSION

Immediate

ASKING RENT

~~Space A: \$8,000/Month~~ Reduced

Space A: \$7,000/Month

~~Space B: \$8,000/Month~~ Reduced

Space B: \$7,000/Month

TERM

10-15 Years

FRONTAGE

15 FT

COMMENTS

- Move-in ready boutique retail space
- Previously "Alife" clothing and streetwear store
- 18+ ft ceiling heights
- Unique private outdoor patio space
- Full basement with high ceilings
- Strong Lower East Side corridor

NEIGHBORS

Garfunkel's • Sixty Three Clinton • Ginger and Lemongrass • WhitFit • Pig and Khao • Shake Shack • Donnybrook • Birria LES

TRANSPORTATION



JAMES FAMULARO

President
646.658.7373
jfamularo@meridiancapital.com

JACOB MAYER

Director
212.468.5926
jmayer@meridiancapital.com

CORY RYWALT

Associate
212.468.5973
crywalt@meridiancapital.com



MERIDIAN
RETAIL LEASING

All information supplied is from sources deemed reliable and is furnished subject to errors, omissions, modifications, removal of the listing from sale or lease, and to any listing conditions, including the rates and manner of payment of commissions for particular offerings imposed by Meridian Capital Group. This information may include estimates and projections prepared by Meridian Capital Group with respect to future events, and these future events may or may not actually occur. Such estimates and projections reflect various assumptions concerning anticipated results. While Meridian Capital Group believes these assumptions are reasonable, there can be no assurance that any of these estimates and projections will be correct. Therefore, actual results may vary materially from these estimates and projections. Any square footage dimensions set forth are approximate.



INTERIOR | SPACE A

JAMES FAMULARO

President
646.658.7373
jfamularo@meridiancapital.com

JACOB MAYER

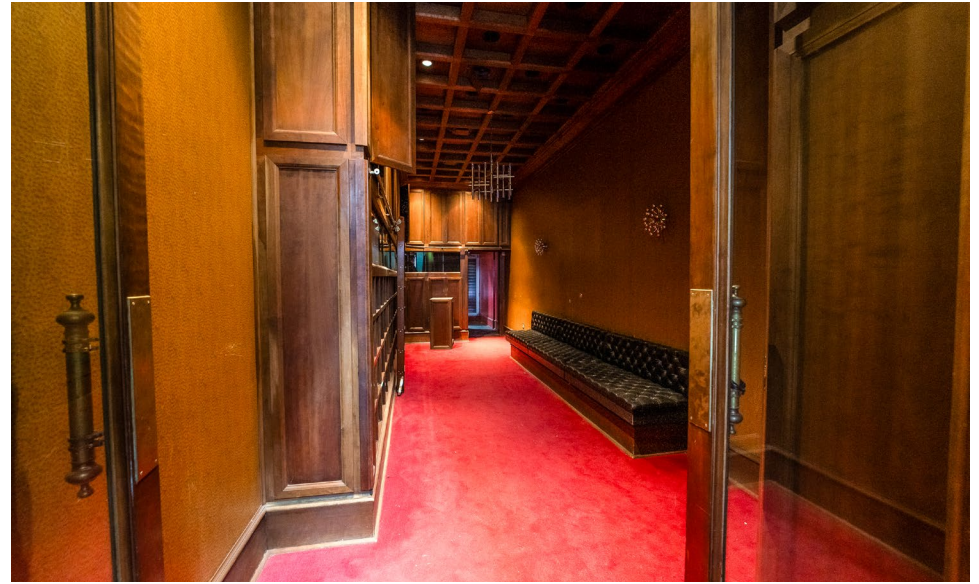
Director
212.468.5926
jmayer@meridiancapital.com

CORY RYWALT

Associate
212.468.5973
crywalt@meridiancapital.com



MERIDIAN
RETAIL LEASING



INTERIOR | SPACE B

JAMES FAMULARO

President
646.658.7373
jfamularo@meridiancapital.com

JACOB MAYER

Director
212.468.5926
jmayer@meridiancapital.com

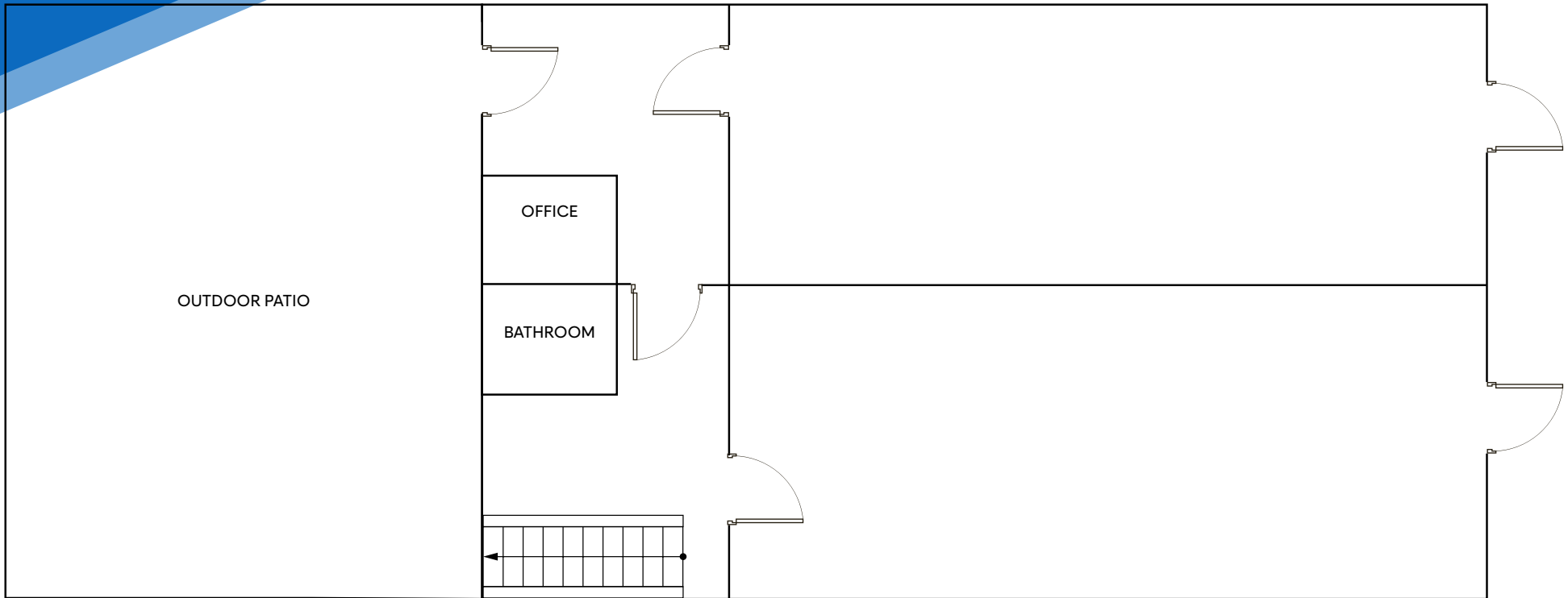
CORY RYWALT

Associate
212.468.5973
crywalt@meridiancapital.com



MERIDIAN
RETAIL LEASING

FLOOR PLAN



JAMES FAMULARO

President
646.658.7373
jfamularo@meridiancapital.com

JACOB MAYER

Director
212.468.5926
jmayer@meridiancapital.com

CORY RYWALT

Associate
212.468.5973
crywalt@meridiancapital.com

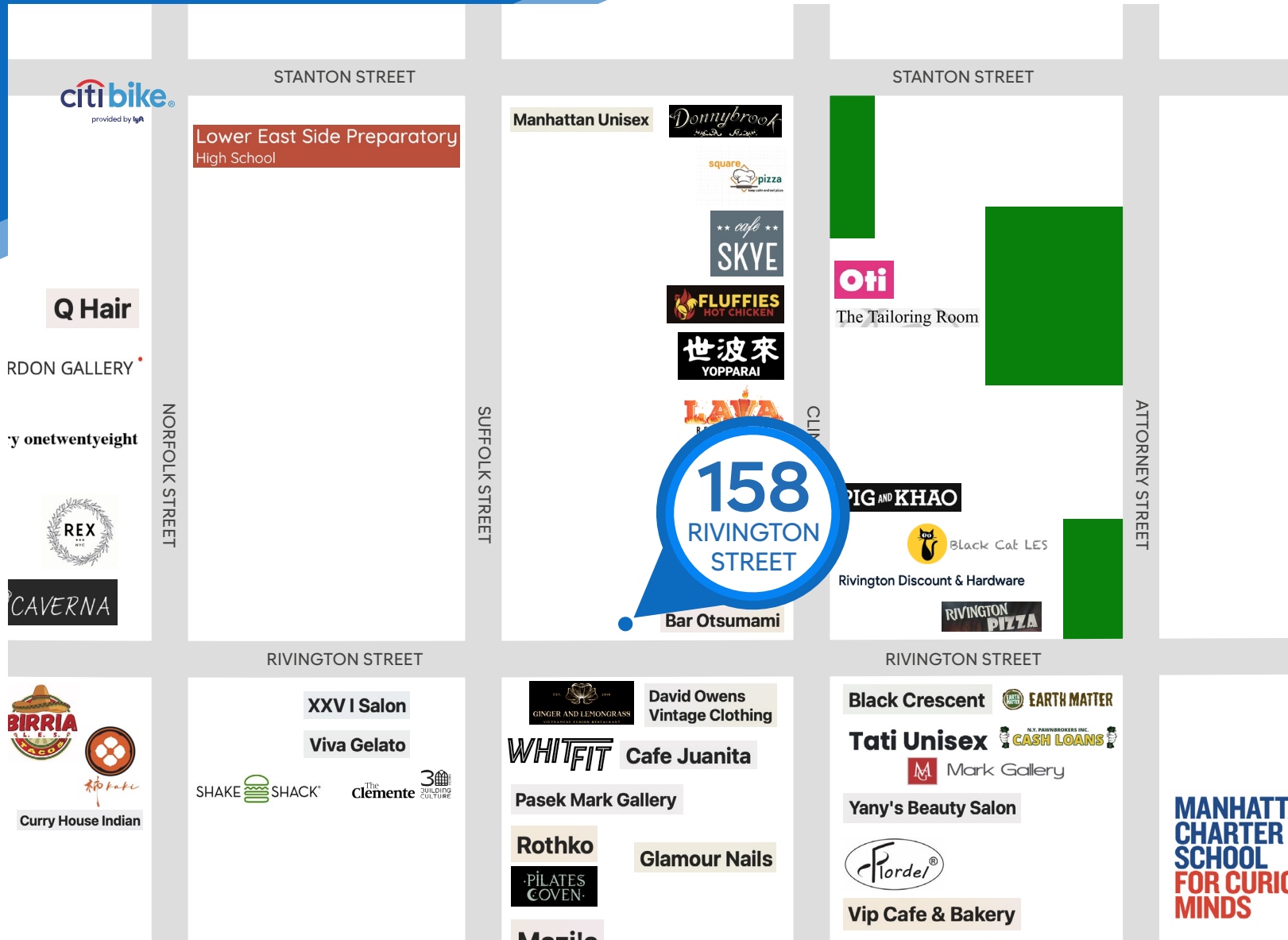


MERIDIAN
RETAIL LEASING

158 RIVINGTON STREET

LOWER EAST SIDE, NYC | Between Clinton and Suffolk Streets

RETAIL FOR LEASE



FLOOR PLAN

JAMES FAMULARO

President
646.658.7373
jfamularo@meridiancapital.com

JACOB MAYER

Director
212.468.5926
jmayer@meridiancapital.com

CORY RYWALT

Associate
212.468.5973
crywalt@meridiancapital.com



MERIDIAN
RETAIL LEASING

All information supplied is from sources deemed reliable and is furnished subject to errors, omissions, modifications, removal of the listing from sale or lease, and to any listing conditions, including the rates and manner of payment of commissions for particular offerings imposed by Meridian Capital Group. This information may include estimates and projections prepared by Meridian Capital Group with respect to future events, and these future events may or may not actually occur. Such estimates and projections reflect various assumptions concerning anticipated results. While Meridian Capital Group believes these assumptions are reasonable, there can be no assurance that any of these estimates and projections will be correct. Therefore, actual results may vary materially from these estimates and projections. Any square footage dimensions set forth are approximate.