

GROUND FLOOR AVAILABILITY
MEDICAL / OFFICE / RETAIL USE

864 South Robertson

BEVERLY HILLS, CA



**SPACE
AVAILABLE**

NEWMARK





DETAILS

SIZE	Suite 100/101: $\pm 1,547$ RSF (Divisible to ± 750 RSF)
RATE	\$3.95 PSF/Mo, MG
TERM	3-15 years
AVAILABILITY	Immediate
USE	Medical/Office/Retail/Fitness
PARKING	1.0/1,000 SF \$150/car

Discover the perfect location for your medical office, retail space, or fitness studio on Robertson Blvd! This ground floor suite offers an exceptional opportunity with its prime frontage and visibility. Whether you're looking to expand your practice, or open a boutique, this versatile space caters to your business needs.

Key Features:

- Walking distance to S Beverly Drive shops and restaurants
- High visibility with direct frontage on Robertson Blvd
- Exclusive building signage available for enhanced brand recognition
- Flexible layout options to accommodate various business requirements
- Ample foot traffic in a bustling commercial area



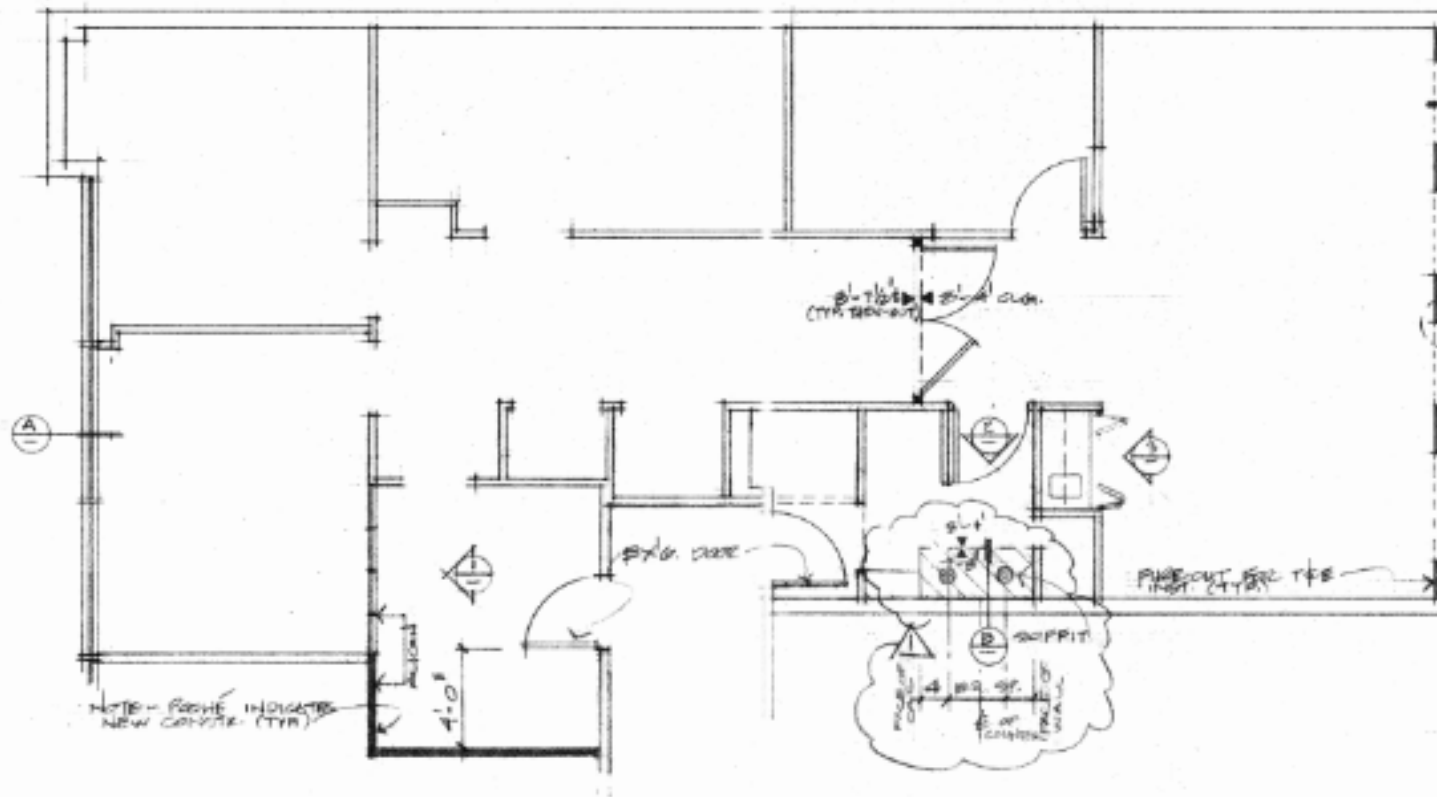
FLOOR PLAN | SUITE 100/101: ±1,547 RSF (Divisible to ±750 RSF)

EXISTING FLOOR PLAN

- Four (4) offices/exam rooms
- Waiting room
- Private in-suite restroom
- Excellent frontage for retail



Robertson Blvd.



Parking
Garage

SUITE IMAGES | SUITE 100/101: ±1,547 RSF (Divisible to ±750 RSF)



This aerial map of Beverly Hills features numerous business logos and names overlaid on the city grid. The logos include Cedars Sinai, Beverly Center, Lawry's The Prime Rib, Spice Affair, Wells Fargo, Chase, 864 South Robertson (with a photo of the building), Vendome Wine & Spirits, Tagine, Audi, Juice Crafters, Baby Breads Bakeshop, Starbucks, Dr. Sandwich, Sasabune, La Provence, David Appel Furs - A Furrier, Bentley, FedEx, Toppings Frozen Yogurt, and Natalee Thai Cuisine. A purple dot is placed on W Olympic Blvd, near the intersection with S Robertson Blvd. Major streets labeled on the map include N Robertson Blvd, Wilshire Blvd, W Olympic Blvd, and S Robertson Blvd.



AREA NEIGHBORS



Natalee Thai



Juice Crafters



Vendome



Baby Bea's



Bentley



La Provence

La Provence
Patisserie



Toppings



David Appel Furs

**GROUND FLOOR AVAILABILITY
MEDICAL / OFFICE / RETAIL USE**

864 South Robertson

BEVERLY HILLS, CA



Corporate License #01355491

Procuring broker shall only be entitled to a commission, calculated in accordance with the rates approved by our principal only if such procuring broker executes a brokerage agreement acceptable to us and our principal and the conditions as set forth in the brokerage agreement are fully and unconditionally satisfied. Although all information furnished regarding property for sale, rental, or financing is from sources deemed reliable, such information has not been verified and no express representation is made nor is any to be implied as to the accuracy thereof and it is submitted subject to errors, omissions, change of price, rental or other conditions, prior sale, lease or financing, or withdrawal without notice and to any special conditions imposed by our principal.

NEWMARK



**COMMERCIAL
ASSET GROUP**

FOR MORE INFO, PLEASE CONTACT:

STEVEN SALAS
NEWMARK
Senior Managing Director
t 310-407-6569
steven.salas@nmrk.com
CA RE Lic. #01232955

DANIEL CHIPRUT
CAG
Executive Vice President
t 310-800-7955
daniel@cag-re.com
CA RE Lic. #01808709

ADAM FUNK
CAG
Managing Director
t 310-666-0124
afunk@cagre.com
CA RE Lic. #01876070