

5061 Kennedy Road | Forest Park, GA 30297



INDUSTRIAL SPACE FOR LEASE

Available Space:

- ▶ Total SF Available: 21,876 SF
- ▶ Office SF: ±3,000 SF
- ▶ Clear Height: 20'
- ▶ Dock High Doors: 2

Property Features:

- ▶ Brick & Block Construction
- ▶ Zoning: Heavy Industrial
- ▶ LED Lights
- ▶ Less than 1 mile to I-75

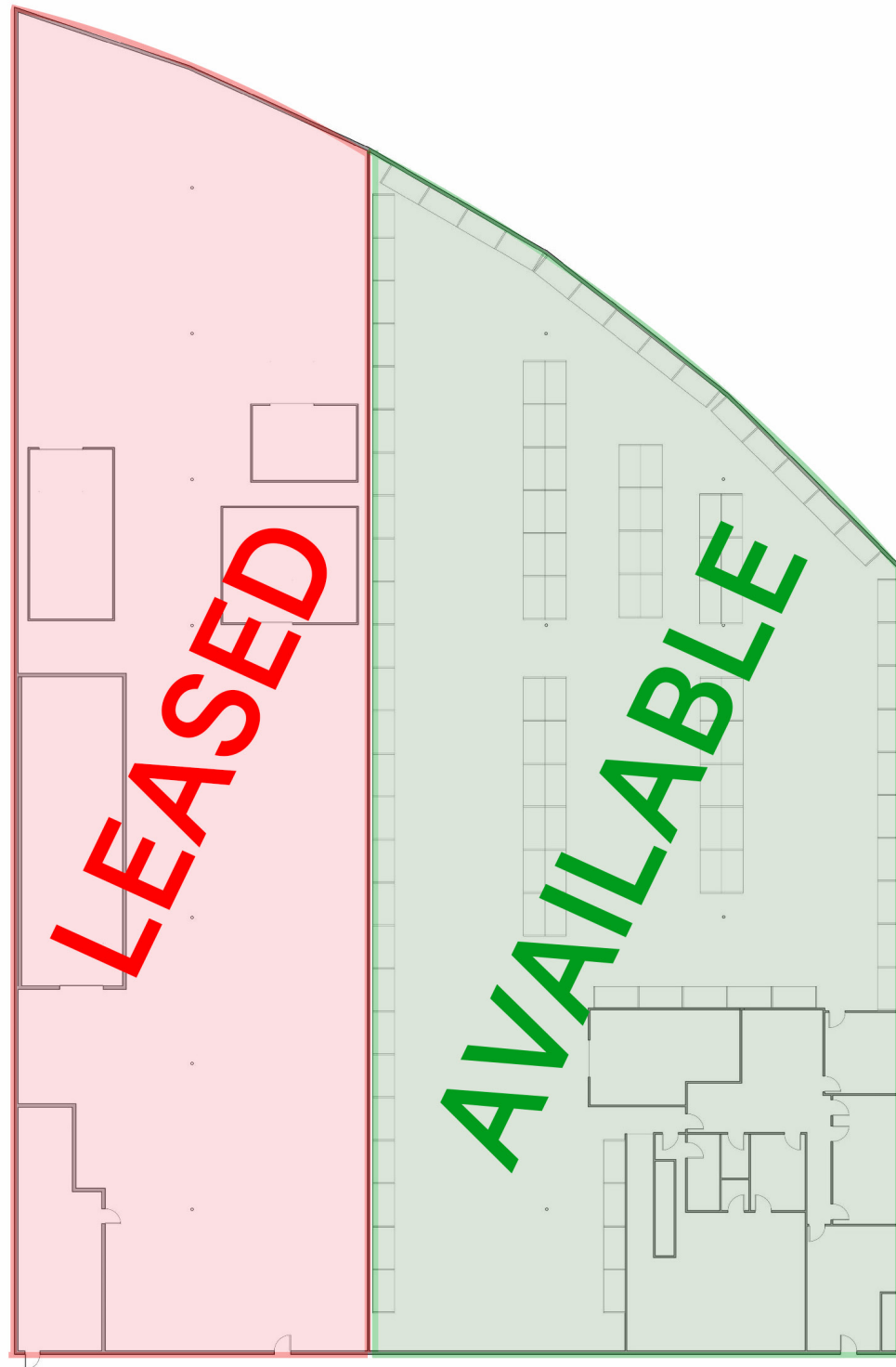


1600 NORTHSIDE DRIVE NW
Suite 100
ATLANTA, GA 30318
404.352.1882
WHNRE.COM

Conner Dickinson | Associate
C: 770.542.7917
cdickinson@whnre.com

Matt Sirockman | Associate
C: 404.202.2222
msirockman@whnre.com

5061 Kennedy Road | Forest Park, GA 30297

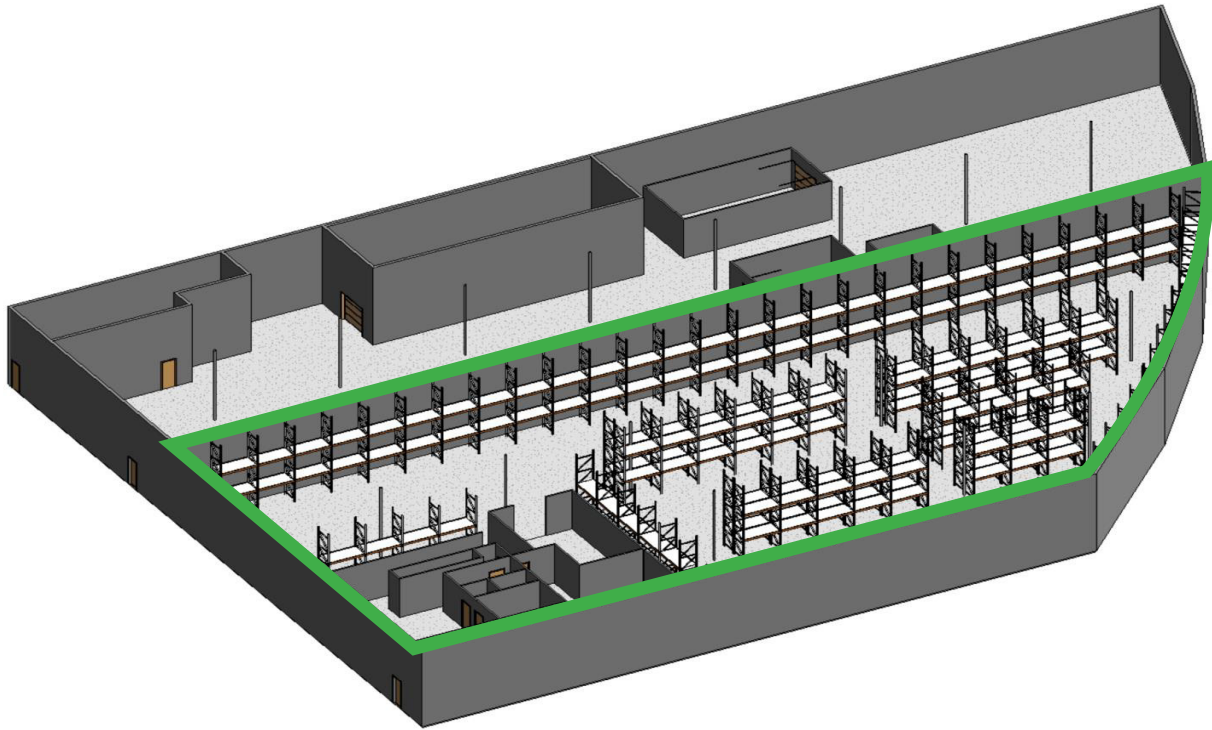


1600 NORTHSIDE DRIVE NW
Suite 100
ATLANTA, GA 30318
404.352.1882
WHNRE.COM

Conner Dickinson | Associate
C: 770.542.7917
cdickinson@whnre.com

Matt Sirockman | Associate
C: 404.202.2222
msirockman@whnre.com

5061 Kennedy Road | Forest Park, GA 30297



1600 NORTHSIDE DRIVE NW
Suite 100
ATLANTA, GA 30318
404.352.1882
WHNRE.COM

Conner Dickinson | Associate
C: 770.542.7917
cdickinson@whnre.com

Matt Sirockman | Associate
C: 404.202.2222
msirockman@whnre.com

Every effort has been made to provide accurate information, but no liability is assumed for errors or omissions.

5061 Kennedy Road | Forest Park, GA 30297



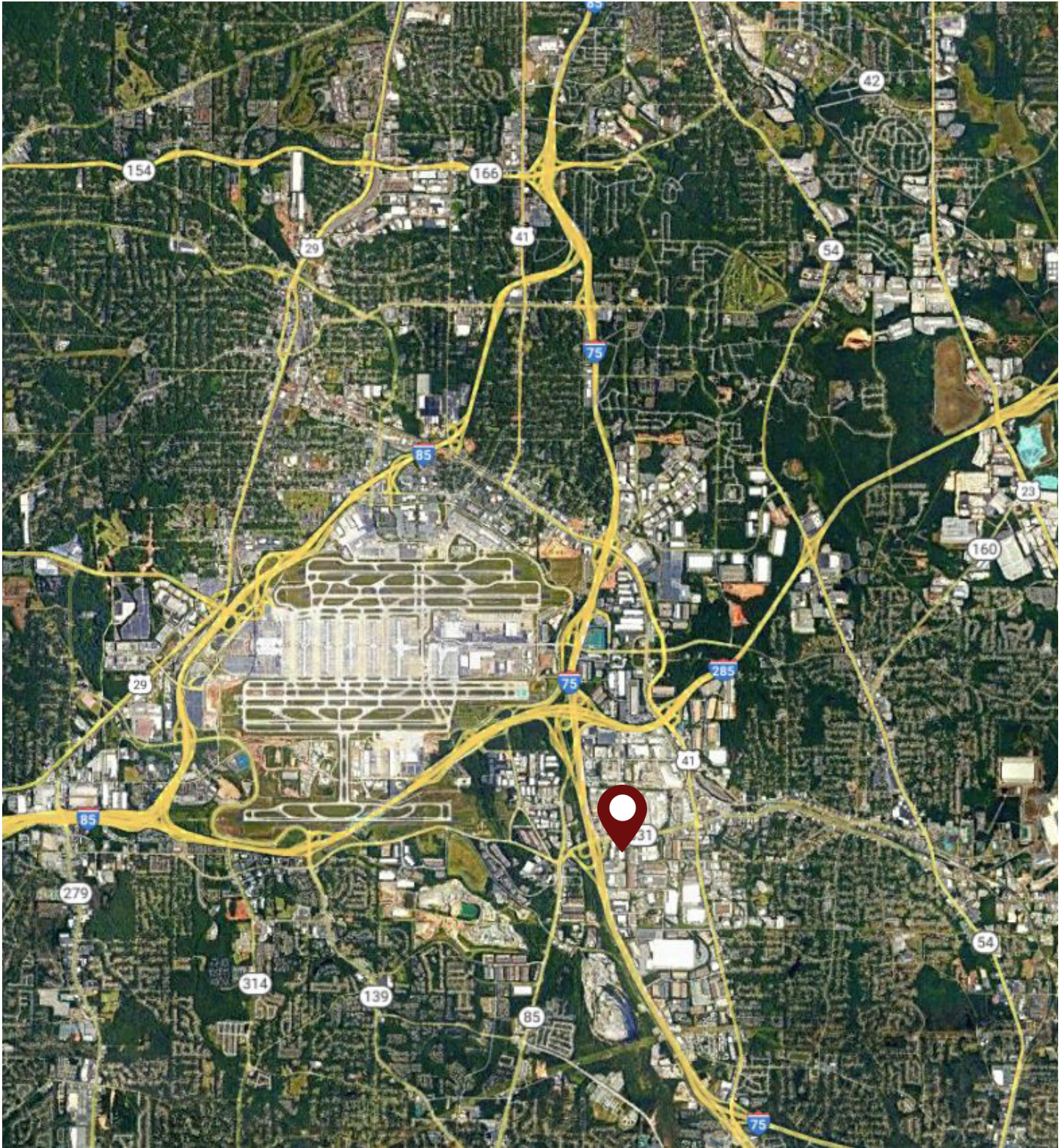
1600 NORTHSIDE DRIVE NW
Suite 100
ATLANTA, GA 30318
404.352.1882
WHNRE.COM

Conner Dickinson | Associate
C: 770.542.7917
cdickinson@whnre.com

Matt Sirockman | Associate
C: 404.202.2222
msirockman@whnre.com

Every effort has been made to provide accurate information, but no liability is assumed for errors or omissions.

5061 Kennedy Road | Forest Park, GA 30297



**WILSON
HULL
& NEAL**
REAL ESTATE, LLC

1600 NORTHSIDE DRIVE NW
Suite 100
ATLANTA, GA 30318
404.352.1882
WHNRE.COM

Conner Dickinson | Associate
C: 770.542.7917
cdickinson@whnre.com

Matt Sirockman | Associate
C: 404.202.2222
msirockman@whnre.com

Every effort has been made to provide accurate information, but no liability is assumed for errors or omissions.