



# 511 9TH AVENUE

COMMERCIAL SPACE FOR LEASE | HELLS KITCHEN  
NORTH CORNER OF 9TH AVENUE & W 38TH STREET

B/H  
REALTY



# 511 9TH AVENUE | NEW YORK, NY 10018



## OVERVIEW

BH Realty is pleased to present 511 9th Avenue, a turn-key, commercial space for rent. The 12-story building is located in bustling Hells Kitchen at the corner of W 39th Street and 9th Avenue and is near many residential buildings and major retailers. The space is beautifully designed and includes a 24-hour loading dock and freight elevator making it an exceptional space for a restaurant and nightclub.

### GROUND LEVEL | 4,000 SF

The ground level includes a spacious serving area complete with 15-foot ceilings and floor-to-ceiling windows, one restroom, and access to a 24-hour loading dock. The landlord is willing to vent the space as well.

### LOWER LEVEL | 3,825 SF

The lower level has 11-foot ceilings, contains a full bar area, two large restrooms, a large recreational space, and is accessible by elevator or stairs. The 24-hour loading dock is also accessible from the lower level.

INQUIRE FOR PRICE

ENTRANCE

**ARYEH VILINSKY**

ARYEH@BHREALTYGRP.COM

(917) 450-9773

**BH** REALTY

# 511 9TH AVENUE | NEW YORK, NY 10018

## HIGHLIGHTS

- All uses considered
- Great place for restaurant and club
- Has a Public Assembly Permit
- Total of 7,825 SF across ground level & basement
- Total 89 ft of frontage
- 24-hour loading dock available (direct access to both spaces)
- Freight elevator with direct access to both spaces
- Floor-to-ceiling windows
- Can be vented
- HVAC



## CAPACITY

Ground-Level Capacity	75 Persons
Lower-Level Capacity	170 Persons
Combined Capacity	245 Persons
Possible Outdoor Seating	25 Persons



**ARYEH VILINSKY**  
ARYEH@BHREALTYGRP.COM  
(917) 450-9773

**BH** REALTY



*"Hells Kitchen: Where East Village Grit Meets the Artsy West Side."*

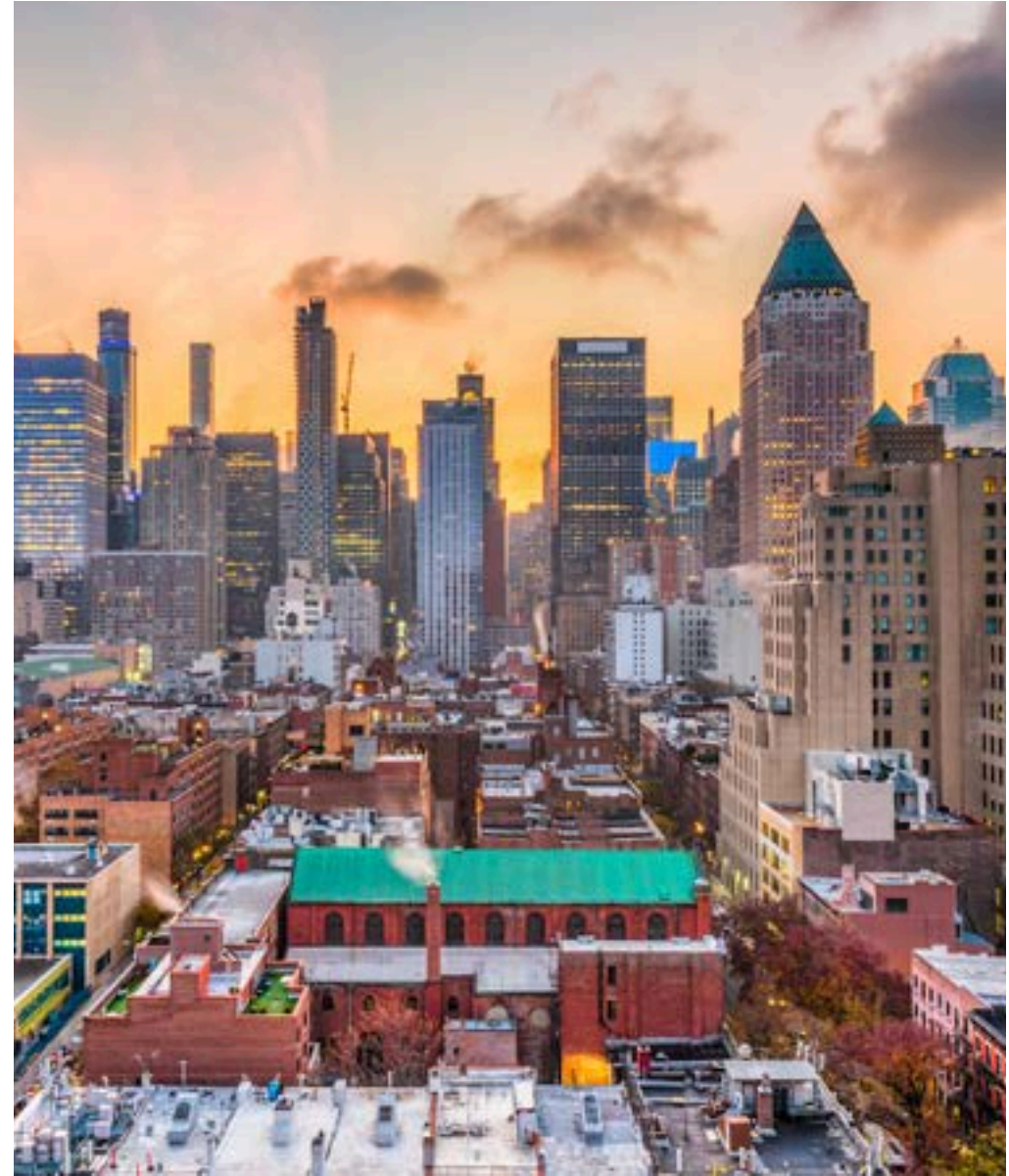
New York Times

## ABOUT THE NEIGHBORHOOD

Hells Kitchen is a diverse and exciting neighborhood offering a little bit of everything for everyone. A variety of restaurants, bustling streets, and a welcoming atmosphere are what is to be expected from this up-and-coming neighborhood. Residents describe the community as down-to-earth and possessing old New York charm.

Hells Kitchen has a recent population of 33,470 and is made up mostly of young professionals. Niche.com ranked Hell's Kitchen as the #1 Best Place for Young Professionals in New York City and the #7 Best Neighborhood to Live in New York City. A large number of businesses operate in or near Hells Kitchen including Coach, Wells Fargo Securities, Time Warner, HBO, DNB Bank, YouTube, Venmo, and Uber.

Hells Kitchen boasts excellent transportation in part due to both Penn Station and Port Authority Bus Terminal's proximity. Like most neighborhoods in Manhattan, Hells Kitchen is incredibly walkable and has a Walk Score of 98. Directly surrounding 511 9th Avenue is a plethora of residential buildings, hotels, restaurants, and more.







# 511 9TH AVENUE | NEW YORK, NY 10018



## TRANSPORTATION

511 9th Avenue is conveniently located steps from the 42nd St-Port Authority Bus Terminal and near other major NYC Transit.

 at 42nd St-Port Authority Bus Terminal	0.18 miles
 at 34th St	0.24 miles
 at 34th St - Hudson Yards	0.33 miles
 at Times Square Penn Station	0.36 miles 0.4 miles

WALK SCORE  
**98%**

TRANSIT SCORE  
**100%**

BIKE SCORE  
**92%**

*\*Loopnet.com*

## AIRPORTS

La Guardia Airport	9.6 miles
Newark Liberty International Airport	15.0 miles
John F. Kennedy International Airport	17.4 miles

**ARYEH VILINSKY**  
ARYEH@BHREALTYGRP.COM  
(917) 450-9773



# 511 9TH AVENUE | NEW YORK, NY 10018



**ARYEH VILINSKY**  
ARYEH@BHREALTYGRP.COM  
(917) 450-9773





# GROUND LEVEL



**ARYEH VILINSKY**  
ARYEH@BHREALTYGRP.COM  
(917) 450-9773

**BH** REALTY



# LOWER LEVEL

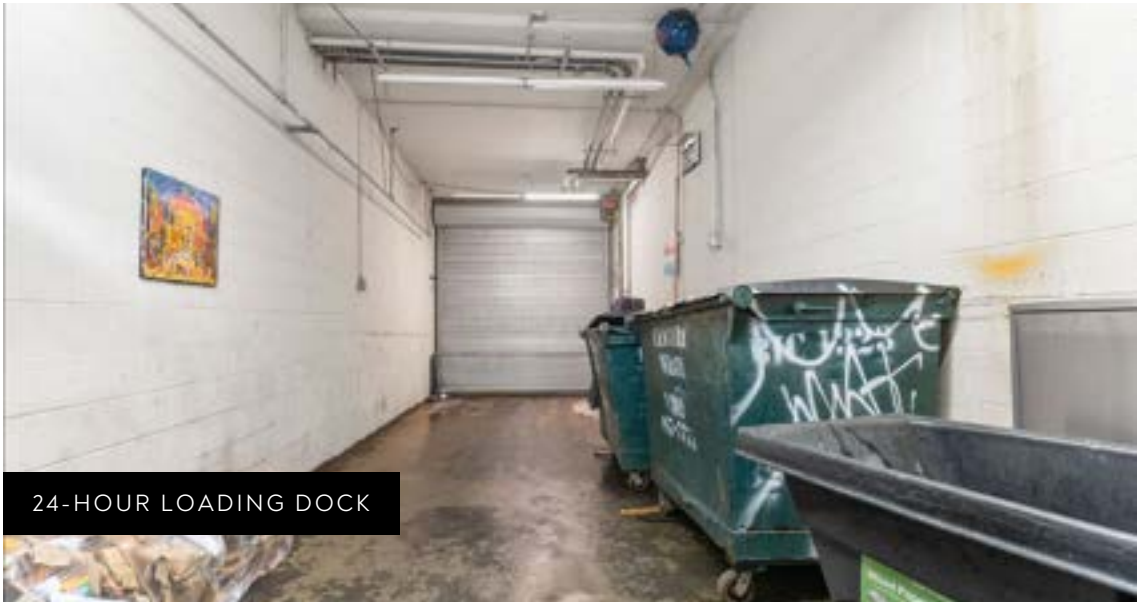


**ARYEH VILINSKY**  
ARYEH@BHREALTYGRP.COM  
(917) 450-9773





# ADDITIONAL PHOTOS



**ARYEH VILINSKY**  
ARYEH@BHREALTYGRP.COM  
(917) 450-9773



# FLOORPLAN

GROUND LEVEL | 4,000 SF



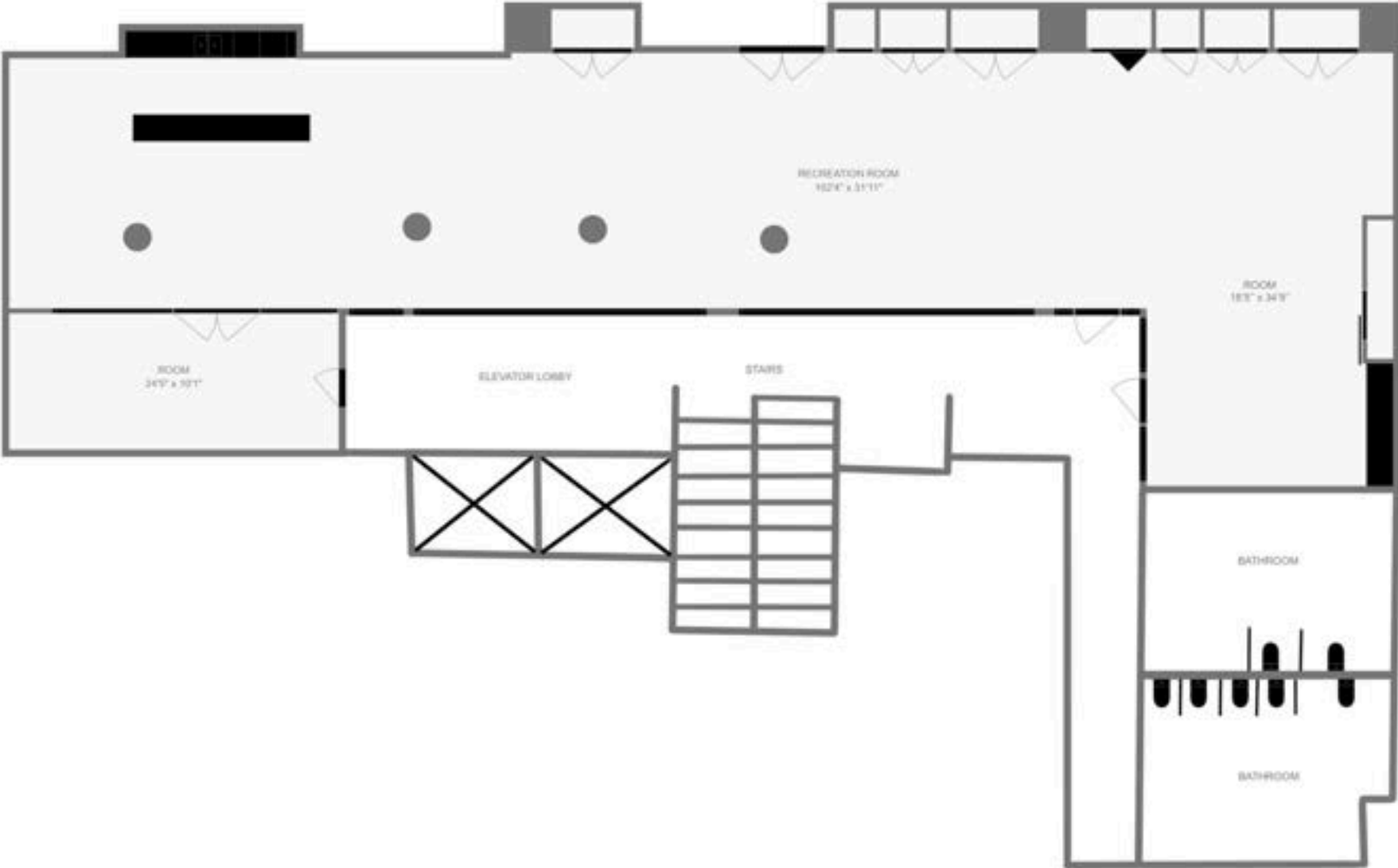
**ARYEH VILINSKY**  
ARYEH@BHREALTYGRP.COM  
(917) 450-9773





# FLOORPLAN

LOWER LEVEL | 3,825 SF



**ARYEH VILINSKY**  
ARYEH@BHREALTYGRP.COM  
(917) 450-9773



B/H  
REALTY

FOR MORE INFORMATION PLEASE CONTACT:



**ARYEH VILINSKY**

ARYEH@BHREALTYGRP.COM

(917) 450-9773

[www.bhrgnyc.com](http://www.bhrgnyc.com) | (516) 225-7739

25 EAST 21ST STREET – 10TH FLOOR, NEW YORK, NY 10010