

STAND ALONE BUILDING AVAILABLE



FOR LEASE IN BEVERLY HILLS

212 S. GALE DRIVE, BEVERLY HILLS, CA 90211

Jeffrey E. Resnick

310.922.1717

jresnick@cagre.com

Lic. 00405333

Adam Funk

310.666.0124

afunk@cagre.com

Lic. 02129715

**\$10,000/MG/
MONTH**



SPACE INFORMATION



Stand - alone office building in Beverly Hills with several executive offices, conference rooms, and 7 restrooms

These materials are based on information and content provided by others, which we believe are accurate. No guarantee, warranty or representation is made by Commercial Asset Group, Inc. or its personnel. All interested parties must independently verify accuracy and completeness. As well, any projections, assumptions, opinion, or estimates are used for example only and do not represent the current or future performance of the identified property. Your tax, financial, legal and toxic substance advisors should conduct a careful investigation of the property and its suitability for your needs, including land use limitations. The property is subject to prior lease, sale, change in price, or withdrawal from the market without notice.

DEAL TERMS

±4,297 SF
\$10,000 / MG, MONTHLY
NO T.I. ALLOWANCE

PARKING

9 STRIPED SPACES

3 - 5 YEAR DEAL

1 - 4 MONTHS ABATEMET

3 MONTHS SECURITY

MUST BE CREDIT TENANT

MG CHARGES

WATER, GAS, ELECTRICITY,
BH CITY TRASH, AND
JANITORIAL

TENANT IMPROVEMENTS
AT TENANT'S SOLE COST

NEARBY AMENITIES



INTERIOR PHOTOS



CONFERENCE ROOM

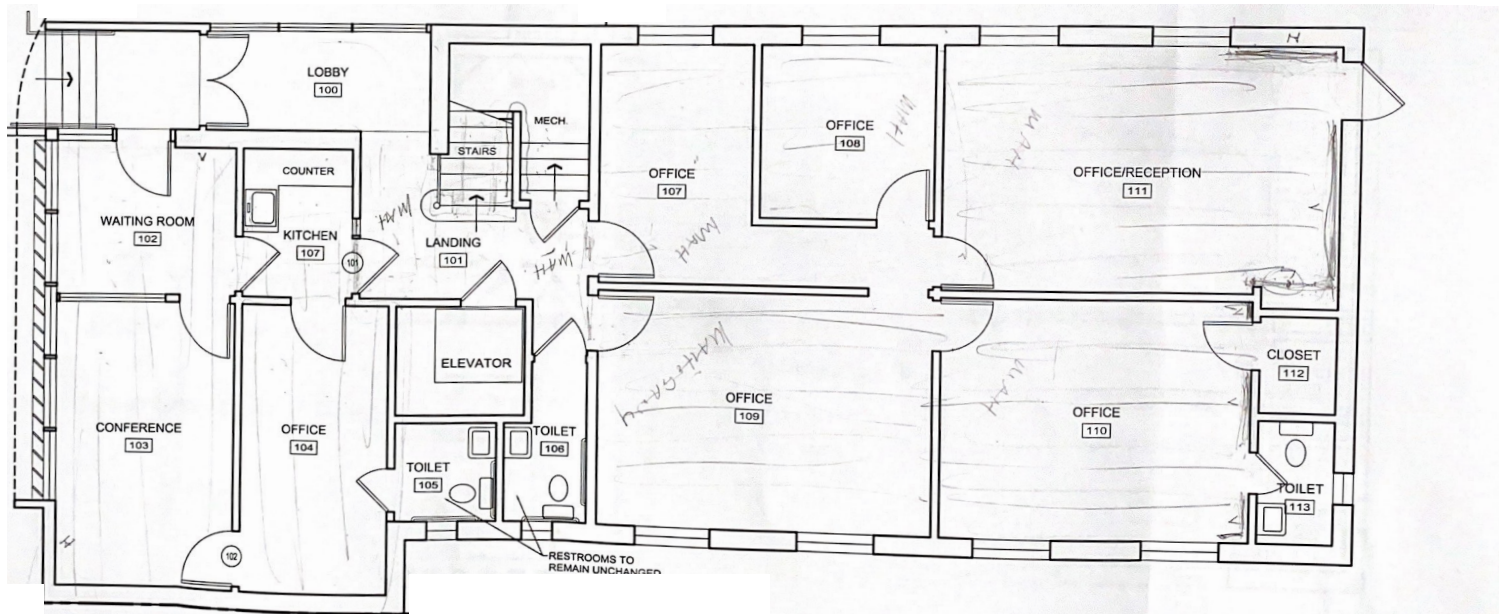


UPSTAIRS HALLWAY

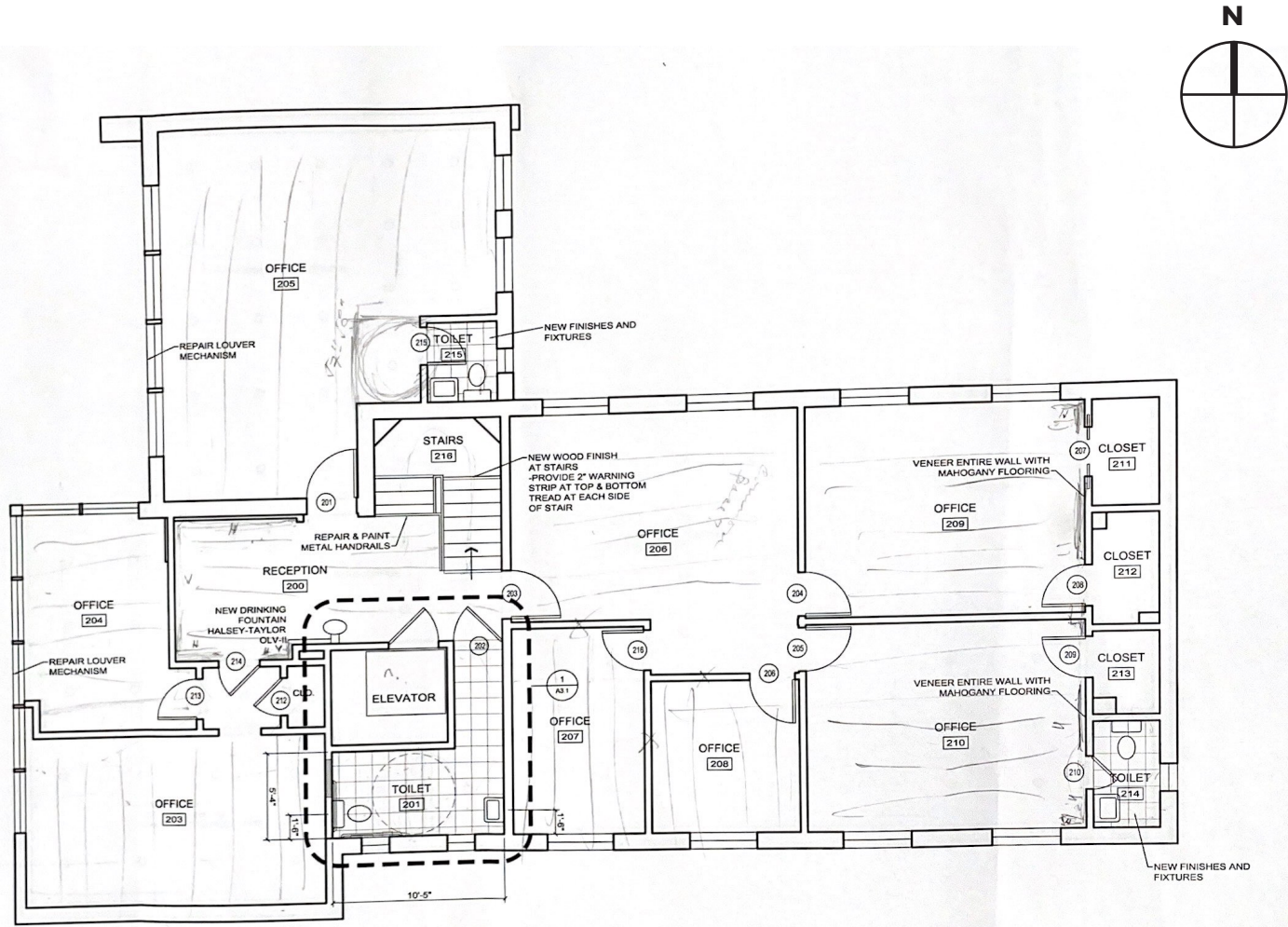


EXECUTIVE OFFICE

FLOOR PLAN (GROUND FLOOR)



FLOOR PLAN (SECOND FLOOR)





Jeffrey E. Resnick

310.922.1717

jresnick@cagre.com

Lic. 00405333

Adam Funk

310.666.0124

afunk@cagre.com

Lic. 02129715

Commercial Asset Group

1801 Century Park East, Ste 1550

Los Angeles, CA 90067

P 310.275.8222 F 310.275.8223

www.cagre.com Lic. 01876070



**COMMERCIAL
ASSET GROUP**