



JOHN STANLEY
&
ASSOCIATES

COMMERCIAL REAL ESTATE



**+ 36.4 Ac. - Ray Thorington Rd.
Montgomery, AL 36117**

FOR SALE

- **Sale Price:** \$910,000.00
- **Land Size:** ± 36.4 Acres
- **Zoning:** PUD
- **Best Use:** Single Family, Church, Assisted Living, Senior Housing
- **Visibility:** Excellent
- **Possession:** Immediate
- **Listing Type:** Exclusive

A ± 36.4 acre parcel located in Deer Creek subdivision at Ray Thorington Road and Deer Creek Crossing. Zoned PUD with utilities and street improvements. Contact John Stanley, CCIM, for more information at (334) 271-2475.



John C. Stanley, CCIM
John Stanley & Associates, Inc.
4747 Woodmere Boulevard
Montgomery, AL 36106
(334) 271-2475 voice
(334) 271-2421 fax
jstanley@johnstanleyassociates.com
www.johnstanleyassociates.com



All information is from sources deemed reliable, but no warranty is made as to the accuracy thereof and same is submitted subject to errors, omissions, change of price, or other conditions, such as prior sales or withdrawal without notice by John Stanley & Associates, Inc. or the Owner.



New Park

The Property

Deer Creek

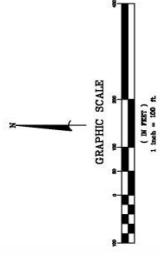
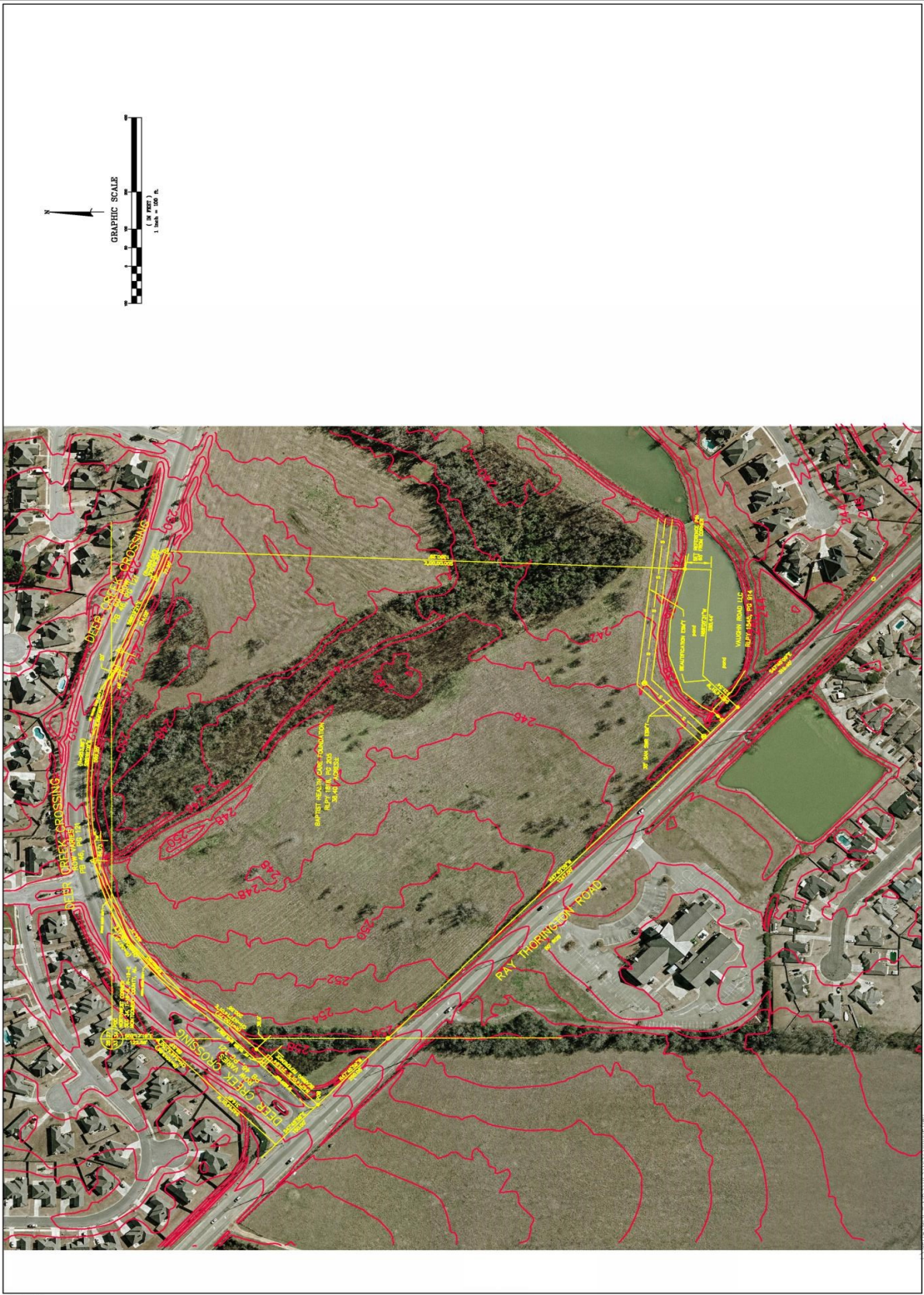
Melrose

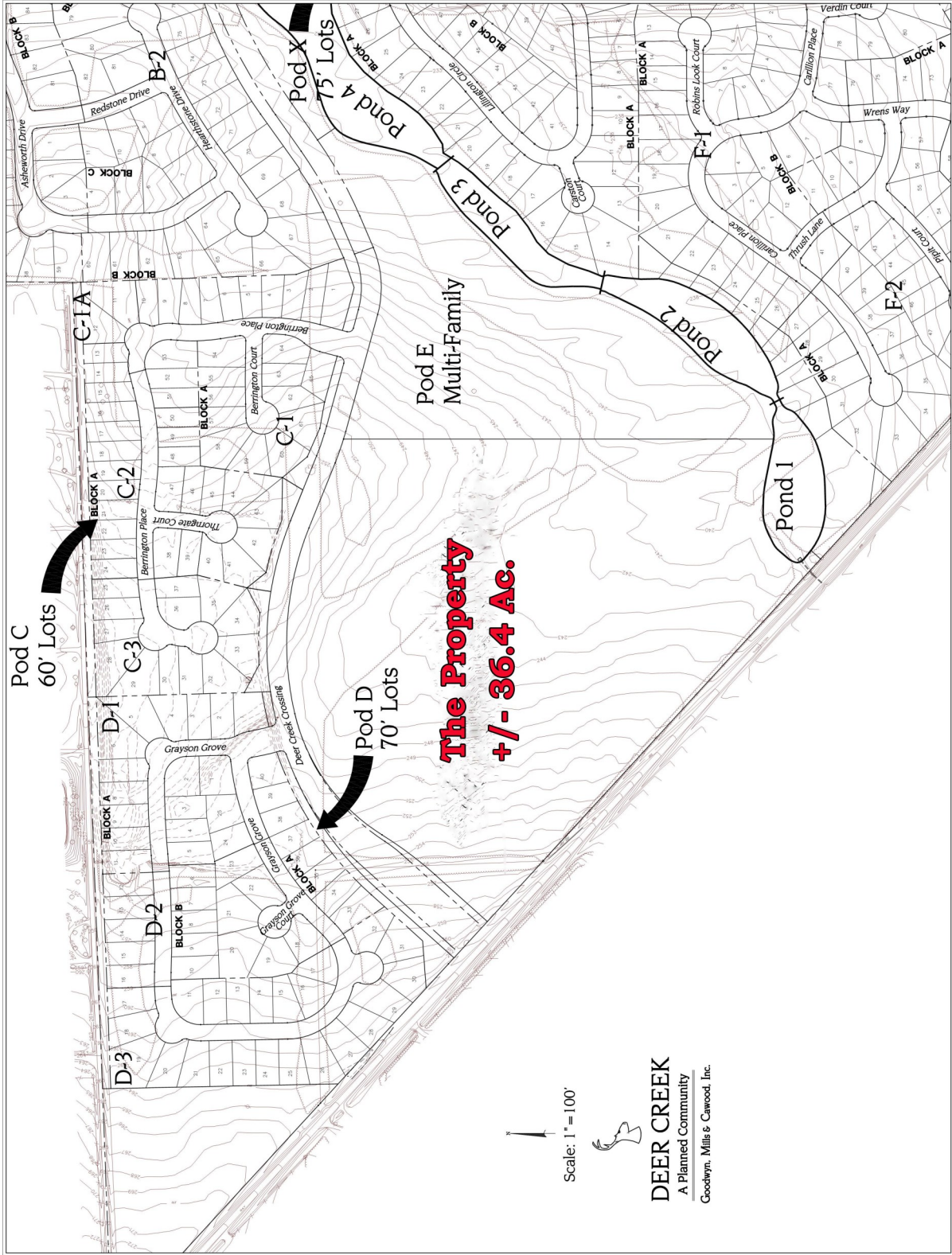
Ray Thorington Rd

Sturbridge

Vaughn Rd

CVS/pharmacy
Get it the way you want it.





Scale: 1" = 100'



DEER CREEK
 A Planned Community
 Goodwyn, Mills & Carwood, Inc.

