

Brandon Oaks Plaza Brandon, Florida 33511



Retail/Office Space Available



- Brandon is one of the fastest growing suburban areas in the country and is just minutes from downtown Tampa and South Tampa via the Lee Roy Selmon Crosstown Expressway.
- 2,700 SF and 1,200 SF Available Now.
- Centrally located at 2102 - 2128 West Brandon Blvd. (SR 60) on a signalized corner with Outback Steakhouse, 1/2 mile East of Westfield Brandon Mall and I-75.
- Center has great visibility on State Road 60.
- Parking: 100 spaces (5/1000 SF)
- Traffic Count:
 - SR60 (E/W) - 88,000 VPD
 - I -75 (N/S) - 140,000 VPD

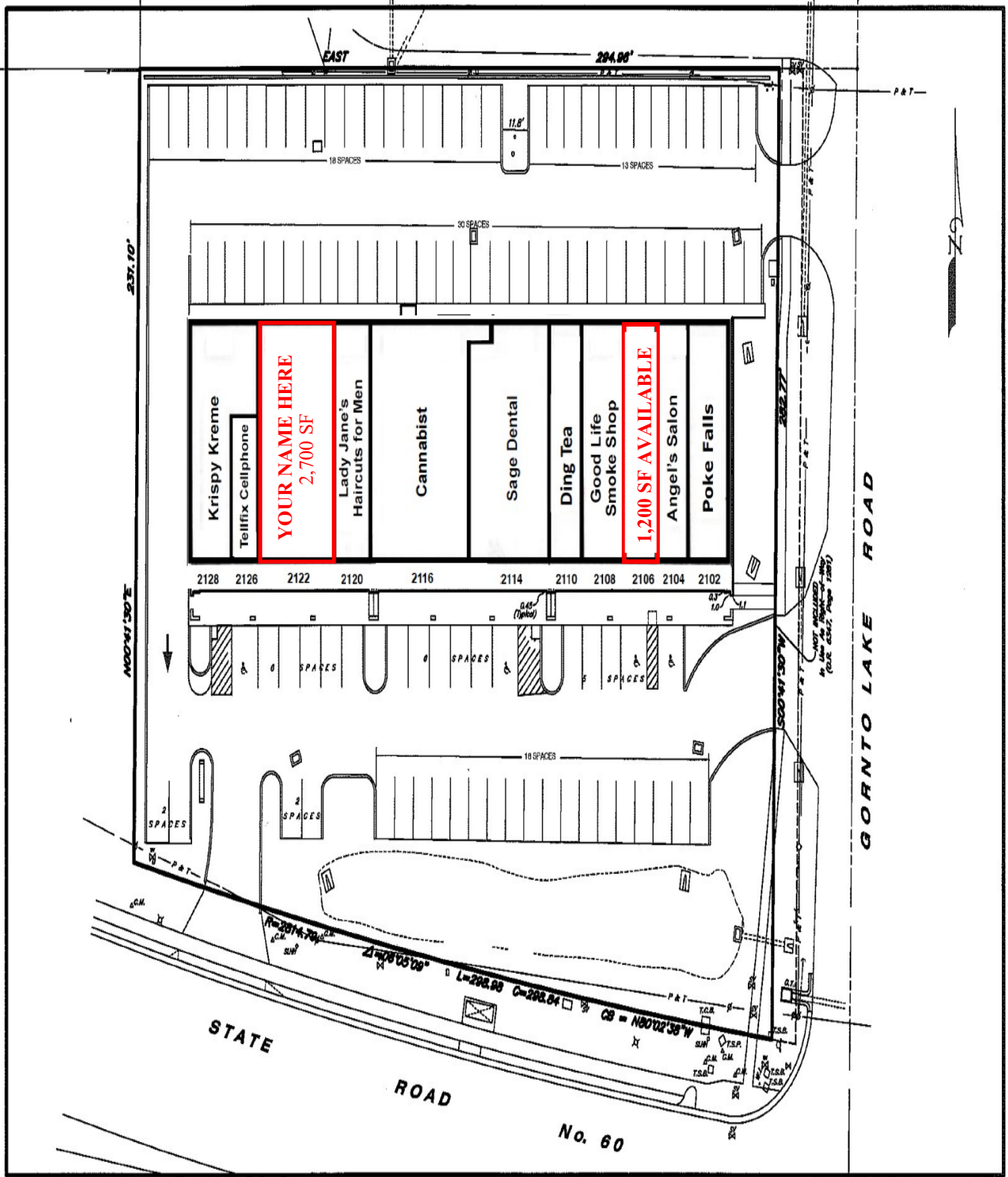


332 South Plant Ave.
Tampa, FL 33606-2346
Phone: 813-835-7747
www.propertypro.com

2025 Demographics

	<u>3 Miles</u>	<u>5 Miles</u>	<u>7 Miles</u>
Population	92,641	220,155	330,649
Avg. HH Income	\$71,650	\$73,855	\$75,745
Households	37,070	83,099	122,401
Employment	57,147	104,652	154,329

Site Plan

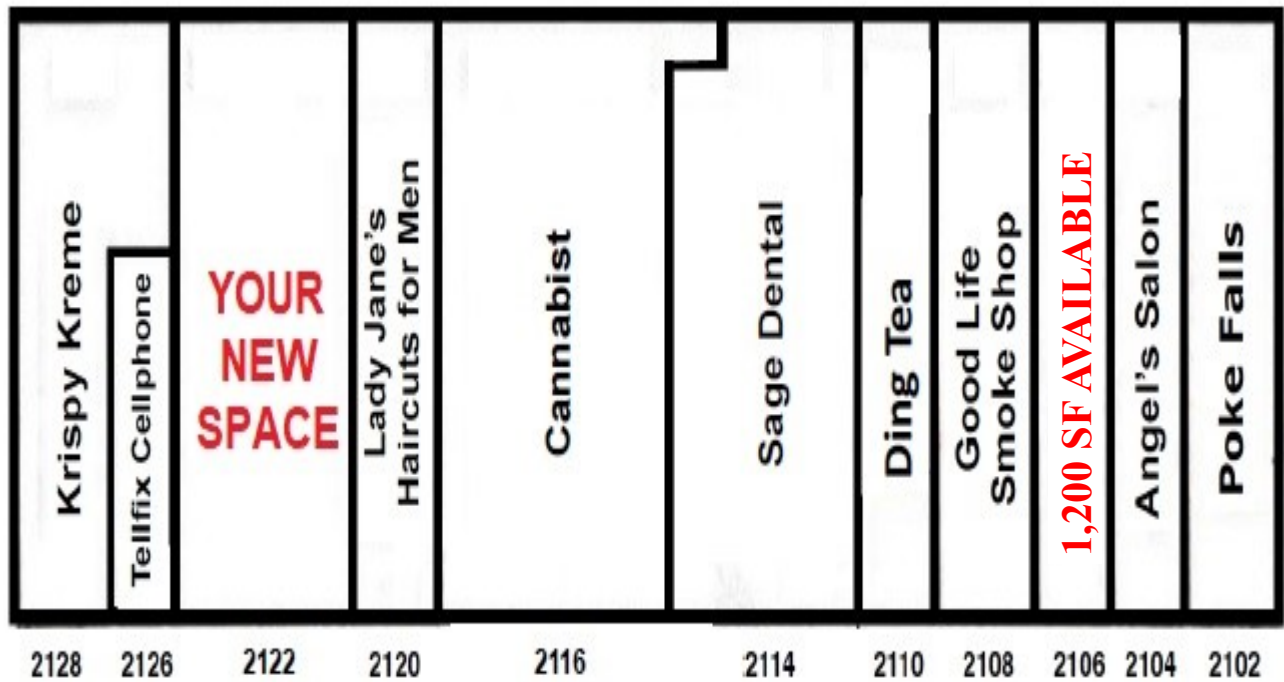


Brandon Oaks Plaza
2102-2128 West Brandon Boulevard
Brandon, FL 33511

Site Plan

BRANDON OAKS PLAZA

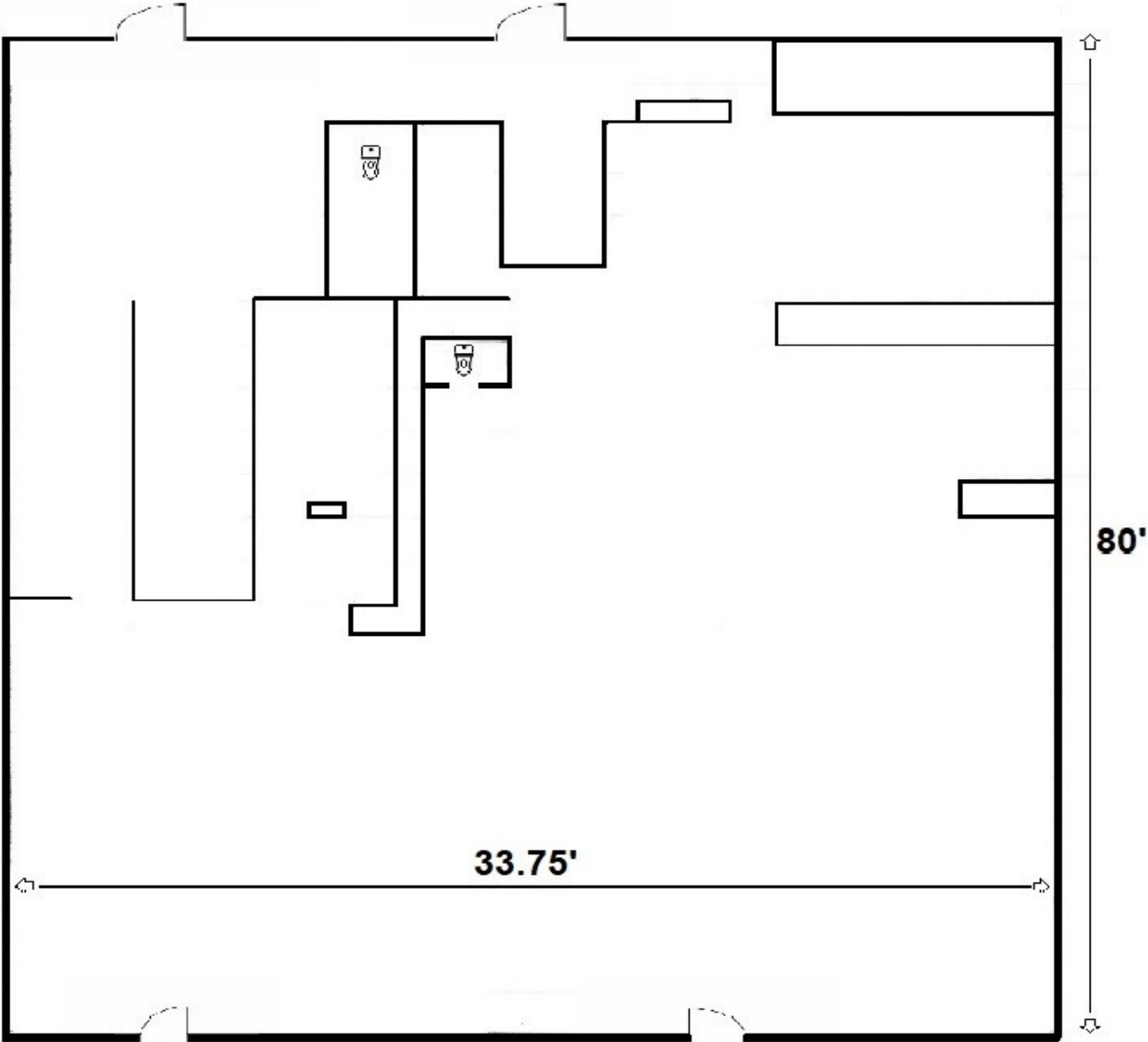
2102-2128 WEST BRANDON BLVD.
BRANDON, FLORIDA 33511



Brandon Oaks Plaza
2102-2128 West Brandon Boulevard
Brandon, FL 33511

Floor Plan

YOUR NEW SPACE



**Brandon Oaks Plaza
2102-2128 West Brandon Boulevard
Brandon, FL 33511**

Monument Sign



**Brandon Oaks Plaza
2102-2128 West Brandon Boulevard
Brandon, FL 33511**

