

INDUSTRIAL PROPERTY FOR SUB-LEASE



# 740 QUAKER HIGHWAY

Uxbridge, MA 01596

**GEORGE PASKALIS, SIOR**

Partner  
401.751.3200 x3303  
george@mgcommercial.com

**JULIE FRESHMAN, SIOR**

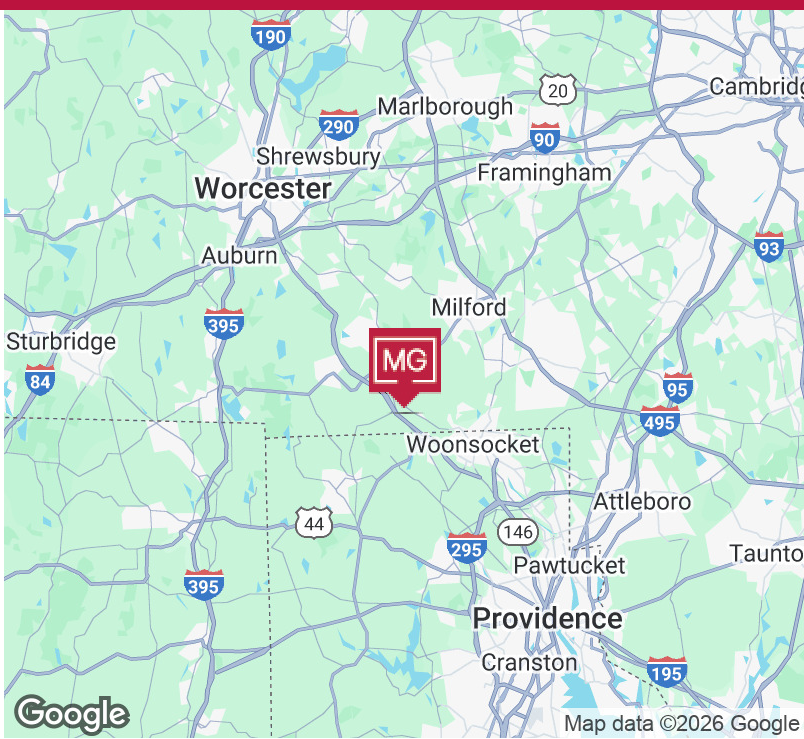
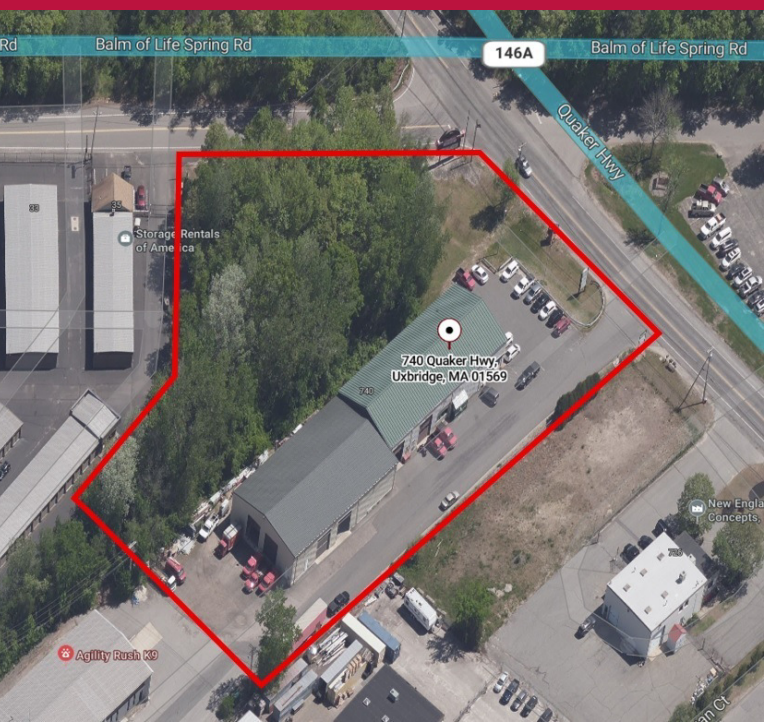
Vice President  
401.751.3200 x3309  
julie@mgcommercial.com

**MG COMMERCIAL**

365 Eddy Street, Penthouse Suite  
Providence, RI 02903  
401.751.3200 | mgcommercial.com



# PROPERTY SUMMARY



## PROPERTY DESCRIPTION

18,668 SF of space is available for sub-lease at 740 Quaker Highway (7,176 SF office, 10,316 SF warehouse and 1,176 SF mezzanine storage). Ceiling heights range from 16' to 24' clear, and the building contains four grade-level doors and two loading docks.

## PROPERTY HIGHLIGHTS

- 10,316 SF Warehouse
- 7,176 SF Office
- 1,176 Mezzanine (Storage)
- 16' - 24' Clear Ceiling Heights
- Four (4) 12' x 14' Grade Level Doors
- Two (2) 12' x 14' Loading Docks

## LOCATION DESCRIPTION

740 Quaker Highway is well located in the Quaker Industrial Park in Uxbridge, Massachusetts. The property is located immediately off Route 146 at Exit 1, 10 miles from I-90 (Massachusetts Turnpike) and 15 miles from Providence, Rhode Island.

## OFFERING SUMMARY

Lease Rate:	\$9.95 SF/yr (NNN)
Lot Size:	2.4 Acres
Available SF:	18,668 SF
Zoning:	Industrial B

**GEORGE PASKALIS, SIOR**  
Partner  
401.751.3200 x3303  
george@mgcommercial.com

**JULIE FRESHMAN, SIOR**  
Vice President  
401.751.3200 x3309  
julie@mgcommercial.com

365 Eddy Street, Penthouse Suite  
Providence, RI 02903  
mgcommercial.com

