



10040 18th Street North

ST. PETERSBURG, FL 33716

For Lease

Suite 100

17,701 SF
Available



PROPERTY HIGHLIGHTS

Total Space Available: 17,701 SF

Office Area: ± 6,264 SF

Clear Height: 24'

Construction: Tilt-Wall

Parking: 1.65 / 1,000

Sprinkler: ESFR



**CURRENTLY (3)
DOCK HIGH DOORS (9'x10')**

+ ABILITY TO ADD (4) MORE



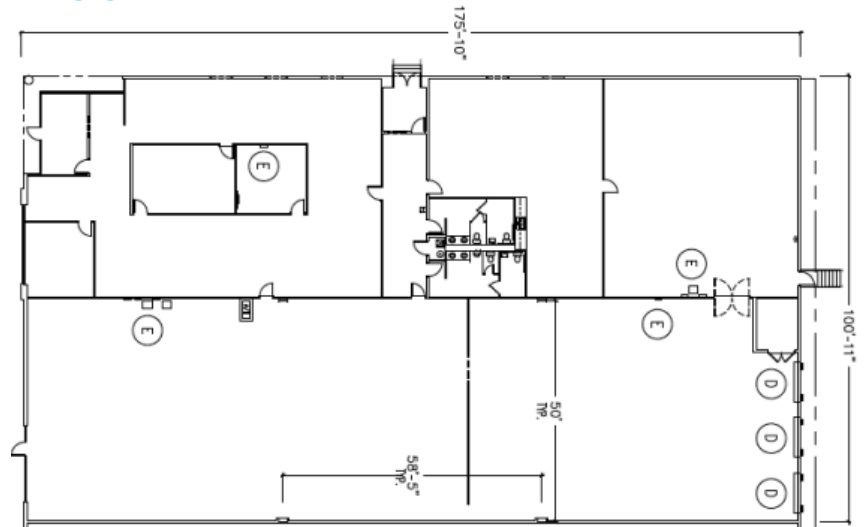
**1200 AMPS,
3 PHASE POWER**

+ ABILITY TO ADD 800 AMPS

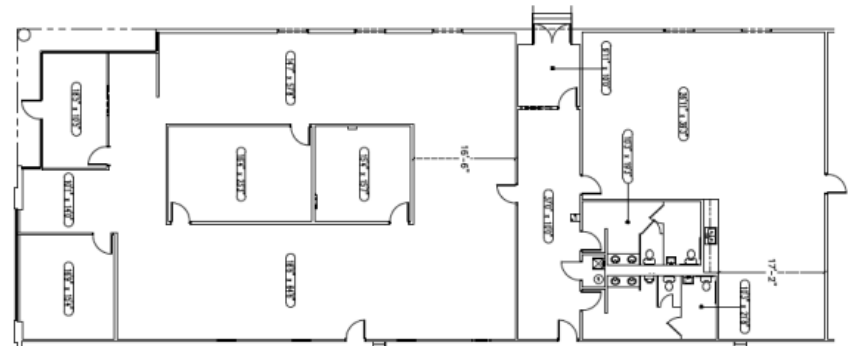


**100%
AIR CONDITIONED**

FLOORPLAN



OFFICE SPACE



RECENT RENOVATIONS





10040 18TH STREET NORTH
ST. PETERSBURG, FL 33716

JOHN JACKSON, CCIM, SIOR
Executive Director
+1 727 643 7316
john.jackson@cushwake.com

JT FAIRCLOTH, SIOR
Director
+1 813 833 3242
jt.faircloth@cushwake.com

CASEY PERRY
Senior Associate
+1 813 233 6564
casey.g.perry@cushwake.com

©2025 Cushman & Wakefield. All rights reserved. The information contained in this communication is strictly confidential. This information has been obtained from sources believed to be reliable but has not been verified. No warranty or representation, express or implied, is made as to the condition of the property (or properties) referenced herein or as to the accuracy or completeness of the information contained herein, and same is submitted subject to errors, omissions, change of price, rental or other conditions, withdrawal without notice, and to any special listing conditions imposed by the property owner(s). Any projections, opinions or estimates are subject to uncertainty and do not signify current or future property performance.