



Office/Warehouse Space for Lease

**3001-3023 82ND LANE NE
BLAINE, MN 55449**

Available Space

Suite 3019

3,600 SF Total
One (1) Dock Door
Available Now

Lease Rates

Negotiable

2025 Est. CAM/Tax:

\$4.00 PSF

Property Highlights

- Near many retail shops, restaurants and hotels
- Easy access to 35-W
- Ample surface parking
- Approx. 16' clear height



For information, please contact:

Dan Friedner

Senior Managing Director

t 612-430-9991

dan.friedner@nrmk.com

Jay Chmielewski

Senior Managing Director

t 612-430-9982

jay.chmielewski@nrmk.com

Patrick Cullen

Associate Director

t 612-430-9995

patrick.cullen@nrmk.com

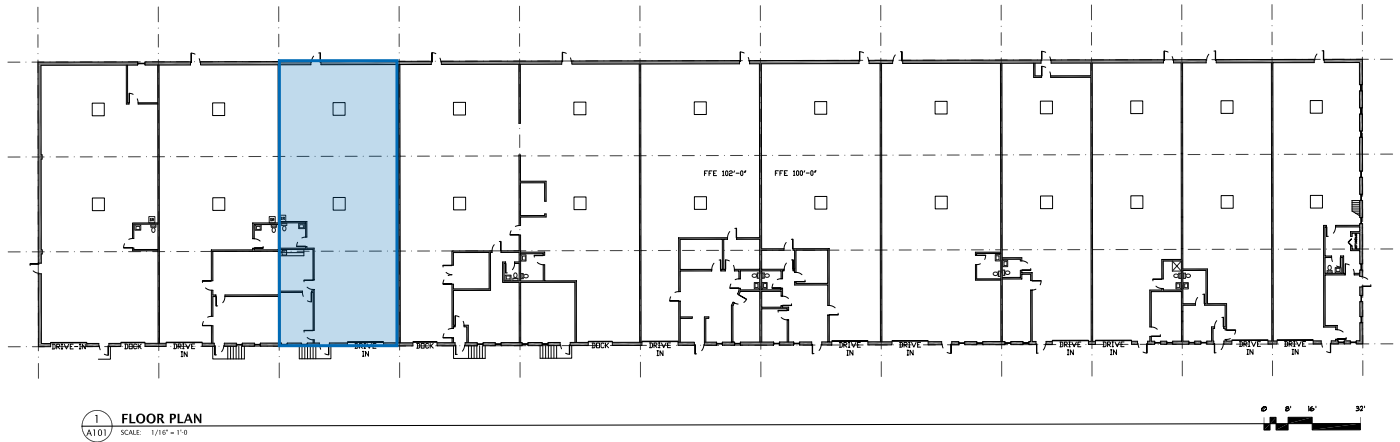
100 South Fifth St, Suite 2100
Minneapolis, MN 55402

nrmk.com

NEWMARK

The information contained herein has been obtained from sources deemed reliable but has not been verified and no guarantee, warranty or representation, either express or implied, is made with respect to such information. Terms of sale or lease and availability are subject to change or withdrawal without notice.

3001-3023 82ND LANE NE | BLAINE, MN 55449



For information, please contact:

Dan Friedner
Senior Managing Director
t 612-430-9991
dan.friedner@nmrk.com

Jay Chmielecki
Senior Managing Director
t 612-430-9982
jay.chmielecki@nmrk.com

Patrick Cullen
Associate Director
t 612-430-9995
patrick.cullen@nmrk.com

100 South Fifth St, Suite 2100
Minneapolis, MN 55402

nmrk.com

NEWMARK

The information contained herein has been obtained from sources deemed reliable but has not been verified and no guarantee, warranty or representation, either express or implied, is made with respect to such information. Terms of sale or lease and availability are subject to change or withdrawal without notice.