

Medical Office | For Lease

CBRE

Pinecroft III

9303 Pinecroft Dr
The Woodlands, TX 77380
www.cbre.com/properties

Move-In Ready Suite Available



Building owned by
HEALTHCARE REALTY



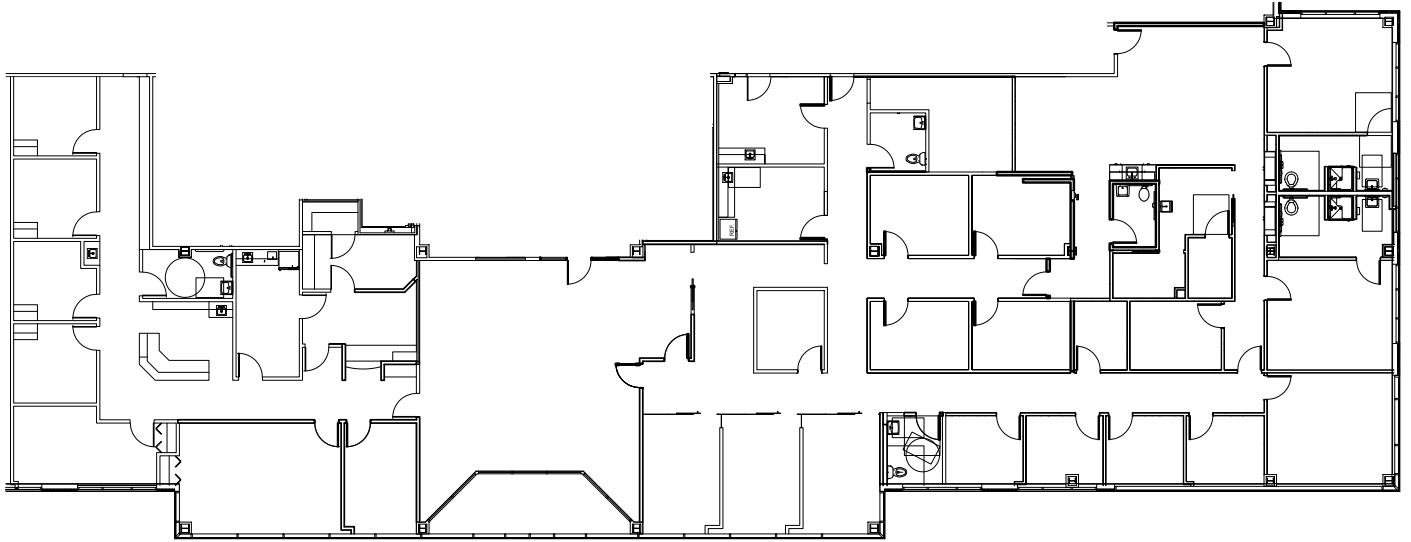
Property Highlights

Pinecroft III is a 56,800 RSF, 3-story, Class A, Medical Office Building located in The Woodlands.

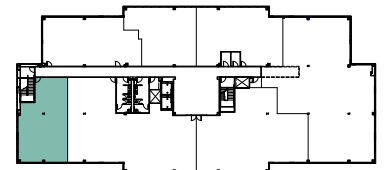
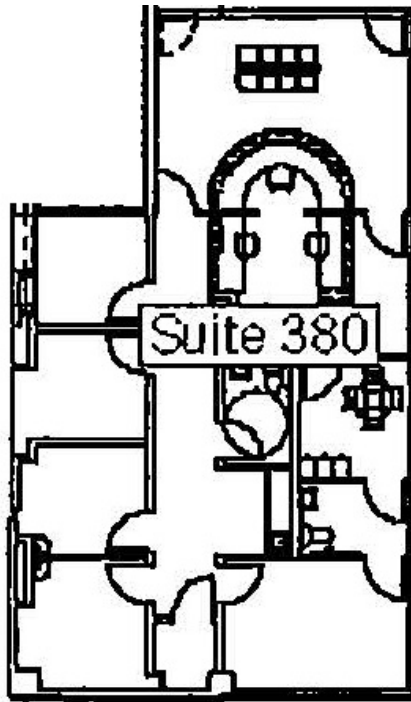
- Excellent location directly across from Memorial Hermann The Woodlands Hospital and less than 4 miles from Houston Methodist, Texas Children’s, and CHI/St. Luke’s The Woodlands Hospitals
- Convenient access to I-45 with abundant parking including a parking garage, free surface parking for visitors, and covered parking for doctors
- Covered drop-off area provides ease of access for patients and visitors
- 2nd generation medical office space available

DEMOGRAPHICS	1 MILE	3 MILES	5 MILES
Population - Estimated 2024	4,651	61,502	166,186
Population – 5-Year Projection	4,657	60,805	165,684
Median Age - Estimated 2024	49.1	41.6	38.5
Average Household Income - Estimated 2024	\$169,315	\$152,117	\$153,971

SUITE 250 - 9,569 RSF



SUITE 380 - 1,662 RSF

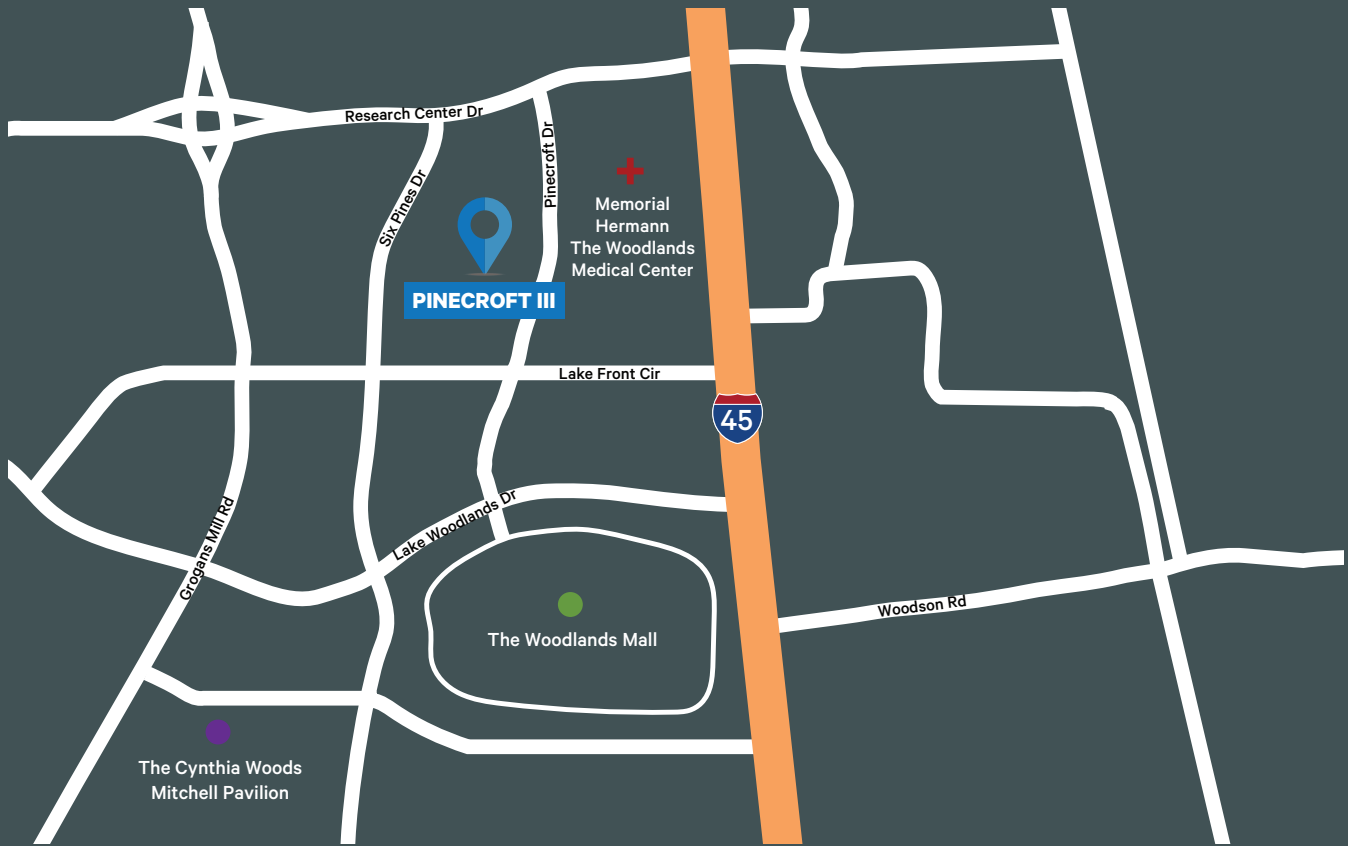


3rd Floor



PINECROFT III

9303 Pinecroft Dr | The Woodlands, TX 77380



Contact Us

Brandy Bellow Spinks

Executive Vice President

+1 713 726 6100

brandy.bellow@cbre.com

Pamela Sprouse

Vice President

+1 832 335 0277

pamela.sprouse@cbre.com

Building owned by

HEALTHCARE REALTY



© 2025 CBRE, Inc. All rights reserved. This information has been obtained from sources believed reliable, but has not been verified for accuracy or completeness. You should conduct a careful, independent investigation of the property and verify all information. Any reliance on this information is solely at your own risk. CBRE and the CBRE logo are service marks of CBRE, Inc. All other marks displayed on this document are the property of their respective owners, and the use of such logos does not imply any affiliation with or endorsement of CBRE. Photos herein are the property of their respective owners. Use of these images without the express written consent of the owner is prohibited.