



## Thompson - Goodwin Property

830 N Service Rd Blytheville, Arkansas 72315

### Property Highlights

- Approximately 14.77 Acres Land for sale
- Zoned Commercial
- Natural Gas- Black Hills Energy
- Water and Sewer- Blytheville Waterworks
- Electricity - Entergy Arkansas
- Distance to Memphis: 68 miles
- Distance to Little Rock: 187 miles
- Distance to St. Louis: 218 miles
- Mississippi County Economic Development website: <https://cottontosteel.com>
- Contact our agent for more information



### For More Information

**Van Spear**

O: 870 735 6221  
vspear@saigcompany.com

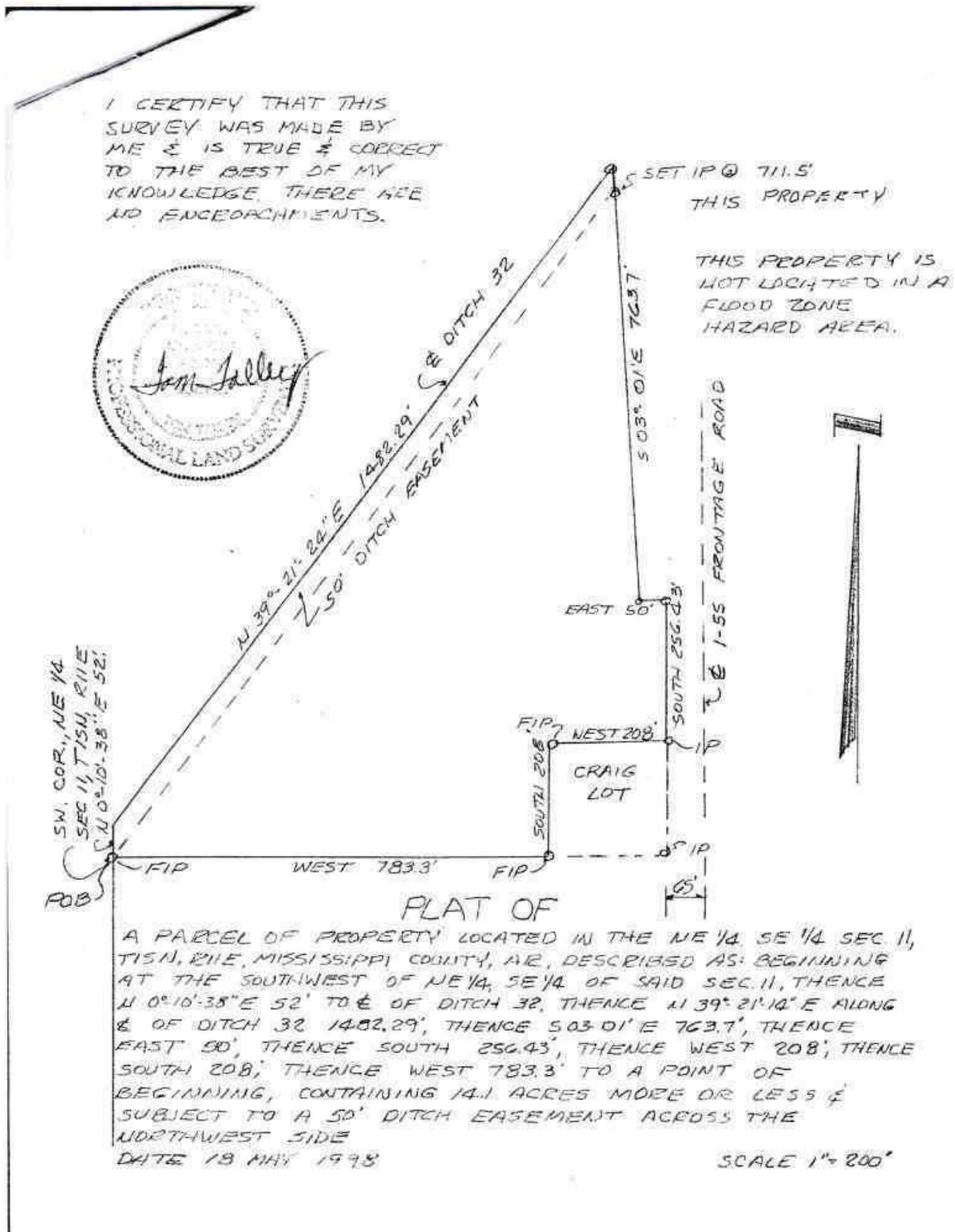
**Mallory Darby**

C: 870 532 6084  
mallory@cottontosteel.com



830 N Service Rd, Blytheville, AR 72315

We obtained the information above from sources we believe to be reliable. However, we have not verified its accuracy and make no guarantee, warranty or representation about it. It is submitted subject to the possibility of errors, omissions, change of price, rental or other conditions, prior sale, lease or financing, or withdrawal without notice. We include projections, opinions, assumptions or estimates for example only, and they may not represent current or future performance of the property. You and your tax and legal advisors should conduct your own investigation of the property and transaction.



830 N Service Rd, Blytheville, AR 72315

We obtained the information above from sources we believe to be reliable. However, we have not verified its accuracy and make no guarantee, warranty or representation about it. It is submitted subject to the possibility of errors, omissions, change of price, rental or other conditions, prior sale, lease or financing, or withdrawal without notice. We include projections, opinions, assumptions or estimates for example only, and they may not represent current or future performance of the property. You and your tax and legal advisors should conduct your own investigation of the property and transaction.