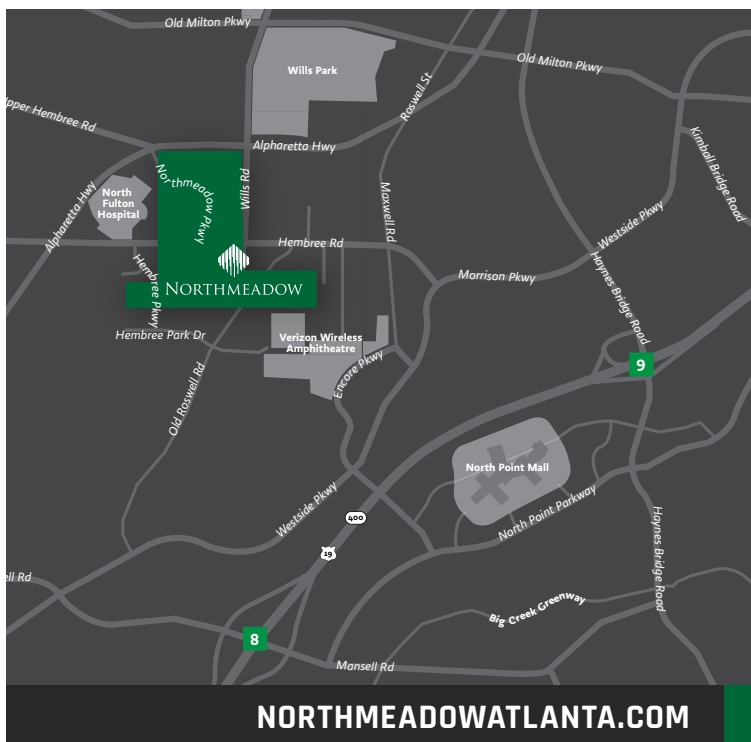




## 11810 WILLS RD

Suite 100 | Alpharetta, Georgia 30009



### BUILDING FEATURES

- » 59,334 SF Flex Building
- » 20% - 30% Office Finish
- » 2.50/1,000 Parking
- » Monument Signage on Wills Road
- » Near MARTA Bus Line
- » Upscale Roswell Location
- » Fiber Optics Available

### NORTHMEADOW FEATURES

- » Heavily Landscaped Park Setting
- » Ideal Corporate HQ / Medical Office
- » 19 Building Portfolio Totaling 1.2M SF on 125 Acres
- » On-site Property Management and Leasing
- » Close Proximity to GA 400 (1.5 Mile)

**MIKE BERENS**

404 812 4024

mberens@naibg.com

**LOGAN HANER**

404 812 4096

lhaner@naibg.com

Information is deemed from reliable sources. No warranty is made as to its accuracy.



## 11810 WILLS ROAD

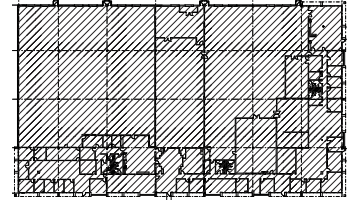
**SUITE 100 | 20,000 - 59,334 SF**

16,996 SF Office

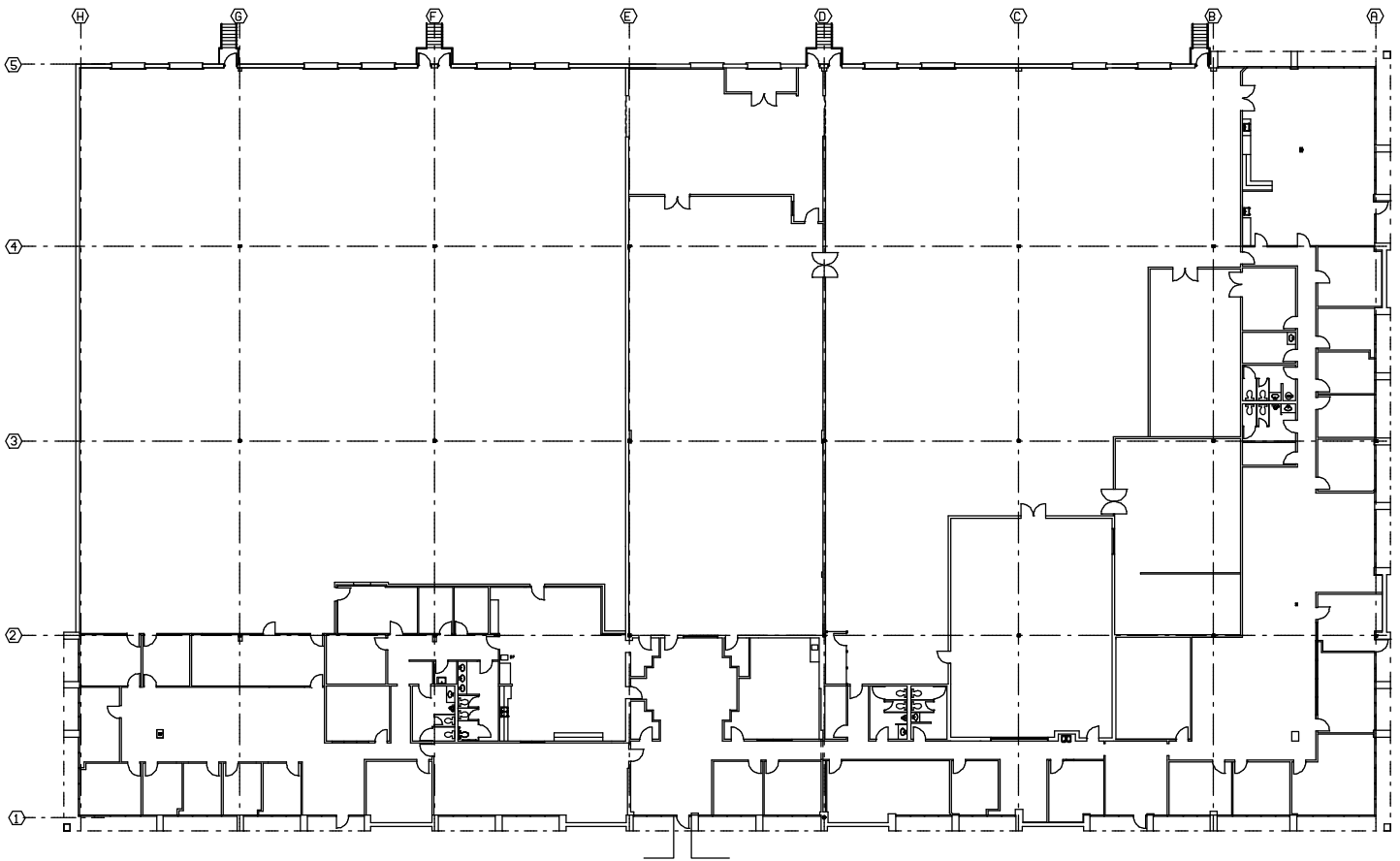
11,456 SF Lab

30,882 SF Warehouse

**59,334 SF Total**



### SUITE 100



**MIKE BERENS**

404 812 4024

mberens@naibg.com

**LOGAN HANER**

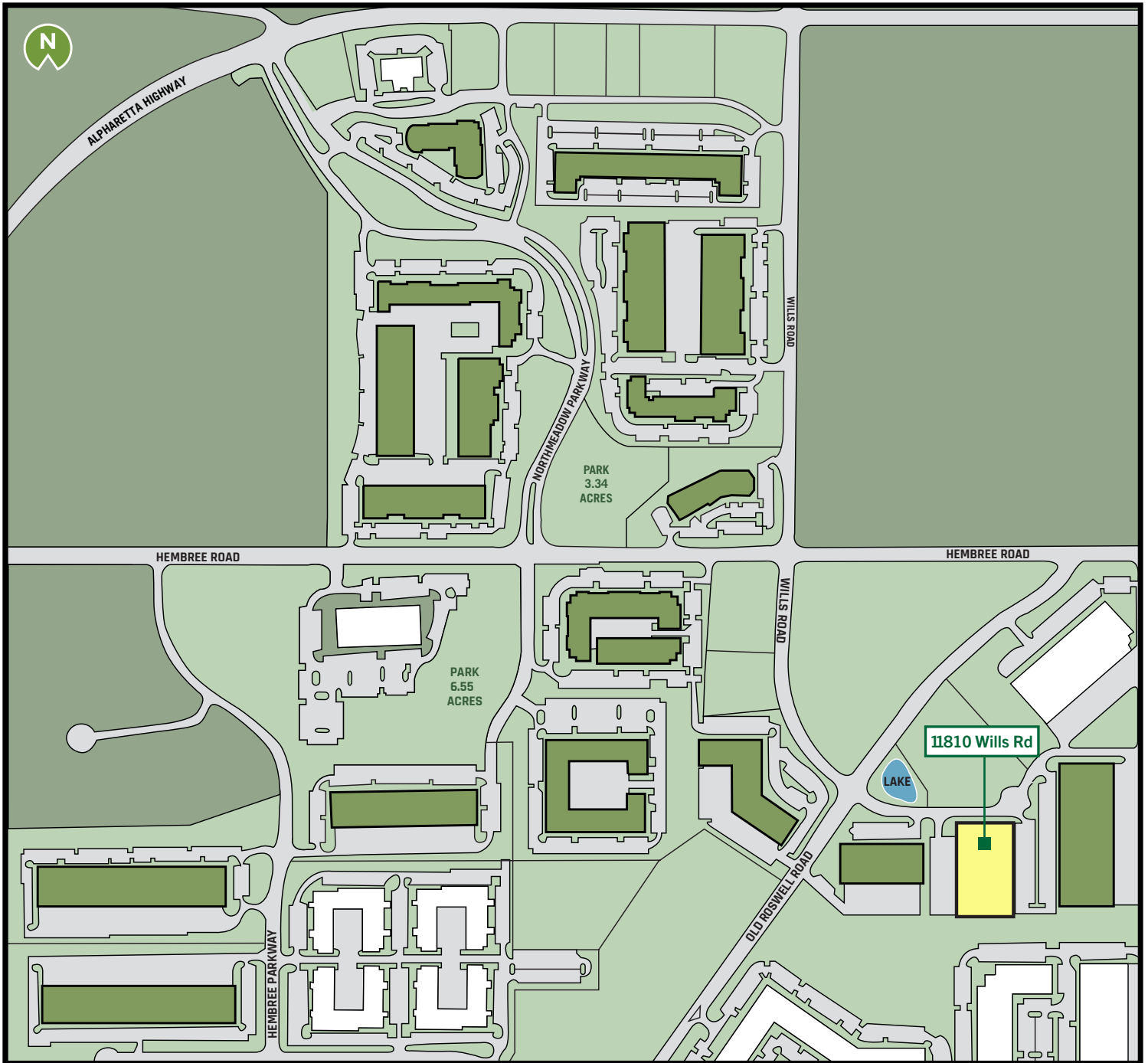
404 812 4096

lhaner@naibg.com

Information is deemed from reliable sources. No warranty is made as to its accuracy.



# NORTHMEADOW



**MIKE BERENS**

404 812 4024

mberens@naibg.com

**LOGAN HANER**

404 812 4096

lhaner@naibg.com

Information is deemed from reliable sources. No warranty is made as to its accuracy.