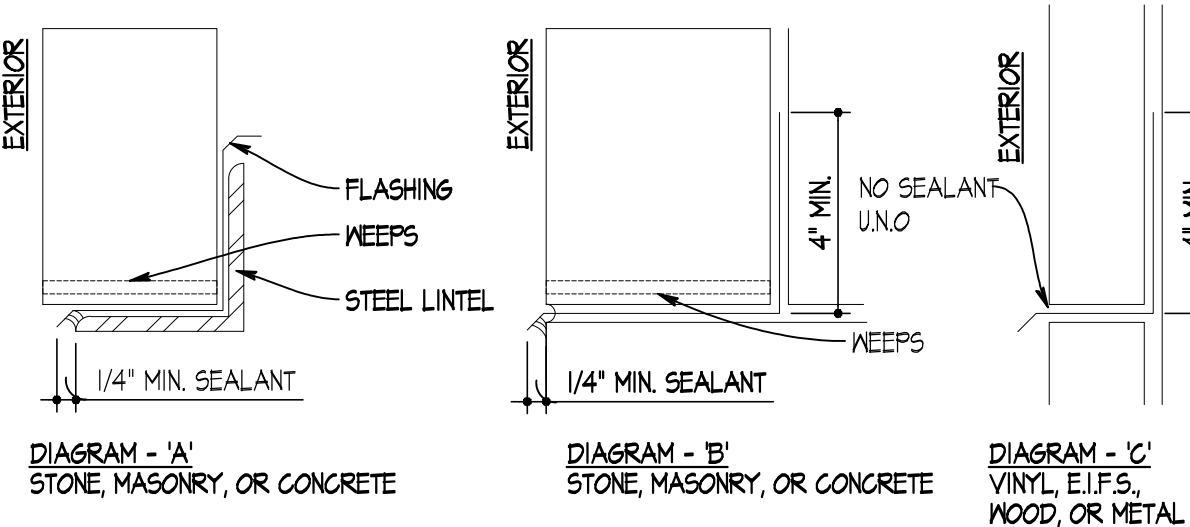


BUILDING INSULATION SCHEDULE (DIVISION 7)			
MARK	DESCRIPTION	THICKNESS (TOTAL R-VALUE)	LOCATION
I-1	RIGID FOUNDATION INSULATION BOARD (EXTRUDED POLYSTYRENE)	2" (R-11)	PERIMETER FOUNDATION
I-2	FLEXIBLE BATT GLASS FIBER INSULATION (UNFACED)	3-1/2" (R-21)	EXTERIOR WALL CAVITY
I-3	FLEXIBLE BATT GLASS FIBER INSULATION (FOIL FACED)	6" (R-19)	EXTERIOR WALL CAVITY
I-4	FLEXIBLE ROOF BATT GLASS FIBER INSULATION (FOIL FACED)	8" (R-25)	ABOVE CEILING AT ROOF TRUSS
I-5	SOUND ATTENUATION FLEXIBLE BATT GLASS FIBER INSULATION	3-1/2" U.N.O.	INTERIOR WALL CAVITY & ABOVE CEILINGS. SEE PARTITION TYPES
I-6	RIGID ROOF INSULATION BOARD (POLYISOCYANURATE)	VARIES	ABOVE ROOF DECK AT ENTRY TAPER TO DRAIN.
BUILDING INSULATION GENERAL NOTES			
1. INSULATION LOCATIONS SHOWN IN SCHEDULE ARE INTENDED ONLY FOR CLARIFICATION PURPOSES & ARE NOT INTENDED TO BE ALL-ENCOMPASSING. PROVIDE EACH INSULATION TYPE AS REQUIRED TO FULLY MAINTAIN THE THERMAL INTEGRITY OF THE CONSTRUCTION ASSEMBLIES RELATED TO THE ENTIRE BUILDING ENVELOPE.			

GENERAL FLASHING REQUIREMENTS

- PROPERLY KEEP ALL FLASHING POINTS & NORMAL DRAINAGE POINTS WITH KEEPS @ 1'-4" O.C. MAX. SPACING. KEEP POINTS ARE TO BE LOCATED DIRECTLY ON TOP OF FLASHING.
- AT ALL OPENINGS, EXTEND HEAD FLASHING 8" MIN. BEYOND EACH SIDE OF OPENING. TURN FLASHING UP A MIN. OF ONE MASONRY COURSE IN HEAD JOINTS OR A MIN. OF 4" WHERE HEAD JOINTS DO NOT OCCUR, IN ORDER TO FORM A "WATER DAM".
- WHERE FLASHING IS LOCATED ON THE TOP OF STEEL ANGLES, EXTEND FLASHING 1/4" BEYOND THE TANGENT POINT OF THE ANGLE LEG TO ALLOW FOR DRIP & SEALANT APPLICATION. REFER TO DIAGRAM "A".
- WHERE FLASHING IS LOCATED IN MASONRY, EXTEND FLASHING A MIN. OF 1/4" BEYOND FACE OF THE MASONRY TO ALLOW FOR DRIP & SEALANT APPLICATION. REFER TO DIAGRAM "B".
- WHERE FLASHING IS LOCATED TO TERMINATE AND/OR SEPARATE MATERIALS, DO NOT SEAL (U.N.O.) - REFER TO DIAGRAM "C". WHERE IT IS DETERMINED BY THE MATERIAL MANUFACTURER OR OTHERWISE THAT SEALING IS REQUIRED TO PREVENT WATER PENETRATION BEYOND FLASHING DUE TO WIND DRIVEN RAIN, THEN SEALANT MUST BE KEEPED IN ACCORDANCE WITH NOTE #1 ABOVE.
- UNLESS NOTED OTHERWISE, TURN FLASHING UP A MIN. OF 4" BEHIND APPROPRIATE MATERIALS.
- ALL FLASHING CONDITIONS, WHETHER DETAILED OR NOT, ARE TO BE IN ACCORDANCE WITH S.M.A.C.N.A. SPECIFICATIONS. WHERE ATYPICAL CONDITIONS OCCUR THAT ARE NOT DETAILED, FLASHING IS TO BE INSTALLED AS CLOSELY AS POSSIBLE TO THE S.M.A.C.N.A. DETAIL THAT MOST CLOSELY APPROXIMATES THE ACTUAL CONDITION.
- SEE SHEET F-1 FOR JOINT TREATMENT SCHEDULE FOR TYPES & LOCATIONS OF SEALERS, TYP.
- UNLESS NOTED OTHERWISE, AT FLASHING HIGH POINTS, TURN FLASHING HORIZONTALLY INTO ADJACENT MASONRY COURSE OR SEAL WATER TIGHT TO BACK-UP SUBSTRATE IF MASONRY DOES NOT EXIST.



NOTE: THE CONTRACTOR SHALL PROVIDE AND INSTALL SOLID WOOD BLOCKING FOR ALL WALL MOUNTED ITEMS, EQUIPMENT, MILLWORK, ETC. COORDINATE LOCATIONS WITH OWNER'S CONSTRUCTION REPRESENTATIVE AS NECESSARY.

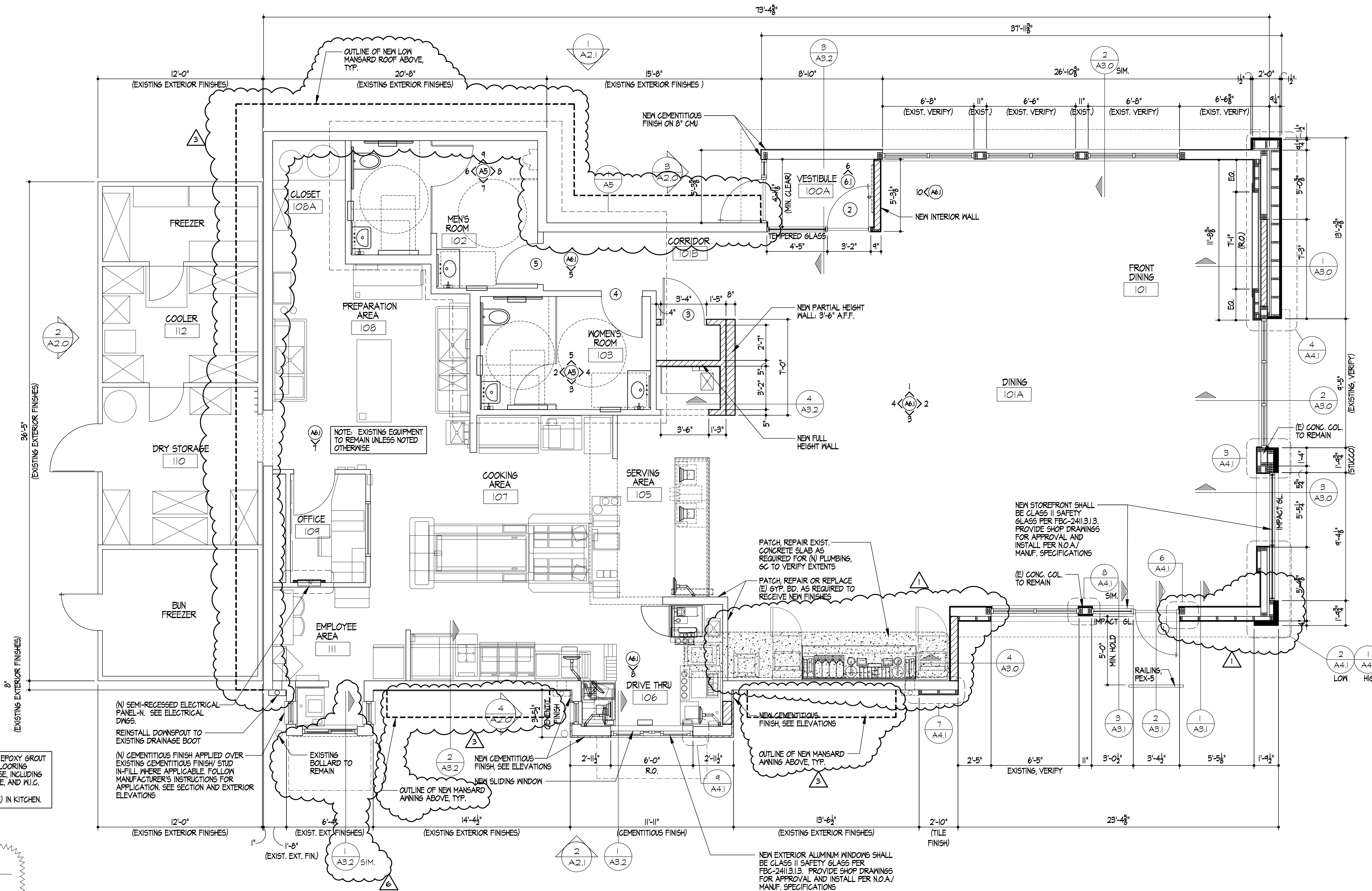
NOTE: SEE SHEETS A-6.1 & F-1 FOR INTERIOR FINISH PLAN AND SCHEDULES, SEE SHEET F-1 FOR DOOR SCHEDULE

NOTE: ALL DIMENSIONS SHOWN SHALL BE FIELD VERIFIED. THE ARCHITECT OF RECORD SHALL HAVE ALL EXISTING CONDITIONS VERIFIED INCLUDING BUT NOT LIMITED TO ALL DIMENSIONAL INFORMATION AND STRUCTURAL FRAMING SYSTEMS AND COORDINATE THE EXISTING WITH THE DESIGN INTENT AND SCOPE OF THE SITE SPECIFIC PROJECT PRIOR TO SUBMISSION FOR PERMIT REVIEW AND APPROVAL.

NOTE: COORDINATE CURB CUTS WITH CURTAIN WALL/STOREFRONT MANUFACTURER PRODUCT DETAILS AND SHOP DRAWINGS.

GENERAL NOTES

- ALL EXTERIOR DIMENSIONS ARE FROM FACE OF SHEATHING TO FACE OF SHEATHING U.N.O. ALL INTERIOR DIMENSIONS ARE TO FACE OF STUD U.N.O. DIMENSIONS TO EXISTING WALLS ARE TO FACE OF EXISTING SHEATHING, U.N.O.
- COORDINATE CURB CUTS AT DOORS WITH CURTAIN WALL/STOREFRONT MANUFACTURER PRODUCT DETAILS AND SHOP DRAWINGS.
- ALL NEW EXTERIOR WALLS SHALL BE INSULATED WITH 6" UNFACED FIBERGLASS INSULATION AND HAVE 6 MIL POLY VAPOR RETARDER.
- G.C. SHALL BE RESPONSIBLE FOR VERIFYING "AS-BUILT" CONDITIONS AND LAYING OUT WORK BEFORE PROCEEDING WITH WORK.
- EXTERIOR FINISHES ARE NOTED ON EXTERIOR ELEVATIONS.
- SEE FINISH PLAN AND INTERIOR ELEVATIONS FOR EXTENT OF NEW EXTERIOR FINISHES.
- INSTALL NEW TYVEK COMMERCIAL WRAP WEATHER BARRIER OVER SHEATHING BEHIND METAL PANELS. PROVIDE LIQUID-APPLIED WEATHER BARRIER TO SHEATHING AT E.I.F.S. LOCATIONS, PROVIDE TILE MANUFACTURER APPROVED WEATHER BARRIER BEHIND NEW CERAMIC TILE.
- THE CONTRACTOR SHALL PROVIDE AND INSTALL WOOD BLOCKING FOR ALL WALL MOUNTED ITEMS, EQUIPMENT, MILLWORK, ETC. COORDINATE LOCATIONS WITH OWNER'S CONSTRUCTION REPRESENTATIVE AS NECESSARY.
- SEE SHEET A-5 FOR RESTROOM SCOPE OF WORK.
- SEE SITE PLAN FOR SIDEWALKS, RAMPS, ETC.
- DO NOT SCALE DRAWINGS.
- MINIMUM INTERIOR FINISH CLASSIFICATION: OCCUPANCY A-2 NON-SPRINKLERED EXIT ENCLOSURES AND EXIT PASSAGEWAYS: A ROOMS AND ENCLOSED SPACES: B
- MATCH EXISTING FINISHES, U.N.O. TYP.
- VERIFY EQUIP, MFG, ELEC, & PLUMBING REQUIREMENTS W/ KITCHEN EQUIPMENT SUPPLIER
- SEE SHEETS A-6.0 AND F-1 FOR INTERIOR FINISH PLAN AND SCHEDULES. SEE SHEET F-1 FOR DOOR AND WINDOW SCHEDULES.
- GENERAL CONTRACTOR TO FIELD VERIFY ALL DIMENSIONS PRIOR TO CONSTRUCTION.



FLOOR PLAN
SCALE: 1/4" = 1'-0"

ATTENTION ALL BIDDERS

REFER TO WENDY'S APPROVED SUPPLIER LIST ON SHEET S-5 TO OBTAIN NATIONAL ACCOUNT PHONE NUMBERS AND CONTACTS

Hartley + Purdy Architecture, Inc.

FLOOR PLAN

Wendy's

MICHAEL MUROFF
AR 92344

No. 1401.04
TITLE: 2014 UM PROTOTYPE
11383 PALMETTO PARK RD.
BOCA RATON, FLORIDA
STORE #2607

DATE
ISSUE 04.10.14
REV 05.27.14
REV 08.08.14
REV 02.23.15

A1.0
AA-0003276

HARTLEY + PURDY ARCHITECTURE, INC.
ALL RIGHTS RESERVED 2014