

40450 MICHIGAN AVENUE
CANTON, MICHIGAN

RETAIL FOR LEASE
3,498 Square Feet Available



**SIGNATURE
ASSOCIATES**
KNOW SIGNATURE | KNOW RESULTS

FORMER WENDY'S RESTAURANT



PROPERTY FEATURES

- 3,498 square feet available
- 60 parking spaces
- Former Wendy's drive thru restaurant
- Located at I-275 freeway exit, near Ford Assembly with 6,000 workers
- Excellent visibility and demographics
- Lease Rate: \$22.00/sq. ft. NNN



For more information, please contact:

BRUCE BAJA
(248) 799 3177
bbaja@signatureassociates.com

JUSTIN GAFFREY
(248) 799 3143
jgaffrey@signatureassociates.com

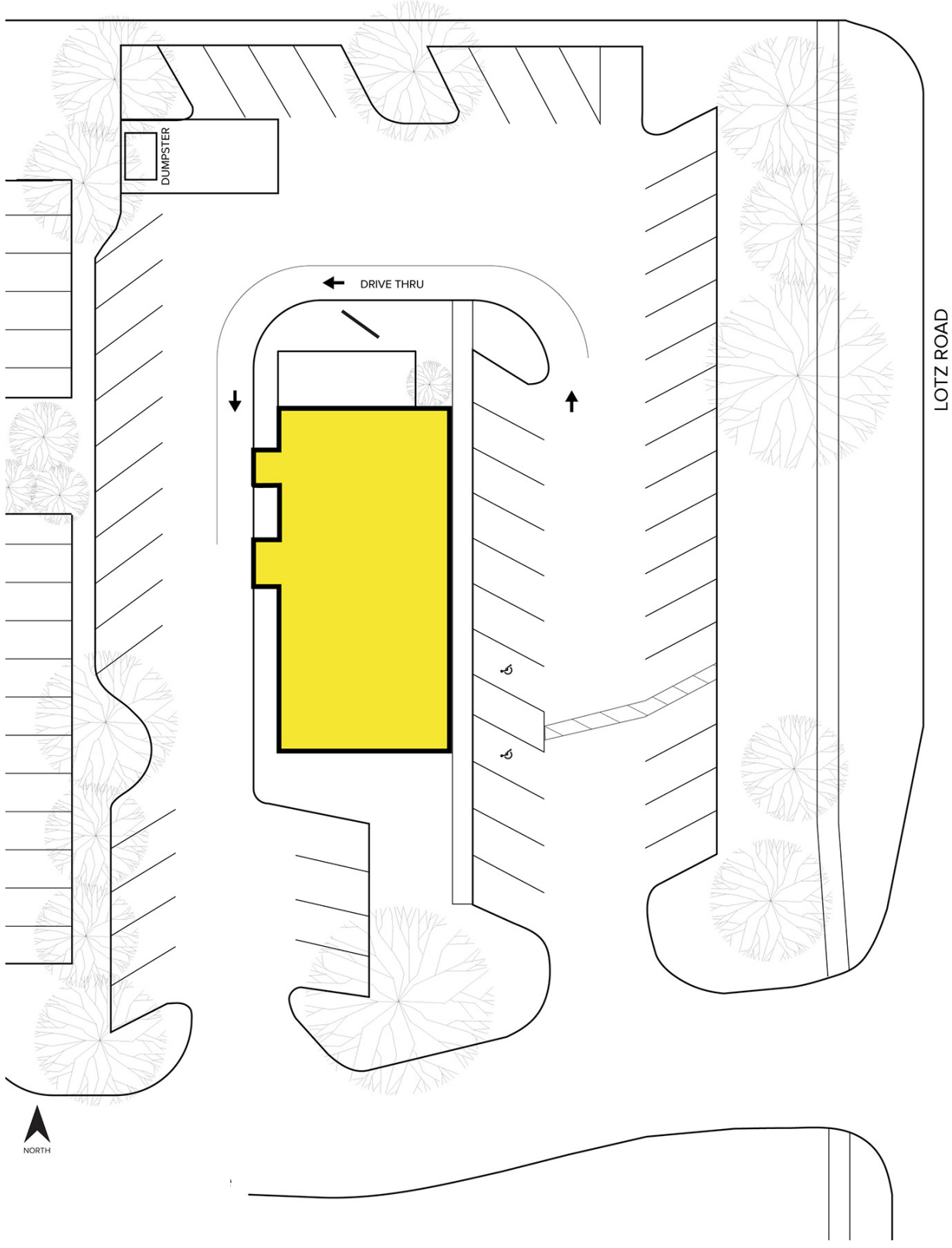
SIGNATURE ASSOCIATES
One Towne Square, Suite 1200
Southfield, MI 48076
www.signatureassociates.com

40450 Michigan Avenue – Canton, Michigan

Retail For Lease

3,498
Square Feet
AVAILABLE

Site Plan



For more information, please contact:

BRUCE BAJA
(248) 799 3177
bbaja@signatureassociates.com

JUSTIN GAFFREY
(248) 799 3143
jgaffrey@signatureassociates.com

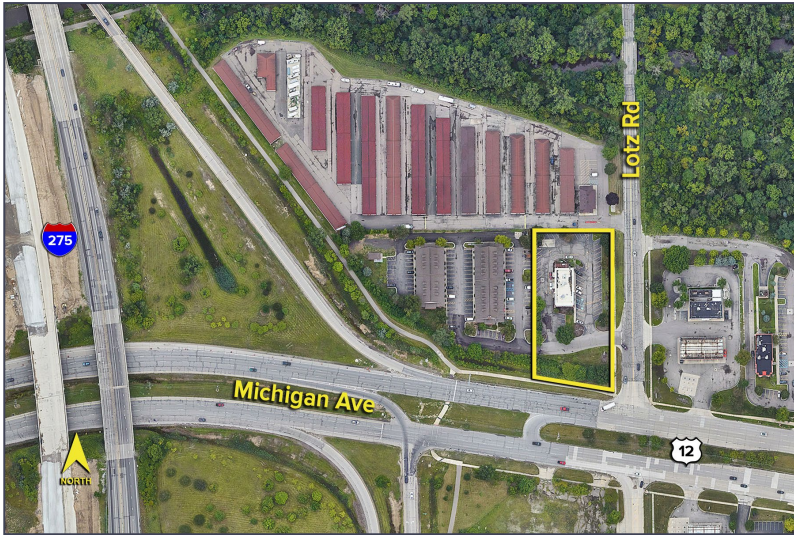
SIGNATURE ASSOCIATES
One Towne Square, Suite 1200
Southfield, MI 48076
www.signatureassociates.com

Information is subject to verification and no liability for errors or omissions is assumed. Price is subject to change and listing withdrawal.

40450 Michigan Avenue – Canton, Michigan

Retail For Lease

3,498
Square Feet
AVAILABLE

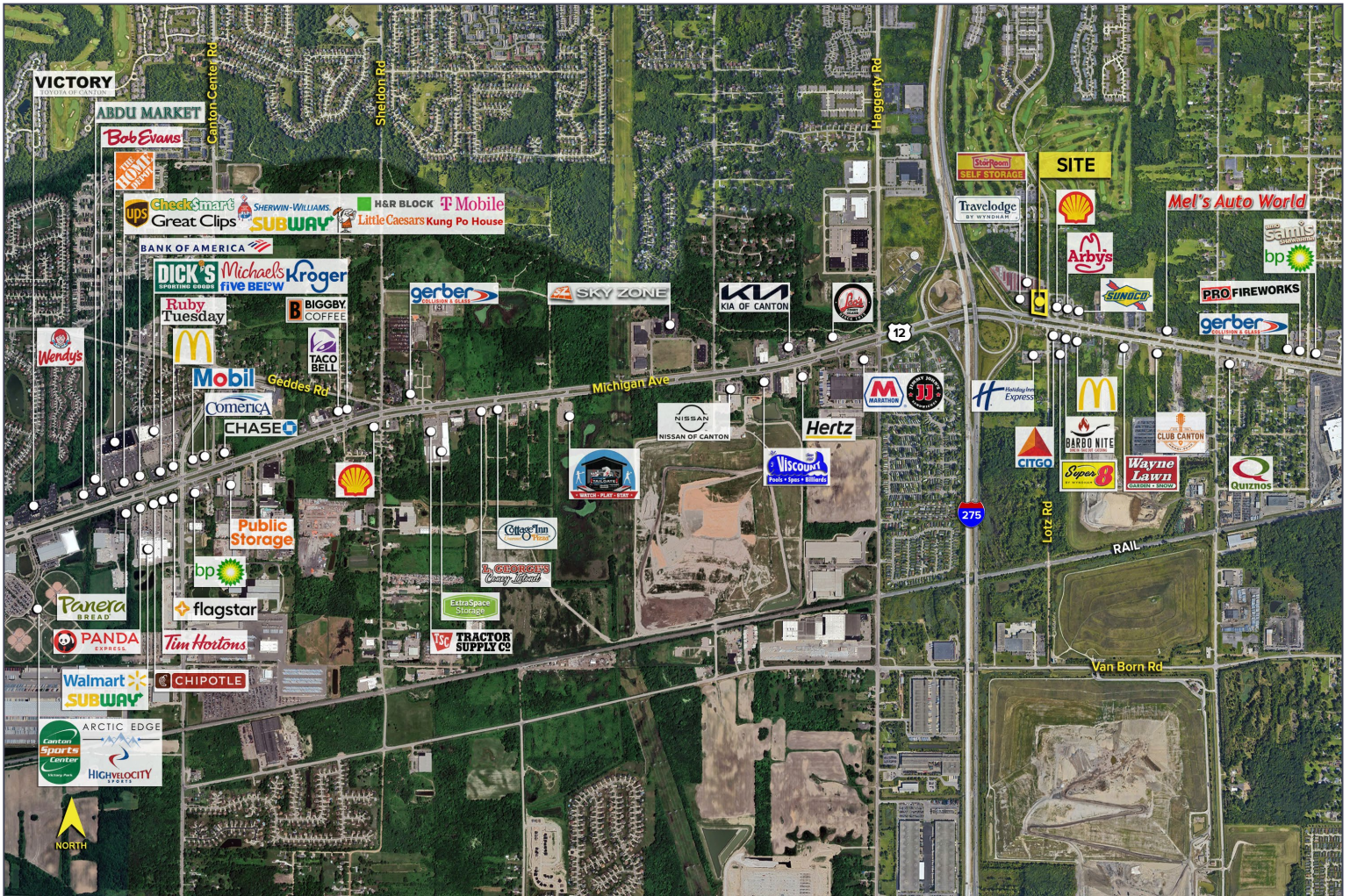


DEMOGRAPHICS

	POPULATION	MED. HH INCOME
1 MILE	5,138	\$80,591
3 MILE	61,372	\$88,891
5 MILE	183,286	\$83,422

TRAFFIC COUNTS (TWO-WAY)

52,864	Michigan Ave. E. of I-275
54,025	Michigan Ave. W. of I-275
63,344	I-275. N. of Michigan Ave
65,848	I-275. S. of Michigan Ave



For more information, please contact:

BRUCE BAJA
(248) 799 3177
bbaja@signatureassociates.com

JUSTIN GAFFREY
(248) 799 3143
jgaffrey@signatureassociates.com

SIGNATURE ASSOCIATES
One Towne Square, Suite 1200
Southfield, MI 48076
www.signatureassociates.com