

Office Opportunity

Contact

Mac Autrey

Principal Broker
+1 813 530 9464
mautrey@outliergroup.us

Laurie Lane

Junior Advisor
+1 614 619 9761
llane@outliergroup.us

The Outlier Group

Saint Petersburg, Florida
+1 888 966 4820
outliergroup.us

6416 Central Ave. St. Petersburg, FL

Prime Office Space for Lease – High Visibility on Central Avenue

Discover an exceptional office space in a high-traffic location with maximum visibility, featuring signage on both the pylon and building. This well-appointed space includes:

- Two private offices
- Spacious reception area
- One bathroom
- Potential for a conference room
- Ample storage closets
- Rear access entry

Enjoy ample parking, high-speed internet, and convenient access to public transportation. Just five minutes from downtown St. Petersburg, this location is ideal for attorneys, real estate firms, staffing agencies, cosmetology businesses, and more.

Surround yourself with established businesses like Melby & Associates (CPA) and Bozeman Insurance Group.

Secure your space today. Contact us for leasing details and a private tour.

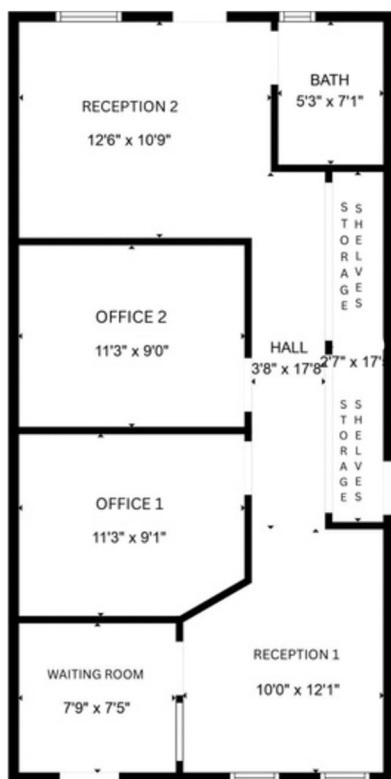
For Lease

Prime Central Ave Office – High Traffic, Turnkey Layout, Minutes from Downtown

Property Address:	6416 Central Ave.	
Location:	St. Petersburg, FL 33707	
Zoning:	CRT-1	
Property Type:	Office	
Building Size:	4,444 SF	
Unit Size (SF):	800 SF	
Year Built:	1976	
Pricing & Lease Terms:	Base Rent	\$25 PSF
	NNN or CAM Expense	\$5 PSF
	Est. Monthly Rent	\$2,000
Occupancy Status:	Available Now	



Site Plan



THE OUTLIER GROUP

The Outlier Group is a Commercial Real Estate firm that focuses on brokering assets in Florida. From leasing to investment, we provide local expert guidance at every stage of your commercial real estate journey, helping you achieve your goals with clarity, confidence, and precision.

The Outlier Group
Saint Petersburg, Florida
+1 888 966 4820
outliergroup.us