

# 316,200 SF

Industrial Space For Lease



## Prologis Aurora



901 Bilter Road  
Aurora, IL 60502 USA

### LOCATION

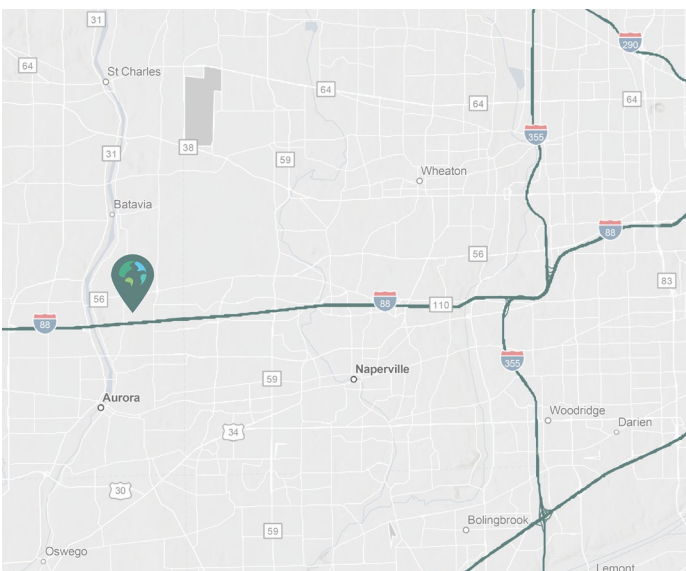
- 1 mile from full interchange at I-88 and Farnsworth
- Located in the heart of the I-88 Industrial Submarket

### FACILITY

- 607,752 SF industrial building
- 316,200 SF available
- 4,952 SF main office area
- 1,421 SF shipping office
- 32' clear height
- 40 exterior docks existing (expandable to 68)
- 2 drive-in doors
- 48' x 48' column spacing with 60' speed bays
- LED motion censored lighting in warehouse
- 1,200 amps @ 277/480 volts
- 190 car parking stalls
- 71 trailer parking stalls (expandable)
- Cross dock facility
- Land available for additional car and/or trailer parking

### ADVANTAGES AND AMENITIES

- Established business park setting
- Low Kane County taxes



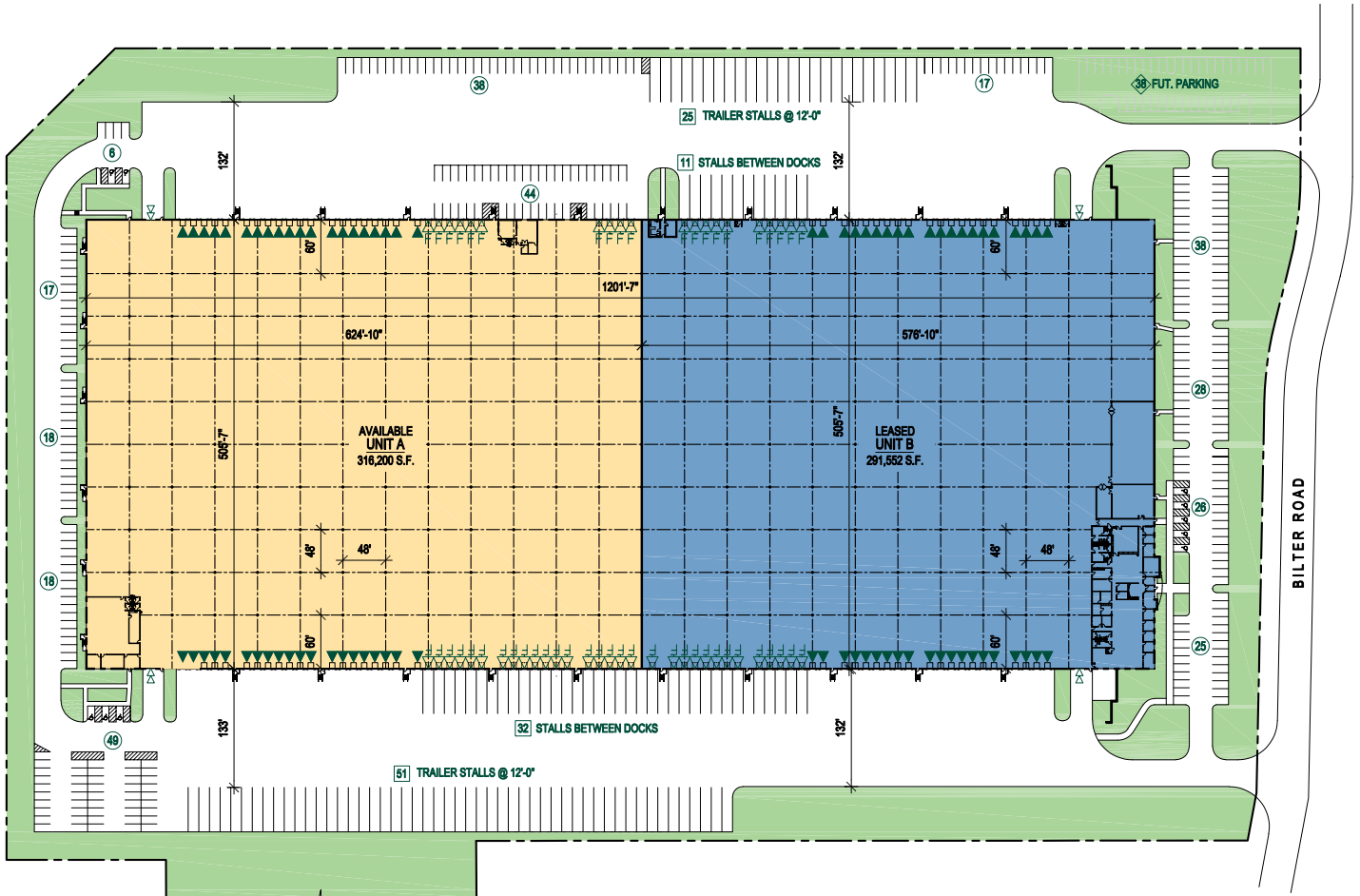
**Prologis Essentials: your single-source service for efficient move-in and operations at [prologisessentials.com](https://www.prologisessentials.com)**

# 316,200 SF

## Industrial Space For Lease



# Prologis Aurora



**NAI Hiffman**  
Steve Connolly  
sconnolly@hiffman.com  
ph +1 630 693 0642  
cell +1 312 593 0959  
1 Oakbrook Terrace  
Suite 400  
Oakbrook Terrace, IL 60181 USA

**NAI Hiffman**  
Mark Moran  
mmoran@hiffman.com  
ph +1 630 693 0656  
cell +1 773 520 2132  
1 Oakbrook Terrace  
Suite 400  
Oakbrook Terrace, IL 60181 USA

**KBC Advisors**  
Jeff Fischer  
jeff.fischer@kbcadvisors.com  
ph +1 773 453 7020  
cell +1 630 992 3108  
330 W Chestnut Street  
2nd Floor  
Hinsdale, IL 60521 USA

**Prologis**  
Matthew Mannina  
mmannina@prologis.com  
ph +847 292 3939  
cell +1 847 791 3827  
6250 North River Road  
Suite 1100  
Rosemont, IL 60018 USA

**Prologis Essentials: your single-source service for efficient move-in and operations at [prologisessentials.com](http://prologisessentials.com)**

No warranty or representation, expressed or implied, is made as to the accuracy of the information contained herein, and same is submitted subject to error and omissions.

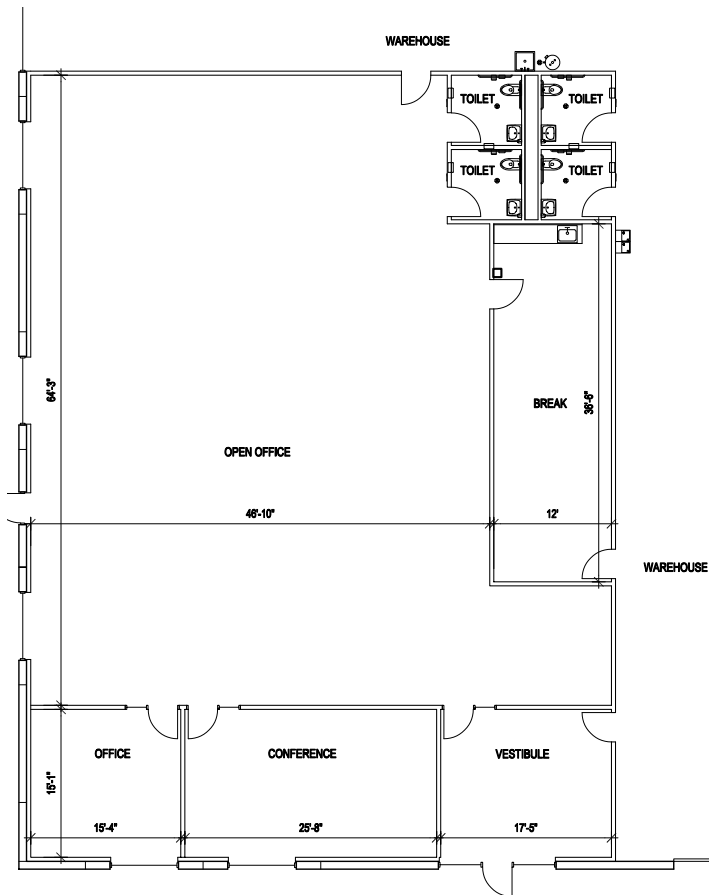
# 316,200 SF

Industrial Space For Lease

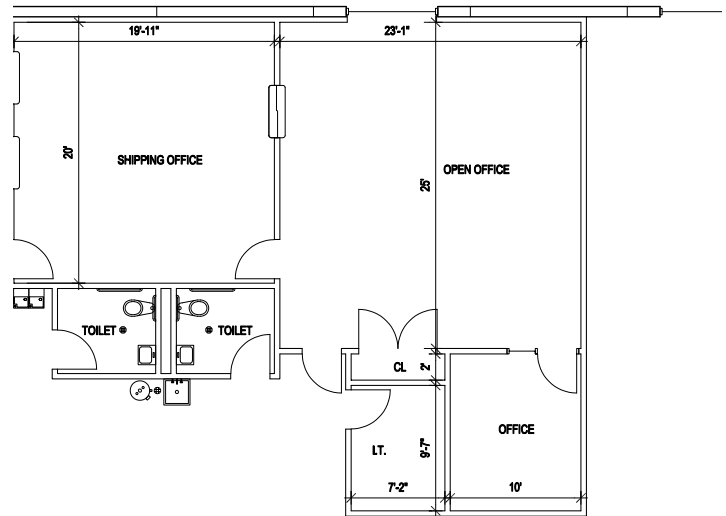


## Prologis Aurora

### Office Plan



### Warehouse Office Plan



**NAI Hiffman**  
Steve Connolly  
sconnolly@hiffman.com  
ph +1 630 693 0642  
cell +1 312 593 0959  
1 Oakbrook Terrace  
Suite 400  
Oakbrook Terrace, IL 60181 USA

**NAI Hiffman**  
Mark Moran  
mmoran@hiffman.com  
ph +1 630 693 0656  
cell +1 773 520 2132  
1 Oakbrook Terrace  
Suite 400  
Oakbrook Terrace, IL 60181 USA

**KBC Advisors**  
Jeff Fischer  
jeff.fischer@kbcadvisors.com  
ph +1 773 453 7020  
cell +1 630 992 3108  
330 W Chestnut Street  
2nd Floor  
Hinsdale, IL 60521 USA

**Prologis**  
Matthew Mannina  
mmannina@prologis.com  
ph +847 292 3939  
cell +1 847 791 3827  
6250 North River Road  
Suite 1100  
Rosemont, IL 60018 USA

**Prologis Essentials: your single-source service for efficient move-in and operations at [prologisessentials.com](https://www.prologisessentials.com)**

No warranty or representation, expressed or implied, is made as to the accuracy of the information contained herein, and same is submitted subject to error and omissions.

# 316,200 SF

Industrial Space For Lease



## Prologis Aurora



**NAI Hiffman**  
Steve Connolly  
sconnolly@hiffman.com  
ph +1 630 693 0642  
cell +1 312 593 0959  
1 Oakbrook Terrace  
Suite 400  
Oakbrook Terrace, IL 60181 USA

**NAI Hiffman**  
Mark Moran  
mmoran@hiffman.com  
ph +1 630 693 0656  
cell +1 773 520 2132  
1 Oakbrook Terrace  
Suite 400  
Oakbrook Terrace, IL 60181 USA

**KBC Advisors**  
Jeff Fischer  
jeff.fischer@kbcadvisors.com  
ph +1 773 453 7020  
cell +1 630 992 3108  
330 W Chestnut Street  
2nd Floor  
Hinsdale, IL 60521 USA

**Prologis**  
Matthew Mannina  
mmannina@prologis.com  
ph +847 292 3939  
cell +1 847 791 3827  
6250 North River Road  
Suite 1100  
Rosemont, IL 60018 USA

**Prologis Essentials: your single-source service for efficient move-in and operations at [prologisessentials.com](http://prologisessentials.com)**

No warranty or representation, expressed or implied, is made as to the accuracy of the information contained herein, and same is submitted subject to error and omissions.